



The Avion



VOL 12 No. 1

EMBRY-RIDDLE AERONAUTICAL UNIVERSITY, Friday, September 8, 1972

Funded By SGA

GILL ROBB WILSON OPERATIONAL



The Gill Robb Wilson Memorial Aeronautical Center officially began operations in August 1972. The three new octagonal buildings offer students an efficient flight operations center, a weather briefing room, four classrooms and individual study-tutoring rooms.

The heart of the flight operations center is the Big Board located in the Tine W. Davis building. The Big Board, manned by student dispatch personnel, facilitates total coordination between flight instructors and students.

In the same building is located a weather-briefing room equipped at present with a barometric pressure indicator and a teletype weather

readout machine. The weather room will also be equipped with wind speed and direction indicators.

The four classrooms are located in buildings M and N. Desks with built-in individual response buttons are the unique feature of the classrooms. The master control unit gives the instructor various capabilities from monitoring individual students to administering exams.

Tutoring rooms are also located in buildings M and N. These rooms allow uninterrupted studying and individual instruction. Each room will soon have slide projection equipment which will aid the student in review of classroom material.

ADDITIONS TO ERAU

The Division of Flight Technology at Embry-Riddle Aeronautical University has added three new flight instructors for the fall term. Mr. Warren Ross has been added as a Special Faculty Flight Instructor. His extensive aviation background began in WWII when he taught fighter tactics and gunnery as a Navy instructor for the Marine Corps. He was an instructor for E-RAU in 1965-66 until he left to fly for Air Asia. Mr. Ross recently returned from Saudi-Arabia where he worked as a charter pilot and airline flight instructor. Mr. David R. Smith, a former E-RAU flight student, in employed as a Flight Instructor II. Originally from Reading, Pa., Mr. Smith graduated from Penn State University as an Aeronautical Engineer. Mr. Benjamin C. Ritter, Jr., also an E-RAU flight graduate, will add his

talents to the faculty in the fall term as a Special Faculty Flight Instructor. Mr. Ritter is a member of the AOPA and is a member of the Deland Pilots Association.

The Division of Flight Technology has acquired eight new Cessna aircraft to bring E-RAU's total training fleet to 43. The flight line has been moved to the new Gill Robb Wilson Memorial Complex where the classroom and simulator training will be held.

The Division of Maintenance Technology will add Mr. Frank J. Impagliazzo, Jr. to the instructor staff. Mr. Impagliazzo, a former Air Force aircraft propeller specialist, is an E-RAU Airframe and Powerplant graduate and has an Associate Degree in Maintenance Management. The Ocean City, N.J. native is continuing work to-

ward a B.S. in Maintenance Management. More than 100 new Airframe and Powerplant students will begin the fall term at E-RAU. The A&P enrollment for the fall term represents a 30 per cent increase over last year.

The Administration has added Mr. Harry Wilkes as Assistant for Special Activities. Mr. Wilkes, a member of the Sigma Chi Social Fraternity, has a B.S. Degree in Aeronautical Science and is currently a Naval Reserve helicopter pilot.

PRO PILOT REGISTRATION

The next Professional Pilot Program at Embry-Riddle Aeronautical University begins registration September 12 with ground school starting September 14. For further information contact the Admissions Office.

FAC WORKSHOP

Curriculum changes, academic counseling, and standards for College Level Examination Program testing were agenda items at a faculty workshop day held Monday, August 28, at the oceanfront home of E-RAU President, Jack Hunt.

Topic chairmen for the morning sessions were Professor Garrett, counseling; Dr. Eberle, curriculum; Professor Deissler, CLEP standards. Members of the academic faculty joined the group of their choice, pointing out existent problems and suggesting possible solutions in each area.

During the afternoon session, the three topic leaders presented a summary of the findings of each group to the entire academic faculty who discussed, questioned, and, in some cases, approved the initial suggestions and recommendations.

NEW TRAFFIC HEAD

Bob Weikel was recently named head of the Traffic Division for E-RAU traffic. The graduation of Wayne Wedlake on August 15, 1972 left the position open.

Mr. Weikel's first order of business is getting cars registered on campus. In a recent interview, Bob Weikel informed the Avion that, "All stickers from last year expired on 1 Sept. 1972" and that, "Everyone should check the expiration date on their sticker, and if they need a new sticker, they should come by the Security Office and pick up one." Traffic stickers are good for a period of one year and must be renewed on September 1 of every year.

Bob Weikel also serves as a senator in the SGA. He has held the position of senator since the summer tri and is head of the traffic committee of the SGA.

RIDE TO RIDDLE

In an effort to aid the incoming students through the confusion and cost of arrival at Daytona Beach Airport, the brothers of Lambda Chi Alpha offered a welcome hand and a "Ride to Riddle". Several of the brothers on August 21st and 22nd spent the day at the Daytona Beach Airport shuttling arriving students to the dormitory and giving them information and assistance.

Tip Fuller, originator of the "Ride to Riddle" idea, said, "It was a much needed program for the student who arrives often alone and bewildered. A helping hand is in the spirit of fraternity and demonstrated the present student's willingness to help new students." He further added that he was developing follow-up programs for next trimester and hoped other organizations would pursue programs to aid students at E-RAU.

The incoming student is often a forgotten person by the established students. He is often misled, frustrated, hassled, confused, angry and embittered. Perhaps many of these emotions might be eliminated if organizations and individuals took an active part in trying to help new students through the maze of matriculation.



SPEAKING OUT

The AVION reserves the right to edit letters as we see fit in accordance with good journalistic practice. All letters must be signed, although names will be withheld upon request from the writer.



THE OPINIONS EXPRESSED IN THIS PAPER ARE NOT NECESSARILY THOSE OF THE UNIVERSITY OF ALL MEMBERS OF THE STUDENT BODY, NOR DO LETTERS APPEARING IN THE AVION NECESSARILY REFLECT THE OPINION OF THIS NEWS-PAPER OR ITS STAFF.

The SGA President's Corner

welcome all new students and returning students. We at the SGA hope our new students will find their time spent here beneficial and rewarding. If you took off during the break, we hope you had a wonderful time and are ready now to settle down to some serious studying. Any student needing financial assistance, please contact the Placement Office. Numerous jobs are available and they will be glad to give you all the help you need.

The first important upcoming event is the elections scheduled for September 27. If you are not going to run for office, at least go out and meet the prospective candidates and hear their platform. Do not just simply vote for a name, but know who you are voting for. All those interested in running for office, pick up a petition form in the SGA Office.

Revisions of the Academic Policy and Curric-

ulum will be printed in a revised bulletin to be issued sometime during October, or come out in a supplement to the 1972-73 bulletin at the end of August.

The traffic stickers and regulations are in the Traffic Office. Stop by and pick them up and read these regulations carefully in order to avoid unnecessary problems later on.

My thanks and appreciation to Linn Henry and Charlie Matlock for their help in getting me started in my office of acting President of the SGA. Best of luck to both of you in your future endeavors!

To all of you students, old and new, I would like to extend my invitation to become actively involved and interested in your SGA. We would like you to come to the SGA with any problems you might have. Our Senate meetings are open to you—come and see how your SGA works.

Until next week,
Stan Steenbock
Acting SGA President

PARKING PROBLEM REMAINS UNSOLVED

Students returning to campus this Fall tri may find it hard to find a parking space near the Academic Complex and Gill Robb Wilson building because of the limited number of parking spaces.

Assistant Chief of Security, John Foster, projected that about 720 spaces will be needed for parking in the Academic Complex and Gill Robb Wilson area, and at present only 545 spaces are available.

"Our most urgent problem at present is finding enough parking spaces for the students", stated Foster. The Security Office has been working on the parking situation through the summer tri, preparing for the influx of students and their vehicles.

Proposals for additional parking spaces have been drawn up and presented to Mr. Manson, E-RAU Executive Vice-President.

"Mr. Manson is well aware of the situation, and he has informed me that the school will soon be building a new ramp for the aircraft which are presently parked in the front of the Gill Robb Wilson building. When this new ramp is completed, all the area now occupied by aircraft will be turned back into a parking area as it once was", Foster stated.

The area presently occupied by the aircraft was student parking up until the beginning of the Summer tri when the Gill Robb Wilson building opened for business and the parking area was turned into a ramp.

"After working with Mr. Manson and talking with Mr. Hunt on the matter, I feel confident that they are sincere in their talk of building a new ramp and returning the present ramp back to

THE RETURN OF THE POWER OF THE VOTE

Last year, the system made a mistake. It gave eighteen-year-olds the right to vote. But the system doesn't like to make the same mistake twice. So they're making voter registration a little difficult, a little confusing, a little more ludicrous.

How? In some states, you have to register where your parents live, not where you live. In others, you can register in your precinct only two days out of the year. Voter registration in many areas is controlled by the old American tradition -- machine politics.

The system knows the power of the eighteen-year-old vote. There are potentially twenty-

five million new young voters in the United States. In 1968, Richard Nixon and Hubert Humphrey each received thirty-one million votes for the presidency. There is practically one new voter for every vote Richard Nixon received in 1968. Add to that the forty-seven million Americans who were not inspired to vote in that election, and we would have had a whole new ball game.

You can elect the next President of the United States--you can create a responsive base of power in your community--you can establish an alternative that would be a major force in this country--only if you register to vote.

student parking as soon as possible. Naturally, any project of this size and expense will take time, and the estimate they have given us at present will be about 6 or 7 weeks. All we can do now is sit back and wait and let time tell", Foster said.

The Traffic Division of the Security Office would like to do away with the restricted parking of red and blue stickers, and it is hoped that when the additional parking areas are obtained that the restriction can be lifted.

"Until the restric-

tions can be lifted, we ask for the cooperation of everyone involved, and anyone who has questions concerning the situation is welcome to contact me or Bob Weikel, head of Traffic Division, to find out the answers", Foster said.

Students with red stickers on their cars are not allowed to park in the Academic Complex and Gill Robb Wilson parking lot, and students with blue stickers are not allowed to park in the front lot of Dorm. I. Parking maps of the campus are available in the Security Office.

LETTERS TO THE AVION

Dear AVION

"I spent over 10,000 dollars to send my kid to this school and this is the way I'm treated!"

That unusual comment was heard or thought by the overflow of the August Graduation. Yes, E-RAU has done it again. They took our money then we seemed to have been cheated at Graduation. But we the graduates cheated ourselves. After two meetings the grads decided we were 75 in number who wanted a quick ceremony on campus, and would get our own invitations.

Our Senior Class Officers ran with the slogan "get your money's worth". They gave us everything we wanted, but not everything they promised.

Seniors, you now have the possibility of knowing all about your graduation class right now. So get started now on finding a suitable place to hold the 200 or so expected this time and please get the time schedule straight.

A mad (but informed) grad

PS

Has anyone contacted DBCC about their auditorium. It is large enough, plush enough, and through the right people, cheap enough.

Executive Editor.....Nancy Coates

Associate Editor.....Curtis Poree

PRODUCTION

Drew Kassal
David McGlooin

PHOTOGRAPHY

Jerry Erickson, Editor
Bob Barresi
Bob Butterworth
John Jeseke

SPORTS

Bob Argila, Editor
James Hunter

FEATURES

Charlie McMahon, Editor
Ron Nyhan
John Miller
Jim Owen

NEWS

John Collins, Editor
Vaughn Lane
Ron Nyhan
John Foster
Joe Green

ARTIST

Bob Coleman

TYPIST

Nancy Lucas
Charlie McLemore

CIRCULATION

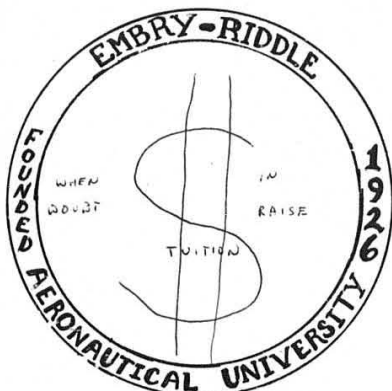
James Hunter

Advisor.....Mary McLemore

Published by the Halifax Reporter



WANTED A UNIVERSITY SEAL CURRICULUM



All students, staff and faculty members, or University groups are invited to submit a design that will symbolize Embry-Riddle. The conventional design shown may be used or any other appropriate design. The University name and date of founding (1926) must be used.

Designs will be judged by a committee comprised of representatives of the Board of Trustees, Faculty, Student Government Association and Administrative Staff. The University Seal Committee will meet November 1, 1972 for the purpose of making a selection. Therefore, all proposals must reach the University Special Activities Office by the close of business on Tuesday, October 31, 1972.

The person or group whose design is adopted by the University will be awarded \$50.

ERAU SPORTPARACHUTE CLUB

Your Sport Parachute Club welcomes all new and returning students and is looking forward to meeting you either as participants or spectators in this exciting sport.

We regret to inform you of the death of one of our most active and colorful members. John Culpepper was fatally injured while crop dusting in Georgia on July 31st. As a sport parachutist he had logged well over a thousand jumps and was a key member of our team during the past two National Collegiate Sport Parachuting Meets. His presence will be keenly missed by everyone who knew him.

There is no truth to the rumor that Hofstater has been Hoffed.

Curriculum Changes

There have been a number of curriculum changes at E-RAU this fall. In addition to the recently established Cooperative Education Programs, end-of-course exams will be available which, if passed, will allow a resident student to exempt a formal course for degree credit. Two new courses, Slide Rule and Journalism, have also been added. A number of courses have undergone revisions with some strengthened in credit hours. Full time students status will be reduced from 14 to 12 credit hours effective January, 1973.

Recruiters Visit Campus

The U.S. Navy will visit Embry-Riddle Aeronautical University Sept 11-15. Interested students may discuss career matters with the Officer Selection Team in the Student Center during school hours.

The U.S. Marine Corps will visit the E-RAU campus October 30-31. All interested students are invited to discuss military opportunities and recruiting details in the Student Center during school hours.

Educational Testing Service

Educational Testing Service announced that undergraduates and others preparing to go to graduate school may take the Graduate Record Examinations on any of six different test dates during the current academic year.

The first testing date for the GRE is October 28, 1972. Scores from this administration will be reported to the graduate schools around Dec. 4. Students planning to register for the October test date are advised that applications received by ETS after Oct. 3 will incur a \$3.50 late registration fee. After October 10, there is no guarantee that applications for the Oct. test date can be processed.

The other five test dates are Dec. 9, 1972, Jan. 20, Feb. 24, (only the Aptitude Test is administered), April 28, and June 16, 1973. Equivalent late fees and registration deadlines apply to these dates. Choice of test dates should be determined by the requirements of graduate schools or fellowship sponsors to which one is

applying. Scores are usually reported to graduate schools five weeks after a test date.

The Graduate Record Examinations include an Aptitude Test of general scholastic ability and Advanced Tests measuring achievement in 19 major fields of study. Full details and registration forms for the GRE are contained in the 1972-73 GRE Information Bulletin. The Bulletin also contains forms and instructions for requesting transcript service on GRE scores already on file with ETS. This booklet is available on most campuses or may be ordered from:

Educational Testing Service
Box 955
Princeton
New Jersey 08540

Educational Testing Service
1947 Center Street
Berkeley
California 94704

Educational Testing Service
960 Grove Street
Evanston
Illinois 60201

HAILING INSTRUCTIONS

Students expecting money please have it sent registered or certified. Then it is required to present your ID Card to pick up and sign for the letter.

Hot Foot's FOOTBALL PARLOR

DAYTONA BEACH
312 MAIN ST.
OPEN TIL 2 AM

FOR SALE-Gerard automatic turntable model SL55. Call Joe 252-2339

FOR SALE-Gerard automatic turntable model SL55. Call Joe 252-2339.

WE GOT 'EM!

GRAND PRIX-AND ROAD HUGGER

14"X40" SERIES RAISED WHITE LETTERS

POLYESTER & GLASS

*****60 SERIES BELTED*****

6-16-15 528.95" 6-16-14 527.95" 6-16-13 527.95"

6-16-12 527.95" 6-16-11 526.95" 6-16-10 526.95"

6-16-9 526.95" 6-16-8 525.95" 6-16-7 525.95"

6-16-6 525.95" 6-16-5 524.95" 6-16-4 524.95"

6-16-3 524.95" 6-16-2 523.95" 6-16-1 523.95"

6-16-0 523.95" 6-16-15 522.95" 6-16-14 522.95"

6-16-13 522.95" 6-16-12 521.95" 6-16-11 521.95"

6-16-10 521.95" 6-16-9 520.95" 6-16-8 520.95"

6-16-7 520.95" 6-16-6 519.95" 6-16-5 519.95"

6-16-4 519.95" 6-16-3 518.95" 6-16-2 518.95"

6-16-1 518.95" 6-16-0 517.95" 6-16-15 517.95"

6-16-14 517.95" 6-16-13 516.95" 6-16-12 516.95"

6-16-11 516.95" 6-16-10 515.95" 6-16-9 515.95"

6-16-8 515.95" 6-16-7 514.95" 6-16-6 514.95"

6-16-5 514.95" 6-16-4 513.95" 6-16-3 513.95"

6-16-2 513.95" 6-16-1 512.95" 6-16-0 512.95"

6-16-15 512.95" 6-16-14 511.95" 6-16-13 511.95"

6-16-12 511.95" 6-16-11 510.95" 6-16-10 510.95"

6-16-9 510.95" 6-16-8 509.95" 6-16-7 509.95"

6-16-6 509.95" 6-16-5 508.95" 6-16-4 508.95"

6-16-3 508.95" 6-16-2 507.95" 6-16-1 507.95"

6-16-0 507.95" 6-16-15 506.95" 6-16-14 506.95"

6-16-13 506.95" 6-16-12 505.95" 6-16-11 505.95"

6-16-10 505.95" 6-16-9 504.95" 6-16-8 504.95"

6-16-7 504.95" 6-16-6 503.95" 6-16-5 503.95"

6-16-4 503.95" 6-16-3 502.95" 6-16-2 502.95"

6-16-1 502.95" 6-16-0 501.95" 6-16-15 501.95"

6-16-14 501.95" 6-16-13 500.95" 6-16-12 500.95"

6-16-11 500.95" 6-16-10 499.95" 6-16-9 499.95"

6-16-8 499.95" 6-16-7 498.95" 6-16-6 498.95"

6-16-5 498.95" 6-16-4 497.95" 6-16-3 497.95"

6-16-2 497.95" 6-16-1 496.95" 6-16-0 496.95"

6-16-15 496.95" 6-16-14 495.95" 6-16-13 495.95"

6-16-12 495.95" 6-16-11 494.95" 6-16-10 494.95"

6-16-9 494.95" 6-16-8 493.95" 6-16-7 493.95"

6-16-6 493.95" 6-16-5 492.95" 6-16-4 492.95"

6-16-3 492.95" 6-16-2 491.95" 6-16-1 491.95"

6-16-0 491.95" 6-16-15 490.95" 6-16-14 490.95"

6-16-13 490.95" 6-16-12 489.95" 6-16-11 489.95"

6-16-10 489.95" 6-16-9 488.95" 6-16-8 488.95"

6-16-7 488.95" 6-16-6 487.95" 6-16-5 487.95"

6-16-4 487.95" 6-16-3 486.95" 6-16-2 486.95"

6-16-1 486.95" 6-16-0 485.95" 6-16-15 485.95"

6-16-14 485.95" 6-16-13 484.95" 6-16-12 484.95"

6-16-11 484.95" 6-16-10 483.95" 6-16-9 483.95"

6-16-8 483.95" 6-16-7 482.95" 6-16-6 482.95"

6-16-5 482.95" 6-16-4 481.95" 6-16-3 481.95"

6-16-2 481.95" 6-16-1 480.95" 6-16-0 480.95"

6-16-15 480.95" 6-16-14 479.95" 6-16-13 479.95"

6-16-12 479.95" 6-16-11 478.95" 6-16-10 478.95"

6-16-9 478.95" 6-16-8 477.95" 6-16-7 477.95"

6-16-6 477.95" 6-16-5 476.95" 6-16-4 476.95"

6-16-3 476.95" 6-16-2 475.95" 6-16-1 475.95"

6-16-0 475.95" 6-16-15 474.95" 6-16-14 474.95"

6-16-13 474.95" 6-16-12 473.95" 6-16-11 473.95"

6-16-10 473.95" 6-16-9 472.95" 6-16-8 472.95"

6-16-7 472.95" 6-16-6 471.95" 6-16-5 471.95"

6-16-4 471.95" 6-16-3 470.95" 6-16-2 470.95"

6-16-1 470.95" 6-16-0 469.95" 6-16-15 469.95"

6-16-14 469.95" 6-16-13 468.95" 6-16-12 468.95"

6-16-11 468.95" 6-16-10 467.95" 6-16-9 467.95"

6-16-8 467.95" 6-16-7 466.95" 6-16-6 466.95"

6-16-5 466.95" 6-16-4 465.95" 6-16-3 465.95"

6-16-2 465.95" 6-16-1 464.95" 6-16-0 464.95"

6-16-15 464.95" 6-16-14 463.95" 6-16-13 463.95"

6-16-12 463.95" 6-16-11 462.95" 6-16-10 462.95"

6-16-9 462.95" 6-16-8 461.95" 6-16-7 461.95"

6-16-6 461.95" 6-16-5 460.95" 6-16-4 460.95"

6-16-3 460.95" 6-16-2 459.95" 6-16-1 459.95"

6-16-0 459.95" 6-16-15 458.95" 6-16-14 458.95"

6-16-13 458.95" 6-16-12 457.95" 6-16-11 457.95"

6-16-10 457.95" 6-16-9 456.95" 6-16-8 456.95"

6-16-7 456.95" 6-16-6 455.95" 6-16-5 455.95"

6-16-4 455.95" 6-16-3 454.95" 6-16-2 454.95"

6-16-1 454.95" 6-16-0 453.95" 6-16-15 453.95"

6-16-14 453.95" 6-16-13 452.95" 6-16-12 452.95"

6-16-11 452.95" 6-16-10 451.95" 6-16-9 451.95"

6-16-8 451.95" 6-16-7 450.95" 6-16-6 450.95"

6-16-5 450.95" 6-16-4 449.95" 6-16-3 449.95"

6-16-2 449.95" 6-16-1 448.95" 6-16-0 448.95"

6-16-15 448.95" 6-16-14 447.95" 6-16-13 447.95"

6-16-12 447.95" 6-16-11 446.95" 6-16-10 446.95"

6-16-9 446.95" 6-16-8 445.95" 6-16-7 445.95"

6-16-6 445.95" 6-16-5 444.95" 6-16-4 444.95"

6-16-3 444.95" 6-16-2 443.95" 6-16-1 443.95"

6-16-0 443.95" 6-16-15 442.95" 6-16-14 442.95"

6-16-13 442.95" 6-16-12 441.95" 6-16-11 441.95"

6-16-10 441.95" 6-16-9 440.95" 6-16-8 440.95"

6-16-7 440.95" 6-16-6 439.95" 6-16-5 439.95"

6-16-4 439.95" 6-16-3 438.95" 6-16-2 438.95"

6-16-1 438.95" 6-16-0 437.95" 6-16-15 437.95"

6-16-14 437.95" 6-16-13 436.95" 6-16-12 436.95"

6-16-11 436.95" 6-16-10 435.95" 6-16-9 435.95"

6-16-8 435.95" 6-16-7 434.95" 6-16-6 434.95"

6-16-5 434.95" 6-16-4 433.95" 6-16-3 433.95"

6-16-2 433.95" 6-16-1 432.95" 6-16-0 432.95"

6-16-15 432.95" 6-16-14 431.95" 6-16-13 431.95"

6-16-12 431.95" 6-16-11 430.95" 6-16-10 430.95"

6-16-9 430.95" 6-16-8 429.95" 6-16-7 429.95"

6-16-6 429.95" 6-16-5 428.95" 6-16-4 428.95"

6-16-3 428.95" 6-16-2 427.95" 6-16-1 427.95"

6-16-0 427.95" 6-16-15 426.95" 6-16-14 426.95"

6-16-13 426.95" 6-16-12 425.95" 6-16-11 425.95"

6-16-10 425.95" 6-16-9 424.95" 6-16-8 424.95"

6-16-7 424.95" 6-16-6 423.95" 6-16-5 423.95"

6-16-4 423.95" 6-16-3 422.95" 6-16-2 422.95"

6-16-1 422.95" 6-16-0 421.95" 6-16-15 421.95"

6-16-14 421.95" 6-16-13 420.95" 6-16-12 420.95"

6-16-11 420.95" 6-16-10 419.95" 6-16-9 419.95"

6-16-8 419.95" 6-16-7 418.95" 6-16-6 418.95"

6-16-5 418.95" 6-16-4 417.95" 6-16-3 417.95"

6-16-2 417.95" 6-16-1 416.95" 6-16-0 416.95"

6-16-15 416.95" 6-16-14 415.95" 6-16-13 415.95"

6-16-12 415.95" 6-16-11 414.95" 6-16-10 414.95"

6-16-9 414.95" 6-16-8 413.95" 6-16-7 413.95"

6-16-6 413.95" 6-16-5 412.95" 6-16-4 412.95"

6-16-3 412.95" 6-16-2 411.95" 6-16-1 411.95"

6-16-0 411.95" 6-16-15 410.95" 6-16-14 410.95"

6-16-13 410.95" 6-16-12 409.95" 6-16-11 409.95"

6-16-10 409.95" 6-16-9 408.95" 6-16-8 408.95"

6-16-7 408.95" 6-16-6 407.95" 6-16-5 407.95"

6-16-4 407.95" 6-16-3 406.95" 6-16-2

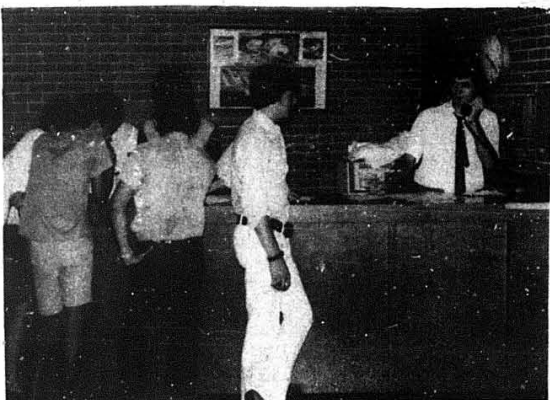
THE NEW PEOPLE



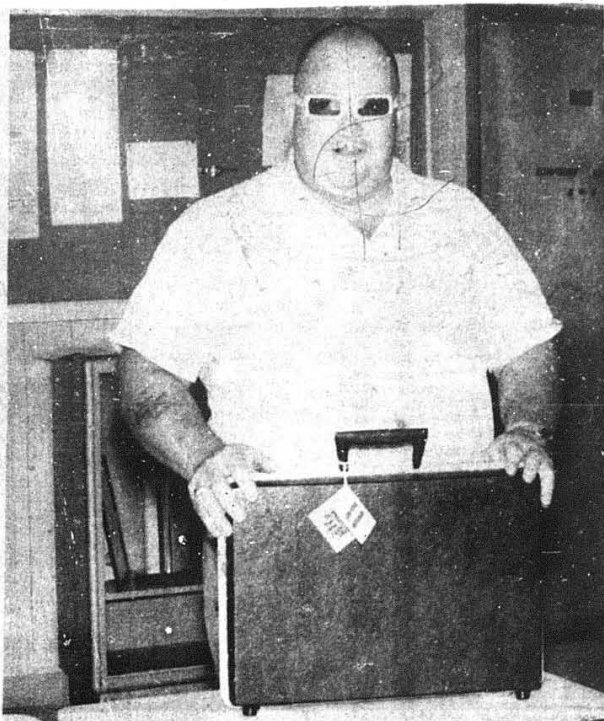
'Dr. Sain says get out your checkbooks'



What do you mean only one Men's Room?



It's your mother Seymour'

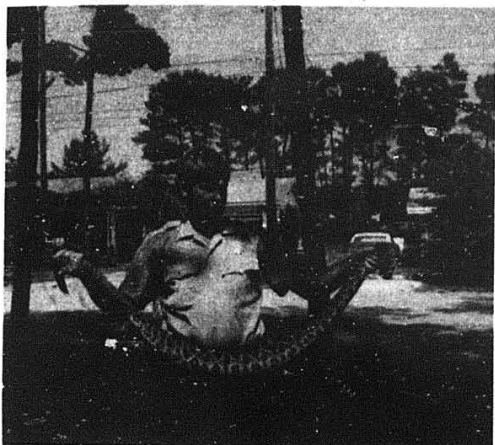


Joe new guy'round campus



Where's the Cafeteria?

RATTLER BITES THE DUST



"BWANA" BROWN

Norman Brown, an Aviation Management student and a security guard at Marco Polo Park on Interstate 95, was startled several weeks ago while making his rounds by a 5 foot plus diamondback rattlesnake.

Understandably, Norman didn't wait to ask what the snake had in mind. He drew his Browning 9 mm Hi-Power pistol and fired all 12 rounds which ended the confrontation. As the photograph shows, our former pistol team captain triumphed.

There is no truth to the rumor that our artist-use to work for the New York Times.

CAMPUS SECURED FOR ONE YEAR

On August 1st of this year the Campus Security Office completed its first year of service on campus.

Two years ago a student by the name of Roger Moody began the task of drawing up and laying out a security force which would be completely manned by students of the University.

The idea finally materialized on August 1, 1971, after extensive study and correspondence with other schools who have student security on their campuses.

On the date of August 1, 1971, the first all student security force began work. The original force consisted of 18 men with Roger Moody as chief and reached a total of 24 men at one point during the period of Dorm II security.

Today's security force consists of 18 men with Roger Moody as chief of Security, John R. Foster as assistant chief of Security and Bob Weikel as head of Traffic Division.

Assistant Chief Foster has held that position since January of this year, and Traffic Division head, Bob Weikel is newly appointed to that position.

The Traffic Division joined the Security Office in April of this year; Wayne Wedlake served as head of the division until his graduation in August of this year.

"We plan to secure this campus for many years to come", commented Moody. "There has been a marked decrease in stolen vehicle parts, motorcycles and school property in general. There has also been a decrease of complaints from students about guards not doing their jobs."

Before student security took over on campus, security was supplied by a nationally known security organization which was not very satisfactory.

WHAT'S A PLEDGE?

Traditionally a pledge has been that wide-eyed aspiring young man who used his nose as a penny pusher, took mysterious journeys into the wilderness, or found himself in a myriad of predicaments. The purpose - to mold him into a fine example of the fraternity image. The program hoped to develop the kind of man the fraternity was looking for. We at Lambda Chi Alpha are not seeking out that kind of individual who would so sublimely himself to the wish or whims of his "superiors". Lambda Chi is, and we at E-RAU are pioneers in, eliminating pledges altogether. They have been replaced by associate members who have the same privileges and responsibilities as the active brothers. There are no second class citizens in Lambda Chi. We believe that the associative period is more wisely spent in active participation and learning than servitude and humiliation. George W. Spasyk, Executive Director of Lambda Chi has outlined a program which includes the following points:

1. There is virtually no distinction between an active and a pledge.
2. The pledge period is limited to no more than 6 to 8 weeks.
3. Pledge tasks and pledge work sessions are replaced by chapter work sessions involving both actives and pledges.
4. Pledges are in no way subservient to active members, and discipline of pledges is handled within the same framework of laws and policies which govern all members.

We think we can emphasize more of what a fraternity is all about. We're looking for men who want to join in brotherhood, work toward excellence, participate in leadership, and join in meaningful community projects.

Be a Lambda Chi - it makes a difference!

ADMIN THANKS FRAT

The brothers of Lambda Chi Alpha are to be congratulated on a job "well done". Their assistance in providing an Embry-Riddle welcome and transportation to the incoming students during orientation and registration was greatly appreciated. Thanks. Harry D. Ness Vice President Admissions.

WELCOMING PARTY

The Embry-Riddle Veterans' Association will hold its annual Fall Welcoming Party at the Lakeview Mobile Home Estates Recreation Hall on Friday, September 8, at 8 p.m. The party is open to all veterans, active duty, reservists, their wives or dates, and the faculty at E-RAU. There will be free beer, soda, hors d'oeuvres and a mixed bar (\$4.00 a drink). The purpose of the party is to introduce the association to eligible veterans on campus and provide a night of entertainment for all in attendance. The Veterans' Association is the largest organization on campus and looks forward to another fine trimester this fall. The dues are only \$5.00 and the returns are plentiful. If you're a vet and would like to meet some fine people, come out tonight and join the fun.

ELECTION'72

Soon all of us will have an opportunity to exercise democracy's highest privilege - the right to vote. The purpose is to elect, among others, our chief executive. This is a unique election in that it welcomes our 18-20 year olds. To vote you must register; but that's not as hard as you might think. According to the Volusia Department of Elections, if you have lived in Florida for 60 days and consider this your home, you should go to the new County Courthouse Annex to register. This must be done no later than October 7, but it is wise to do so before this date. If you wish to register absentee, you must do so 45 days prior to the election through your county Supervisor of Elections.

The Department of Elections in the courthouse annex is open Monday through Friday from 8:30 - 4:30, and on Saturday from 9:00 - 5:00. It's your vote; make it count!



DORM ROOM SHORTAGE

Many new and returning E-RAU students are presently living in motels in the Daytona Beach area when they should have a room in Dorm I. Why? Well, I tried to find out, but Mr. Hoffstater, Director of Student Housing, was not available for comment, and the Dean of Students' secretary, Mrs. Humphrey, was too busy trying to straighten the situation out to give me an interview.

The only information available on the problem is a press release from Mr. Bob Cessna, Director of Public Relations, which states that a reshuffling of students is in progress. Students who desire to live off campus will be allowed to in accordance with E-RAU policy, and this should make some rooms available.



I'll take the one in the middle.

- DISCOUNT PRICES TO E-RAU STUDENTS
- MACHINE SHOP SERVICE
- BALANCING
- BLUEPRINTING



ONE OF DAYTONA'S MOST COMPLETE INVENTORIES OF:

- DOMESTIC & FOREIGN AUTO PARTS
- REPLACEMENT PARTS
- HI PERFORMANCE PARTS

VOLUSIA AUTO PARTS // 252-9642

841 Volusia Ave. // & machine shop

MILEX TUNE-UP

20% DISCOUNT TO ALL ERAU STUDENTS

SPECIALISTS IN ELECTRONIC ENGINE ANALYSIS TUNE-UPS, AIR CONDITIONING, AND BRAKES.

- EACH TUNE-UP INCLUDES
- .40 STEP ELECTRONIC ANALYSIS
 - .30 POINT COMPLETE LABOR TUNE-UP
 - .ELECTRONIC CARBURETOR ADJUSTMENT
 - .6000 MILE/120 DAY WRITTEN GUARANTEE

- .ENGINE TUNE UP.
- .AIR CONDITION.
- .BRAKES.
- .CARBURETORS.
- .STARTERS.

.ALTERNATORS.

OPEN MONDAY-FRIDAY 7:30-6:00 SATURDAY 7:30 - 1:00



253-2577

885 volusia avenue



New Instructors

The College of Aeronautical Studies at Embry-Riddle Aeronautical University has seven new faculty appointments for the fall term to accommodate the increased student enrollment and curriculum. Mr. Richard P. Clukey will begin the fall term as an instructor in Aeronautical Engineering and Mathematics. Mr. Clukey, a member of the Experimental Aircraft Association, previously worked as a Technical Staff Assistant to aerospace vehicle design at the University of Texas at Austin. He holds an M.S. Degree in Aeronautical Engineering and is originally from Dexter, Maine. Dr. Howard D. Curtis will be an Associate Professor of Aeronautical Engineering. He comes to E-RAU from Tuskegee, Alabama where he was an Assistant Professor of Mechanical Engineering. Dr. Curtis, a member of the American Society for Engineering Education, earned his Ph.D. in Engineering Science from Purdue University. Miss Mary C. Fischer is now on the faculty as Assistant Professor of Mathematics. She holds a M.S. Degree in Mathematics. Miss Fischer, from Clinton, Tennessee, was formerly a mathematics teacher in the Roanoke County Schools in Salem, Virginia. Mr. Donald J. Kemerait has been added as an instructor of Aviation Management. Mr. Kemerait comes from Temple Terrace, Florida, and holds an M.S. in Business Management. He was formerly a coordinator with Honeywell, Inc. of St. Petersburg. Mr. James G. Ladesic, from Pittsburgh, Pennsylvania will instruct in Mathematics and Engineering.

He has a B.S. in Aeronautical Engineering and is pursuing an M.S. Degree at F.T.U.. Before coming to E-RAU, he was with the General Dynamics Corporation as a Manufacturing Engineer. Dr. William E. O'Connor, Assistant Professor of Aviation Management, will be teaching Economics of Air Transportation. Dr. O'Connor earned a Ph.D. in International Studies and is author of *Economic Regulations of the World's Airlines: A Political Analysis*. He comes from Washington, D.C. where he was formerly employed by the Civil Aeronautics Board for 18 years. Mr. Alexander T. Wells is an Assistant Professor of Management. He has a M.A. in Economics and was with Rollins Burdick Hunter, Co. of Chicago, as Assistant Vice President and Assistant Manager in the Aviation Department.

MUSCULAR DYSTROPHY CAMPAIGN SUCCESSFUL

The Muscular Dystrophy campaign which was conducted on campus the first of the tri by the SGA netted the amount of \$107.40. A check was presented to the telephone on Sunday night, September 3 in the name of the staff, students and faculty.

Thanks again.

Jim Bare
Campaign Chairman
National Insurance Inspection Agency has openings for part time field representatives. Requirements, Male or Female, over 21, have own car, and have a minimum of 4 hours a day free. Earnings average \$4-600a month. Call Mr. Roe, 255-5404 or 255-5405 for an appointment.

PLACEMENTS

The Placement Office has the following employment opportunities:
Agent needed for Computer Airline in Gainesville.
Loadmaster - steward needed for West Palm Beach area.
Airframe and Powerplant needed with Helicopter experience in Bahamas.
Flight instructor needed in Charleston, W.Va.
Airframe & Powerplant needed with U-21 and UH-1 experience in Athens, Greece.

Communications advisor needed in Daytona Beach.
Flight Attendant needed working out of Orlando.
Airframe & Powerplant needed at Aero Commander Albany, Georgia.
Airframe & Powerplant needed in Miami Area for light aircraft.
American Institute of Aeronautics and Astronautics is reviewing resumes for a Director of Student Programs.
There are openings for engineering graduates in the following areas:
Advanced Propulsion
Applied Research
Engine Controls

Engine Development
Mechanical and Analytical Design
Systems Analysis
The Naval Officer Information Team will be on Campus at the Student Center from Sept. 11, to Sept. 15.



K
M
A
R
T

P
L
A
Z
A

Sorrento
DELICATESSEN
OVER 50 VARIETIES
OPEN 7 DAYS
PHONE 255-1817

Submarine



HOURS
MON. - SAT.
8 - 10
SUNDAYS
10 - 6

**EAT IN OR
TAKE OUT**

**FOR YOUR EATING PLEASURE, WE HAVE
50 VARIETIES OF SANDWICHES PLUS
DINNERS AND HOMEMADE SALADS**

**CATERING AVAILABLE FOR
SMALL OR LARGE GROUPS**

**ANTIPASTO
MADE TO ORDER**

book & tapeworm

posters

incense

black lights

THE WELL-EQUIPPED AQUARIUM

candles

856 N. NOVA
HOLLY HILL PLAZA
2224 S. ATLANTIC
ACROSS FROM PIKU TIKI
IN DAYTONA BEACH

**THIS IS WHERE
IT'S AT!**

SUPER UNISEX

**GUYS
DO YOUR OWN THING!
LONG MAY BE IN, BUT
SHAPED IS WHERE IT'S AT.**

SHAMPOO
CONDITIONED
BLOWER STYLED

\$7.00

**SUPER NO SET-STAYS GREAT
WASH & WEAR HAIRCUT**

• SHAG
• GYPSY
• LIONESS

\$5.00

THE
NATURAL
LOOK

SHTICK FOR BEAUTY

SUPER UNISEX

**KMART PLAZA
GRANT PLAZA**

**252-3783
253-3689**

OPINION POLL

WAS ORIENTATION A SUCCESS?

Recently an opinion survey was conducted by the Guidance Office to determine students' reactions to the innovative orientation process that occurred the week of 21 August 1972. Naturally, this survey was limited to only new students entering Embry-Riddle for the first time. Of the 70 students who participated in this survey, 49 were freshmen, 12 were sophomores, 3 were juniors, and 6 were seniors. The tabulated results, together with some selected comments, are presented as follows:

TESTING	GOOD	POOR	NO OPINION
	48	4	15

ACADEMIC ADVISING	GOOD	POOR	NO OPINION
	42	21	6

ORIENTATION MEETING	GOOD	POOR	NO OPINION
	53	6	8

PMM #1 (Drugs)	GOOD	POOR	NO OPINION
	42	4	22

PMM #2 (sex)	GOOD	POOR	NO OPINION
	28	7	31

PMM #3 (Adjustment)	GOOD	POOR	NO OPINION
	40	8	20

MANUALS FOR PMM'S	GOOD	POOR	NO OPINION
	45	11	13

REGISTERING FOR CLASSES	GOOD	POOR	NO OPINION
	24	19	3

The numerical results of the survey, together with all of the students' comments are being prepared for a final report that will be reviewed by the staff and faculty involved. The results of this study go a long way toward indicating areas for improvement and revision. We thank the new entering students for the time and trouble you took to complete these opinionnaires. We would appreciate any suggestions to improve future orientations.

We would also like to take this opportunity to extend a personal thanks to the members of Lambda Chi Alpha for their generous assistance during the week of registration. Their efforts contributed immeasurably to the overall success of the Fall '72 registration.

TERM PAPERS

Send for your descriptive, up-to-date, 128-page, mail order catalog of 2,300 quality term papers. Enclose \$1.00 to cover postage and handling.

WE ALSO WRITE CUSTOM MADE PAPERS.

Term Paper Arsenal, Inc.
519 GLENROCK AVE., SUITE 203
LOS ANGELES, CALIF. 90024
(213) 477-8414 • 477-5483
"We need a local salesman"

HU 206

JOURNALISM ELECTIVE PLUS STAFF REORGANIZATION CAUSE "NEW LOOK" OF AVION

The recent addition of HU-206, a course in journalism, offers interested students two elective credits in Humanities and an opportunity to become staff members of The Avion, The Phoenix, and The Main Frame, Embry-Riddle's student publications.

Students now registered in the course are learning page makeup, feature, news, and headline writing besides covering beats and writing stories for the first issues of The Avion.

Later they will be assigned permanent staff positions on the publication of their choice.

Also, as the Avion masthead indicates, the structure of the paper has been reorganized. Staff and journalism class members have been elected to the following new posts: Photo Editor, Jerry Erickson; Feature Editor, Charles McMahon; News Editor, John Collins; Sports Editor, Robert Argilla. Nancy Coates and Curt Poree were re-elected by Avion staff members to their previous positions as editor and associate editor.

All students who are interested in writing, photography, art, journalism techniques, and in improving the quality of our student publications are urged to register for the Spring semester offering of the course.

See Mrs. McLemore in office 103, Building A, if you have any ques-

tions regarding joining the next class. As she stated, "Embry-Riddle University should and can have three superior student publications if students who are willing to work - and to learn - will join us."

Changes more noticeable to the Avion's readers include the new five-column page format and more student oriented coverage of University events and activities.

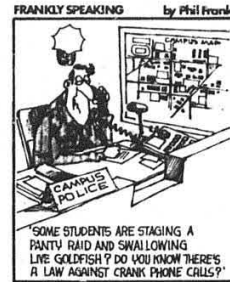
CO-OP

Gary T. Rice, a student at Embry-Riddle Aeronautical University in Daytona Beach, has been assigned to the Aviation Division of the Jacksonville Port Authority as part of a Cooperative Education Program. Initially, Mr. Rice will be involved within the structure of operations concerning both field and building maintenance. Work in the area of security will also be scheduled for his first co-op period. Future co-op periods include plans for administration support and management.

Mr. Rice is enrolled in the Aviation Management Degree Program at E-RAU. He has worked as a student assistant, and served as Vice President of the Young Republican's Club at E-RAU. He served in the U. S. Navy


as an Air Controller and attended Trenton State Teachers College before coming to Embry-Riddle.

Gary's co-op work will be worth six credit hours toward his BS degree in Aviation Management. E-RAU stresses "reality" in the classroom and on campus so students will be prepared for the real world after graduation.



SIGMA PHI DELTA

Well, Fall tri is already here, and the brothers are still trying to get over those leaving home blues and bear down to start working. We're going to be busy this Fall as we are going to host our Eastern Providence's convention here at Pi Chapter. There are many little details that must be handled, but we have some of the finest organizers here since the Great Train Robbery. Our rush is scheduled for the 15th of September, and we hope to see many prospective pledges there. Football season is also coming up, and we have a secret weapon. I can't tell you too much about it, but his name is Jim, and he has been known to make 300 pound guards run away with his stare (or maybe it's the smell of those awful cigars of his). See y'all at the rush!



- The Beef & Bottle Story -

OUR CONCEPT IS A SIMPLE ONE-- A HEARTY DRINK, AN INVITING SALAD BAR, A THICK STEAK AND A MAMMOTH BAKED POTATO--

SERVED ATTENTIVELY
BY WAITERS IN AN INTIMATE DINING ROOM,

HAPPY HOUR EVERY FRIDAY 4:30 - 6:30
HORS D'OEUVRES AND ALL DRINKS 1/2 PRICE

200 MAGNOLIA AVE.
253-2153

DAYTON TIRES



Volusia Co. Dist.

SIZE	PRICE	TAX	SIZE	PRICE	TAX
F60x14	27.95+	2.76	E70x14	25.95	2.56
G60x14	29.95	2.92	F70x14	26.95	2.60
F60x15	28.95	2.92	G70x14	27.95	2.77
G60x15	29.95	3.03	G70x15	28.95	2.88

Pick Up Your Group Discount Purchase Card At The Purchasing Office

ALL TIRES MOUNTED AND BALANCED

SUNRISE OLDS-TOYOTA
340 North Beach Street Telephone 255-7475
DAYTONA BEACH, FLORIDA 32015


- THE PLACE TO RENT AIRPLANES -

Volusia Aviation Service INC.

Daytona Beach Regional Airport
VOLUSIA COUNTY'S OLDEST FLYING SERVICE

Cessna 150	Cessna 172
Cherokee 140	Skyhawk (Full IFR)
Bonanza 225	Bonanza 260
Piper Apache	Aztec "C"

Flight Examiner on Staff D-18, P-23 Club Rates Available



The AVION is a publication for Embry-Riddle students partially financed by the Students' Activity fee through the Student Government Association.

Articles may be submitted to the Avion from publication by the administration, the faculty, and the student body. The AVION deadline is Friday afternoon at 4 P.M. Please mark all items AVION, and deposit in the box outside the trailer, inside the trailer, or ERAU Box 1568.

JOBS

The following jobs are available from the Student Employment Office:

Bill's Shed
North Ridgewood Ave.
(Rte. 1)
Ormond Beach
677-4184
See Fred Iannotti
Needed: someone for unloading trucks and cashing. 6 days a week from 1:30 PM until 9:00 PM \$1.70 to start, increase shortly.

International House of Pancakes
Volusia Avenue
Daytona Beach
Phone 253-3548 or home phone 253-8402
Mr. Wyatt
Busboys and dishwashers, all hours several needed \$1.60 per hour, nighttime waitress from 5 - 1:00AM \$1.00 per hour plus tips.

Florida Liquor and Package Store
917 Ridgewood Ave.
255-4062
Mr. Roberts or Mr. Capello
Part time clerk from 4PM to 9:00 PM. \$1.60 per hour MUST BE OVER 21 YEARS OLD.

STUDENT WIFE
Patty & Marty's Kings Inn
Atlantic Ave.
Daytona Beach
Needed: Cocktail Waitress 3 nights a week or more, \$.75 per hour, plus tips

Sargeants Hess Station
New Smyrna Beach
255-2741 Daytona number
Attendant needed- 5 days from 3-11 PM or part time, 2-3 days from 3-11 PM. \$1.60 per hour

Howard Johnson's
US 1 & 95
Dishwashers & Busboys from 6-11 PM
\$1.80 per hour
can use 3 students as many nights as you can work

Oriental Catering Service
476 Hollywood Ave.
Ormond Beach
677-2978
Employer: Twila Heather
Position: Training for catering, \$2.00 per hour

Sorrento's Delicatessen
K-Mart Plaza
See Mr. Di Martino
255-1817
6 days a week from 11 AM to 3 PM
Experience helpful, but not necessary- Salary based on experience

South Peninsula Marina
3948 South Peninsula Dr.
(So. of Port Orange)
767-3495
Ask for Mr. Schneider
Position: General helpers \$1.40 per hour
2 boys needed afternoons 25-30 hours a week.

Huntington Square Convalescence Home
100 Broadway
Daytona Beach
Mr. Lockley
Position: Maintenance & custodial and orderlies \$1.60 to start
Will work around your hours.

Dixie Vim Gas Station
Corner of Nova Road and Big Tree
Employer: Edgar
Phone 767-5776
Position: Attendant
Weekends from 3:00 PM - 10 PM, \$1.60 per hour
MUST BE OVER 21

Capri Motel
832 North Atlantic Ave.
252-2555
Position: General Maintenance- 5 days, 4 hours \$1.75 to start

Carriage Cove Mobile Homes
1616 So. Nova Road
So. Daytona,
767-9922
Afternoons-see Mr Proper
Position: General Maintenance, \$2.00 per hour

CHIN'S FINE FOOD

2116 S. ATLANTIC AVE. (ATA)
Daytona Beach Shores 255-3395

INTRODUCING
THE LATEST IN CASUAL GOURMET DINING
The Chinese-American Buffet

- MENU CHANGED DAILY -
Served 4 P.M. to 9 P.M. Per Person \$2.50
ALL YOU CAN EAT - including beverage....

OPEN 7 A.M. Breakfast Served
7 A.M. to 11 A.M.
Business Men's Lunch starting at 95c
The Ideal Spot For Family Dining!

2116 SOUTH ATLANTIC AVENUE - ATA -

SERVED DAILY
Egg Rolls, Soup, Salads, Vegetables, Rolls, Beverages,
Desserts. DAILY ENTREES LISTED BELOW:

CHINESE	AMERICAN
Chow Gai Sing	Baked Sugar-Cured Ham
Beef Pork Fried Rice	Fried Fish
Paper Steak/Manchurian	Fried Chicken
Swast & Sweet Pork	Roast Legs of Pork
Beef Pork Fried Rice	Fried Fish
Suk Bon Chicken Chow Mein	Fried Chicken
Swast & Sweet Pork	Beef Steak
Egg Foo Young	Fried Fish
Chicken Fried Rice	Fried Chicken
Paper Steak/Manchurian	Beef Steak
Swast & Sweet Pork	Fried Fish
Beef Pork Chop Szech	Fried Chicken
Beef Chow Mein	Beef Steak
Beef Fried Rice	Fried Fish
Swast & Sweet Pork	Fried Chicken
Shrimp with Lobster Sauce	Fried Chicken
Shrimp Chop Szech	Fried Chicken
Shrimp Chow Mein	Fried Fish
Beef Pork Fried Rice	Fried Chicken
Shrimp Egg Foo Young	Fried Chicken
Swast & Sweet Pork	Fried Chicken
Beef Pork Chop Szech	Fried Chicken
Beef Fried Rice	Fried Fish
Shrimp Egg Foo Young	Fried Chicken
Swast & Sweet Pork	Fried Chicken

陳槐



BURGER KING
Well Balanced
Whopper
Fries
Coke
the free Whopper this week goes to



Stereo 500
CARTAPE HEADQUARTERS
PLAYERS from \$39.95
INCLUDES LIFETIME GUARANTEE
TAPES \$3.99 3 for \$11
DYNACO COMPONENTS
WOLLENSAK 3M RECORDERS
DIAMOND NEEDLES
BSR TURNTABLES
MUNTZ Stereo 500 West End K-Mart 255-3892
1340 VOLUSIA AVE. - NEXT TO CLOTHING QUARTERS

Wollensak 3M
model 8050
EIGHT TRACK RECORD/PLAY
PRE-AMP DECK
reg \$179.95 SALE \$149.95
SPECIAL TRIAL OFFER
Buy one get one
free
Dynosound
8 track blanks
40 min. 2 pack \$2.49
80 min. 2 pack \$2.99
Dynosound, the 8-Track of the Superstars
8 TRACK BLANK
8 TRACK BLANK

DISCOUNT AUTO SUPPLY
936 VOLUSIA AVE. 252-4844 252-2542
Do-It-Yourself Save on Parts & Accessories
STARTERS - GENERATORS
ALTERNATORS - BATTERIES
SOLITRON TRANSISTORIZED
C.D. IGNITION SYSTEMS
STEWART - WARNER
GABRIEL HI JACKERS

THE international HOUSE of PANCAKES
IT MAY SAY PANCAKES ON THE OUTSIDE, BUT... THERE'S LOTS MORE ON THE INSIDE!
FOR BREAKFAST - LUNCH DINNERS - LATE SNACKS
933 VOLUSIA AVENUE DAYTONA BEACH
OPEN 24 HOURS
Your Host: Gary Wyatt

20% OFF
When you eat at the
AIRPORT RESTAURANT & LOUNGE
UNDER MANAGEMENT OF
Jerry's Caterers
If you feel like this guy looks after the flight, refresh yourself at our lounge.
20% OFF IN THE RESTAURANT
10% OFF IN THE LOUNGE
AIRPORT EMPLOYEES, EMBRY-RIDDLE STUDENTS AND EMPLOYEES, WITH IDENTIFICATION

