

Abstract

currently one of the most popular fishing dependability and price point make it the both beginner and experienced fishermen. is improperly disposed of, the line poses a environment because it entraps and entangles life, causing the slow degradation of an ect entails local recovery and recycling ent fishing line from the Volusia County s. Through complete implementation of this s as an impetus for the vision of a cleaner, tural marine ecosystem. Using previously s from the BoatUS foundation, the project ating these bins in more convenient and fishermen. As of the creation of this poster, prepared 10 new collection bins ready for ction of the line will begin November 17th onofilament gathered will be shipped off to e recycling center.

Motivation

important
system
le to
d
:
Florida
sion,
ce
of
line



Methods and Equipment

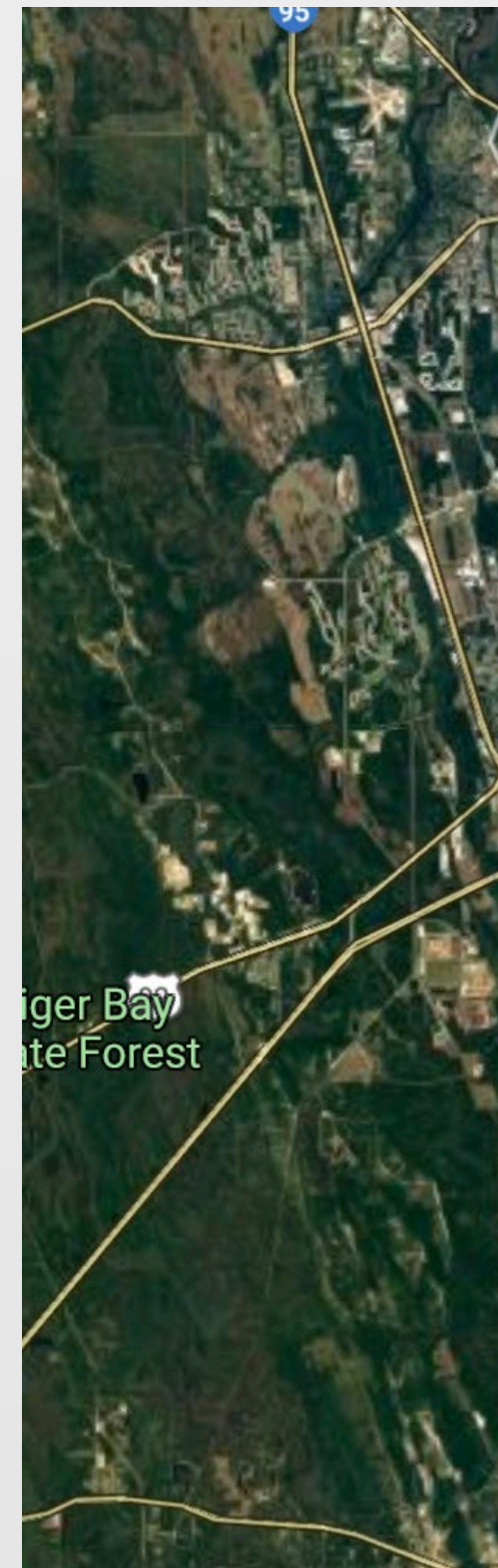
- After much deliberation, the best solution to the monofilament fishing line problem was to support the recycling efforts of the BoatUS foundation.
 - Agency's efforts have safely disposed of an estimated 5,000 miles of line (BoatUS).
 - Disposed line sent to Berkley Fishing Company collection center
 - Spirit Lake, Iowa
 - Recycled into fish habitats and tackle boxes
- The collection bins were constructed with the following materials:
 - 2-foot 6-inch Diameter PVC Pipe
 - PVC Elbow
 - PVC Cap
 - Adhesive
 - BoatUS Recycling Decals (supplied at no charge)
 - Zip Ties and Hose Clamps (for mounting)
 - Postage and Postage Boxes (Send the Recycled Line to Berkley)
 - Reciprocating Saw

The total cost of this project totaled at \$150 for material for 15 collection bins.



Results and Further D

- 10 Bins created
- Coordinated with the Monofilament Recovery Program to ensure the bins will be ca graduates
 - Bin GPS locations will be added to the website for public knowledge
- Have Chosen Potential Locations :
 - Areas at Ponce Inlet, the Dunlawton Boat Ramp, Swoop Site Boat Ramp, Inlet Harbor Boat Ramp, Dunlawton Fishing Pier, and Granada Fishing Pier.
 - Awaiting permission from county officials for implementation



**Red Syn

Work Cited

Ashe, D. (2012, April 23). Getting My Hands Dirty with Recycling.

Edmonston, C. (24, January 16). 2014 Boat U.S. Manatee Entanglement/Ingestion Impacts- Keep them out of the waterways!. (n.d.). Monofilament Recovery and Recycling Program

Monofilament Recovery and Recycling Program