

2-9-1968

Informer Vol 4 Issue 3

Embry-Riddle Aeronautical Institute

Follow this and additional works at: <https://commons.erau.edu/informer>

Scholarly Commons Citation

Embry-Riddle Aeronautical Institute, "Informer Vol 4 Issue 3" (1968). *Informer*. 31.
<https://commons.erau.edu/informer/31>

This Book is brought to you for free and open access by the Newspapers at Scholarly Commons. It has been accepted for inclusion in Informer by an authorized administrator of Scholarly Commons. For more information, please contact commons@erau.edu.

The Informer

SPONSORED BY THE STUDENT GOVERNMENT ASSOCIATION

VOLUME IV

FEBRUARY 9, 1968

NUMBER 3

AERO-COMMANDER RECRUITMENT PROGRAM TO BEGIN AT EP

The Aero - Commander Corporation is offering a co - operative education program to Engineering and Management students beginning next trimester.

The Aero-Commander Corporation, located in Albany, Georgia, is a division of Rockwell Standard. The school will select two Engineering students and one management student each trimester for the program.

Under the program, the students will work for AC for one trimester prior to their junior year and then go to school for two trimesters. They will return to AC for another trimester and then return to Embry-Riddle for the two remaining trimesters of their senior year. The corporation will finance the students' senior year of school. In exchange, the graduates will work for AC for the equivalent of the time that the corporation paid their tuition.

These students will receive full salary from AC while working both before and after graduation.

MEMORANDUM FROM:

THE DEAN OF STUDENTS TO: THE STUDENT BODY

The Board of Trustees has approved an Annual Convocation - Graduation ceremony. The first such convocation will take place at 9:00 a.m. on April 19, 1968, at the Peabody Auditorium in Daytona Beach.

The entire student body will be required to participate. Students who will graduate in the calendar year 1968 will



SENIOR GIRLS from Mainland High School in the Vocational Office Education Division of Mainland, visited Embry-Riddle last week to tour the campus and learn more about the college programs offered to women. Nan Green, associate director of admissions for women, acted as guide. Pictured is Willard J. Bolton, chief instructor at the Jet Laboratory, demonstrating jet engine equipment to the girls.

appear in academic costume, and will be recognized on the program and by class. Students who will actually complete their requirements for a diploma/certificate by April 19 will be graduated at this ceremony.

Graduates are required to pay all fees before April 1, 1968.

Students appearing in academic costume must be measured at the Bookstore during the period between March 1 - 15. (1968 graduates not graduating in April must pay one-half their fee at this time.)

Announcements, invitations will be mailed on the basis of four per graduate.

Students who wish to be excused from this convocation must present themselves to the Dean of Students and obtain written permission.

WHAT YOU DON'T KNOW ABOUT THE DRAFT LAW..... COULD KILL YOU!!

The draft commands compliance to its rules without telling everyone concerned what all those rules are. It is entitled to compliance but not through ignorance of those affected. We discovered how little is known about the draft law and how difficult it is to find any information and decided something had to be done. We have spent months researching the law and have found a lot of facts that are not generally known outside the Selective Service Headquarters.

1. MANY persons are not even required to register for the draft.

2. If you are not required to register and volunteer, you will be registered WITHOUT BEING TOLD

(Continued on page 6.)

SPEAKING OUT



the president's corner

Dear Student:

Now is your chance to join the new 1968 Yearbook Committee, sponsored by the Student Government Association. The next meeting will be held on Tuesday, February 6, in Room 210 at 11:30 a.m.

As President of the Student Government Association, I personally feel responsible for what ever this organization does. Therefore, I would like to clarify an old issue on the previous yearbook, the 1967 Phoenix did not come from the present action S.G.A. It was organized and controlled by the Student Government Association under the leadership of Mr. Roger McDade.

The new yearbook will be better supervised and controlled by the Administration and the Student Government Association.

With your help and support we will have an even better yearbook for 1968.

Sincerely yours,

Donald F. Kaltenbach
Donald F. Kaltenbach,
President, Student
Government Association

ROVING REPORTER

By Gary Anderson

Recently some Embry-Riddle students were asked, "Aside from paying your tuition, do you think you owe the school anything?" Here are some of the answers.

"Yes, to promote the school's image, so I can be proud to say that I go here."

"no."

"Are you kidding?"

"Sure. The school is

only what the students make it."

"If it doesn't hurt your studies, you should take part in activities."

"No, I've got enough problems."

"I guess so."

"No, to me it's a straight business proposition."

"If you're good in sports you should go out for them."

FROM THE SUGGESTION BOXES

By Ray Loehner

I wonder if you would look into the matter of organizing a student directory.

Dan Rausch

Ed. The idea of a student directory has been brought before the S.G.A. as a resolution and placed in a committee for further action.

The Anonymous Parson:

Congratulations on your article "Campus Gods". Several of us believe that it is the best article in the INFORMER. So keep up the good work!

Randy Wittig

Dear Editor,

I would like to complain about the existing inadequacies of the seating facilities of Room 103 in the Academic Building. I do much of my studying in Room 103 and find it to be cramped and uncomfortable. The seats are not contoured and no desk is provided. Leg room is nill; in fact, it is zero. It is very dif-

ficult to balance a text between your knees and chest and still manage to read.

The facilities in Room 107 are far better suited to studying due to increased leg room and large contoured seats. I have spent several hours of my time in both these rooms, and find that Room 107 far exceeds the comfort of Room 103. Can the S.G.A. look into this situation? I feel it is their responsibility to flush out all inadequate facilities for the students. Thank you.

James "Duffy" Cate

Ed. A good stirring up is definitely necessary and we hope these problems are wiped out soon.

NOTICE FROM THE SCHOOL

NURSE

Unless you either call in to the Dean (ext. 46) or to the Health Service (Ext. 73) or send a note by someone the first day of sickness, excuses will not be given.

G. Morton, R.N.



WHO PUT THOSE BENCHES THERE?

(The SGA did!!)



BASKETBALL

BELIEVE IT
OR ELSE

By Steve Senderling

Thoroughly unbeknownst to the majority of our student body, Embry-Riddle (and this is the "believe-it-or-else" part) has and sponsors a basketball team. It all started in the fall of '66 when a few interested ERAI students got together and joined a local Industrial League. The team encountered much experienced and talented competition, and hopes were high that the next season would be better. Well, the "next season" is now more than half over, and although some improvements has taken place, ERAI's Cagers are still seeking more.

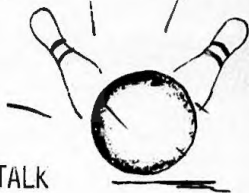
One of the main problems currently confronting this year's team is that it is not getting the support it needs from either the student body or the Administration. Although the school paid for the small entrance fee in the DeLand Independent League in which we now play, it appears that Riddle's official active support has stopped there. The team provides its own uniforms (save a few jerseys currently on loan from the soccer department), plus its own transportation to and from DeLand for the games. We heard that the school has purchased sixteen first-rate uniforms for the team, but the order was cancelled due to the much talked about and controversial budget cut suffered by the athletic department.

The lack of student support, we believe, has been a direct result of the lack of publicity concerning the team. Ways of overcoming this in the future have been seriously discussed, and efforts are currently in the mill to employ the Student Government Association's active support of not only basketball, but of all other athletic activities here at Embry-Riddle. We hope that these efforts will bring about a significant change not only in informing the students of what is going on, but also in the Administration's current attitude concerning all sports. I'm sure that we would all like to see more of a variety of inter-collegiate sports than what we now have. But to do this, we need your help, and most of all, your active support.

Our next game will be February 12th at 7:00 p.m. at the Jackson Gymnasium, DeLand. The Eagles are now in fifth place with four wins and eight losses. Greg Aumann and Steve Senderling share high point honors with 146 & 138 points this season. John Flewellin, who played for Tennessee State before coming to Riddle and has the highest point-per-game average, has scored 108 points--destined to be the Eagles high scorer of the season. Player-coach Ray Lee is next in line with 84. Other high scorers include Irv Peele with 79 and Bob Underwood with 67. Other members of the team include Gene Mustin, Norman Cole, Jim Herron, and Calvin Betz.

In all, I would like to say that we hope that many of you will be out to see at least some of our remaining games. If you would like to attend any of these games, or are interested in playing, don't hesitate to contact any member of the team or call 252-5887 or 677-

8247 for information, directions or transportation. Schedules of remaining games will be posted on the bulletin boards. SEE YA THERE!



GUTTER TALK

By Gene & Joe

The bowling results last week show a real scramble for the top positions.

Team #7 is still in first place with a 10-2 record followed by four teams tied for second place with 7-5 slates.

For the second week in a row Gil Gauthier has bowled the high series; this week he rolled a 530. He also had the high game of the evening shooting a 205. High team game and high team series was recorded by team #3 with totals of 602 and 1750 respectively.

The standings for the third are as follows:

1	#7	10-2
2	#1	7-2
3	#3	7-5
4	#6	7-5
5	#8	7-5
6	#5	6-6
7	#9	6-6
8	#2	5-7
9	#4	4-8
10	#10	1-10



WRESTLING MATCH

THERE WILL BE A WRESTLING MATCH FEBRUARY 26 AT THE DBJC GYM AT 7:00 P.M. PLEASE COME AND GIVE OUR BOYS YOUR SUPPORT.

FLIGHT LINE NEWS

By Stephen Avery

This spring Embry-Riddle has 300 students enrolled in straight flight or combined courses.

Due to bad weather lately, flight students have not been able to fly as much as they should. But those enrolled in instrument flight have had their share of flying in the clouds.

A reminder to flight students about their appearance. It seems we have a few who are still wearing beards and not wearing proper apparel. It's really not any of my business what you wear or look like. I could care less, but how many pilots do you see in the airlines wearing tennis shoes, etc.?

A notice to pilots expecting to graduate this trimester. Stop in Mr. Ford's office and pick up a form for your certificate. It has to be handed in six weeks prior to graduation.

Several pilots agree with me about the matter of ERAI's planes, especially the twin Beechcrafts. They are not being kept up to par. The mechanics have done a great job on the planes so far but what about some DME's and at least one transponder? The twin engine planes are usually grounded several times a week. They look nice on the ground but would be more useful in the air.

Good news for flight students. After paying several thousand dollars for your flight training you are required to pay an additional sum for your graduation certificate. The certificate couldn't cost more than \$1.00 but \$20.00 is absurd and a statement from the faculty member in charge of this unreasonable fee should be given immediately. If this school is a non-profit organization somebody has got to be kidding!

If any pilots have news concerning the flight line or gripes, I would appreciate it if you would contact me either by leaving a message in my mail box 864 or contacting one of your Student Government representatives from the flight line department: Chuck Hansen, Alex McLenen, or Stephen Avery.

There will be a meeting of all Aviation Management students in the Academic Building, Room 106 at 11:30 a.m., February 13th to explore this program and others.

PLACEMENT OFFICE

Positions open for Aviation Management graduates at the Atlanta Airport. For information contact the Placement Office.

February Interviews

Eastern Airlines - Wednesday, 14th - A&P - Miami, Florida

Boeing Company - Friday, 16th - Engineers, AE, AME - #1 - Cape Kennedy
#2 - Vertol-Penn

United Airlines - Monday, 19th - A&P

Douglas Aircraft Co. - Wednesday, 21st - Engineers, AE, AME

AT THE RIVIERA



50¢ PER STUDENT WITH I.D.
WATCH FOR FURTHER INFORMATION
ON "DATE MATE" SERVICE.

CONTACT RICHARD BEREZANSKY
Box 63

LITTLE THEATRE

The Little Theatre of Daytona has announced that the Thursday night rehearsal is open to ER students free of charge.

Greeks

FROM THE FRATERNITIES

PI SIGMA PHI

Groan!! Oh, excuse me. I didn't see you reading. As promised, I have a whole bunch of news for you about Embry-Riddle's first social fraternity. Let's begin with high praise for our pledge class. It is only six days old and they are all ready signs of being the most ingenious pledge class ever to grace ERAI's campus. They were given an assignment to get invited to dinner by a stranger, so they went to WMFJ and got "Tim Terri-fic" to announce that they needed help, and anyone interested could call. So far, they have three invites to dinner.

Too bad they didn't fare so well Daturday night and Sunday. In the first pledge vs. brother football game, the pledges came out second best...in fact, they did not even come out second

best!! Four girls from Delta Zeta Sorority played a better game.

The pre-kickoff ceremony made up for their miserable performance. The pledges, completely surprising and pleasing the brothers, had a plane towing a banner with "Pi Sigma Phi pledges are the best" up and down the beach. To my knowledge, this is the first time this has ever been done and will be hard to top by any pledge class of any fraternity.

And then Sunday night. Oh, Sunday night...sweet memories.....beachside fires...happy (?) pledges.....happier brothers....Oops!! Well...heh,heh...you don't want to hear about that...I mean...well...uh...maybe in the next INFORMER.....

ALPHA ETA RHO

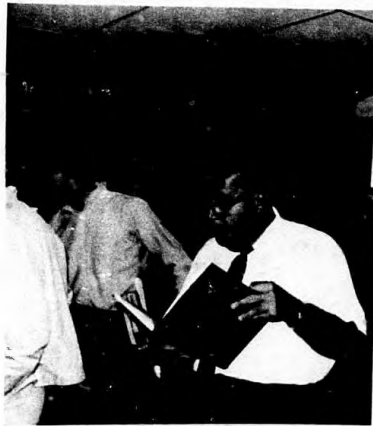
By Richard Berezansky

Welcome, pledges! The pledge period is already one week old. The pledges of Alpha Eta Rho can be recognized by a pledge pin and book. This trimester the pledges are Bob Dreher, Jerrie Morrissey, Mark Zink, Ron DeVoy, Bob Freedman, B. Fuller, Gary Anderson, Chet Lawson, Doug Mehring, Don Henck, S. Drew, Russ Roell, Rich Wisner. Good luck, pledges!

The Fraternity plans to visit Fairchild-Hiller to see the reconstruction of the C-119. This will be an all day outing for members and pledges. In the future a weekend VIP tour of Penscola Naval Air Station is in planning.

ALPHA ETA RHO SPOTLIGHT

Don Kaltenbach, a Senior at Embry-Riddle, is the President of our S.G.A. and a long time member. Don presides as Vice-President of our chapter and is very active in social events at school. Active students like Don make the school better for the students. Congratulations, Don.



SIGMA PHI DELTA NEWS

A correction to last week's report is in order. The new brothers who were initiated on January 20, 1968 were as follows: Ralph Mancuso, Don Nichols, Frank Hessel, Dennis Zemko, Woody VanWhy, Robert Schmidt, James Sheibinger, Jack Sherdel, Gary Kreitner, and Dave Getman.

On January 28, 10 men were accepted and initiated as pledges. They are as follows: Stuart Diggs, Dennis Holmes, James VanHorn, Edward Majewski, Duane O-vervaag, Charles Pittinger, Bruce Rozett, Michael Smith, James Tillotson, and Walter Donovan.

Some of the new pledges started collecting "black marks" right away, by making many mistakes. Oh well, they are only pledges and we can't expect too much from them. They can be observed around campus by the bar-ets that they must wear at all times outside of public buildings and we think they look very cute wearing them...

The brothers wish them the best of luck during their pledge period. From the results seen so far they are going to need it. Gary Richman, a brother who is a recent graduate of ERAI, is expected to spend the weekend at the frat house. We know that he will have something for the new pledges to do...

A trip to Busch Gardens (to enjoy the scenic beauty?) by the brothers and pledges is scheduled for February 10, 1968. This will give everyone a chance to relax from the hectic schedules and work around the frat house.

DERBY PLAZA O 255-4678

— AIRCRAFT RENTALS —

PIPER DEALER - USED AIRCRAFT - SUPPLIES

**VA
APPROVED**



FLY

**ERAI STUDENT DISCOUNT ON
AIRCRAFT PURCHASES
MUNICIPAL AIRPORT — 252-3344
DAYTONA BEACH AVIATION, INC.**

CORRECTIONS

(IS ER IN THE RED? - January 19, 1968)

There is an Associate Dean. Dr. Sain is now the newly appointed Associate Dean.

(EVALUATION TEAMS AT RID-DLE - January 26, 1968)

Dean Furlong, not Dr. McCormack, headed the evaluation team from Stetson.

USED FIAT PARTS SOLD
Lowest Prices in town....
Will not be undersold....

Try Us
Call: Tony 255-1237
Dorm #1 Rm. D-5

JOIN THE DAYTONA BEACH
JAYCEES—BE A PART OF
YOUR COMMUNITY. FOR
MORE INFORMATION CALL
252-0360.

- CAUTION -
RAY HUNT FORD IS MOVING
A '65 FAIRLANE
V8-AUTO- P.S.
WHITE- 2dr. H.T.
\$1495 REG. ~ \$1395 RIDDLE



"BUCK APPRECIATES YOUR BUSINESS"

BUCK'S GUN RACK

The area's most COMPLETE stock
of guns of all kinds



NEW and USED
★ GUNS ★
BOUGHT and SOLD

607 VOLUSIA AVENUE
DAYTONA BEACH, FLORIDA

PHONE: 252-8471

FOUNDED 1956

Embry Riddle

AERONAUTICAL INSTITUTE
BOX 2411 - DAYTONA BEACH, FLORIDA 32015

THE INFORMER

THE INFORMER is a weekly publication for Embry-Riddle students sponsored by the Student Government Association.

Articles may be submitted to the INFORMER for publication by the Administration, the Faculty and the Student Body. The INFORMER deadline is every Tuesday afternoon. Please mark all news items, "INFORMER" and deposit in the Mail Room, in the INFORMER box in the S.G.A. office or in one of the Suggestion boxes.

Editor - Linda Larsen
Sports - Jorge Sibila
Bernie Roke
Gene Mustin

Editorial - Ray Loehner
Business - Hal Jeppesen
Advisor - Bob Wigington

Staff: Bill Campbell, Gary Anderson, Richard Berezansky,
Tom Davis, Stephen Avery, Cam McQuaid, Tony Cavallari.