

7-26-1968

Informer Vol 5 Issue 5

Embry-Riddle Aeronautical Institute

Follow this and additional works at: <https://commons.erau.edu/informer>

Scholarly Commons Citation

Embry-Riddle Aeronautical Institute, "Informer Vol 5 Issue 5" (1968). *Informer*. 20.
<https://commons.erau.edu/informer/20>

This Book is brought to you for free and open access by the Newspapers at Scholarly Commons. It has been accepted for inclusion in Informer by an authorized administrator of Scholarly Commons. For more information, please contact commons@erau.edu.

The Informer

SPONSORED BY THE

Embry - Riddle

STUDENT GOVERNMENT ASSOCIATION

VOLUME V

JULY 26, 1968

NUMBER 5

CORNERSTONE LAYING AT ER

NEWS IN BRIEF

Embry-Riddle will have its cornerstone laying ceremonies at 3:00 p.m. Friday, August 9. The cornerstone will be laid of the new academic complex and the northeast wing of the new dormitory will be open to visitors.

After the ceremonies punch and cookies will be served in the new dormitory. Mr. William Piper of Piper Aircraft will be the guest speaker. Among those present will be Mr. Owen Eubanks, Mayor of Daytona Beach, President Jack Hunt, and the entire Board of Trustees and Board of Visitors. The Student Government Association will be taking an active part in all aspects of the ceremonies.

Students are welcome to attend all the activities and are urged to give the school their full support.

Immediately following the cornerstone laying ceremonies the Board of Trustees will meet. The tentative time is set for 4:30 p.m. President Hunt has given SGA President Cam McQuaid permission to attend, expressly for the purpose of presenting student views on the January tuition increase. If students have any pertinent ideas or suggestions concerning this matter, please contact Cam McQuaid before August 9 by dropping by the SGA office.

The chief architect building the new dormitory is pleased to see the students taking an active interest by visiting the complex. However, for insurance reasons he has requested that they do not enter the building unless permission has been granted by him or the foreman.

A 100% increase of ERAI coeds is expected in September. The current number of female students is five.

SGA BRIEFS

Jan Collins attended a meeting for the purpose of discussing methods used for preregistration.

On July 22 Bill Spruance attended a meeting with Mr. Hunt, Jay Adams (Board of Trustees executive), and Dean Spears for the purpose of setting up the cornerstone laying ceremonies and coordinating student participation.

The SGA has been working actively during the past month to draw up a constitution for an Embry-Riddle flight club, open to all ER students. One of the many possibilities being investigated is leasing an aircraft from the school, which would include maintenance, insurance, and gasoline benefits. Presently, the committee, headed by SGA rep Pat Louthen, is waiting for price quotations from Mr. Harry Ness.

Interested students are requested to contact Mr. Louthen through ER Box 473. We hope to have more news to report in the next issue of the INFORMER.

As a result of SGA committee action, the help of Mr. Pierce, Comptroller, and the individual efforts of SGA rep Richard Martucci, deferred payment costs will remain \$10 per trimester.

Jan Collins and Linda Larsen have been attending meetings along with members of the faculty and Dean Mansfield for the purpose of organizing a



THE SGA SERVICE AWARD, an award given each trimester to a student for outstanding service to Embry-Riddle, was presented to William (Bill) Crites (above) at the SGA barbecue on June 29. Bill, who graduated from AMM this June, served on the SGA both as a member and as treasurer, and has worked diligently throughout his stay at ER for the students and Institute. Don Nichols, SGA Vice-President, presented the trophy.

school policy on the problem of cheating and plagiarism.

Thanks go to Terry Miner, Chairman of the Lyceum Committee for his work in organizing the Arts and Crafts Exhibit in the Student Center, and to Roger McDade, Chairman of the Social Functions Committee, for his work concerning the SGA dance on July 27.

HAPPINESS IS.....

...the dorm on Nova Road loaded with Riddle Co-Eds

SPEAKING OUT

The opinions expressed in this paper are not necessarily those of the Institute or all members of the student body.



the president's corner

Opportunities for student participation in administrative activities are opening rapidly. The basic goals are improvement of all school functions.

Presently the SGA is able to work more closely with administrators through the efforts of your elected representatives. As has been witnessed in many news articles this trimester, SGA representatives have been included in decision and policy making efforts of the administration.

The administration is inviting our participation at every turn, and it is up to us, as students, to keep up the good work. "Student Power" is a reality at ERAI, only through your participation.

Sincerely,

Cam Mondschein
President Pro Tem

A LETTER FROM MR. MONDSHEIN

To: The Student Body

Thru: The Informer

From: Burt C. Mondschein
Business Manager &
Treasurer

Subject: Tuition Increase

Dear Students:

Several aspects of the subject situation and the attendant publicity cause me concern and have prompted my writing this letter to your editor.

First of all, as a former faculty member who has never really left the faculty, in spirit or in mind, I am concerned about the

apparent tendency of students to arrive at conclusions without having all of the facts. This practice, if continued on the job, after graduation, could be costly, or dangerous, or even fatal. May I suggest that in this and future controversies, you use your S.G.A. as the means to obtain all the facts, and your INFORMER as the means to disseminate all the facts. You should draw your own conclusions which may or may not be the same as those of your fellow student(s) or of your representatives. That is your right. You may then act based upon the conclusion you draw. That is your privilege. The consequences of your action are your responsibility.

Secondly, I wish to take this opportunity to take exception to the Dissatisfied Customer (Name Withheld) who implied that the Administration is not sincerely interested in the students. My office has always been open to you and your representatives; so has that of President Hunt. Perhaps if those "Name Withhelds" would come forward and discuss all sides of the issue with us, they would become INFORMED.

Thirdly, some of the facts:

(a) The City of Daytona Beach has increased the rent on the Academic Building from \$500.00 per month to \$1,170.00 per month, an increase of 133%; they have increased the rent on the Administration Building from \$60.00 per month to \$171.50, an increase of 186%. The Flight Hangar, which was brought from Miami and sold to Daytona Beach Aviation for prepaid rent, until May of this year, is now under lease at \$500.00 per month.

(b) The new Academic Buildings currently under construction are a joint project with the Department of Health, Education, and Welfare. Their participation includes a \$424,942 Grant and a \$549,000 Loan to be paid at principal plus 3% interest over forty (40) years. These payments will begin in January and will amount to approximately \$2,000.00 per month.

The Embry-Riddle portion of the project amounts to about \$325,000.00. This was to be raised by donations to the Building Fund. To date some \$54,000.00 is in the Fund from donations. The Institute will probably have to borrow \$250,000.00 to complete the project; the payments, at 7% interest for fifteen years, will be approximately \$2,250.00 per month.

(c) In June of this year, members of the community loaned the Institute \$200,000.00 in order that we might pay long overdue debts, continue our programs, and remain solvent. The payments on these notes are \$5,100.00 per month.

Finally, the salvation:

The pious Name Withheld ("May God Save Embry-Riddle") is perfectly justified in his question with respect to obtaining grants--though I believe he really means gifts. The Administration has recognized this need for some time but has been unable to afford it. We have budgeted approximately \$46,600.00 for the year starting in September to establish and operate a Development Office, staffed by a Professional. These efforts do not usually bear fruit until their second year of operation. Thus, it will probably be two years before

(continued on Page 3.)

CONTINUED FROM PAGE 2.

we can raise funds of our own to continue our building program at a cost which is not dependant upon student tuitions and fees. We can no longer afford not to begin this effort.

To those of you who have had the patience to read this through, I thank you for your time and attention and pledge to you my continued efforts to work toward a financially sound and effectively operated Institution. Without these ingredients, there would be no Embry-Riddle.

SINCERELY,

Burt Mondschein

The following letter was recieved by Linda Larsen, INFORMER Editor, in response to articles appearing the recent issues concerning the tuition increase.

Dear Linda:

This letter is long overdue. You and your staff are to be congratulated on the fine job you have done on THE INFORMER. All of us at Embry-Riddle are indebted to you for giving of your time and talents to keep us informed and interested.

The July 12, 1968, edition of THE INFORMER contained some very interesting and pertinent comments about the tuition problem that is so important to everyone. The letter from the SGA to the members of the Board of Trustees was well written, informative, and of good taste, I am convinced that it will play an important part in the deliberations of the Board at the next meeting, which is scheduled for Friday, August 9, 1968.

Some of the letters from the Suggestion Boxes concerned me, though. The concern was not over the subject matter nor valid points mentioned, but rather the apparent lack of research evidenced by certain statements. (I would hope that our students are

learning the worth of proper research.) Mr. Frank Forrest has been personally responsible for the demanding paperwork that has produced some \$3 million in grants and loans during the past 3 years. Your administration, faculty, Board members and friends of the college have been instrumental in developing liaison with industry and individuals. This is a slow and deliberate process which is just now beginning to show fruition. We welcome and will appreciate suggestions, names of individuals, names of corporations, grants, donations, or personal involvement by students, staff, faculty, and friends. Students are urged to apprise family and friends of the needs of the college and the personal benefits to be derived from a grant to a donation.

The Administration, in response to the request made by the SGA, is reviewing the budget structure in an effort to determine whether or not certain economies can be effected to allow a postponement of the projected rise in academic tuition. Findings will be presented to the Financial Advisory Committee of the Board of Trustees for its recommendation to the Board of Trustees.

You can help to keep the Board Members better informed about the college by including them on your mailing list.

Keep up the good work.

Sincerely,

Jack R. Hunt

Dear Mr. Hunt,

Your letter is more than just an expression of thanks; it is also the beginning of the thing that myself and the members of the INFORMER staff have been working for this trimester and in the past. That is the liaison between the Administration and the student body.

I am sure that I speak for the staff members and for the rest of the student body when I say that we do not want a "war", so to speak, between the students and the Administration, nor do we want to be ignored when we feel that there is need to speak out against something such as the tuition increase. We are also willing to listen to the other side and to accept decisions made by the Administration if they are justified to us.

The best wars are not won or lost, but ended by compromise and mutually accepted by enemies become friends. Let us hope that in the future any conflicts can be settled this way. If so, our efforts and yours have been worthwhile.

Thank you for your support concerning the tuition increase. I am sure that we may continue to rely on your help when the matter of postponing the increase is brought before the Board of Trustees.

Sincerely,

Linda Larsen, Editor

? SID'S PLACE ?

BUFFET

LUNCHEON
DINNER

SECONDS FREE

1436 VOLUSIA AVENUE

RESTAURANT

CHAR-BROIL

STRIP STEAK

WITH ALL THE TRIMMINGS

252-7373

MEAL TICKETS AVAILABLE

WIDE VARIETY

OF
SANDWICHES
KOSHER STYLE
or
AMERICAN

Call Your Order In Ahead

EAT IN OR TAKE OUT



sports

TRACK SIDE

DAYTONA BEACH, FLA.....

Four Daytona Beach area drivers are included among the early entries for the annual SCCA Paul Whiteman Trophy races scheduled for the 3.1 mile track-road course at Daytona International Speedway for Saturday and Sunday, August 3 and 4, Regional Executive Harra Zitza announced.

These include two restaurant operators, Guido and Mario Levette, who have entered as co-drivers for an Elva Courier; Ara Dube, who will be driving a Beech Formula Vee, and Donald Cummings, who is scheduled to drive a Shelby GT 350.

Four one-hour races are scheduled for Saturday with the first for A-B-C Formula cars at 1 p.m., followed by the Formula Vees at 2:15 p.m., then the F-G-H production, C-D sedans and D sports racing cars at 3:30 and the A-B-C -D-E production, A-B sedans and A-B-C sports racing entries at 4:45 p.m.

Sunday's schedule lists four 30-minute races for these same groups with the first starting at 1:15 p.m., climaxed with a one-hour Paul Whiteman feature for the third and fourth race groups starting at 4:15 p.m.

INTERCOLLEGIATE BASEBALL?

We have received bids from Florida Institute of Technology to play baseball on a home and home series, as well as Stetson University. We have also received information from Stetson University indicating a willingness to participate in all sports. The golf team will certainly compete in the Florida intercollegiate, as well as some dual matches in the next academic year.

Mr. Dewey is concentrating all of his intercollegiate on tennis only and promises a schedule for the Spring of 69'.

It is to be hoped that as of September 1, an Intramural Athletic Director will be on board and functioning. Of course we expect that the flag football season will be a vigorous competition as of yesteryear. Hopefully there will be an intramural club in volleyball, which might even extend to faculty participation.

DEAN MANSFIELD

RIDDLE EDGES RAMS 4-3

Embry-Riddle's Baseball team beat the DeLand Rams by a score of 4 to 3 in an evening game played on July 6th at Conrad Field in DeLand.

JOHN FLEWELLEN pitched the entire game for Riddle. Riddle scored all their runs in the sixth inning. JOHN REEVES scored the winning run when ED ANDRIES bunted on a suicide squeeze play.

HAPPINESS IS.....

...all this rain shrinking the mini skirts even more

...the speed of Riddle's new planes matching the speed of tuition increases

BUCK'S GUN RACK

The area's most COMPLETE stock
of guns of all kinds

NEW and USED

GUNS

BOUGHT and SOLD

607 VOLUSIA AVENUE
DAYTONA BEACH, FLORIDA

PHONE: 252-8471

Soccer Schedule

Opponent

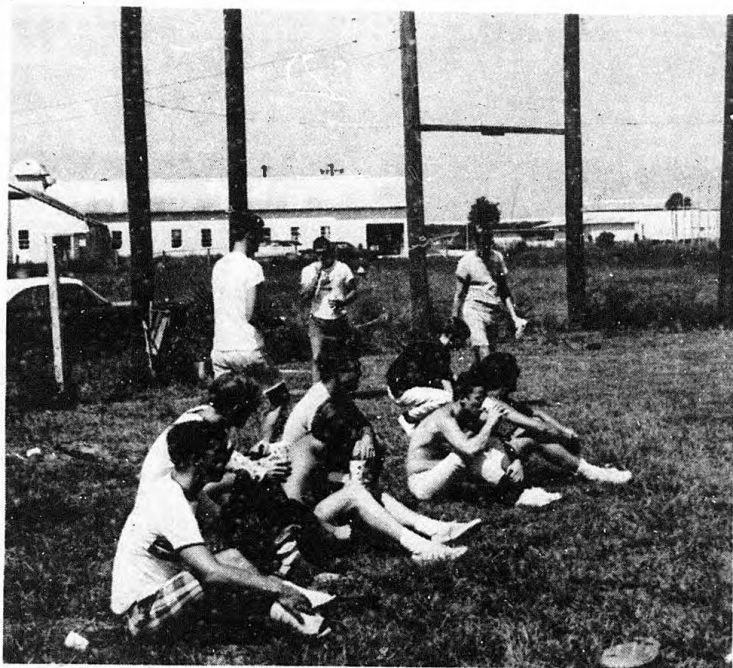
Place

<u>Date</u>	<u>Opponent</u>	<u>Place</u>
September 15	Cocoa Soccer Club	Melbourne
September 28	Georgia Tech	Atlanta
October 5	University of Florida	Gainesville
October 9	Stetson University	DeLand
October 12	St. Leo College	Here
October 19	University of Florida	Here
October 26	Florida State University	Here
October 30	Stetson University	Here
November 9	St. Leo College	St. Leo
November 15	University of South Florida	Tampa
November 16	Miami-Dade	Here
November 23	Florida State University	Tallahassee
December 7	Georgia Tech	Here

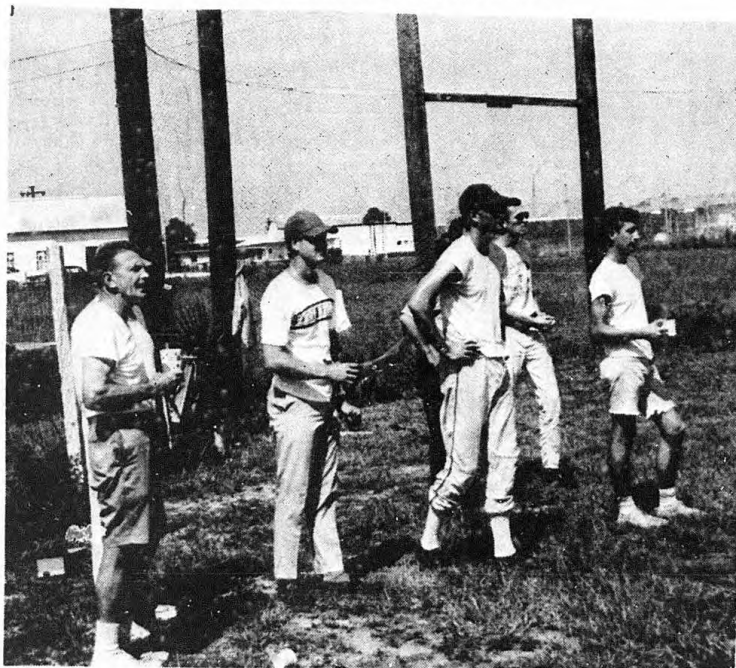
sports cont.

FACULTY gets their socks blown off by students

BEER AND BASEBALL MAKE FOR AN ENJOYABLE MORNING
FOR STUDENTS AND ERAI FACULTY



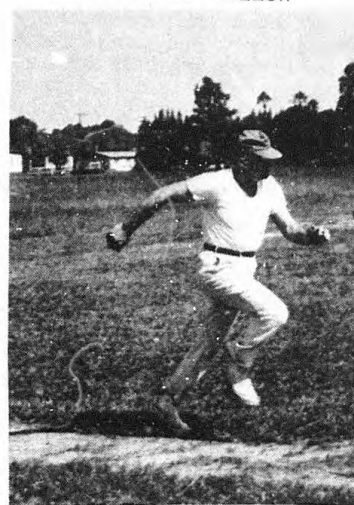
GOOD GUYS.....



I'LL DRINK TO THAT.....



FLEET FOOTED FELLOW



I'LL GET THE GUY WITH
THE BEARD YET!



INSPIRATION

Greeks ΣΦΔ ΑΗΡ ΠΣΦ

SIGMA PHI DELTA

BY DON NICHOLS

The past weekend was highlighted by a Bar-B-Que for the Brothers, Pledges, and their guests. Everyone ate and drank heartily. This was followed by a party with refreshments, which was constituted by approximately 65 people. The school band provided the entertainment.

On Sunday a professional meeting was held and films furnished by Sikorsky Aircraft Corporation on the development of helicopters were shown.

The pledges have "Hell Night" coming. We know they are looking forward to it with great anticipation; especially with a visit from that "grand old lady" of Sigma Phi Delta, "Granny."

FOR SALE or TRADE

300 cc. Mustang Cycle 4-speed trans.

2 Extra Engines

2 Extra 3-speed transmissions

1 Extra frame and wheels

-Assorted Parts-

Will sell for \$125.00.
See Gil M. Gauthier, Apt.
F-5 (New Dorm)

PI SIGMA PHI

BY FRANK ALEXANDER

The Brothers of Pi Sigma Phi proudly announce that we will be operating Embry-Riddle's first used bookstore, to open at the beginning of next trimester. The used bookstore is designed to help both students who want to sell their books and those who wish to purchase second hand books. Anyone wishing to sell a book should bring it to one of our Brothers, who will make out a card with the seller's name, address, and the price he is asking for the book. We will put all books on display for anyone wishing to buy them. When the sale has been made, we will notify the seller and give him the money. In the event that

the book is not sold, we return it to the seller.

The used bookstore is designed to act as a clearing house for students who want to sell and those who want to buy. Watch this column for more information in the near future.

Birthday greetings go out to Brother Larry Grondski, who turned 21. John Cook is next on the B-Day list.

As September approaches I would like to remind you that we will be holding our second pledge class. Anyone who is interested in becoming a pledge should contact one of our brothers for necessary information.



PHONE
253-4265

Donnell's Pizza

800 LEWIS DRIVE
(JUST OFF MASON)

TABLE SERVICE OR CARRY OUT ORDERS

AIRCRAFT RENTALS

PIPER DEALER - USED AIRCRAFT - SUPPLIES

VA
APPROVED



FLY
NOW

ERA1 STUDENT DISCOUNT ON
AIRCRAFT PURCHASES

MUNICIPAL AIRPORT — 252-3344


DAYTONA BEACH AVIATION, INC.

AMERICAN CONTRIBUTES TO BUILDING FUND

American Airlines this week presented Embry-Riddle Aeronautical Institute of Daytona Beach with a \$500 check for the college's Permanent Campus Building Fund.

Embry-Riddle President, Jack R. Hunt, accepted the check from American Airlines representative Harold Fleming, Supt. of Maintenance, and Edward Dennis, Employment Representative.

The local and national drive for Embry-Riddle's building fund re-intensified earlier this year when construction began on the college's Academic Complex, followed soon by the second of three dormitory wings in the scheduled 10-year Building Program.



**IF YOUR PIZZA IS
PERFECTION
IT'S FROM
SHAKY'S
PIZZA PARLOR
and Ye Public House**

Bot. 15th & 16th Sts.
on No. Ridgewood,
Holly Hill (May. 1)
672-1682
PHONE YOUR CATERING ORDER...

HAPPINESS IS.....

...engineering students designing the DC-3 for jet engines

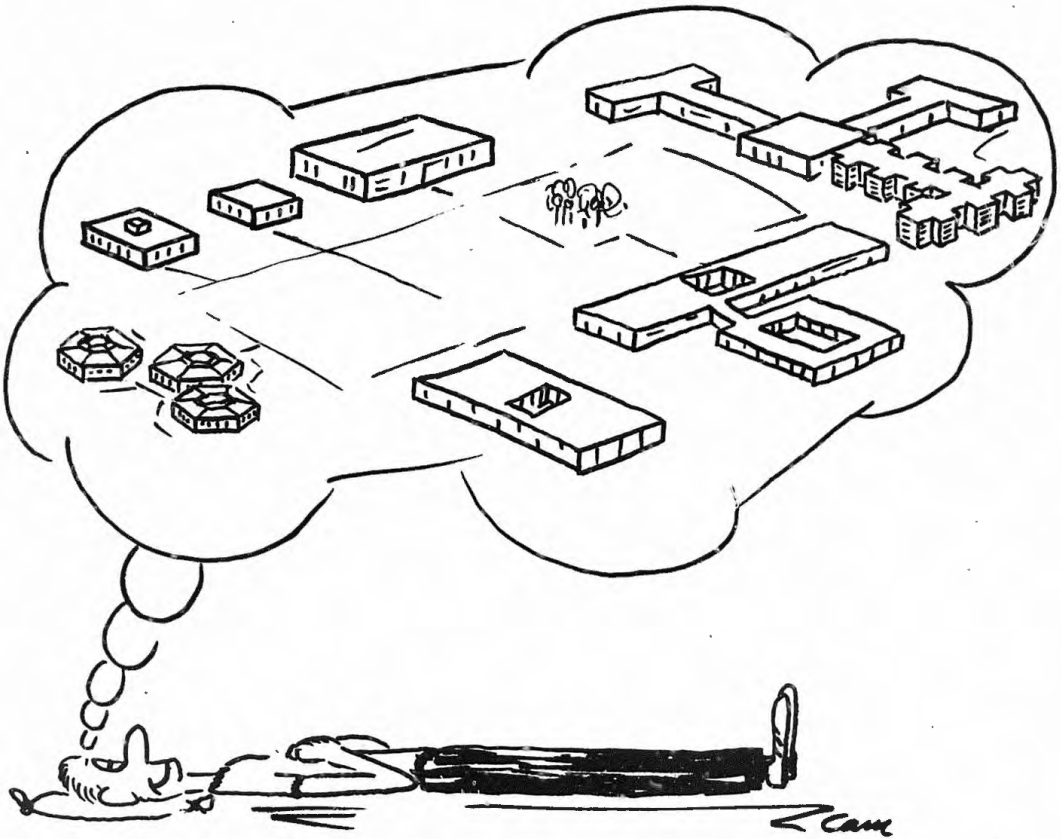
...converting the DC-3 to jet

...Embry-Riddle having a jet gooney bird

...the editor of the Informer with her own cigarettes

...Riddle grads testing the C-5A

...just one week of finding out why they call Fla. the Sunshine State



DREAMS START COMING TRUE AUGUST 9, 3:00 P.M. AT THE NEW ACADEMIC COMPLEX. SEE YOU ALL THERE.

"THE UNIVERSITY OF THE AIR"



THE INFORMER

THE INFORMER is a biweekly publication for Embry-Riddle students sponsored by the Student Government Association.

Articles may be submitted to the INFORMER for publication by the Administration, the Faculty, and the Student Body. The INFORMER deadline is every other Tuesday afternoon. Please mark all items, "INFORMER" and deposit in the Mail Room, in the INFORMER box in the S.G.A. office, or in one of the Suggestion Boxes.

Editor - Linda Larsen
Business - Bill Campbell
Sports - Jan Collins, Paul Peterson
Advisor - Mr. Roger Campbell

Staff: Don Nichols, Cam McQuaid, Frank Alexander, Jackie Wimpy, Tom Dodson, Warren Richardson, R. Stolzenberg, Bernie Roke, Terry Miner.