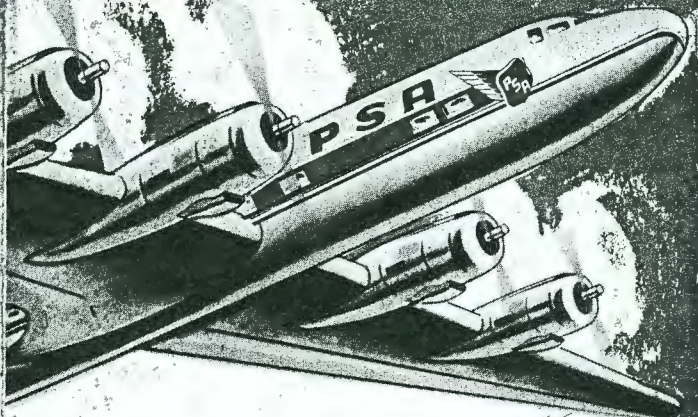




DATE \_\_\_\_\_

# PSA

## A SCHEDULED AIRLINE



2  
3  
4  
5  
6  
7  
8  
9  
10  
11  
12

Ask your  
Stewardess  
We'll Mail  
it for you



### Pacific Southwest Airlines

A DIVISION OF FRIEDKIN AERONAUTICS

CALIFORNIA'S MOST EXPERIENCED  
INTRA-STATE AIRLINE

## Welcome Aboard

On behalf of the PSA organization, I am pleased to welcome you aboard. Our trained personnel will do their utmost to make your trip comfortable and relaxing. In this folder we have endeavored to tell you about the people of PSA, our service, our equipment and points of interest along the route. We are pleased and appreciative that you have chosen PSA and sincerely hope that you will have a most enjoyable flight.



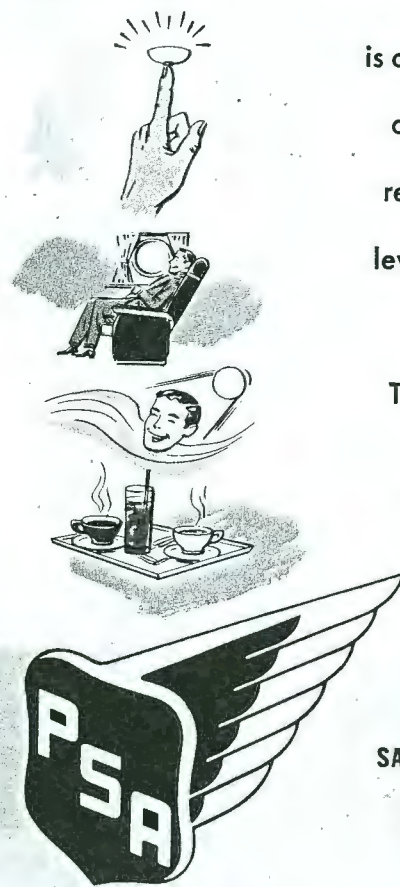
*Kenneth G. Friedkin* PRESIDENT  
PACIFIC SOUTHWEST AIRLINES

## It's Fun to Fly

And here are a few tips for your trip.

**Push-button Service . . .** Your friendly PSA stewardess is on board to serve you, add to your comfort and answer your questions. Don't hesitate to ring for her any time. A touch of the call button brings her to your side. Relax . . . in your comfortable foam cushioned reclining lounge chair. Merely press the lever on the arm rest, lean back to the desired position and release the lever. Seats are scientifically spaced to provide ample leg room. Cool Air and Reading Light . . . Adjustable fresh air outlet and reading light are conveniently located just over your head.

**Thirsty? . . .** Your stewardess will be happy to bring you tea, coffee or fruit punch . . . compliments of PSA. **Smoking . . .** You may smoke cigarettes except when your Skyliner is on the ground or the "No Smoking" sign is on. Ash trays are located on the arm of your chair.



## SALES OFFICES

SAN FRANCISCO

277 Post St.  
Plaza 6-3600  
JUno 3-0931

LOS ANGELES

Lockheed Air Terminal  
632 South Hill St.  
Stanley 7-5437

SAN DIEGO

Lindbergh Field  
CYpress 5-2105

or See Your Local Travel Agent



# PSA Trip Map



And the Clouds Float By . . . Between San Francisco and Los Angeles our flying time is a brief hour and forty minutes . . .

Between Los Angeles and San Diego, a fast forty minutes. PSA is the only carrier offering no-stop service between San Francisco and San Diego. Refreshments are yours for the asking and the large windows overlook some of California's most breathtaking scenery. PSA takes you along the most direct route and over the state's three major cities—a spectacular and thrilling sight to any air traveler.



Maintenance . . . PSA is one of the few air carriers which operates its own large maintenance base, servicing not only PSA Skyliners, but the aircraft of other companies as well. Maintenance, inspection and overhaul requirements exceed the stringent standards set by the Civil Aeronautics Administration for commercial airlines. After a specified number of flying hours every airplane and every accessory in it is painstakingly inspected.

Living Room on Wings . . . Tastefully

Pacific Ocean  
20 min.



10 min. 10 min.



20 min. 2 hr.

30 min. 50 min.

40 min. 40 min.

50 min. 30 min.

1 hr. 20 min.

10 min. 10 min.







Living Room on Wings . . . Tastefully decorated in soft colors, the interiors of the PSA Skyliners are relaxing from the moment you sink into the foam cushioned reclining lounge chairs. There is plenty of light and fresh air and note that there is ample leg room for all passengers even with the seats in a fully reclined position.



SAFETY • COMFORT • DEPENDABILITY

**4 Engine Service on ALL Flights and the Lowest Fares in the West**

SAN FRANCISCO SAN DIEGO	<b>15<sup>44</sup></b>	SAN FRANCISCO LOS ANGELES	<b>9<sup>99</sup></b>	LOS ANGELES SAN DIEGO	<b>5<sup>45</sup></b>
----------------------------	------------------------	------------------------------	-----------------------	--------------------------	-----------------------

*all fares plus tax*

**Pacific Southwest Airlines** A DIVISION OF FRIEDKIN AERONAUTICS

10 min. 10 min.

20 min. 1 hr.

30 min. 50 min.

40 min. 40 min.

50 min. 30 min.

2 hr. 20 min.

10 min. 10 min.

20 min.



SANTA BARBARA



HOLLYWOOD  
BURBANK  
LOS ANGELES



LONG BEACH

SANTA CATALINA IS.



LAGUI BEAC

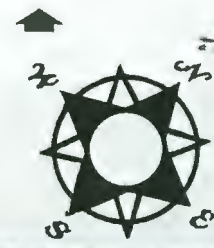
OCEANS



DEL MAR  
SAN DIEGO



TIAJUANA



*"The World's Friend"*



# PSA Trip Map



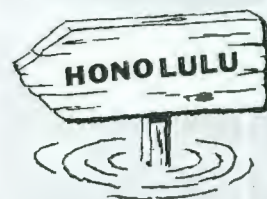
Pacific Ocean

20 min.



SAN FRANCISCO

10 min. 10 min.



HONOLULU



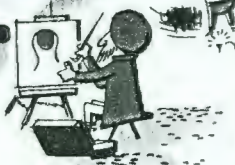
SAN JOSE

20 min. 2 hr.

MONTEREY

CARMEL

30 min. 50 min.



40 min. 40 min.



COALINGA

50 min. 30 min.

SAN LUIS OBISPO

1 hr 20 min.

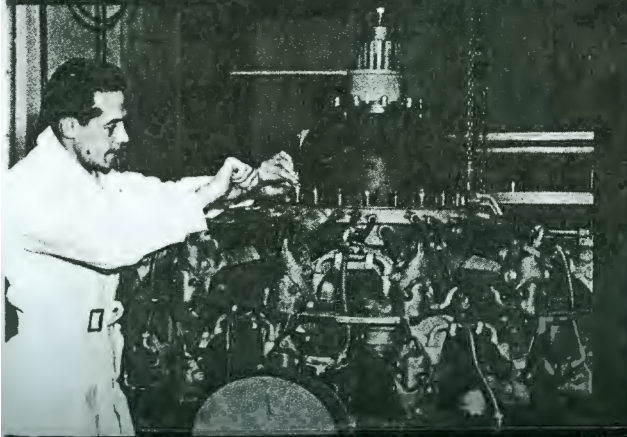


And the Clouds Float By . . . Between San Francisco and Los Angeles our flying time is a brief hour and forty minutes . . .

Between Los Angeles and San Diego, a fast forty minutes. PSA is the only carrier offering no-stop service between San Francisco and San Diego. Refreshments are yours for the asking and the large windows overlook some of California's most breathtaking scenery. PSA takes you along the most direct route and over the state's three major cities—a spectacular and thrilling sight to any air traveler.



**Maintenance . . .** PSA is one of the few air carriers which operates its own large maintenance base, servicing not only PSA Skyliners, but the aircraft of other companies as well. Maintenance, inspection and overhaul requirements exceed the stringent standards set by the Civil Aeronautics Administration for commercial airlines. After a specified number of flying hours every airplane and every accessory in it is painstakingly inspected.



Living Room on Wings . . . Tastefully decorated in soft colors, the







Living Room on Wings . . . Tastefully decorated in soft colors, the interiors of the PSA Skyliners are relaxing from the moment you sink into the foam cushioned reclining lounge chairs. There is plenty of light and fresh air and note that there is ample leg room for all passengers even with the seats in a fully reclined position.



SAFETY • COMFORT • DEPENDABILITY

**4 Engine Service on ALL Flights and the Lowest Fares in the West**

SAN FRANCISCO  
SAN DIEGO **15<sup>44</sup>**

SAN FRANCISCO  
LOS ANGELES **9<sup>99</sup>**

LOS ANGELES  
SAN DIEGO **5<sup>45</sup>**

*all fares plus tax*

**Pacific Southwest Airlines** A DIVISION OF FRIEDKIN AERONAUTICS

10 min. 10 min.

20 min. 1 hr.

30 min. 50 min.

40 min. 40 min.

50 min. 30 min.

2 hr. 20 min.

10 min. 10 min.

20 min.



SANTA BARBARA



HOLLYWOOD  
BURBANK  
LOS ANGELES



LONG BEACH

SANTA CATALINA IS.

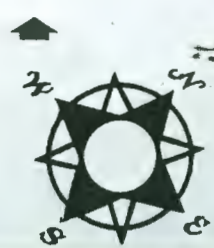


LAGUNA BEACH



OCEANOGRAPHY

DEL MAR  
SAN DIEGO



TIAJUANA

*"The World's Friend"*