

Fall 11-18-2016

## Learning: It's Personal

Angela Atwell

*Embry-Riddle Aeronautical University, atwella2@erau.edu*

Follow this and additional works at: <https://commons.erau.edu/publication>



Part of the [Curriculum and Instruction Commons](#), [Educational Methods Commons](#), [Educational Psychology Commons](#), [Online and Distance Education Commons](#), [Other Teacher Education and Professional Development Commons](#), and the [Scholarship of Teaching and Learning Commons](#)

---

### Scholarly Commons Citation

Atwell, A. (2016). Learning: It's Personal. , (). Retrieved from <https://commons.erau.edu/publication/341>

This Presentation without Video is brought to you for free and open access by Scholarly Commons. It has been accepted for inclusion in Publications by an authorized administrator of Scholarly Commons. For more information, please contact [commons@erau.edu](mailto:commons@erau.edu).



# OLC Accelerate

*ACCELERATING ONLINE LEARNING **WORLDWIDE***

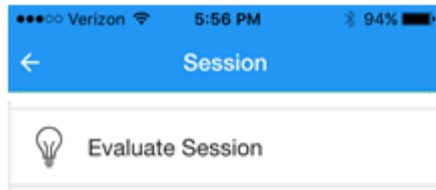


ONLINE LEARNING™  
CONSORTIUM

#OLCACCELERATE • NOVEMBER 16-18, 2016

WALT DISNEY WORLD SWAN & DOLPHIN RESORT • ORLANDO, FL

# Session Evaluations Contest



- **Download and open OLC Conferences mobile app**
- **Navigate to specific session to evaluate**
- **Click “Evaluate Session” at the bottom of session details screen**
- **Complete session evaluation\***

Each session evaluation completed (limited to one per session) = one contest entry

Five (5) \$25 gift cards will be awarded to five (5) individuals

Must submit evals using the OLC Conferences mobile app or website

(As part of our "green" initiatives, OLC is no longer using paper forms for session evaluations.)

*\*Contact information required for contest entry but will not be shared with the presenters.  
Winners will be contacted post-conference.*



**OLC Accelerate**  
ACCELERATING ONLINE LEARNING WORLDWIDE

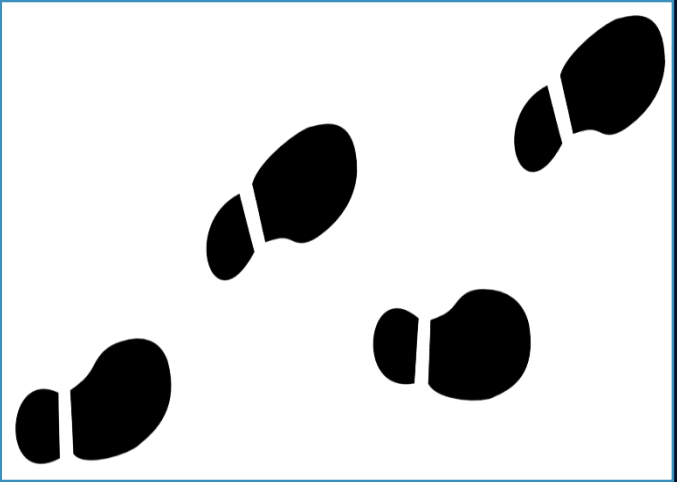
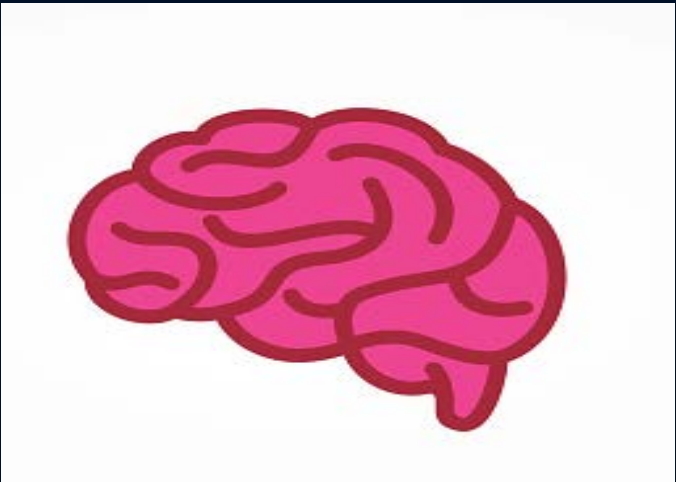
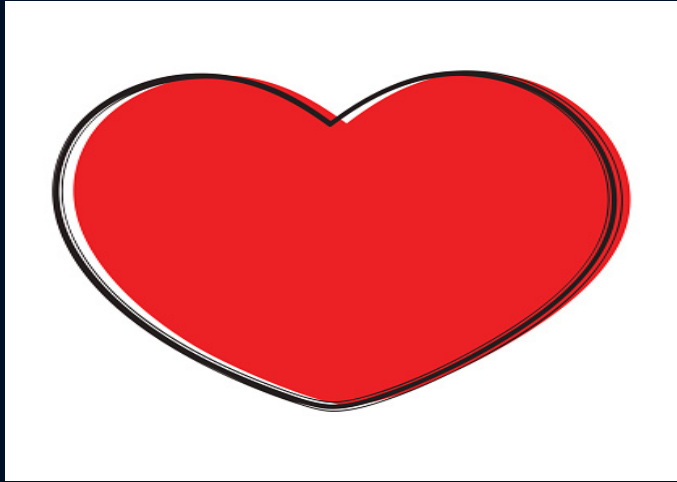
#OLCAccelerate

# Learning: It's Personal

ANGELA ATWELL, FACULTY DEVELOPMENT INSTRUCTOR  
EMBRY-RIDDLE AERONAUTICAL UNIVERSITY - WORLDWIDE







# Effective Teachers Leave Their Mark



## Goals -

- For students to remember (retention) and apply (transfer) the concept after they leave the class
- To make an impact
- Must be meaningful and memorable



A Venn diagram with two overlapping circles. The left circle is labeled 'Community' and contains three bullet points: '\*Diversity', '\*Belonging', and '\*Presence'. The right circle is labeled 'Content' and contains three bullet points: '\*Context', '\*Personalize', and '\*Applicability'. The intersection of the two circles is shaded in a lighter blue color.

# Community

- \*Diversity
- \*Belonging
- \*Presence

# Content

- \*Context
- \*Personalize
- \*Applicability



*Ecology. an assemblage of  
interacting populations occupying  
a given area*

# Community

DICTIONARY.COM

# Diverse Learning Communities

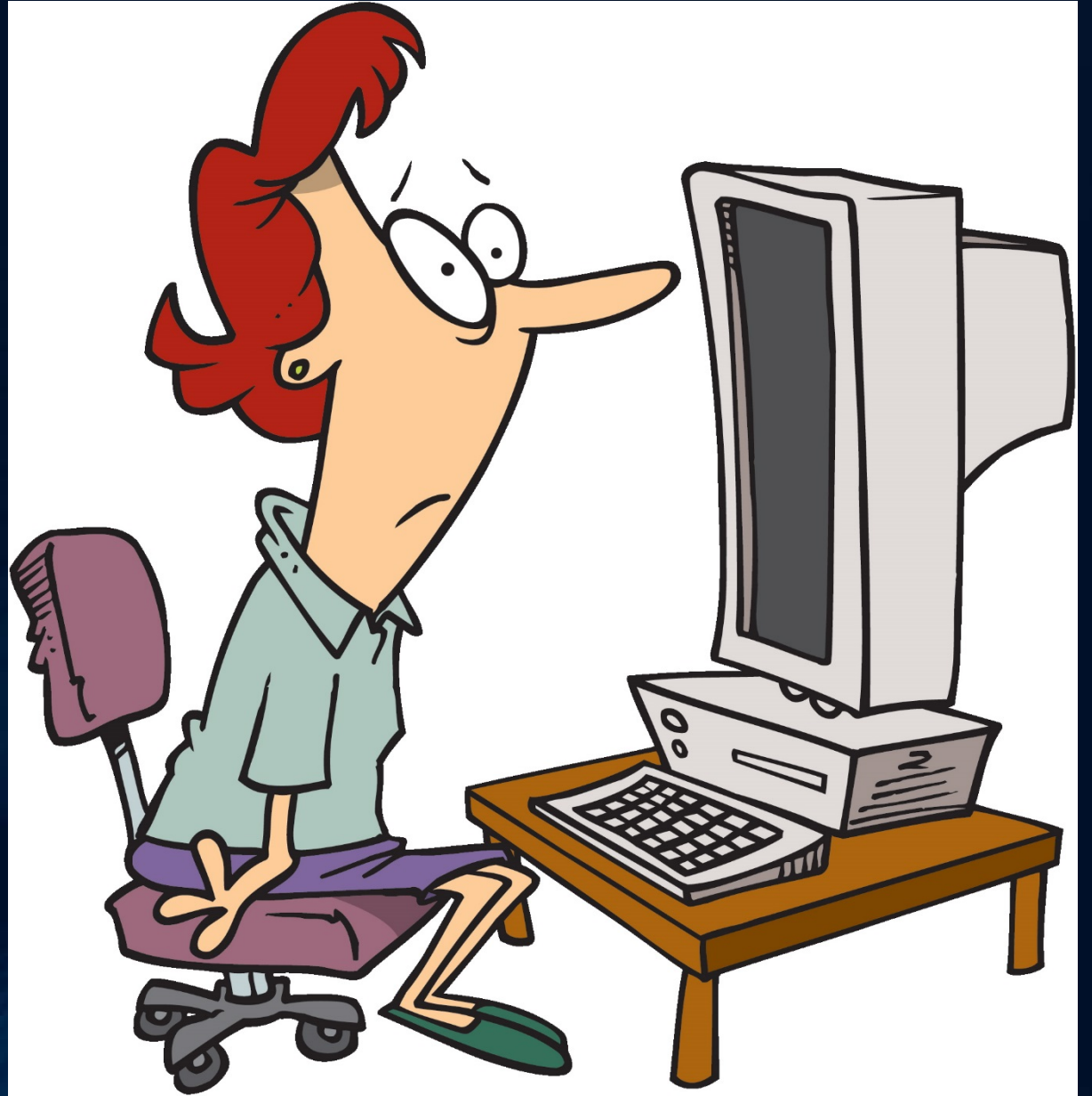
## ○ Geography

- Add to my ZeeMap using the menu items at: <http://j.mp/2espjGY>
- Additions – Add Marker - Simple

## ○ Online Learners

## ○ Experience (Context)

Students  
report feeling  
lost and  
confused in an  
online learning  
environment.



# 1<sup>st</sup> Day of Class

## Video Introductions

- Where are you from / Where do you live?
- Primary Language (name pronunciation)
- Occupation
- Goals for this course

## Video Welcome Announcement

- Build Credibility
- Showcase Enthusiasm
- Outline Policies
- Describe Major Projects

# 1<sup>st</sup> Day of Class

- Faculty Profile
- Online Office
  - Time Zone
  - Learning Styles Discussion
- Virtual Classroom Welcome
  - Music, Game, Chatting
- FAQ

## Read About Your Course Facilitator



**Instructor Name & Rank:** Angela (Angie) Atwell

**Contact Information:** [angela.atwell@erau.edu](mailto:angela.atwell@erau.edu) (386) 226-6767

**Office Hours:** Monday - Friday 7:30 AM to 4:30 PM ET

### Instructor Bio:

Hello and welcome to this FACD course.

My name is Angela (Angie) Atwell and I will be your facilitator for this course.

I have dedicated my professional career to education and the education of others. I am passionate about professional development and believe it is the best way to improve student outcomes.

As a lifelong learner I am always excited to work with new ERAU-W faculty to learn new strategies and exchange ideas.

### Education:

Master's in Educational Leadership - *Florida State University*

Bachelor's Degree in Education, Health and Psychology

- *State University of New York (SUNY) College at Brockport*



# After the First Assignment

OVER 80%

Subject: Congratulations on a successful start to our course!

I didn't want your hard work to go unnoticed. You're doing a great job keeping up with the assignments and actively participating in the discussions.

Please do not hesitate to let me know if you have any questions or concerns. Remember, I am here to support you throughout the course.

BELOW 80%





# Mid-Term

- Motivation Wanes
- Sweet Spot – determine needs, time enough to rebound
- Right Support / Challenge at the Right Time
- Reminders about due dates

# Content

DICTIONARY.COM

*Philosophy, Logic.* the sum of the attributes or notions comprised in a given conception; the substance or matter of cognition.

# Make it Memorable

- Engage students to reduce multi-tasking
- Failure - usually a problem with encoding not retrieval
- On a penny, which direction is Lincoln facing?



# Customize and Personalize Learning

- Shift from teaching to learning
- Providing options that align with personal/professional goals
- Apply concepts within context
- Enhances meaning
- Escalates learner enthusiasm

# Connecting Content to Context

## CONTEXT

The circumstances that form the setting for an event, statement or idea, and in terms of which it can be fully understood and assessed

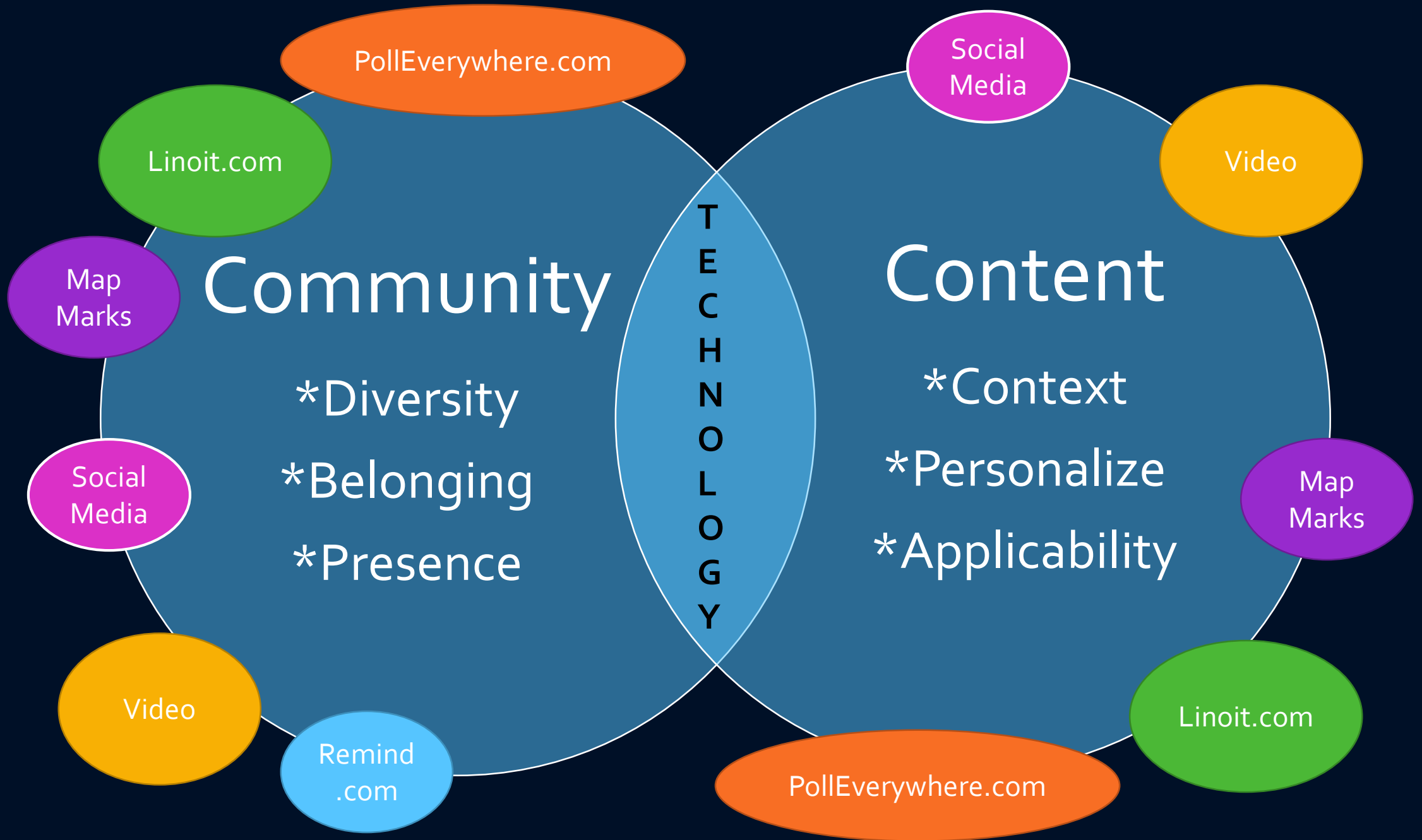
## CONTENT

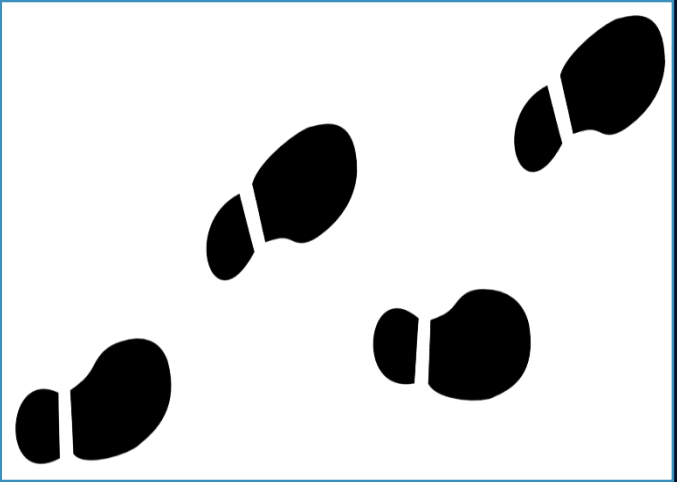
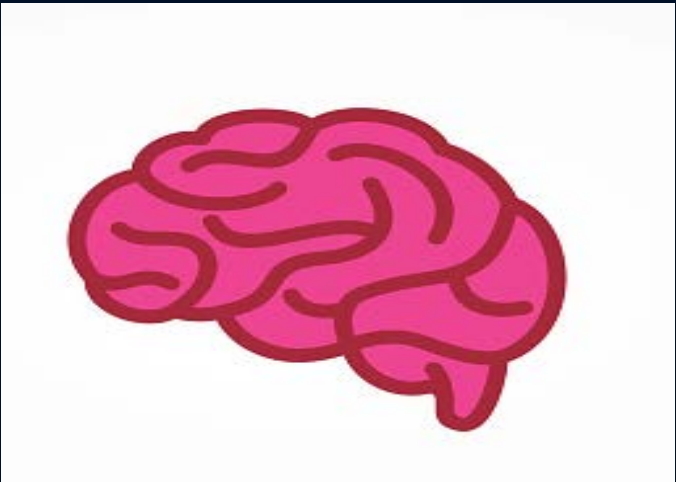
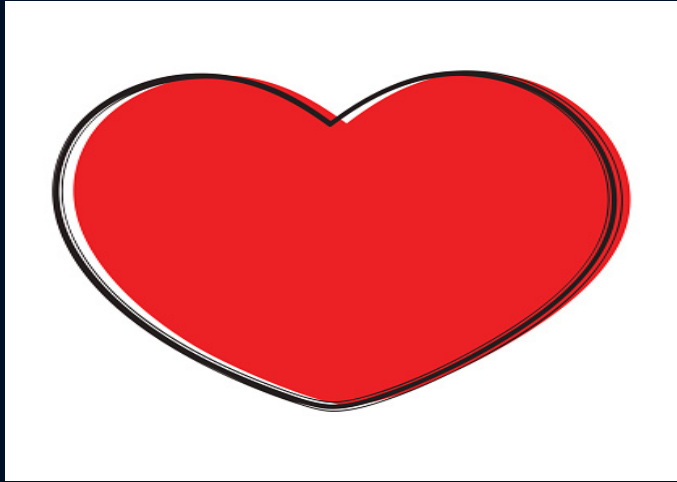
The sum of the attributes or notations comprised in a given conception; the substance or matter of cognition

<http://linoit.com/users/atwella2/canvases/OLC>

Judge Talk Create Write  
Analyze Explain Inquire  
Report









# References

Boettcher, J.V. and Conrad, R. (2016). The online teaching survival guide: Simple and practical pedagogical tips. San Francisco: Jossey-Bass.

Boling, E.C., Hough, M., Krinsky, H., Saleem, H., & Stevens, M. (2012). Cutting the distance in distance education: Perspectives on what promotes positive, online learning experiences. *Internet and Higher Education*, 15, 118-126.

Hardman, E. (2015). How pedagogy 2.0 can foster teacher preparation and community building in special education. *Social Inclusion*, 3, 42-55. doi 10.17645/si.v3i6415

Magna Publications (2016). A holistic approach to supporting students.. Retrieved from <http://cdn.magnapubs.com/pdfs/magna-free-report-holistic-approach.pdf>

Sternberg, R.J. & Sternberg, K. (2012). *Cognitive psychology (6<sup>th</sup> Ed.)*. Belmont, CA: Wadworth