

1-22-2008

Avion 2008-01-22

Embry-Riddle Aeronautical University

Follow this and additional works at: <https://commons.erau.edu/avion>

Scholarly Commons Citation

Embry-Riddle Aeronautical University, "Avion 2008-01-22" (2008). *Avion*. 649.
<https://commons.erau.edu/avion/649>

This Book is brought to you for free and open access by the Newspapers at Scholarly Commons. It has been accepted for inclusion in Avion by an authorized administrator of Scholarly Commons. For more information, please contact commons@erau.edu.

Acclaimed Civil War musician visits Embry-Riddle

Bob Schied

Chief Copy Editor

According to Bobby Horton, "history is just the story of real people," the most interesting story of them all, and last Wednesday, he gave a voice to the 19th century American in

front of a few dozen in the IC Auditorium.

In the premier event of the 2008 Arts and Letters series, Horton spent nearly two hours playing the music of the American 1850s and 1860s, sprinkled heavily with history and anecdotes of the times from the points of view of soldiers and civilians in both the north

and the south. He is an expert on the subject, having produced the soundtracks for nine (soon to be 10) Ken Burns PBS films about the Civil War and releasing a number of CDs of the music, complete with commentary.

After starting with energetic banjo playing and several verses of a song about "goober

peas," he began telling the origins of the piece, starting with when it first became popular in the country and continuing with the roots of the term "goober peas," from the Gullah words "goobah pintas," for peanuts. His research was incredibly thorough, and although the histories for his songs have not all survived time, he was still

able to inform and amuse the audience of a few dozen for the whole performance.

Throughout the performance, audience members were charmed with his intricate and effortless skill with instruments, words, and humor. He truly captured the essence of the lives of the men involved in that war, from stirring calls to arms to the reflections of survivors of

battles that cost tens of thousands their lives in a single day. After the performance, he spent several minutes conversing with audience members one-on-one, talking about instruments, songs, battles, battlefields and soldiers, ancestors of the people in the room; Horton himself has

Please see "HORTON," page A2

ERAU by the Numbers

\$1,100: The cost of one credit hour (Est. 2008-2009)

1,395: The number of Aerospace Engineering students (DB)

1,302: The number of Aeronautical Science students (DB)

318: The number of Air Traffic Management students (DB)

4,584: Total number of undergraduate students (DB)

\$98,677,503: Amount in loans students borrowed

48.2%: Total amount of tuition covered by loans

\$204,780,535: Total amount of financial aid recieved

60,805: Total aircraft flight hours (DB)

19,090: Total simulator hours (DB)

946: Faculty and staff (DB)

\$251,000,000: Total University Revenue

\$214,000,000: Amount of revenue from tuition

\$240,000,000: Total University Expenses

79%: First year retention rate (students starting Fall '06, DB)

61% Graduation rate after six years (students starting Fall '01, DB)

27%: Percent of new students from Florida (DB)

8%: Percent of new students from New York (DB)

6%: Percent of new students from Penn. and New Jersey each (DB)

85: Number of countries represented on campus

18%: Percent of International students from India

9%: Percent of International students from Korea

*Figures taken from Embry-Riddle's facts and figures page on www.erau.edu. All figures for the year 2007, unless otherwise stated. Financial figures for all Embry-Riddle campuses unless otherwise stated.



Basketball goes 9-2 over holiday break

Press Release

ERAU Sports Info.

MIAMI LAKES, Fla. – Just hours after moving up in the NAIA national poll from No. 5 to No. 3, the Embry-Riddle men's basketball team improved its Florida Sun Conference record to 3-0 with an 81-59 win over St. Thomas at Pace High School Wednesday. Junior Rocky Pierre led all scorers with a season-high 28 points in 29 minutes on the floor. He was 9-for-12 from the field and connected on a season-best seven three-pointers for the Eagles who are now 18-1 overall.

The Eagles got off to a slow start in the first half, as the Bobcats came out with more intensity and forced four Eagle turnovers in the first six minutes. Both teams traded baskets

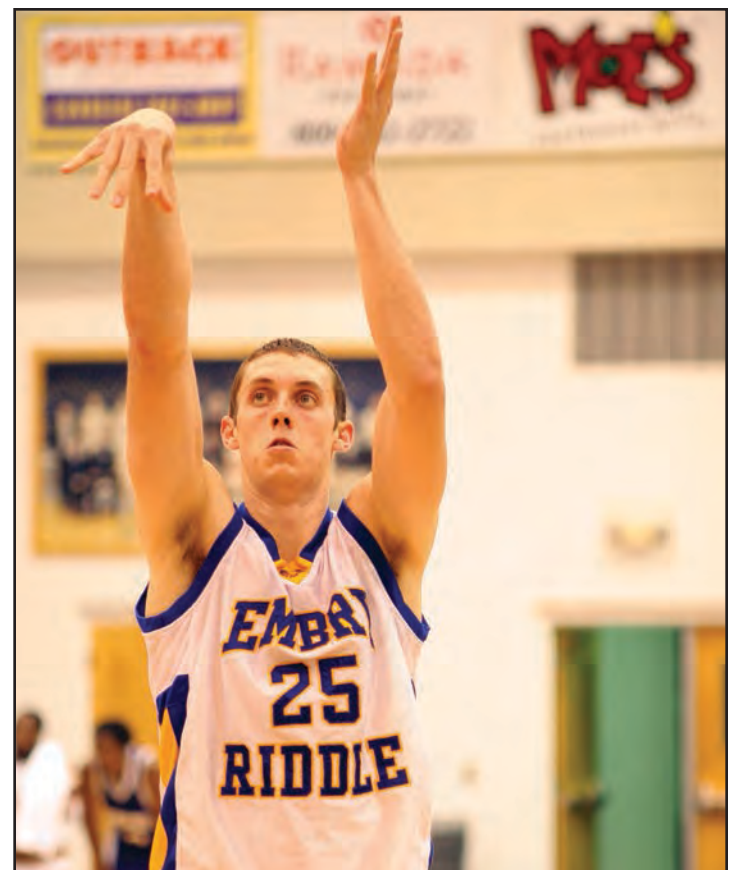
for much of the half and neither team led by more than four points in the first 14 minutes.

With 6:40 left in the half, Embry-Riddle head coach Steve Ridder called a time out to rally his troops. It appears that Ridder's 30-second speech had the desired effect, because the Eagles came out of the huddled and outscored the Bobcats 23-3 to take a 51-29 lead into the intermission.

St. Thomas matched the Eagles in scoring in the second half as both teams tallied 30 points each. But the Bobcats could not erase the damage done by the Eagles in the first frame. St. Thomas suffered its third straight conference loss and is now 6-10 on the year.

As a team, the Blue and Gold

Please see "BALL," page A3



TYLER DEBORD HAS BEEN been a rock in the paint for the Eagles this year. The big man is averaging 18 points game, 8.6 rebounds, and is shooting 69 percent from the field.

Electronics recycling drive coming Jan. 30

Peter Richardson

Entertainment Editor

On Jan. 30, Embry-Riddle will be hosting its first Electronics Waste recycling drive. Over the past few decades electronic waste has been growing in amount while its complexity to recycle has also increased. Due to the potentially toxic nature of most electronic waste it is obviously not allowed to be recycled with regular methods while it is also illegal in many countries worldwide to place electronic waste in landfills.

The United States, on the other hand, has no national electronic waste initiative, due mostly to a lack of congressional agreement, thus most electronic waste legislation is left to the state level. These restrictions have led to some modern innovations in electronic recycling that Embry-Riddle is about to take advantage of.

This event is going to be the first of its kind in Embry-Riddle history and will provide an outlet for almost any sort of electronic waste. The idea for this drive was initially spearheaded by student Christopher Tezak

and was quickly embraced by the Student Government Association's (SGA) Environmental Awareness Committee, who is sponsoring and promoting the event. Due to the expensive nature of electronic waste recycling, the SGA has allocated \$1,000 for the event and has worked out a flat rate contract with the Almet Recycling and Surplus Company, who will be on campus to do the actual pickup and recycling. The Environmental Awareness Committee will most likely provide the rest of the events manpower and will

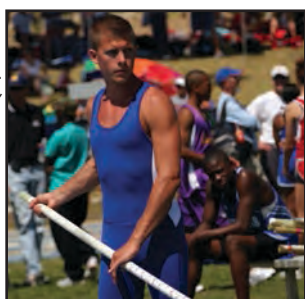
ensure the drive is a success.

All kinds of electronic waste will be accepted and the SGA wants to encourage students to bring whatever they have. "If you just have random electronic parts sitting around and want to get rid of them, this is the time," said Chris Tezak, "there is no better time for cleaning out your closet than this." Almet will accept a plethora of electronics including old compact discs, DVDs, VCRs, TVs, old computer parts, broken cables, cell

Please see "RECYCLING," page A2

Campus News A2
Sports A3
World A4
Opinions A5
Student Life A6
Student Government A7
Aeronautica A8
Space A9
Entertainment B1
Comics B2
Classifieds B3

ERAU Track competes in its first event of the season



Sports, A3

Boeing 787 may be open to hacking

Aeronautica, A8

'Cloverfield' reviewed



Entertainment, B1

CFD reaches into nuclear tech.

Bob Schied
Chief Copy Editor

Last Wednesday, Embry-Riddle hosted Anne Charneau of the University of Florida in a presentation titled "CFD Applications in Nuclear Engineering: A Coupled Fine-Coarse Mesh Solver for Simulation of Gaseous Nuclear Reactors."

The presentation outlined her team's development process of a new Computational Fluid Dynamics (CFD) computer program to a handful of professors and students in the Lehman Building. The code has been developed for more than three years to help model advanced nuclear reactors, specifically those involved in nuclear-powered rockets, where hydrogen or helium is heated through a nuclear reactor in place of a conventional

chemical reaction.

The code was developed to overcome various limitations in commercial CFD programs, such as FLUENT, that make them unsuitable for use in simulating nuclear reactors. Examples of these limitations include high power gradients, high temperature gradients (a surface may be 400 degrees F at one spot and be 4000 F a few feet away), high pressures, and dissociation of hydrogen.

The dissociation problem in particular forced the development of a new program. Hydrogen is a diatomic molecule; in nature, hydrogen gas is always found in pairs of atoms, with the molecule having a weight of two atomic mass units (AMU). At high temperatures, the atoms break apart, reducing the molecular weight of the fluid to one AMU. Most CFD programs only allow for one molecular weight to be entered,

without variation throughout the system.

Overall, Charneau and her team wanted to prove the ability to interface 2- and 3D CFD programs with simpler 1D programs when more detail is not required. Having done so, the next step is to contact vendors to try to integrate parts of the code into commercial products. With nuclear engineering becoming an increasing field for CFD applications, both in space and in terrestrial power plants, the progress made by the team will likely be used more and more in the coming years.

Charneau is a member of the Innovative Nuclear Space Power and Propulsion Institute (INSPP) at Gainesville. She received an undergraduate engineering degree from Grenoble Institute of Technology in France and her Masters and Doctorate in Nuclear Engineering Sciences from the University of Florida.

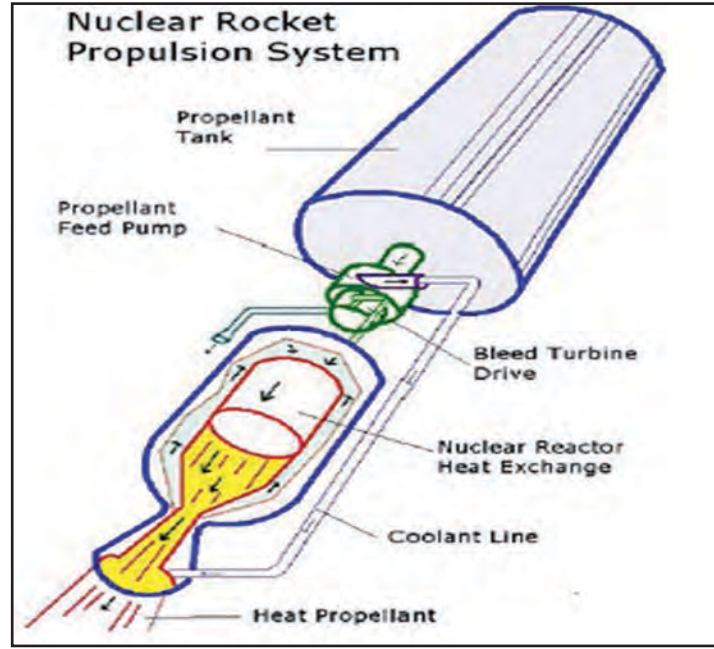


PHOTO COURTESY OF INSPP

CHARNEAU EXPLAINED THE MULTI-dimensional computer code, theoretically helping engineers in safety and efficiency with nuclear rocket systems such as these (above).

“RECYCLING” from FRONT

phones, CD and DVD players, defunct network equipment and generally any old electronic equipment. Almet will then take the old equipment for the flat rate and dispose of the materials properly.

Environmental Committee Chair Evan Halhuber hopes that she has started a regular event here on Embry-Riddle with this drive. "This is definitely something we would like to continue," she said, "I think people would recycle more if it became more convenient for them to do so." Based on the fact that this is one of the most technologically based universities in the world, with some of the most electronically savvy students around, electronic waste recycling seems as if it would be a viable need and a valuable service that the Student Government could provide.

Keep an eye out for posters and static display promotions that the SGA will be posting around campus. Also talk to any SGA representative at the Activities Fair this week for any more detailed information. The event will be from 10 a.m. till 3 p.m. on January 30th at the Flight Deck. Please contact your SGA representative or the SGA Environmental Awareness Committee with any questions. If you would like to get involved, the Environmental Awareness Committee meets every Wednesday at 5 p.m. in the SGA office and everyone is welcome to join.

“HORTON” from FRONT

ancestors who fought on both sides.

His musical skills are not limited to singing and playing the banjo; he brought with him two period guitars, a mandolin, a fiddle, a plastic version of a tin whistle (the metal ones are too fragile to bring onto the road), and a harmonica. Of all them, he prefers the guitar and banjo, having played them since childhood, but he also enjoys the Uilleann pipes and trumpet.

In addition to recreating the songs of the American past, Horton also composes his own music for TV specials. "I try to be 'appropriate' in the melodies, instrumentation and style of the arrangements," he said, through research and correspondence with other experts in the field. For example, he was unable to use a banjo or harmonica for Burns' "Lewis and Clark" documentary, since those had not been invented by the early 1800s. It has obviously paid off; Burns said, "I don't believe I've met anyone quite like Bobby in the ability to understand the soul of American music."

The Arts and Letters series will continue on Feb. 15 at 7 p.m. when students and faculty of Embry-Riddle and Bethune-Cookman University perform the Lois Fennelly play "I Leave You Love," celebrating the life of Mary McLeod Bethune, founder of Bethune-Cookman.

Midnight Cafe huge success



RYAN GORMAN/AVION

STUDENTS FORMED A LINE out the door at Propeller's Midnight Cafe on Friday, Jan. 11. The eatery is open from 11:30 p.m. to 2 a.m. every Friday night and offers breakfast items along with the classic cheeseburger and chicken tenders. Comment cards were distributed to evaluate the popularity and success of the new late night food option.

Starbucks delayed due to paperwork

Stefanie Thaxton
Campus News Editor

Two messages came from the Sodexo office at the start of the new term: "Welcome back" and "Have patience." Many students were expecting to see a Starbucks open at the Jack R. Hunt Library when they returned from their winter break, but due to the amount of permits and licenses needed, the project is still in the developmental stages.

Steve Andrade, Director of

Sodexo for Embry-Riddle, has been working with Daytona-

“*I'm excited... the students have wanted this for so long.*”
-STEVE ANDRADE”

based Coleman Goodemote

Construction as well as Starbucks Inc. directly. "All plans have to go through Starbucks for their approval, so when there is a delay on our end, it's just going to take that much longer, but I'm excited about it because the students have wanted this for so long." Currently, a space in the northeast corner of the library has been partitioned off and initial construction



has begun. Ultimately, there will be a glassed-in outside entrance so as not to disturb the students inside studying. The project is slated for completion by June.

Chick-fil-A and Freshens Smoothies are also on the menu for the Student Center. The entire cafeteria will be rearranged to accommodate these new places and allow for better efficiency. The deli,

soup, salad, and coffee stations will remain in the same general location, with a new, round salad bar offering more selections and easier access. Chick-fil-A will go where the dining service offices are now located, Freshens Smoothies will be around the corner, and the Chinese, pizza, and pasta stations will be where the Landing Strip is currently. All construction in the Student Center will begin after graduation in May 2008 and will be finished before the following fall semester.

Executive Board		Editorial Staff		
Editor-in-Chief Chris Tezak	Managing Editor Erin Roberts	Aeronautics Editor Brian Asbury	Entertainment Editors Peter Richardson William Sohl	Sports Editor Andrew Zaback
News Editor John W. Smith III	Business Manager Marcus Nealley	Campus News Editor Stefanie Thaxton	Front Page Editor Chris Tezak	Space Technology Editor Brandon Boekelman
Photography Editor Melanie Pugh	Advertising Manager Brian Asbury	Chief Copy Editor Bob Scheid	Opinions Editor Brandon Boekelman	Student Life Editor Mayank Kumar
Faculty & Staff Advisors		Chief Prod. Editor Chris Tezak	SGA Editor Ryan Gorman	Systems Manager Pete Richardson
Aaron Clevenger, Director of Student Activities Heather Kenney, Asst. Director of Student Activities Dr. Tom Vickers, Professor of Humanities		Comics Editor Chris Tezak	World News Editor Omid Eshaghi	
General Staff				
Staff Reporters Mayank Kumar Majiej Majewski Matt Smith	Staff Photographers Tim Kramer Melanie Pugh	Secretaries Matt Goldberg Tim Mercer Pete Richardson John Swatkowski Dan Weaver	Distribution Manager Ryan Hattan	
Guest Reporter Toby Bucsescu	Production Editor Chris Tezak	Copy Editors Bryan Manuel Fitz Madu		



By students, for students.

Contact Information

Main Phone
(386) 226-6049

Advertising Manager's Desk
(386) 226-7697

Fax Number
(386) 226-6727

E-mail
avion.newsroom@gmail.com

Website
www.avionnewspaper.com

Publication Information

The Avion is produced weekly during the fall and spring term, and bi-weekly during summer terms. The Avion is produced by a volunteer student staff. Student editors make all content, business and editorial decisions. The editorial opinions expressed in The Avion are solely the opinion of the undersigned writer(s), and not those of Embry-Riddle Aeronautical University, the Student Government Association, the staff of The Avion, or the student body. Letters appearing in The Avion are those of the writer, identified at the end of the letter. Opinions expressed in the "Student Government" and "Student Life" sections are those of the identified writer. Letters may be submitted to The Avion for publication, provided they are not lewd, obscene or libelous. Letter writers must confine themselves to less than 800 words. Letters may be edited for brevity and formatted to newspaper guidelines. All letters must be signed. Names may be withheld at the discretion of the Editor-in-Chief. The Avion is an open forum for student expression. The Avion is a division of the Student Government Association. The Avion is a member of the Associated Collegiate Press. The costs of this publication are paid by the Student Government Association and through advertising fees. The Avion distributes one free copy per person. Additional copies are \$0.75. Theft of newspapers is a crime, and is subject to prosecution and Embry-Riddle judicial action. This newspaper and its contents are protected by United States copyright law. No portion of this publication may be reproduced, in print or electronically, without the expressed written consent of The Avion. Correspondence may be addressed to: The Avion Newspaper, Embry-Riddle Aeronautical University, 600 S. Clyde Morris Blvd., Daytona Beach, Florida 32114. Physical office: John Paul Riddle Student Center, Room 110. Phone: (386) 226-6049. Fax: (386) 226-6727. E-mail: Avion.Newsroom@gmail.com.

Eagles suffer first conference loss

□ "BASKETBALL"
from FRONT

shot 62.7 percent from the field and 54.5 percent from beyond the arc. Denver Cobb and Tyler DeBord each had 14 points with Cobb handing out six assists and collecting five rebounds on the night.

Alex Damiron finished as the leading scorer for the Bobcats with 21 points, while Ceser Chavez Jacobo, younger brother of ERAU alumnus Luis Chavez, tallied 19 points and eight rebounds.

SAVANNAH, Ga. - The third-ranked Embry-Riddle men's basketball team suffered its first Florida Sun Conference loss of the season on Saturday, falling 81-74 to Savannah College of Art & Design (SCAD). The win gave the Bees their first ever win over the Eagles in 11 tries and improved their record to 9-11 overall and 2-2 in the FSC. The Eagles are now 18-2 over-

all and 3-1 in league play.

SCAD jumped out to a seven-point lead early in the contest, outscoring the Eagles 11-4 in the first five minutes. After a 30-second timeout by Embry-Riddle head coach Steve Ridder and baskets by Eric Lorenzi and Rocky Pierre and three straight Pierre free throws, the Eagles took a 12-11 lead at 14:27.

But the Bees, fueled by Eze Andrews' 18 first-half points, went on an 8-2 run to build the lead to 10 points. The Eagles battled back, but struggled from the field, shooting only 37.9 percent for the half and turning the ball over nine times, resulting in a 43-36 halftime deficit.

The Bees extended their lead to as many as 16 points in the second half, the largest deficit for ERAU all year. But the Eagles rallied with just over five minutes left and went on a 15-5 run to pull within four with just 36 seconds on the clock.

On the next play, the Eagles trapped Xavier Blain-Cruz in the back court and forced a turn-over that led to a Tyler DeBord

jumper, making the score 76-74 in favor of the Bees with 36 seconds remaining.

SCAD came up with a steal in the closing seconds of the game to stem the Eagle rally, and Blain-Cruz made up for his miscue, hitting five of six free throws in the last 21 seconds to help the Bees to the win.

Andrews did not have a shot attempt in the last five minutes of the game but still finished as the high scorer with 29 points and nine rebounds. Blain-Cruz had 12 points, eight of which came in the second half, and Chas Johnson (13) and Tim Stammen (10) rounded out the quartet of SCAD players who scored in double digits.

Lorenzi was the high scorer for the Eagles with 20 points and 13 rebounds, while DeBord registered a double-double with 18 points and 13 boards. Pierre and Denver Cobb added 17 and 14 points, respectively.

The Eagles return to the friendly confines of the ICI Center at 7 p.m. on Wednesday when they host Webber International.



MELANIE PUGH/AVION

ERIC LORENZI LED THE Men's basketball team in points against SCAD Saturday night. He had 20 points and 13 rebounds. Tyler DeBord followed with 18 points. This game was the first loss in the conference for the Eagles.

Allen makes par on 11 holes at SALLY Track sets records

Press Release

ERAU Sports Info

DAYTONA BEACH, Fla. - Tara Allen, a junior on the ERAU women's golf team, finished an impressive competition at the Southern Atlantic Amateur Golf

Championships (SALLY) on Saturday. The Brooksville, Fla. native ended with four round total of 302 (76+74+74+78=302), putting her in a two-way tie for 15th place.

In her final round of play at the Oceanside Country Club, Allen made par on 11 holes including a birdie on par-five hole 17, the hole she double bogeyed on during round two. Allen never scored over par in four of the holes, including back-to-back birdies on par-five hole six.

Allen began the competition with a

10-par, two-birdie, 76-stroke performance that put her in a four-way tie for 15th place.

After a +4 round one, Allen was able to birdie four holes in the second round - two par-five and two par-three holes. She made par on half of the holes but a couple bogeys, including a double bogey on hole 17, helped push her to a two-over-par round two finish at 74. She tied for the 10th best score of round two.

Allen entered round three in three-way tie for 16th place with a total of 150. On Friday, Allen posted her second consecutive two-over-par score of 74, putting her three-day total at 224 and allowing her to stand solo at 17th overall. While Allen's score for round three was identical to her round-two results, she improved on five holes, including making par on hole 17. She also improved on par-four holes three and 11, notching birdies after tak-

ing four strokes in round two.

This is the second consecutive year that Allen has been invited to participate in the SALLY. She competed last year and found success, as she won the first flight and finished in the top 30 overall.

SALLY's field includes amateurs from various backgrounds, including NCAA golfers, U.S. amateurs and European athletes. The invitation-only event has a prerequisite of a handicap of seven or less and upon finish, points for national and international amateur rankings are awarded.

Liz Bennett of Sway, England won the Sally with a total of 287.

Allen and the ERAU Eagles begin their spring golf season on Feb. 23 at the Bethune-Cookman tournament taking place in Daytona Beach, Fla. at Indigo Lakes Golf Club.

Jennifer Gillan

ERAU Sports Info

CLERMONT, Fla. - In the first event of the year, ERAU's track teams started with success at the Winter Sun No. 1 as NAIA qualifiers were met and program firsts and bests were recorded.

Two-time All-American Beth McCubbin hit the A standard in the 1,000m with her time of 3:02.55. All-American Howard Walls also qualified under the A standard in the 60m hurdles. He completed the event in a school-record time of 8.27. Walls broke his own record that he set less than a year ago. Nick Gehlsen put his name into the record books once again. The sophomore ran the 5K in 15:32, besting the previous mark of 15:35.90 set by Stuart Patterson last year.

The women's distance medley relay squad hit the B standard with its time of 12:55.79. McCubbin, Noelle Nilblack, Natalie Hildingsson and Lori Costello ran the event for ERAU.

Embry-Riddle also participated in the javelin, weight throw, men's shot put, men's discus, and men's hammer for the first time in school history.

Other highlights included freshmen Eagles that just missed qualifying for nationals in their debut meet. Kevin Bray was seconds off in the 600m while Robert Peterson almost hit the mark 60m. On the women's side, Alexis Williams was close in the 60m and long jump.

The teams now look to improve upon their results from the first meet as they head to the Tom Jones Memorial Classic at the University of Florida on Jan. 26.

Upcoming Golf

Feb. 23-24 - vs. Bethune Cookman at Indigo Lakes GC in Daytona Beach, Fla.

Mar. 3-4 - SCAD Invitational at Wilmington Island CC in Savannah, Ga.

Mar. 15-16 - Eagle Invitational at Pelican Bay North CC in Daytona Beach, Fla.

Mar. 29-30 - Bash at the Beach at Daytona Beach South in Daytona Beach, Fla.

ALL TIMES TBA

Advertisement

Go Greek!

Service

Social

"Meet the Greeks"
Thursday, January 24
Student Activities Fair

Fraternity Recruitment
January 28 - February 2

Sorority Recruitment
See Student Activities

Scholarship

Leadership

Fellowship

For more info contact
lauren.moran@erau.edu

Attack on Shiite worshippers in Iraq

Amit R. Paley

The Washington Post

A suicide bomber killed at least eight people Thursday in front of a mosque in volatile Diyala province as worshippers gathered for a Shiite holiday, another sign of continuing unrest in northern Iraq despite the launch last week of a major U.S. offensive against Sunni insurgents in the region.

Elsewhere in the province, U.S. forces killed two women and injured two others during an air and ground attack on a building that armed men refused



Washington Post photo by Sudarsan Raghavan

“I was expecting such an incident would happen because al-Qaida wants to eliminate all Shiites on Earth.”
-ALI HUSSEIN AL-ZUBAIDI”

pounding their chests to mark the upcoming holiday of Ashura, which commemorates the 7th-century death of Imam Hussein, the grandson of the prophet Muhammad and one of the holiest figures in Shiite Islam.

At least 13 people were wounded in the explosion. Witnesses said it would have been far deadlier if not for a policeman, identified as Riyadh al-Zubaidi, who stopped the bomber from entering the mosque. Security had been tight to guard against Sunni insurgent attacks on the 500 Shiite worshippers inside.

“I was expecting such an incident would happen because al-Qaida wants to eliminate all Shiites on Earth,” said Ali Hussein al-Zubaidi, 28, as he was treated at a local hospital for wounds to his right hand, head and back.

U.S. and Iraqi military officials insisted that the recent campaign against al-Qaida in Iraq, a homegrown Sunni insurgent group that U.S. officials say is led by Arabs from outside the country, has been a success.

“It is not easy to discover and stop suicide bombers,” said Lt.

Gen. Abdul Kareem al-Rubaie, commander of Iraqi military operations in Diyala. “These sorts of attacks could take place anywhere in the world, not just Diyala.”

A land of lush palm and citrus groves, Diyala has become one of Iraq’s most dangerous provinces since insurgents fled there from Baghdad and the western province of al-Anbar, which became less hospitable bases of operations because of the buildup of U.S. and Iraqi forces in those areas.

The unusually large campaign that began last week was designed

to root out insurgents from an area of the Diyala River Valley known as the Bread Basket. “This place was one of the biggest strongholds of the terrorists,” Rubaie said.

There were conflicting reports about the results of the ongoing operation. Rubaie said 20 suspected insurgents had been captured in Diyala, in addition to 18 killed. 1st Lt. Stephen Bomar, a military spokesman in northern Iraq, said 53 had been captured. The difference could not be immediately reconciled. Bomar did not provide a tally of deaths.

Asked to explain the recent string of spectacular bombings in Diyala, Bomar noted that violent attacks in the province decreased from 1,091 in June to 409 in November.

“However, the attacks now are more sensationalized, such as suicide-vest attacks,” he wrote in an e-mail. Referring to the recent joint U.S.-Iraqi operation, he added: “Signs are pointing towards success.”

The U.S. military acknowledges that the operation prompted many fighters to escape from the Bread Basket to other parts of Diyala. “Recent success in the Diyala River Valley region pushed these terrorists to seek safe haven” farther north near Hamrin Lake, the military said in a statement.

Three insurgents and at least two civilians were killed during a firefight on Thursday near the lake, the statement said.

According to the military account, U.S. troops and an aircraft

engaged gunmen in a building where occupants refused orders to come out. After the gunfire stopped, soldiers discovered that two women had been killed and two others wounded during the incident, the military said. In another operation, U.S.

“These sorts of attacks could take place anywhere in the world, not just Diyala.”

-ABDUL KAREEM AL-RUBAIE”

forces killed a man who ignored instructions and warning shots when he was ordered to leave a building, the military said.

The U.S.-led coalition “deeply regrets when civilians are hurt or killed during operations to rid Iraq of terrorism,” Maj. Winfield Danielson, a military spokesman, said in the statement. “These terrorists deliberately place innocent Iraqi women and children in danger by their actions and presence.”

Special correspondents Zaid Sabah, K.I. Ibrahim, Saad al-Izzi, Naseer Nouri and other Washington Post staff in Iraq contributed to this report.

Sixth century tradition meets 21st century

Ellen Knickmeyer

The Washington Post

The Cairo woman stared in disbelief at the text message in her cellphone inbox.

She and her husband, an Egyptian army officer away on duty, had just hung up after quarreling on the phone. She ignored his return call, not wanting to continue the argument, the woman recounted in an interview.

The electronic chirrup of an incoming message signaled his response. “I divorce you,” her husband had written. “That will teach you not to answer my calls.”

Reconciliation followed, only to be broken by another quarrel, this one over the woman asking her family to mediate the couple’s problems. “I divorce you,” her husband wrote in another message. “Don’t ask other people to interfere in our business.”

Another reconciliation. Another argument. And another declaration of divorce from her

husband, this time face to face, late last year.

Islamic law can make the act of divorce stunningly simple for men, even if the ensuing financial settlements often are not. A husband has only to declare to his wife, “Inti talaq” — “You are divorced” — three times, and mean it, to end their marriage.

But technology has introduced a complication that Egyptian religious authorities are now debating in the case of the 25-year-old Cairene, an engineer and an observant Muslim: How should Islamic laws that began to take shape in the 6th century apply to 21st-century text messages?

In Malaysia, the United Arab Emirates and Qatar, where some of the first text-message divorce cases have arisen in recent years, civil and religious officials have arrived at varying conclusions.

Until Egyptian courts and religious scholars decide the fate of the woman’s marriage, she lives apart from the officer with their 4-year-old son, but still wears her wedding ring.

She asked that her name not be used to protect her privacy, because such cases are so rare in Egypt.

“What hurts me most is I don’t even know if I’m divorced or not,” she said in an interview. The woman, slim and soft-spoken, wore a lavender head scarf to cover her hair and matching lavender shadow drawn carefully around her eyes.

Judicial officials confirmed her identity and the facts of the case, initiated in family court in December. Court officials could not agree on whether the case was Egypt’s first or second text-message divorce. They said the army officer had not yet appeared in court.

Islamic institutions have adroitly adopted evolving technology to spread their message and tend their followers. Preachers abound on satellite television channels. Many religious institutions and sheikhs offer Web sites that provide their followers with online fatwas, or rulings, on religious questions.

Egypt’s state-appointed grand mufti, one of the country’s

highest religious authorities, recently began offering online imam training. Grand Mufti Ali Gomaa’s fatwa Web site receives 3,000 hits a day, and a similar hotline gets scores of calls a day, according to his spokesman, Ibrahim Negm. Almost all the inquiries have to do with family matters, including divorce, he added.

Yet the proliferation of televised preaching and Islamic Web sites has produced a confusing array of voices competing for followers. Broadcast and Internet media can amplify hate or oversimplify a complex religious point. Technology offers modes of communication that the first practitioners of Islamic law never could have imagined.

Conservative and liberal streams within Islam each have used technology to get their messages across. In Egypt, young members of the Muslim Brotherhood movement used blogs last year to urge that the Islamic organization be more inclusive of women and less exclusionary of other religions.

Islamic institutions have

adopted Web sites and other technology as a tool to show that Islamic law still provides “pragmatic solutions to contemporary problems,” Negm said. “We also believe there has been abuse of technology,” he added. “This does not lead us to say, ‘Forget it.’ That would not be possible.”

But text-message divorces represent “a clear-cut abuse of the law,” Negm said.

Religious authorities in at least two Persian Gulf countries, the United Arab Emirates and Qatar, upheld divorce by text message in rulings between 2001 and 2003. Islamic officials in Singapore rejected it.

Government officials in Malaysia decried the first cases, promising big fines for any man who tried to shed his wife by impersonal text messages. Malaysia’s religious leaders upheld the legality of text-message divorce, and government talk of bans and fines ended.

Even before the advent of text messages, divorce was too easy in Egypt, said Hoda Badran, chairwoman of the Cairo-based

Alliance for Arab Women.

Quick divorces, especially among poor families, often allow husbands to bully less-educated wives out of divorce settlements, leaving the women without enough to support themselves and the children, Badran said.

“Ninety-nine percent of the children out on the streets are there because of divorce” and polygamy, Badran said. “What’s the actual cost, the economic cost, of the unlimited divorce?”

For the 25-year-old engineer, text messages have made the costs impossibly high.

Her husband wants her back, the woman said, but the religious scholars she consulted tell her she is divorced in the eyes of God and would be returning to him out of wedlock.

But if she refuses to return, and the courts rule the text-message declarations invalid and her marriage intact, she risks losing her claim to her young son.

With the text messages, she said, “the doors of hell have opened on my life.”

British Council suspends regional offices in Russia

Peter Finn

The Washington Post

The British Council on Thursday suspended operations at its two regional offices in Russia, citing “a campaign of intimidation against our staff” that the cultural organization said presented a “significant risk to them.”

The announcement of the closures in St. Petersburg and Yekaterinburg came as British Foreign Secretary David Miliband, speaking to Parliament, condemned Russia’s actions as “reprehensible, not worthy of a great country.”

The confrontation is the latest chapter of a Russia-Britain diplomatic dispute that has been gaining strength since the November 2006 murder in London of Alexander Litvinenko, a former Russian domestic security officer who was a fierce critic of President Vladimir Putin.

Russia had demanded that Britain shut down the two regional offices of the British Council, the international cultural arm of the British government, charging that they were operating illegally in Russia. But Russian Foreign Ministry officials also linked the closure order to the Litvinenko affair, specifically Britain’s expulsion of four diplomats last year after Russia refused to extradite a suspect in the murder.

On Monday, Britain defied Russia’s closure order and

reopened the St. Petersburg and Yekaterinburg offices of the council after the New Year’s break.

On Tuesday night, Russian tax police visited the homes of some of the council’s Russian employees, and Wednesday, the Federal Security Service, or FSB, the domestic successor of

“We saw similar actions during the Cold War, but frankly thought they had been put behind us.”

-DAVID MILIBAND”

the KGB, questioned Russian employees.

Martin Davidson, chief executive of the British Council, said the FSB interviews “had little to do with their work and were clearly aimed at exerting undue pressure on innocent individuals.” Miliband told the House of Commons that FSB “questioning ranged from the institutional status of the British Council to personal questions about the health and welfare of family pets.”

Stephen Kinnock, head of the St. Petersburg office of the British Council, was followed as he drove from a

dinner Tuesday night, stopped by police and accused of drunk driving — an allegation vigorously denied by the British.

Kinnock, who has diplomatic status, is the son of the British Council’s worldwide chairman Neil Kinnock, a former leader of Britain’s governing Labor Party. What the British believe was the deliberate targeting of Kinnock, not a random traffic stop, clearly infuriated London and added some vinegar to Thursday’s broadsides.

“We saw similar actions during the Cold War, but frankly thought they had been put behind us,” said Miliband. “Russia’s actions therefore raise serious questions about her observance of international law, as well as about the standards of behavior she is prepared to adopt towards her own citizens. ... Russia’s actions against the British Council are a stain on Russia’s reputation and standing.”

But Russian politicians accused the British Council of arrogantly flouting the law.

“I guess Russia is the only place where it has been attempting to act in line with British law,” said Konstantin Kosachyov, head of the international affairs committee in the lower house of Russia’s parliament, the Russian news agency RIA-Novosti reported. “Russia is not a banana republic. We have a functioning legal system, and any foreign organization, irrespective of the type of activities it carries out, has to comply with Russian laws.”

Renowned Mexican radio host leaves airwaves amid censor concerns

Reed Johnson

Los Angeles Times

For some Mexicans, it was as if a combination of Diane Sawyer and Christiane Amanpour had been summarily bounced from the airwaves.

That’s been the widespread reaction to the Jan. 4 decision by journalist Carmen Aristegui to terminate her 5-year-old morning talk show on the capital’s W Radio, because of what she described as growing editorial differences with the station’s co-owners, Mexico’s giant Grupo Televisa multimedia company and Grupo PRISA, Spain’s largest media conglomerate.

In the past two weeks Aristegui has said little about the matter, granting only one interview to the liberal magazine Proceso, in which the veteran journalist gave few specifics behind the reasons for her departure.

But in the interview she indicated her belief that her radio show, “Hoy por Hoy” (Day by Day), had aroused the antipathy of powerful interests, including Cardinal Norberto Rivera and President Felipe Calderon’s administration.

“Everything seems to indicate that there is someone that called for my head and someone that yielded it,” Aristegui was quoted as saying in Proceso.

Aristegui’s departure from W Radio has set off a flurry of op-ed commentary in Mexico City newspapers. Several commentators have denounced the incident as an act of censorship and harassment

by media and governmental interests.

“Carmen, the way she said things, they didn’t like that in

“I think they just didn’t renew the contract in a gesture to make the president happy or the government happy.”

-MARTA LAMAS”

the presidency,” said Marta Lamas, a leading women’s rights and abortion advocate, while attending a Friday morning pro-Aristegui rally of about 200 people in the capital’s downtown. “I think they just didn’t renew the contract in a gesture to make the president happy or the government happy.”

Televisa and PRISA have denied putting pressure on Aristegui to leave. On Thursday, Televisa ran a newspaper ad insisting that it never had attempted to influence the content of Aristegui’s radio program.

“Grupo Televisa reiterates that never” has it intervened “in the editorial decisions of news,” the ad read in part.

Reached by phone at his office here Friday, Manuel Compean, Televisa’s director

of communication, said the company would have no further comment.

One of Latin America’s best-known journalists, with a reputation as a tough but fair interviewer, Aristegui consistently tackles subjects that many other Mexican media outlets tend to avoid. She has reported extensively on the continuing disputes surrounding the 2006 presidential election, in which the conservative Calderon narrowly defeated his leftist opponent, former Mexico City mayor Andres Manuel Lopez Obrador.

She also has reported on a lawsuit charging Rivera and Los Angeles Cardinal Roger M. Mahony with conspiring to cover up the actions of an alleged pedophile priest. Last year, a Los Angeles County Superior Court Judge ruled that he had no jurisdiction in the case, leaving its outcome uncertain.

Aristegui continues to host a talk show on CNN en Espanol.

At Friday’s rally, about 200 supporters listened to speakers praising Aristegui and declaring that the cancellation of her program posed a threat to free speech and to Mexico’s movement toward fuller democracy. One speaker, Lorenzo Meyer, said that because most Mexicans get their news from Televisa and Azteca, the country lacks a plurality of news and opinion.

“It’s a democracy in form, but it doesn’t have substance,” he said. “It’s ‘light’ democracy.”

Staff writer Cecilia Sanchez in Mexico City contributed to this report.

Outcry over ERAU No-Show policy

Embry-Riddle has always prided itself on its commitment to excellence in education and customer service to its students. They offer a diverse and challenging curriculum which turns out some of the most well prepared students in the industry. However, there seems to be an uncomfortable trend developing amongst the administration to treat this place more like a business and less like a learning institution. I understand a need for the school to make money, and I understand that we have to find ways of making our own money since we receive to assistance from the government. The people that have worked so hard to make ERAU a business have seem to forgotten that we are all still students and that while we should be getting prepared to enter the industry were still here to learn.

This year we introduced a new No-Show policy at the

flight-line. It simply states that "financial grounding shall not be used as an excuse to prevent a No-Show" (Ops Manual Sect

“
The No-Show policy doesn't give students a chance for error anymore.

-JOHN EVANS”

3.5). First of all, for the newer students, let me explain the difference between grounding and hold. Grounding is something that is temporary in nature and relates to something other than a break or a long term inability to fly. This can be as simple as forgetting to pay your bill at the end of your flight or grounding yourself with health services

when you feel ill. A hold is for when you know you are not going to be able to pay for a while and you need not to fly. Your team manager can do that for you, but you are limited to only a certain number of days. The new policy cuts short the amount of grounding days you can use before it begins to affect your grade. So while it does weed out the lazy students, it punishes the students who are legitimately waiting on financial aid or money from your parents.

The No-Show policy doesn't give the students a chance for error anymore. In their effort to weed out the bad students who don't want to fly or are too lazy they are hurting the good students who just make a couple of simple mistakes. There's no room for leniency anymore and all were doing is charging students more money unnecessarily and hurting their sense of confidence in this university. Based on a

self-compiled report from Fall 2007 (made with comparisons to the 2006-2007 school year) the amount of total No-Shows has gone up 35 percent with the total number jumping from 939 No-Shows for ALL of last year, to 721 No-Shows for ONLY this semester, with a projected total just over 1,400 for the whole year. The amount of financially related No-Shows has gone up just over 600 percent. The amount of unexcused No-Shows has gone up 40 percent. The total to ERAU students last year as a result of No-Shows (based on all of them being a \$100 charge and doesn't take into account second offenses being \$200) was approximately \$49,600 while the total cost this semester is approximately \$41,300, with a total projected cost of approximately \$82,600.

These numbers are sobering to say the least and now to make matters worse the university has decided to get

rid of all of the cashiers at the flight payment station, some of whom have been there for the better part of a decade. Their goal is to replace them with a flight payment kiosk! As if firing knowledgeable and caring employees is going

“
The administration needs to see that its people are its most useful asset...

-JOHN EVANS”

to make it easier on students to complete an already complicated process. Is a kiosk going to be able to answer student's questions easier? Is it going to be able to offer suggestions based on its experience? What

about firing the only people who know what its like to be a flight student makes the students experience a better one?

I have never been more disappointed in a decision this university has made than I am with this one, and I'm afraid its just going to keep getting worse. This is a great University with a great staff. However, the administration needs to see that its people are its most useful asset and that students need to be treated like students, not employees, or I'm not sure anyone is going to want to fly here anymore.

Statistics based on a careful study of all No-Shows and No-Show petitions received by the ASSAB over the last semester and the previous school year. Statistics are not official and are only estimations based on raw statistics received by the ASSAB.

~John Evans

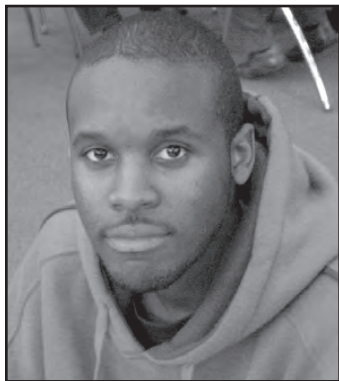
Student Forum

The Avion asks: "Who are you planning on voting for?"

-Compiled by Brandon Boekelman, Matt Goldberg, Marcus Nealley



Jason Makowski
Junior
Aviation Business Admin.
"I don't know."



Jeff Humley
Freshman
Air Traffic Management
"Undecided."



Stephen Roy
Senior
Aeronautical Science
"The lesser of all evils."



Angel Toro
Senior
Air Traffic Management
"Obama."



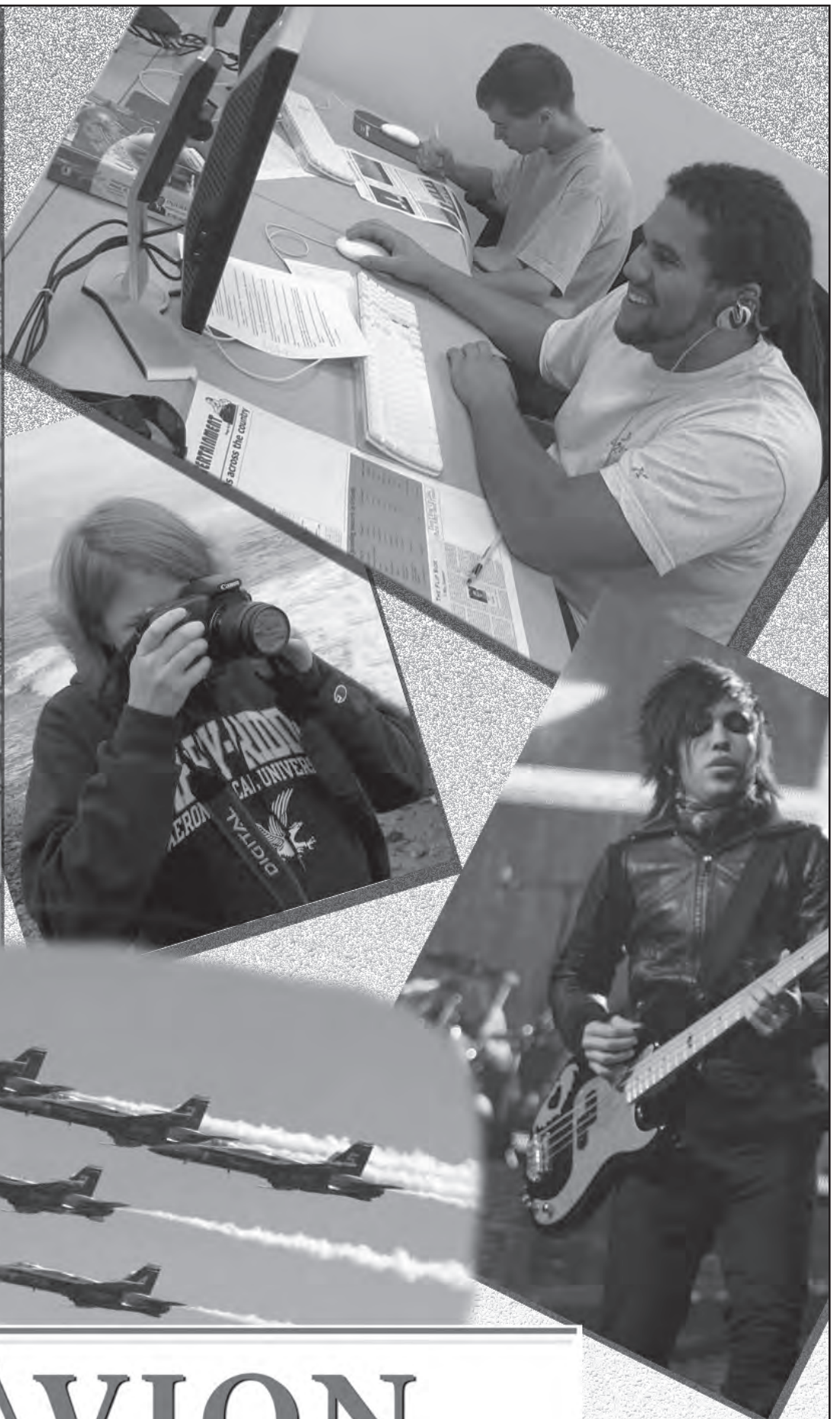
Danielle Lariviere
Sophomore
Engineering Physics
"Giuliani."



Jacqui Hood
Sophomore
Engineering Physics
"Giuliani."

Advertisement

Weekly meetings on Tuesdays @ 7pm in the Endeavor Conference Room



THE AVION

Sheppard at Stetson

Justin E. Cartledge
Gay-Straight Alliance

Executive Director of the Matthew Shepard Foundation, Judy Sheppard, will be speaking at Stetson University this Wednesday, Jan. 23, 2008. The event will be held in the Rinker Field House inside the Hollis Center, 600 N. Bert Fish Drive, DeLand. Doors will open at 6 p.m. and the event will begin promptly at

7 p.m. The Orlando Gay Chorus will also be performing at this event.

Judy and Dennis Shepard lost their 21-year-old son, Matthew, to an anti-gay motivated murder in October of 1998. Since then, Matthew's mother, Judy, has founded the Matthew Shepard Foundation to champion social justice, diversity and GLBT issues. For more information visit www.matthewshepard.org.

The Gay-Straight Alliance at Embry-Riddle is a newly formed student organization dedicated to the same diversity and GLBT issues on the Embry-Riddle Daytona Beach campus. For more information on the Gay-Straight Alliance at Embry-Riddle visit www.met-me.net/GSA. Please e-mail dbgsa@erau.edu to coordinate transportation to the Judy Sheppard event.



ΣΑΕ remembers president

Will Gons
ΣΑΕ

First of all I hope everybody had a great break. We have had a lot of excitement over the break here in Sigma Alpha Epsilon.

Our current vice president Israel Sandoval has been hired by ASA airlines. He will be leaving in a week to start his training in Atlanta. He has been one of the most influential and helpful brothers in SAE. He always goes above and beyond to help anybody that needs help.

To commemorate his greatness we have dedicated the second floor of the College of Business

to Izzy. Each room will have a picture of Izzy from each of his many extracurricular activities. On the floor of the second floor atrium will be a mosaic of his portrait, so he will not be forgotten. Good luck, Izzy.

It's also that time of year again. The activity fair is coming up very soon. Don't forget to stop by the Sigma Alpha Epsilon table to talk with some brothers and get more information about rush week. We have some great events planned out for you. Just a couple of the activities are going for wings at Wing House, and a classic, dodge ball. Good luck with the semester and hope to see you at the activities fair.



Pi Kappa Alpha welcomes all

Grant Roberts
ΠΚΑ

The Pi Kappa Alpha Fraternity would like to welcome all students back from winter break. We are looking forward to a very busy semester.

This week we will be having a social with the Alpha Chi Omega Sorority from Stetson University. We will also be hosting a BBQ this Friday from 4 p.m. to 6 p.m. on the West Lawn for any students of the university interested in

finding out more about Pike. We have a formal scheduled in April and are excited for a very active semester.

As Pikes, we pride ourselves on the foundation of S.L.A.G., which stands for Scholars, Leaders, Athletes, and Gentlemen. We have an average G.P.A. of 2.89 as well as several members in other organizations, including student government, ROTC, and O-Team. We are very competitive in athletics and have won the greek intramural championships for the past two years.



THE AVION

Attention all Clubs and Organizations:
The Avion wants your submissions!

Submit articles about what is going on with your organizations, news, new members, events, and other general information for the Student Life page.

Articles should be at least 200 words and should be sent by 5 p.m. Friday to avion.newsroom@gmail.com.

We are now accepting "club ads!" Submit a single PowerPoint slide with your information on it and it will be printed as is.

For the creatively inclined we will accept .jpeg's with a size of 4.23 inches by 3.17 inches.



[EXAMPLE]



[EXAMPLE]

Advertisement

Come Fly with Us

Great Prices. Really Convenient

Save Money AND Fly the Best, Most Advanced Aircraft.
You'll Love Our New Cessna 172-SP Fleet!

Call Now for Details.

- Highly Qualified Instructors
- Value-Priced Programs
- New C-172-SP Fleet
- Private/Instrument/Commercial/ME

- FAR Part 141 and 61 Courses
- CFI, CFII, MEI/ATP
- Turbo Prop/Turbo Jet
- Glass Cockpit EFIS FMS Course
- Special ERAU Time-Building Program

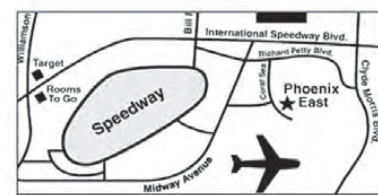
- Fly at YOUR Convenience
- Approved for VA Benefits
- Nationally Accredited Training
- Financing Available if Qualified

Training Pilot Candidates for Airlines Worldwide Since 1972

(386) 258-0703

561 Pearl Harbor Drive
Daytona Beach, FL 32114
www.pea.com

PHOENIX EAST
AVIATION, INC.





Student Government Association

"Driving the change ... Setting the standard."

SGA saves students thousands of dollars

Bryan Dietz

Student Representative

The Student Government Association (SGA) and Housing have begun a full recycling program in the Residence Halls targeted to save more than \$4,100 in student payments this semester. Every trash can in the Student Village, Doolittle, Apollo and McKay has a green recycle bin placed next to it able to accept all paper, plastic (including food containers) and aluminum recyclables.

This recycling program in the residence halls is the first step towards a campus-wide pro-

gram. "Our goal is to save the student's tuition and be responsible citizens with our resourc-

"The key to the success of this program is based upon how students recycle..."
-BRYAN DIETZ

es," said Ryan Hattan, SGA Vice President. "This is just the

first step to spending student's money more wisely here on campus."

The current recycling program in the University just accepted paper products. Anything other than paper thrown into the green recycle bins around campus would contaminate all the recyclables in the bin. WWF employees, the contracted company for facilities that cleans all buildings on campus, were instructed to throw away anything in a contaminated bin and to only recycle paper in the bins if the bins were uncontaminated. As recently as last semester, when speaking with WWF employees that work in

the Student Center, they were unaware of any bins on campus to recycle anything other than paper. They were told to

"This is just the first step to spending student's money more wisely here on campus."
-RYAN HATTAN

take recyclables such as plastic, glass and aluminum and treat

them as trash.

The new recycling program eliminates any need to separate by aluminum, plastic or paper. All recyclables can now be placed into one can without being sorted. Waste Management sorts all recyclables for the students. "This new program is fool proof," said Student Representative Board Member Evan Halbhuber. "All you do is throw anything that can be recycled into one can and clean out plastic food containers."

The key to the success of this program is based upon how many students recycle in the residence halls. Each eight-yard trash dumpster on campus costs the student \$2,076 more than a same size recycle bin each year. By replacing eight-yard dumpsters here on campus, the SGA plans to give students better services and to keep student fees low.

As of Saturday, Jan. 12, five days into the official start of the semester, the two eight-yard recycling dumpsters were completely filled and overflowing. Recyclables were beginning to back up in the O'Connor and Wood Hall trash rooms. WWF employees have spoken with SGA officials this past week asking if there are plans to quickly add another eight-yard dumpster behind the Student Village and to double the recycling collection bins in the trash rooms to two bins per room.

The recycling program is the beginning for what the SGA

has planned in order to make this campus run efficiently. The SGA is doing research on placing solar panels on top of residence halls and academic

Quick Facts

- Recycling will save \$4,100+ this semester.
- University can help tuition from rising by recycling.
- Students can now recycle paper, plastic and metals in their residence halls.
- Recycling bins are available next to trash cans in the Student Village, Doolittle, Apollo and McKay Halls.
- Questions? Stop by the SGA office.

Progress committee helps students

Angeline Ranieri

Student Representative

Progress Committee Update: Welcome back, everyone! The Progress Committee is excited about another busy semester. We have many projects that we are looking to complete. We will be continuing with projects from last semester such as installing a payphone in the Student Center, extending the hours in the library, updating the university website, improving food and working with City and

University officials to install a bike land along Clyde Morris Boulevard.

In our efforts to keep students safe, and increase safety for the Students who bike and/or walk along Clyde Morris Boulevard, the SGA had planed a "Project Save our Students" program. Unfortunately, last Thursday and Friday our "Project Save Our Students" program was canceled due to the weather. This program will be rescheduled for a later date and students will be able to receive free information regarding bicycle safety

and also a free LCD light for their bike (while supplies last). Safety will also be available to register bikes and offer their "Lease a Lock." Look for flyers and banners letting you know when you can come out and get this valuable information.

Among other things the Progress Committee is working on, improving your experience with Dining Services is one of our highest priorities. We work very closely with Sodexo. Students who are interested in being on the Food Committee should contact Angeline Ranieri.

This food committee offers suggestions and ideas for food served on campus. Below you will find this week's menu for dining locations on campus.

The progress committee is always looking for new members to bring their ideas and help with our many projects. If you are interested, please feel free to attend one of our meetings on Mondays at 5:45 p.m. in the SGA Conference Room. If you have any questions, please feel free to contact Angeline Ranieri at Angeline.Ranieri@erau.edu or stop by the SGA office.

College of Business Grand Opening



MELANIE PUGH/AVION

ON JAN. 31, THE COLLEGE of Business will be celebrating the grand opening of their brand new building. The new building now houses the College of Business and a new state of the art computing lab, replacing the C-Lab.

SGA upgrades TVs

For those students who are frequent visitors to the Landing Strip, there have always been televisions that have never worked. However, this past week, the Student Government Association (SGA) has purchased and installed four new televisions in the Landing Strip.

The previous four televisions in the Landing Strip have been a long-standing complaint among students. The televisions were so old that they were not the responsibility of anyone as they came with the renovations of the Landing Strip in the 90s. Only three of the four televisions in the Landing Strip were operable, without any functioning buttons on the television to even fix them. The one tele-

vision that did work has been stuck on the same channel for years on end.

The new 24-inch HD compatible televisions purchased by the SGA. They were purchased as a direct result of suggestions made by students who utilized the SGA suggestion boxes located around campus. "This campus is for the students," said Progress Committee Chair Angeline Ranieri. "If they have a suggestion, we are going to act on it."

The new televisions can be changed to any of the 60-plus campus television stations at any time. All students are invited to watch any program they would like any time and to take advantage of this new service provided by the SGA for students.



Bryan Dietz
Student Rep.

Student Representatives Needed

Positions available for the 2008 Spring Semester

- 3 Positions for College of Engineering
- 2 Position for College of Aviation
- 1 Position for College of Business
- Pick up an Application at the front desk in the SGA office today!!

Applications DUE:

January 23, 2008 by 5:00pm.

Interested in helping clubs?
Want to become more involved?

APPLY for the Student Finance Board

Pick up an application in the SGA office.

Any questions? Email SGA Treasurer, Natalie Anaya, at sgatres@erau.edu

Applications due no later than Tuesday, January 22nd at 5pm

- College of Business Building - Grand Opening

★ SAVE THE DATE ★

January 31 @ 5:00 p.m.

★ Join in the celebration of our new building and:

- Meet your own Embry-Riddle Professors
- Take a tour of the new building
- Official Ribbon Cutting Ceremony



Antarctica's first passenger jet lands

Matt Smith
Staff Reporter

The continent of Antarctica recently received its first commercial airline flight. The flight, which left Hobart, Australia, landed on the Wilkins ice runway in Antarctica after a flight of four and a half hours.

The runway was built at a cost of \$41 million, and officials are still not sure if it will even last the winter months. Officials say that the runway will move about 40 feet a year due to glacial drift. The runway itself is over 13,000 feet long, made of ice 2,000 feet thick. Before the new air link between Australia and

Antarctica researchers would have to have taken either take a military cargo flight or a boat ride that would take up to 10 days. The flight, however, is only open to scientists and researchers that are traveling to the icy continent for research and educational purposes. The flight is operated by Australian charter

company Skytraders and will operate the flight once a week with an Airbus A319. The flight will only operate in the Southern Hemisphere's warmer months - from October to March, ending before the conditions deteriorate during the winter months.

Australia's Environment Minister Peter Garrett was aboard the first flight and said, "This is a tremendously exciting time in Australian Antarctic history. A permanent direct air link with Antarctica has been a long-held dream." The flight was originally supposed to start in December; however, a number of safety issues pushed the start date into January. One of the main problems was to ensure that the Airbus A319 would be able to continue the flight should it lose one of its two engines en route. Also, officials wanted to make sure that the plane would be able to carry enough fuel to make the flight roundtrip, as there is no way to refuel the plane in Antarctica.



PHOTO COURTESY DAN COLBOURNE/AUSTRALIAN ANTARCTIC DIVISION

THE AIRBUS A319 AFTER its' maiden voyage into the Antarctic. Flown by charter company Skytraders, the flight from Australia to Antarctica will operate once a week.

B-787 open to hackers?

FAA has security concerns about on board WiFi

Mayank Kumar
Staff Reporter

Boeing's initial plan of providing passengers with enhanced in flight entertainment by providing in flight

able to hackers or hijackers. Security analysts are doubtful about the vulnerability of control systems although Boeing says that they have implemented safeguards to shut out the users that are not authorized for access.

"The odds of this being perfect are zero," Bruce Schneider, chief technology officer at the security ser-

shares hardware with the plane's aviation electronics. There are multiple layers of hardware and software" that ensure "data cannot pass from the passenger enainment network to the other more secure networks on the airplane."



On this matter, the FAA released a statement sayin,



vices firm BT Counterpane, told the Associated Press. "It's possible Boeing can make their connection to the Internet

"Because of this new passenger connectivity, the proposed data network design and integration may result in security vulnerabilities from intentional or unintentional corruption of data and systems critical to the safety and maintenance of the airplane."

But as of now, the FAA says that they are satisfied with Boeing's work. "We are always in constant communication and are satisfied with what they have provided," FAA spokesman Allen Kenitzer said.

Rival company Airbus, wrote a statement to the FAA, trying to make their point that such a system "is not technically and operationally viable."

The other FAA-based lab tests are all over with and all that is left now are a few tests for when the aircraft is airborne. Boeing plans to complete this by March. As for excited future passengers, some are beginning to lose confidence, while some others are still anxiously waiting with high hopes.



PHOTO COURTESY BOEING

internet access and connectivity has intersected with the FAA rules and regulations. And now, the FAA requires Boeing to sufficiently prove that this provision will not leave the aircraft's control systems vulner-

secure. If they do, it will be the first time in mankind anyone's done that."

Boeing's spokeswoman Lori Gunter told AP that there is "not any place where the passenger interface to the Internet

Aviation briefs brought to you by



Belvoir Media Group, copyright 2007, www.avweb.com

Boeing 777 Heathrow Crash Update

An initial report offered by the Air Accidents Investigation Branch, Friday said interviews with crew and analysis of the "Flight Recorder" aboard the British Airways Boeing 777 200ER that crashed Thursday at Heathrow indicate the aircraft's engines did not respond to commands from the Autothrottle or the flight crew. So far, fuel levels appear to have been adequate, as "a significant amount of fuel leaked from the aircraft, but there was no fire," according to the report. The lack of throttle response occurred at approximately 600 feet and two miles out, ultimately planting the 777 about 1,000 feet shy of Heathrow's Runway 27L. None of the 135 passengers and 16 crew aboard were seriously injured. The aircraft's right mains separated and the left mains were pushed up through the wing root. The flight's first offi-

cer John Coward was at the controls at the time, captain Peter Burkill (or Burkhill) praised his co-pilot's performance as a "most remarkable job".

Researchers Improve Turbulence Forecasts

Everyone who flies depends on weather reports and forecasts every day, but we seldom think about the raw science that goes into making and refining such predictions. This week, a team of weather researchers from the U.S. and U.K. say they have come up with a better way to forecast clear-air turbulence, based on "spontaneous imbalance theory." John Knox, Donald McCann, and Paul Williams said their new technique is more consistently successful than current methods, and improves on an earlier method developed by McCann. The team will present a paper about their work

next week at the Aviation, Range, and Aerospace Meteorology Conference in New Orleans.

Western Michigan U. Boosts CFI Pay, Benefits

Western Michigan University's College of Aviation is offering higher pay and benefits to its flight instructors, who have been leaping to regional airlines with increasing regularity. "A few years ago we kept a flight instructor for an average of 24 months," said WMU chief flight instructor Tom Grossman. "In the past six months, it's become common for them to stay only four to six months before taking that first industry job." The college is now offering flight instructors up to \$29 per hour, up from a maximum of \$20 per hour, Grossman said, plus reduced rates on aircraft rental and jet orientation courses.

The Avion introduces "Aircraft of the Week." We would like to pick one aircraft each week and present facts about this aircraft. Like what you see or have a specific aircraft you would like to see featured? Email us at avion.newsroom@gmail.com

F-22 Raptor



PHOTO COURTESY U.S. AIR FORCE

Factoid

- **Maximum speed:** Mach 2+
- **Service Ceiling:** 65,000 feet.
- **Armament:** 1 x 20mm M61A2 Vulcan gatling gun, 6x AIM-120 AMRAAM, 2x AIM-9 Sidewinder
- **Price Tag:** \$160 million

THE ADVANCED TACTICAL FIGHTER entered the demonstration and validation phase in 1986. The prototype aircraft (YF-22 and YF-23) both completed their first flights in late 1990. Ultimately the YF-22 was selected as best of the two and the engineering and manufacturing development effort began in 1991 with development contracts to Lockheed/Boeing (airframe) and Pratt & Whitney (engines). EMD included extensive subsystem and system testing as well as flight testing with nine aircraft at Edwards Air Force Base, Calif. The first EMD flight was in 1997 and at the completion of its flight test life this aircraft was used for live-fire testing. -U.S. Air Force

Airbus v. Boeing in the news

Bob Scheid
Chief Copy Editor

Airbus' A380 commercial airliner had an interesting January, with one new delivery and one small mishap. Also, Boeing continues to have problems with supply and will be delaying its 787 production.

On Jan. 11, AFP reported that Singapore Airlines received delivery of the second production A380 aircraft from Airbus, two months after the first was delivered. This second plane has the same configuration as the first, with 471 seats in a standard three-class configuration. According to the Airbus website, the first

aircraft has been in operation for about 15 hours per day with no technical problems yet reported.

However, a problem with a tow vehicle caused the first plane to drift off a Changi runway prior to takeoff on Jan. 11. Details were still lacking at press time Sunday, but something aboard the tow truck failed, possibly the hydraulics, causing the aircraft to disconnect and drift off the runway to the right. The passengers debarked safely, and the plane was grounded pending an inspection to make sure there was no structural damage.

The airplane's tires that came into contact with the grass were replaced as a precaution, but there was no structural damage to the rest

of the plane. Meanwhile, Boeing announced Jan. 16 that it would be pushing back the program of its 787 airliner due to supply problems. Scott Carson, president and CEO of Boeing's commercial airplane division, said in a press release that "We continue to be challenged by start-up issues in our factory and in our extended global supply-chain." Assembly of the first vehicle is proceeding, but first flight has been delayed by three months to the end of second quarter.

Production deliveries are expected to be delayed as well, now scheduled to begin in the first quarter of 2009. All Nippon Airways will be the recipient of the first production aircraft.

China sets deadline to launch its own jumbo jet company

Majiej Majewski
Staff Reporter

China has set a March deadline in order to establish a company to build its first jumbo passenger aircraft. The nation is moving to position itself among countries already being able to manufacture large passenger aircraft. If everything goes as planned, that dream should be realized by 2020, experts say. Liu Daxiang, head of the

Department of Science and Technology Development under China Industry Aviation Corporation, announced that "We are now fairly well conditioned for making large aircraft with the sound support from growing national economic strength, technological development and experience in manufacturing."

The 90-seat ARJ-21 regional jet project which was initiated in 2005, has given the Chinese aviation industry good experi-

ence in manufacturing technology, management and marketing that will be necessary in order to produce larger aircraft in the future, Liu said. The ARJ-21 is scheduled to fly this year, and China boasts the aircraft as its own intellectual property.

The jumbo aircraft project was approved by the Chinese State Council last February. The goal was to make the country capable of producing aircraft with a takeoff weight greater than 100 tons and more than

150 seats. Currently, the nations capable of doing this are the United States, Russia, France, Germany, Britain, and Spain, with Boeing and Airbus swallowing up most of the market.

While also claiming their aircraft as intellectual property, China is open to international cooperation during the project, which would mean that some key components, such as engines, would be provided by outside nations.

China began building a

jumbo aircraft in the 1970s, only two years after Airbus began their production, but the project was set aside. By 2030, China is forecast to be the world's second largest aviation market after the United States, having experienced a 95 percent growth during only the past five years. It is predicted that the nation needs 1,600 new air-



craft by 2020, worth a total of at least.

Final Hubble service mission scheduled

Andrew Zaback
Sports Editor

NASA has recently released a detailed schedule of the final servicing mission for the Hubble Telescope. In orbit since 1990, the Hubble has made ground breaking discoveries about our galaxy and universe. The information sent to NASA, for example helped scientists accurately estimate the age of our universe to about 14 billion years old. This service mission has been attempted once before, but due to the Columbia Tragedy was postponed indefinitely. Recently, NASA has set a date and detailed the mission to take place in August of 2008. The mission will take place over

11 days and consist of five spacewalks.

Commanded by Scott D. Altman, STS-125 will focus on three repair aspects of the space telescope. The first of which is replacement of two battery modules and the installation of a new wide angle photo lens. The second phase of repairs will be the installation of refurbished equipment. This equipment includes a Fine Guidance Sensor, three Rate Sensor Units with gyros and a new sensor called Cosmic Origins Spectrograph. These pieces of equipment will help NASA researchers on Earth better control the orbiting observatory.

The final repair aspect will be the replacement of any other broken parts not foreseen by

mission planners. All of these components will be housed in special crates installed in Space Shuttle Atlantis's cargo bay for this flight. Once all repairs and spacewalks are completed the shuttle will perform a diagnostic on the Hubble to endure full functionality and prepare for the return to Earth.

After this mission is complete, the telescope will eventually become dead in space leading to a decaying orbit causing it to crash into the ocean. Once this happens, a new telescope will be put into orbit, the James Webb Space Telescope. It will study objects from the early galaxies that formed our universe helping scientists understand further how the universe was formed and created.



PHOTO COURTESY NASA.GOV

Atlantis tentatively cleared for launch

Bob Scheid
Chief Copy Editor

After weeks of diagnostics and testing, NASA now believes Atlantis is ready for launch preparations.

Atlantis, which was originally scheduled for launch on Dec. 13 of last year, has suffered from problems with its Engine Cut-Off (ECO) sensor in the External Tank (ET). After the return to flight, various shuttles connected to various ETs have experienced problems with the ECO sensors, which are designed to automatically shut down the main engines when nearly all the fuel is depleted. An open circuit caused the sensors to read "wet" even when there was no fuel in the tank, and flight engineers and administrators decided to postpone the launch until the problem could be found and eliminated.

SpaceflightNow.com reported last week that the problem had been tracked to a connection between the sensor and the shuttle's onboard computer. A new sensor has been soldered to correct the problem and installed on the Atlantis ET. Technicians are now reapplying the foam insulation where it had to be removed during the repairs, a process which should be completed by this Thursday.

Tests with the new sensor have been successful so far, and barring any major problems the countdown will begin on Feb. 4.

Atlantis' main payload on STS-122 is the European-built Columbus science module. The 14-foot laboratory has racks designed to accept modular experiments, with Biolab, the European Physiology Modules Facility, and the Fluid Science Laboratory on board at launch. Also included in the first set is the European Drawer Rack and the European Transport

Carrier.

According to the NASA website, the mission should last about 12 days and will include three spacewalks by astronauts setting up Columbus and replacing nitrogen tanks and a failed gyroscope.

The lengthy delay has caused much shuffling of other launches on two continents. The space shuttle Endeavour was expected to liftoff in February to carry the Japanese Kibo logistics module and the Canadian-built Dextre robotics system to the station; that mission has been pushed back until mid-March, if all goes well. It is likely that the next several shuttle flights will be delayed as well, including Atlantis' next mission, STS-125, to repair the Hubble Space Telescope. The Russian Progress resupply ship has also been pushed up to Feb. 5 to allow the Expedition 16 crew to participate in the docking of the first European-built Jules Verne supply ship.

MESSENGER craft flies by Mercury

700 gigabytes of information recorded

Ben Cooper
Space Tech Editor

For just the second time in history, a space probe flew past Mercury last week, revealing a vast swath of never before seen surface of the innermost planet. The MESSENGER spacecraft is halfway into a six-and-a-half year journey to becoming the first ever probe to enter orbit around the tiny body in 2011.

MESSENGER, which stands for MErcury Surface, Space Environment, GEochemistry and Ranging, was launched from Cape Canaveral on Aug. 4, 2004 on a long, spiraling journey inward towards the sun. The NASA probe has been under the guidance of the Johns Hopkins University Applied Physics Laboratory (JHUAPL), located outside of Baltimore, Md., since then.

The space probe came within 124 miles of Mercury's surface at precisely 2:04 p.m. EST last Monday, snapping a total of 1,213 images during a 55-hour period approaching and receding from the planet. Approximately 22 hours later, the probe turned its antennas back towards Earth and beamed back the wealth — over 700 gigabytes — of new data. Several images were released by the space agency last week; a press conference discussing the science gained from this first flyby will be held Jan. 30. More images may be released at that time, including a possible time-lapse movie created from the images.

Only one other manmade object had ever visited Mercury before this close encounter Jan. 14. The Mariner 10 probe, launched in 1973, made three flybys of the planet in 1974 and 1975. But Mariner 10 only saw a total of 45 percent of the entire surface of Mercury; the timings of its flybys, particularly the first and second,

resulted in the same side of the planet being lit and facing the probe each time. In addition, MESSENGER's camera is far superior to that carried by Mariner 10 three decades ago.

In a statement put out by JHUAPL, MESSENGER mission scientists said "it is already clear that MESSENGER's superior camera will tell us much that could not be resolved even on the side of Mercury viewed by Mariner's vidicon camera in

the mid-1970s."

So much was anticipated before MESSENGER's flyby last week and much more will be revealed when the spacecraft becomes the first to enter its orbit on March 18, 2011.

MESSENGER will make its two other flybys of Mercury, in October of this year and then again in September of 2009. The maneuvers will actually help to slow the spacecraft's velocity in anticipation of orbital insertion.

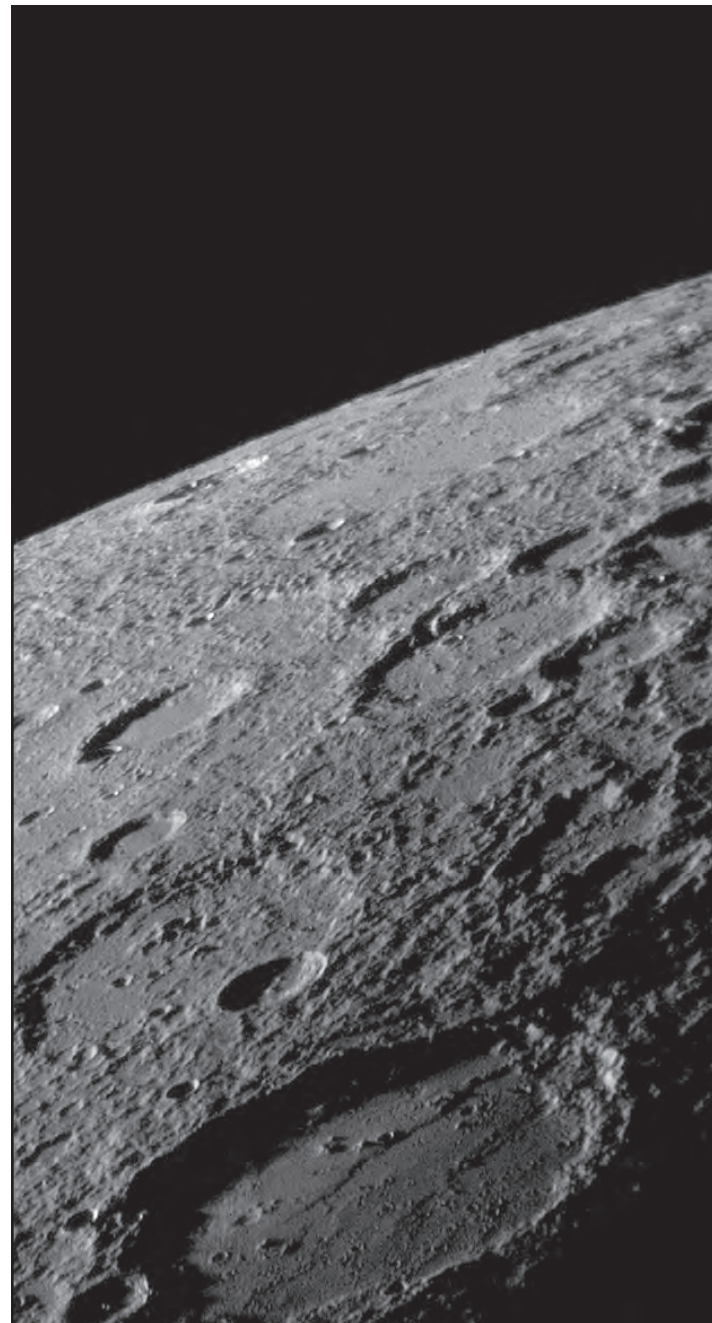


PHOTO COURTESY NASA.GOV

MERCURY'S LIMB FROM UP close, taken by NASA's MESSENGER spacecraft Jan. 14. The probe will fly by the planet three more times before settling into orbit around the innermost planet three years from now.

Upcoming Cape launches

Feb. 7
Space Shuttle Atlantis
STS-122 / ISS flight
Europe's Columbus module
Launch time: 2:45:25 p.m. EST
+/- 5 min. window

March 13
Delta 2
Next GPS sat.
Launch window: TBD

Apr. 24
Space Shuttle Discovery
Japanese main Kibo lab
Launch time 8:26 a.m. EDT
+/- 5 min. window

Tentatively March 13
Space Shuttle Endeavour
STS-123 / ISS flight
Japanese Kibo module,
Canadian robot hand Dextre
Launch time: 1:47 a.m. EDT
+/- 5 min. window

March 21
Atlas 5
ICO mobile comsat
Launch window:
5:46 - 6:26 p.m. EDT

May 15
Delta 4-Heavy
Classified NRO
Launch time: TBA

EDITED BY BEN COOPER

A Collegiate Newspaper by Students for Students.

THE AVION

Advertising

A Division of the Student Government Association Embry-Riddle Aeronautical University Daytona Beach, Florida

Want to advertise in *The Avion*?
Contact our advertising manager
at 386-226-7697 or
avion.advertising@gmail.com.

DAYTONA
Orlando Airport Shuttle
Ride 1st class

20 scheduled trips daily!

Advance Reservations Required

GRAND OPENING SPECIAL
One Way \$30 ☆ Round Trip \$55
from our office

- Brand new, luxury vehicles
- Comfortable, safe, and a friendly staff!
- Free pickup/drop off at Student Village until June 15!
- Book your trip early to guarantee seating!

For reservations & reliable service, call:
386-947-9947

www.DoShuttle.com
665 Beville Rd., S. Daytona



Airline Transport Professionals



HIRING Two-Year CFIs

ATP is always seeking CFIs with multi-engine and instrument ratings. Our nationwide system of multi-engine flying makes ATP CFI jobs among the best in the country.

As a CFI at ATP, you will:

- Work with dedicated, self-motivated students
- Fly the best-maintained multi-engine aircraft
- Always have aircraft available at your Training Center
- Build your multi-engine and total time to meet airline hiring minimums
- Earn bonuses as you help students succeed
- Meet and network with pilots of various professional flying backgrounds, including current Airline Pilots, Corporate Pilots, and Military Pilots
- Get assistance from ATP in acquiring a Regional Airline position
- Get more Airline opportunities faster

You will earn bonuses for:

- Students passing flight checks on the first attempt
- Performing certain training modules with associated bonuses
- Providing FTD and Flight Training with hourly "override" bonuses

ATP is known by Airlines across the nation for the finest quality, best trained, and most motivated pilots. Because of this, ATP invests approximately \$5000 in your Flight Proficiency to ensure you meet the highest standards that are expected of ATP.

\$3,000 monthly base PAY
+ performance bonuses

ATP is seeking two-year CFIs to provide ground and flight instruction to CFI certificate applicants at ATP's Daytona Beach, Atlanta, and Jacksonville Flight Training Centers.

QUALIFICATIONS

- 2-Year CFI with Single-Engine, Multi-Engine & Instrument Ratings
- 200+ Hours Dual Given

RESPONSIBILITIES

- Provide classroom-style ground instruction to initial CFI Certificate applicants.
- Provide flight training to each applicant, with the assistance of other instructors.
- Providing a high level of customer service to all ATP customers.

Please email your resume to: jobs@allatps.com

**WHERE COLLEGE STUDENTS
BECOME AIRLINE PILOTS**

www.ALLATPS.com
800-ALL-ATPS

A new approach to
aviation excellence.



Avia Aero Services, Inc. (Avia) is pleased to announce the arrival of our exceptional new aviation center at Flagler County airport (KXFL), conveniently located just 20 minutes north of Daytona.

While the facility is new, our name and reputation in the aviation industry span three decades. We want to be your premier choice for aircraft rental and flight training, and have taken extraordinary measures to ensure we meet your highest expectations.

We invite you to come and visit with us to learn about our programs and tour our facilities. Whether you're looking to rent or train, **Avia** is your ticket to everything general aviation has to offer.

- AIRCRAFT RENTAL
- FLIGHT TRAINING
- SIMULATOR TRAINING (www.aviaaero.com)
- AIRLINE INTERVIEW PREPARATION
- PILOT SUPPLIES

TAKE
\$30 OFF
YOUR
AIRCRAFT
CHECKOUT
(CURRENT ERAU ID REQUIRED)

DIRECTIONS

Avia's training center is located just 1 mile west of Flagler County airport on State Road 100 in the Marvin's Garden Business Center. From Daytona, take I-95 north to exit 284 (SR 100) and head west on SR100. Continue past the airport about 1 mile, and make your first left after crossing Belle Terre Pkwy.



aviation · innovation™

Marvin's Garden Business Center
4601 E Highway 100 Suite I-2
Bunnell, Florida 32110
386.586.3380 www.iflyavia.com

www.iflyavia.com

ERAU Electronics Recycling

January 30th
Flight Deck
10a.m. - 3p.m.



Bring in your used or old:

- CD's and DVD's
 - Batteries
 - Computer equipment
 - MP3 and CD players
 - Monitors and tv's
 - Speaker/AU cable and wire
 - Headphones
- or nearly anything with a circuit board.



Support the environment
and dispose of your waste
properly.

For questions on recycling or information on what you can do to help, come to the SGA Environmental Awareness Committee meetings, every Wednesday at 5 p.m. in the SGA office.



Foo Fighters rock the Amway Arena



Photo Courtesy Foo Fighters L.L.C.



Photo Courtesy Foo Fighters L.L.C.

Foo Fighters Concert



John W. Smith III
News Editor

Have you ever wondered what it would be like to be in the same room as a social/musical icon, a multi-platinum artist, a multi-grammy winner, and breathtaking music? On Jan. 17, the Amway Arena in Orlando had all that. Making their second stop on their first American tour in three years were the Foo Fighters.

Dave Grohl and company wasted no time getting on stage at 10 p.m. after Against Me and Jimmy Eat World opened and ensured that the

crowd knew they would be going for a while that night. They opened with the second track off their new album "Let it Die", and it really broke the crowd in as they prepared to play the rest of their two and

“*Our shows finally sell out after we get a triangle player.*”

-Dave Grohl

a half hour set. Accompanying the band on songs like "The Pretender," "My Hero," and "Skin and Bones" were three extra musicians: a violinist/cellist, a percussionist, and a

pianist. The extra musicians provided a bigger depth for the band and supplied Grohl with a chance to crack some jokes, saying, "after six records and 10 years of touring, our shows finally sell out after we get a triangle player."

Throughout the first hour of the set the band performed "DOA," "Times Like These," and "Long Road to Ruin." Sandwiched in between those songs was a Taylor Hawkins drum solo that brought the sold-out 5,000-seat arena to an awe. But what put the crowd over the top was when Grohl came from stage left with an acoustic guitar and began walking down the cat walk to another stage that was falling from the ceiling. Falling from what seemed to be the scoreboard was another complete stage with four microphones, drums, piano and percussion.

The Foo Fighters took about 45 minutes to give an acoustic set that gave a new meaning to the word "acoustic" with songs like "But, Honestly," "Cold Day in the Sun," and "Marigold."

One of the high points of the night came during the acoustic set which was a triangle solo performed by the percussionist which was not only impressive but hilarious. When drummer Taylor Hawkins, guitarist Chris Shiflett, and bassist Nate Mendel began walking back to the main stage and got in place you could tell there was something big coming, and indeed there was. Grohl soon grabbed an electric guitar and began playing "Everlong" on the acoustic stage, and about halfway through the song began running back across the cat-

walk to the main stage as the band kicked in the song.

There wasn't a whole lot left to play after the acoustic set besides "Learn to Fly", and "All My Life," which ended the show; however the crowd wanted more, and they got just that. During the screaming for

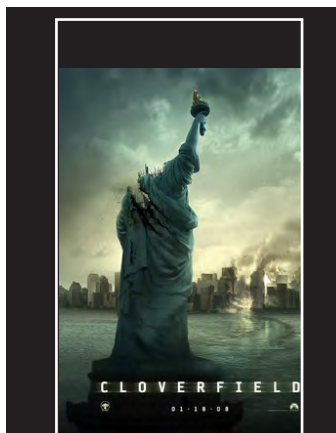
“*The crowd erupted in a way not humanly possible.*”

-John Smith

more songs, Grohl appeared on all four video screens hang-

ing above the stage smoking a cigarette and drinking a beer with his hand on his ear asking for more cheering. Hawkins soon appeared next to Grohl smoking a cigarette in his nose as he put up one finger, then two, then three, and when it seemed the crowd couldn't get any louder he held up 10 fingers as the crowd erupted in a way not humanly possible. As the Foo Fighters ran back out on stage for their encore the crowd was itching for anything and everything as long as the Foo Fighters performed. Among their encore were the songs "Generator," a cover song and their Grammy hit "Best of You." Completely satisfied, the Foo Fighters left the stage with a bow and kisses, as they were drained as was the crowd.

'Cloverfield,' monster of a film



Cloverfield



William Sohl

Entertainment Editor

When I set out to review "Cloverfield" I was expecting a movie bad enough to be funny. I expected shallow and overly dramatic characters practically running into the jaws of a monster. What I got was something entirely different.

The movie starts out with the kind of young adult drama you'd expect from MTV. It's humorous, engaging and goes

on just long enough to lull you into letting your guard down for the monster. Then with an earthshaking force, the monster announces its arrival and the panic sets in. The shock, confusion and barely controlled fear are palpable throughout the rest of the movie.

The plot is straightforward. Save the girl and get the hell out before Manhattan becomes a bombing range. But along the way we see the characters go through several harrowing events. Deaths of friends and family they have to be pushed to the side. Scared relatives are fighting spotty cell service to get little bits of information. The monster and its spawn are always a looming threat. And even the city itself gets turned into an obstacle course of destruction. The characters' actions and reactions were spot on. They never struck me as overdone or out of place. In the end, this made it much more engaging than any other monster movie I've seen.

The filming style really helped me to suspend my disbelief. I never expected to say this, but finally a movie has made the "Blair Witch" filming techniques into viable tools for big budget productions. I was especially impressed with the way the special effects were integrated with the lower reso-

lution of the camera. The nausea factor is somewhat reduced but I did hear a few complaints of motion sickness during the running scenes. Despite the camera apparently having the stabilizer of a Segway and being made of Nalgene plastic, it gives a more immediate feeling.

The monster itself is excellently designed and used. Without going into detail, it's terrifying with both unique and familiar aspects to it that are sure to please. For most of the movie, all you get are glimpses and pieces of puzzle. You get some good views of the adolescent monsters early on but the large one manages to stay relatively anonymous. A lot of rumbles in the distance and far off shots of buildings being annihilated are the most frequent appearances of the creature. It is only at the end that the audience gets a truly remarkable view of the beast. Overall this limited view adds to the confusion, fear and wonder of the movie.

"Cloverfield" has definitely reinvented the monster movie in a way I never expected to see. Far from the cheesy "Godzilla" or "Dragon Wars", it offers an immersing story with more than enough excitement to go around.

Grace Potter: a must see band

Grace Potter Concert



Toby Bucsescu
Guest Reporter

Do you know that feeling of total satisfaction that on the rarest of occasions accompanies your morning shower? It's that feeling that forces you to wake as your alarm first sounds, rather than hitting snooze because you can't recollect the past night's adventures when you're asleep. It is this satisfaction that I now feel as I write this article. For some time now I have known of Grace Potter and the Nocturnals (GPN). First seduced by a flashy organ lick (played by none other than Potter herself) I heard on the internet, my relationship with this powerhouse group has grown steadily until this past weekend. I had the great fortune of seeing Grace Potter and the Nocturnals perform for the first time down in St. Petersburg, at an incredible outdoor venue called Jannus Landing. Opening for Galactic (who, by the way, also tore the house down), Potter's prowess as performer overwhelmed you immediately. With a voice the likes of which you have only heard but a few times before, she commanded the stage like the best before her. Almost instantly the thousand-plus crowd was hers. Having come to see Galactic, most people seemed to have never heard of her.

A product of Vermont, the band's soulful sound blends well with its influences from rock, blues, jazz, and country. Releasing their first album, *Original Soul*, in 2004, the band found great support close to home. But the phenomenon could not be contained. 2005 brought about the next project, *Nothing But The Water*. Their name was growing, as were the names of those who the band would open for. They soon found themselves sharing the stage with the likes of Dave Matthews, Trey Anastasio and Gov't Mule. GPN's most recent work came in the summer of '07. Produced under Hollywood records, the album



Photo Courtesy Taylor Crothers and m4a311

clearly demonstrates the band's growth, and more particularly Potter's growth as a lyricist. The songs became more personal and more meaningful. There seems to be no stopping this group's ascent to stardom.

GPN's performance at Jannus Landing that evening was mind blowing at the least. But just to make sure everyone knew she meant business, Potter returned to the stage during Galactic's set. Within a few moments, emerging from the wall of

“*That evening was mind blowing at the least.*”

-Toby Bucsescu

sound came the unmistakable "Whole Lotta Love". Belting it out in a truly original manner, Potter brought me to that state of total satisfaction. But, luckily for me, the story goes on. I would soon find an even greater satisfaction, seemingly unattainable in any ordinary weekend.

Sunday morning, I decided to check when I would next be able to catch GPN, whether it would be in NY when I go home, or the next time

they are in the south. There it read, "Monday, Jan 14th 8 P.M. Jack Rabbits, Jacksonville FL." Tickets would only be \$10. Without any hesitation I placed the order. The next day, not knowing what to expect, I got to the venue as the doors opened to ensure a good place near the stage. The proverbial "Hole in the Ground," Jack Rabbits is located on the outskirts of Jacksonville. After finding a parking spot (which was not hard at all), I joined the nearly 10 others in the small but comfy room. By my guess, there were no more than 50 people there when GPN finally took the stage. Worried the band might be discouraged by the low turnout, I thought the band might tone down the show, maybe do a more acoustic set; Shows how little I know. Standing a mere 10 feet from the band, I basically got a private GPN show for \$10. And let me tell you, they did not turn down at all. Realizing how fortunate I was, I enjoyed every minute of the show. Talking with the band afterwards showed just how down to earth they are and confirmed my suspicions that these guys are in it for the fun. If there is a formula to putting on a great live show, then Grace Potter and the Nocturnals have discovered and mastered it. Their live shows are definitely worth any sort of travel and are a must see for any classic rock lover.

Cuban music at the museum

Havana Nights



Stefanie Thaxton

Campus News Editor

The party was on at the Museum of Arts and Sciences (MoAS) this past Saturday night to kick off the beginning of "Cuba Week" in honor of the national hero Jose Marti's birthday. The museum has been celebrating the 50th anniversary of The Cuban Foundation Museum, which houses over 200 pieces donated by former Cuban President Fulgencio Batista and his wife

Marta in 1957.

After a brief introduction to the "Great Masters of Cuban Art 1800 to 1958" exhibit by one of the sponsoring private collectors, the doors opened and guests were transported to Havana for a night. An authentic cigar bar was set-up, manned by Dionisio, a native Cuban who had been hand-rolling cigars for 50 years, along with Miguel, his translator. Past the mojitos and Cuba Libre's was the buffet line piled high with things like lemon-lime pork tenderloin, chorizo-stuffed mushrooms and fried plantains. Tasty treats such as Tres Leche and Dulce de Leche cakes were offered for dessert along with "Cuban Coffee," which is just an espresso with sugar. Entertainment consisted

of a 12-piece band, and if guests weren't brave enough to get out on the dance floor, the exhibit halls were open for touring.

All this week, MoAS will be celebrating Cuban culture and history. Documentaries and other short films such as "The Lost City" and "The Buena Vista Club" will be shown in the Root Auditorium, along with book signings and lectures by respected professors of art and history from the University of Central Florida and Florida International University. The exhibition will run until April 27th, and a complete list of events and times can be found at www.moas.org. Right now, Embry-Riddle students can enjoy free admission.

HOUSING / ROOMMATES

\$1125.00 3 Bedroom, 2 Bath
3 Bedroom, 2 bath, spacious living room, dining room combination, Kitchen with lots of cabinets, Stove, Refrigerator, and dishwasher. New paint and carpet. Available immediately. First and Security. 60 E Bayshore, Port Orange, 386 334 2173 - 386 334 2175 cuccheror@wildblue.net

Room for Rent \$400
Room available late December in 3/2 townhouse in Ormond w/2 females. \$400/month w/\$200 deposit and utilities (basic phone/electric/H2O/internet/directv) We have a w/d, dishwasher, 2 car garage, wireless, deck, fireplace. Someone clean & responsible please. Email stacylucas@gmail.com

Female Roommate Wanted
bedroom with private bath ROOM FOR RENT IN NICE CONDO 3 Miles from Embry Riddle, Serious student/working professional preferred. Individual full bath, Club House, Tennis Courts, screened porch, Gym, Pool, W/D and Picnic area. \$475. Available now. Contact 813-205-2510.

House with a Pool
Private room available in a 4/2 house 5 minutes from campus. A great house for the spring semester. It has 2 living rooms, laundry room, a large kitchen, screened in porch, and a pool. Six month lease and move in ready. Rent \$385/mo plus portion of utilities. Call Jamie 305-849-2152

4/2 House for Rent
Spacious, 4 Bedroom, 2 Bath, Family Room, Living Room, Dining Room, 2 car garage, Security System, irrigation system, lots of tile and berber carpet. Approx. 8 miles from Embry Riddle. Available immediately, First and Security. 386 334 2173 or 386 334 2175

HOUSING / ROOMMATES

Room for Rent \$375
Looking for room mate to help split the cost of, 5bed 2bath house, 5 miles from ERAU, walking distance to beach (no really we mean it). Rent \$375.00 plus 1/4th utilities(cable, internet, water,electricity).Kitchenifyou cook, microwave if you don't, washer & dryer in garage, huge back yard so plenty of parking. For info call Russ 972-655-4647

House for Rent
Two miles from ERAU - two bedrooms, large kitchen, large living room, closed in patio, laundry room - \$450 per month. Call 8am to 5pm weekdays. (386)257-4322

\$300 Room for Rent
Bedroom to rent for \$300 per month on Beach Street in Daytona. Nice quiet complex with pool. Cable, WiFi, washer/dryer included. Available December 12. Call 386-255-0330.

Furnished Condo On River
A Very Nicely Fully Furnished 2BR 2BA Condo. Pool area, Fishing Dock, Reserved Parking, Free Cable and Water, a River View, and Totally Equipped (Clean Linens, Towels, and Dishes are even included!!) \$1,000/mon. If interested please contact Bob at (607)373-9078 or (386)682-4244mentionunit217

Townhouse for Rent
2 bedroom, 2.5 bath, nice and peaceful community in Port Orange, access to Pool and Tennis court. Private backyard, energy efficient appliances. Rent \$900/month. Pets allowed. Call Maria Lewis 386-673-7001, ext 306.

HOUSING / ROOMMATES

Room for Rent Beachside
Fully furnished room for rent in a nice house beachside. \$500/mo includes utilities, full house privileges, and use of w/d, cable, dishes, wireless, big screen, PS3, all the toys. Walk to the beach, bars, and shops. We even have sheets and towels. No drugs or smoking. Call 954-328-3660

Room available
Move in ready for the spring semester. Looking for a roommate to share a new 4/2 close to campus. Amenities include: a pool, two living rooms, large kitchen, walk in pantry, laundry room, screened in porch, and a two car garage. Rent is \$385/month plus a portion of the utilities for a private room. Please contact Jamie at 305-849-2152.

Bungalows of Port Orange
Are you tired of sharing your space? If so read on... Located in a secluded area yet close to everything. Located within 5 miles of the school. Newly remodeled 1 bedroom 1 bath with possible den. Several condos available only \$629.00 per month, free cable for 6 months. On-site laundry facility, an absolute must see. Call Debi at 386-761-7368 for appointment. bungalowsportorange.com

Bedroom with private bath
3 miles from Embry-Riddle, Serious student/working professional preferred. Individual full bath, Club House, Tennis Courts, screened porch, Gym, Pool, W/D and Picnic area. \$475. Available now. Contact 813-205-2510.

Room for Rent
Room for rent 3 miles from ERAU. \$600 per month includes utilities. Call Amber at 386-846-6914.

HOUSING / ROOMMATES

Female student to share home
House in Daytona Beach near Embry Riddle. I provide a furnished room with a full bath; full house privileges; w/d; home utilities; internet access. \$450 per month plus deposit. Call Lynda at 386-383-8621.

\$790 Moves You In!
Share 4 bedroom 2 bath home in Fairway Estates (5 minutes from ERAU)...Master Bedroom with Own Bath Available...Utilities Split 4 ways...Washer/Dryer - Lawn Service - No Long Term Lease Necessary! Call Kenny at 386-235-1910

Great Space Available!
Bedroom, bath, large living room. Fully furnished separate entrance driveway parking in a nice private home. Just steps from Granada bridge oceanside, close to everything. Share a nice kitchen. Available Feb 1. 450 plus deposit includes all utilities and basic cable 386 295 3577

Roommate needed ASAP
Roommate needed ASAP, 5-7 minutes away from campus, private room and bathroom, big kitchen, washer and dryer in apartment,\$425plushalfofelectric, cable and water included. No deposit and no rent for September! Please call Jolly Kapoorat(386)341-9149ASAP

Port Orange
Spacious 3 Bedroom, 2 Bath, Great Room, New Paint & Carpet, convenient location, available immediately, First & Security, No pets, 386 334 2173 - 386 334 2175

HOUSING / ROOMMATES

Furnished or Unfurnished
2br/2ba\$950.00month(2persons can share) Utilities Included. Clubhouse, pool,exercise & billiards room,Internet room, cable, 24hr security, Very close to school & beach, walking distance to grocery,movies,eateries nonsmokers,nopets.CallMargie 770-365-3856 or 678-513-1054

Master Bedroom Available
Looking to rent 1 bedroom, in a home, Furnished if needed. Serious student/working professional preferred, Located in a quiet neighborhood only 2 minutes from ERAU. Occupants enjoy full house privileges for only \$450.00 monthly, plus security. Utilities are all included. Available on Nov 27, 2007

\$1,450.00 - 4 Bedroom, 2 bath
Nearly new 4 bedroom, 2 bath, Living Room, Dining Room, Kitchen with breakfast nook, Utility Room, 2 Car Garage, irrigation system, and security system. Lots of tile, berber carpet and New Paint. House backs up to small lake/pond. 8 to 10 miles from Embry Riddle. Close to shopping. Available immediately. First and Security. 386 334 2173 - 386 334 2175. cuccheror@wildblue.net for pictures.

Condo for Rent, or Sale
2 bedroom, 1.5 bath, 1,040 sq ft. Only 5 miles from ERAU Community pool & exercise roomWith: Carpet/ceramic tile, washer/dryer, exterior utility room, dishwasher, stove, & fridge. Available unfurnished or partially furnished. Rent = \$900.00/ mo. (some utilities included). Call Dan or Val, (386)749-0450

AUTOMOTIVE

Pick Up- RAM 1500 SLT
Fully loaded! Quad Cab, V8, cold A/C, power windows/locks, premium sound, tow package, black and chrome, 1998 model. EXCELLENT condition. \$5600. Below book price. 386-679-5919.

2002 Honda Civic LX
For sale 2002 Honda Civic LX, 93,000 miles, 1.7L engine, Manual transmission, Front airbags, power locks/windows, keyless entry, A/C, CD player, NEW tires and timing belt, tan cloth interior, EPA mileage 30/38. Asking price \$6,900. Call 386-846-8340.

MISCELLANEOUS

DVD, CD player
Toshiba DVD player- good condition \$ 50. Pioneer 25 cd-changer, cassette player with speakers- good condition \$75. call 386-334-2229

Bed - New Mattress and box
Wood and iron bed with Queen mattress set. All Brand New, in box. Must move, can deliver. Sell all for \$299. (386)334-7611

New Queen Pillowtop
Mattress and Box. Name brand and still in plastic. can deliver. SELL \$111 call 386-334-7611

Buying? Selling? Place your ad with us today!
www.avionnewspaper.com

Why fly with M.C. Flyers? Think about it...

George & Lauren McCallman have been operating M.C. Flyers out of Spruce Creek for the past 16 years, with a safe and reliable record. We offer friendly, flexible, & personal service - treating you like family. Our aircraft are maintained to the highest standards, ensuring that you have a safe & reliable aircraft ready when you want it! Maintenance is often preformed overnight, so you don't have to wait for an airplane to fly. Our rates are straightforward, with no gimmicks...

Cessna 172 rental as low as **\$80/hr** (10 hr. block). Freshly overhauled engine, and **new IFR GPS!**
Piper Twin Geronimo rental as low as **\$145/hr** (10 hr. block).

High-quality instruction is available at **\$25/hr single** and **\$30/hr multi** for ERAU students from alumnus John Vaillant. Or, bring your own instructor. Freelance instructors are welcome, too! Why spend your time taxiing when you can fly with us? Ask around - our customers recommend us for our commitment to personal service, flexibility, & individual needs!

Call today for a no-pressure personal tour!
(386) 767-9464 www.mcflyers.com
John Vaillant: (386) 523-7270 vaillb75@hotmail.com

Need a place to live?

Find your new home in the classifieds.

Listen to Your Campus Radio
99.1 Eagles FM

Embry - Riddle Campus Radio Station
3 PM to 3 AM Every Weekday
on 99.1 FM
24/7 Webstream only on
www.eaglesFM.com

EMBRY RIDDLE AERONAUTICAL SCIENCE AND FLIGHT DEPARTMENTS WELCOME ALL NEW AND RETURNING STUDENTS



Full Fleet of Diamond DA 42 Twinstars This Spring



The Flight Department Continues to Look For The Best Flight Instructors

Our total compensation and employment program for our Instructor Pilots is the best in the industry. Embry-Riddle offers a minimum of 27 paid/accrued leave days annually, the best wage package, and two comprehensive health insurance programs.

All full-time instructors (and spouses or domestic partners) are immediately eligible for 100% free tuition for both undergraduate and graduate courses, and 100% free tuition for undergraduate courses for dependent children, up to age 26.

Embry-Riddle will contribute 5% of the instructor's earnings into one of the two retirement programs. We will also match additional contributions up to 3%. These funds are fully vested after only one year of service. Full pay for departmental meetings and directed non-flight activities. 100% uniform allowance.

Choose from Several Sign-On Bonuses:

- \$3,500 Sign-On Bonus
- \$2,500 Sign-On Bonus Plus CRJ Interview Preparation course

Choose from Several Sign-On Bonuses:

- Multi Engine Instructor Rating (MEI) Plus CRJ Interview Preparation course
- Training Center Evaluator (TCE) Pay Structure

And We Have The Best Students In Collegiate Aviation!!

Embry-Riddle is the place for you, if

- you are a dedicated professional who loves to teach and share the art of flying with new students...*
- you are looking for an employer with excellent airline placement records; more than 60 of our Instructor Pilots havemoved on to airline jobs in the last year...*
- you are a flight instructor who wants to be part of the world's best aeronautical university...*

"NEW THIS YEAR"

Expanded Student/Instructor rental Policy to include twin engine rental.

Only all Glass Cockpit Cessna 172 Fleet in Collegiate Aviation



All Glass Cessna Fleet



New Rental Policy for Students/Instructors

**In the Past 12 Months, The Flight Dept Sent Over 60 Flight Instructors to the Airlines!!!
The ERAU Flight Department is the Best Place to Get Your Airline Job!**