

1-29-1992

## Avion 1992-01-29 (A)

Embry-Riddle Aeronautical University

Follow this and additional works at: <https://commons.erau.edu/avion>

---

This Book is brought to you for free and open access by the Newspapers at Scholarly Commons. It has been accepted for inclusion in Avion by an authorized administrator of Scholarly Commons. For more information, please contact [commons@erau.edu](mailto:commons@erau.edu).

# THE AVION

An award-winning newspaper by students for students

## Flight team faces budget crunch

by Eric Sarnowski  
Campus News Reporter

On January 21, the Precision Flight Team received some shocking and disappointing news. The budget was being cut and the Flight Team was amongst those that would be hit with changes. To make matters worse, this was all part of a plan to make the PFT number one in the nation.

In November of 1991, President Sliwa made a challenge to the alumni. His challenge was for the Alumni Chapters to gradually take over the funding of the Flight Team. His hopes were that as the alumni donated more funds, the University would be able to gradually lower their funding. President Sliwa asked the alumni and the coaches of the Flight team to take a look at what they had and to see where potential cutbacks, of approximately 10 percent, could be made.

President Sliwa has denied that the budget for the Flight Team is

being cut, but numerous members of the flight have said that they were told in a team meeting that the funds would be lowered. Most of the members are still in the dark about their future. Flight Team President Keith Plumb said that he did not know of the possible ramifications if the budget was in fact cut, but "if the need for changes is there, they will be made."

The past flight team budget set aside \$88,000 for the flight teams at both the Daytona Beach and Prescott campuses. Members of the flight team said that the new budget would only allow \$12,000. This cut will eliminate the extras and pay strictly for the aircraft and traveling costs to and from competitions.

This puts a serious crimp in the Flight Team's style, since in the past all costs were paid for by the University. Former Head Coach Mike Wiggins discussed the ideas scaling back the practices and/or allowing the team to rent the aircraft

for the same rate as is charged to the instructor. "We are also considering the idea of cutting back on the time the instructors spend teaching the team their ground event skills. By having the senior members of the team teach the junior members their Scan and Aircraft\* Recognition, we can cut down on the amount of money paid to the instructors for their time. This would then be supplemented by weekly meetings with the instructors to make sure all the students questions were being answered."

In the same aspect, when the Flight Team travels to a competition, they usually take 16 students and four or five advisors, this number could possibly be cut to 12 to 14 students and only two advisors.

While President Sliwa admits that this change could hurt the Flight Team, he is also quick to state that the alumni have "their best people working on the project." President Sliwa has stressed the fact that the

"key to success is the ability to focus." At this time the Flight Team is the center of attention; after this it is up in the air as to who will be next on the list.

Money that is being saved by the University will stay in the University, Sliwa said that. "It is not unlikely that some of the money would be put toward scholarships and possibly toward other programs within the school."

While there is still some confusion as to what is really going on, there is one thing that the Team and Administration both agree on, the Team must win the national competition in April. Everyone involved is hoping that a win would cause the school to gain national recognition, thus possibly making the alumni more generous with their donations. However, regardless of the outcome the Flight Team will not be abandoned as some of the members are likely to think.

## Cessna's old problem is a recurring nightmare

by Lawrence L. Knutson  
Associated Press Writer

A defective engine part in certain Cessna aircraft has caused a long series of fatal and non-fatal accidents and should be quickly replaced with a redesigned part, federal safety officials said on Friday.

The National Transportation Safety Board, in an urgent recommendation, asked the Federal Aviation Administration to quickly issue an airworthiness directive ordering such a change.

The board has considered difficulties with the part in question to be a safety problem for nearly 30 years and has issued a number of recommendations in an effort to deal with it.

The safety board said its latest recommendation rises out of its investigation of an accident at the

Dupage County Airport at West Chicago, Ill., last Sept. 21.

In that accident, a Cessna Model 172-P experienced a loss of engine power shortly after takeoff and crashed into a light pole and a semi-trailer truck while attempting an emergency landing.

The pilot and a passenger were killed and the aircraft was destroyed.

The safety board said it has determined that the power loss occurred when a part of the engine's carburetor broke free from its housing and was sucked into the engine intake manifold, lodging between an intake valve and the valve seat.

The part, known as a two-piece venturi, was installed in a Marvel-Schebler carburetor, Model MA-4SPA. The venturi is the part of the carburetor assembly in which fuel and air are mixed.

The part in question has a long history of service difficulties, often resulting in power loss or engine roughness, the safety board said.

The FAA first addressed the problem in 1963, warning that the venturi may break free from its housing causing "erratic engine operation or complete engine stoppage."

It ordered the installation of a one-piece venturi but only on one of several models of the carburetor.

The safety board said that the series of accidents involving the suspect part continued, prompting it to urge the FAA in 1985 to direct the manufacturer to design a replacement one-piece casting of the carburetor part.

Such a part was developed but the board said the FAA declined to issue an order replacing the older two-piece models.

"We were after the FAA to do it and we made this recommendation," said Alan Pollock, a spokesman for the safety board. "They decided not to do it and now we're back again." The safety board can make recommendations but has no power to enforce them.

By 1985, the board said, its investigators were aware of "26 service difficulty reports, seven accidents and one incident involving loose or missing two-piece venturis."

Since then, it said, there have been two additional accidents, including the fatal crash at West Chicago.

The safety board said that the Precision Automotive Corp., the current manufacturer of the carburetor, issued a service bulletin in 1990 providing for the replacement of the old  
*see Carburetor page A8*



Cold blastoff...

The Space Shuttle *Discovery* lifts off from launch pad 39-A last Wednesday morning. The seven-person international crew includes a German scientist and the first female Canadian astronaut.

*Discovery* lifted off on a 57-degree inclination, one of the highest ever, and is now orbiting 185 miles above the Earth.

The crew has conserved enough water and power to extend the mission by one day.

The shuttle is to land at Edwards Air Force Base on Thursday at 11:06 a.m., weather permitting.



## Lacrosse team disappoints in big game against Florida State

by Grant Bever  
Sports Editor

The Embry-Riddle lacrosse team hosted the Florida State Seminoles on January 25 in a game that exemplifies lacrosse.

The game was destined to be a tough one. ERAU was tied with Florida State for first place and this game would dictate the path each team would take to the conference playoffs in April.

Unfortunately, the Eagles lost by four, 13-17. Even though the score suggests a comfortable lead for Florida State, it is not indicative of the game.

It was a fast action, fast paced game that swapped leaders more than a few times.

This was the match the Eagles had been waiting for. They had lost a heartbreaker in the fall (also by four), and they worked hard to avoid a repeat.

To anyone who watched the game, this was obvious. A win against the Seminoles would have guaranteed a favorable play-off schedule. As it stands now, the road to the top may be just a little bumpier. The team finished second within the Southeast league last year, and

has a good shot at the title again this year.

The Eagles had faced FSU before, so they knew what to expect. The game plan was to keep the Seminoles from feeding the ball to their attackers.

This plan sounds pretty simple, but in the fast moving game of lacrosse, it can get complicated. The team did an excellent job of sticking with the plan.

In fact it took away a lot of power from the Seminoles' offensive game. The Seminoles' coach even commented on the effectiveness of this plan.

The Eagles learned a lot from their last confrontation, however, the Seminoles had three superb players who were tough all-around.

The Seminoles managed to score first, but the Eagles quickly answered when Chris "Shorty" Lind fed a pass to Jason Whitaker for ERAU's first goal of the game. Jason was able to tally up five more goals this game, along with two assists.

Scott Clark took some sweet shots and scored four for the game and also had two assists. Will Langmann had an assist from Craig Bently for his only score of the game. Craig also scored an unassisted goal late in the second quarter. Zach Glenister also scored on a long assist from Bill Rier.

The Eagles were hurt by penalties in this game. FSU was able to capitalize whenever they were in a man up situation.

The ERAU Eagles are now tied with Jacksonville for second place, with a 6-2 record. FSU now takes the lead with a record of 7-1.

Next week the Eagles will face-off against the University of Florida. This game will be played away, and promises to be just as exciting.

Anyone interested in attending the game, and needs a ride to and from the game, only needs to meet the team in parking lot "M" in front of the A-building at 9:30 a.m. on Saturday, February 1. Hope to see you there!

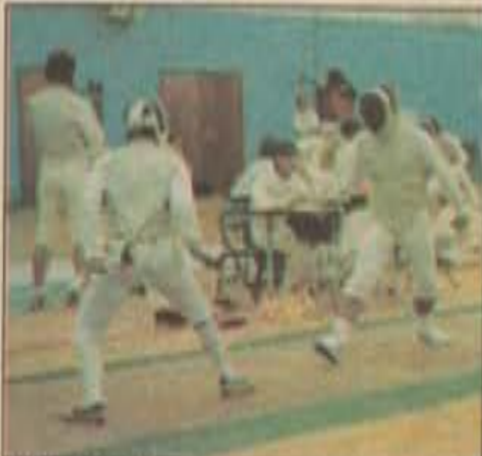
**Scott Clark took some sweet shots and scored four for the game and also had two assists.**

### Up in the air...

The Eagles lost a close lacrosse game against FSU which puts them in second place behind FSU and ties them with Jacksonville University.

### Inside this week...

Aeronautica .....	B4
Campus News .....	A3
Classifieds .....	B8
Clubs .....	B5
Comics .....	B6
Diversions .....	A7
National News .....	A8
Notices .....	B7
Opinions .....	A2
Space Technology .....	B1
Sports .....	A6
World View .....	B2



### Go team...

The ERAU Fencing Club competed for the first time as a team.  
*See story in Sports, page A6.*

### News in brief...

#### Scribner to speak tonight

Kim Scribner will present a slide show and speak about his experiences in aviation tonight. It will begin at 8:30 p.m. in the Student Center. Scribner, a former Pan Am captain, is a Trustee Emeritus of Embry-Riddle. He has logged over 27,000 flight hours, in such aircraft as the DC-3, DC-4, B-707, 747, Pan Am Clipper (flying boat) and the Constellation, among numerous others.

#### DUI attorney to speak

Flem K. Whited, one of the top

four DUI attorneys in the nation, will be speaking before the Pre-Law Association on Monday, Feb. 3, at 7:00 p.m. The talk will be in room A-115.

#### Senior Class Meeting

The first senior class meeting will be Monday, February 3 at 8:00 p.m. in the John Paul Riddle Student Center.

Elections for senior class president and vice president will be held and valuable information will be given out. All seniors should try to attend.



### What's hot...

The Coliseum hosted a fashion show for those who want to be in.  
*See story in Diversions, page A10.*

THE AVION

© 1992 AVION Newspaper

Editor in Chief Keith D. Towers Jr.

Managing Editor Jon Osterholm Tami Strout

Advertising Manager Greg Naccarato

Business Manager Roland Houle

News Editor Martin Kammerman

Campus News Editor Joseph Perrino

Copy Editor Ethan Serlin

Diversions Editor Jason Simon

Production Manager Stewart Miller

Sports Editor Grant Bever

Photography Editor Rich Levy

Clubs Editor Boyd Kelly

Space Technology Editor Greg Rezendes

National News Editor Roger Harnack

Aeronautics Editor David Fekke

World View Editor Sean Le Douarin

Adviser Dr. Roger Osterholm

This week's staff: George Clark, Bill De Brauwier, Brian Gark, Brian Gross, Todd Hughes, Jennifer Johnson, Len Laughridge, Victor Miller, Josh Mussaf, Philippe Le Scao, Jason Piper, Jack Pollard, Dean Popolo, Ron Roberts, Chris Ovin-Santiago, Eric Samowski, J. Warren Stewart and John Toth.

The Opinions expressed in the Editorial Board and do not necessarily represent those of the University, the staff of The Avion or the members of the student body.

Letters to the Editor

Do you know me??

Aaron Gee Box 5666

To the Editor: I am responding to the letter that was in the last Avion written by Mr. Grant. It concerned the Martin Luther King Jr. holiday as well as touching on other "discrimination," real or imagined. It is obvious that Mr. Grant has many prejudices and misconceptions.

I hope to address only the one that concerns me personally, I'm not sure who Mr. Grant was referring to when he said "...Struggle that allows me to sit in class beside the rich student that drives that Maserati we've all seen in the parking lot." There are actually two Maseratis on campus, and I own one of them. I assume he is referring to me.

You will be surprised to learn the price I paid. It is obviously less than was implied. There are motorcycles on campus that cost more!! (and they are probably a little more reliable) One cannot even buy a new Toyota for what I paid for the Maserati. If I had bought a Toyota Tercel would you have called me rich??

You have judged me and I infer some resentment towards me; DO YOU KNOW ME?? A great man fought hard so that men would not be judged by color or religion. This idea cost him his life. Unfortunately Mr. Grant has proven that the ideas that Martin Luther King Fought AGAINST are still here.

A man should be judged by what he does and what he believes, not what he drives. Ignorance is at the root of all prejudice and stereotypes. Martin Luther King Jr. was above all a BRILLIANT man who knew his facts. People shame him by invoking his name to justify their own misconceptions and prejudices.

JUDGE ME FOR WHO I AM NOT WHO YOU THINK I AM.

This is what Martin Luther King Jr. taught, obeying this is how I honor him. Peace.

A soldier's response

To the Editor:

I am writing in response to a letter written by Mr. Steve Garvey. It seems that Mr. Garvey has a complete misunderstanding about the Gulf War, and insulting an American Soldier is no way to express one's opinion.

I, Mr. Editor, am a Gulf War Veteran. I served with the 1st Armoured Division in the Middle East. There is no one in the world that didn't want that war over with more than those who had to fight it. Many Americans died over in the Middle East. I know, I was on the front line, and do I wonder if what happened was worth those mens life, every day of my life. I couldn't get it out of my head if I wanted to. I know one thing, every man and woman who went over there is a hero. They left their homes, families, loved ones, jobs and schools to fight in a far away land. For what, you ask? Because they believe in the American way, not just for us but for everybody in the world.

The Persian Gulf war was not about just oil. It had to do with defending a oppressed people, saving a country, which is our ally, against certain destruction. If you still think it was only because of oil, then think of the reasons some other wars have been started - one man being killed (WW I), an attack on one small island (WW II), because we were bored (Indian Wars). Defending the big oil field in the world isn't too bad of a reason in any sense.

Do not launch attacks against those that had to go and fight a war. If you don't like the way something is done contact your government official. Complain to them, not to the men and women who risked everything so you could live a little - see Letters page, A8

Editorials

We can make our University safe



Joseph Perrino Campus News Editor

On this campus, epidemics tend to spread like wildfire. Right now there is an epidemic that has reached proportions unlike any I have ever seen in the four years I have attended this University. This epidemic has nothing to do with medical science. It is crime.

Since this semester started I have gotten wind of several incidences in which a student was the victim of some crime. All of these incidences have not appeared in this newspaper for one reason and one reason only. That reason is because no student came to us to tell what happened.

We cannot investigate a crime unless someone is willing to talk to us. University Security is usually difficult to get a response from when the questions involve a crime. For the most part, this is not an attempt

to cover up information. It is simply easier to say nothing to the press, then to be put into a position in which they may compromise the rights of their suspect.

This leaves the situation entirely in your hands as a student, and as a citizen of Embry-Riddle. If something is stolen, you know there is little or no chance that it will be returned. You call the police and Security to fill out a report, then hope they catch the person(s) responsible. I do not mean to cast any disparages on the investigative powers of our campus' security force, but it is highly unlikely that they will track down the responsible parties.

In the end, you're out whatever you lost and you will have to pay to replace it.

The only alternative you have left is to tell the Avion. I implore the students of this University to come forward and talk to us. As Campus News Editor I have given top priority to crime, on campus or off.

Regardless of how much some students hate Daytona and only plan

to use ERAU as a place to get a degree and get out, we are a community here.

We have to stick together to combat this problem. Crime here is not just student on student, but now outside criminals are finding this place easy picking. They know that they can wreak havoc here and everybody just turns their back and minds their own business. This kind of attitude must stop here and now. If it does not, the person who turns their back may be the next victim.

We must consider that the crimes on campus have ranged from petty larceny to grand theft auto. In this respect we have been lucky. However, this will not last if local criminals find Riddle an easy hit. Think if we want a campus in which it is unsafe for a female student to walk to the dorms from the library late at night. Worse than that, imagine this type of environment if that female student were to be parked in ERAU's virtual no man's land we call the sandlots.

The Avion can be a useful tool in fighting crime on campus. By print-

ing each and every crime that occurs, we can make not only students more aware, but Administration. Unfortunately, I believe this should shame the University into action. This is not the way all problems should be handled in the University, but it will work.

Perhaps if enough of the truth is told about this problem, the University will start providing for student protection. Instead of buying limousines equipped with car phones and hemorrhoid cushions, the University could hire more security and station them in guard houses. Of course, it would be fantastic to get some night lighting for the no man's land (sandlots) as well.

As students, all we have to do is look out for each other. If we see someone suspicious, they should be questioned or reported to security immediately. A successful crime committed in our parking lots during the day is inexcusable as far as I am concerned.

This is our campus. It is up to us to claim it for our own.

Japan, US share blame for poor relations



Joseph Cambron Data Tech Editor

Over the last few weeks, it has become clear that our relations with Japan have deteriorated to the worst they have been since the end of World War II. The President's last visit and his subsequent attempts to beg for scraps from the Japanese table pale after Japan's announcement that they would not even honor the few agreements were made.

Many economists would argue that this entire issue is moot, but the American public seems so overly concerned with it that they may elect a president based upon this one issue.

Economists argue that a trade deficit equals an investment surplus, a fundamental of trade economics. Since the dollars the Japanese cart across the Pacific are useless in a Yen denominated culture, they must be spent in the United States. Many of these dollars, in fact, are being

used to purchase United States Treasury Bonds which finance that other deficit. The interest on these bonds is, of course, paid in dollars.

Japanese companies wash in dollars may decide to cash-out their dollars in exchange for Yen via currency exchanges. This has been happening a lot lately, and the currency market has been flooded with too many dollars chasing too few Yen. The result is a nosedive in the value of the dollar. This makes imports into this country more expensive and exports to other countries cheaper. This has caused the trade deficit to narrow to about 15% of its record monthly high. The current trend could result in a trade balance in the next year or two.

The plunging dollar and the plethora of dollars floating around Japanese auto companies have resulted in a tremendous amount of plant building in the United States. These plants employ American workers and are usually built by American firms. These plants have gone a long way toward offsetting the jobs lost at GM, Ford and Chrysler.

Speaking of American auto mak-

ers, if they cannot compete they should go ahead and go out of business. Their "Japanese" competitors build many of their cars with the same American workers, the same regulations and many of the same costs. The costs they do not share are mostly in the area of labor.

GM's Saturn is a shining example of a good idea gone awry. This plant was supposed to mimic Nissan's nearby Smyrna, Tennessee plant. Nissan is successful because it used unskilled, inexpensive, local, non-union employees. These employees were trained and given enough perks so that they have rejected unionization attempts despite their lower pay.

As the building of the GM plant in Spring Hill neared completion it was clear that Saturn would share none of Nissan's advantages. Instead of using cheap, local labor, the company-under pressure-transferred unemployed UAW members from around the country to the new facility. The result has been a disaster.

Saturn is now just another carbon-copy GM division with huge labor costs despite the advertised image.

Besides that, the Tennessee government which bankrolled the plant with tax incentives and infrastructure improvements saw very few, if any, Tennesseans hired by GM. Finally, protests have been springing up in Spring Hill as residents have grown tired of the "yankee union workers" who took jobs paying twice what nearby Nissan employees receive.

Certainly the residents of Spring Hill have a different view of whether GM or Nissan deserves to live in a cutthroat auto industry.

With all these things in their favor the Japanese seem hell-bent on destroying both our economy and theirs. A trade war would jack up the prices of so many products, particularly in the area of consumer electronics.

If the Japanese could just pull their feet out of their mouths long enough to talk some sense into America, and maybe point out what they do with all the dollars they are making, then everything would be alright. We should all be glad that Japan has virtually no military. Many wars have been started over less than this.

Student Forum

The Avion asks: What is your impression of Career Day and the service it performed?



Julie Goforth Aviation Business

"Considering the recession, we did well, since there were more companies than last year."



James Hughes Aero Engineering

"I didn't think there were enough major corporations present from the engineering field."



Aminur Rahim Maintenance Mgmt

"I feel they could have made the area larger and there wasn't enough representatives to talk to everybody. Otherwise I thought it was helpful."



Rob Sauerwalt Maintenance Mgmt

"It was a great idea, unfortunately a lot of people left frustrated and disappointed."



Jeff Grenier Air Studies

"A lot of people who graduated had come to look for jobs. There were a lot of opportunities, but there were a lot more people than opportunities."



Chris Sarna Air Science

"It was a zoo!"



Illustration by Tommie Moore

# Traffic report reveals the facts about ERAU parking violations

by Eric Samowski  
Campus News Reporter

Students are always complaining about being cited for parking violations. However, students make up only 9.8 percent of all citations issued. On the other hand, the proportion of Faculty/Staff citations compared to the number of total citations is 11.1 percent. Of those 11.1 percent of citations, 48.1 percent of them were for improper parking violations. Here is a look at the Embry-Riddle Aeronautical University Parking Services Office Abridged Fall of 1991 and 1990 Reports respectively.

Four hundred thirty four violations were issued to faculty and staff for the fall 1991 semester. After explanations and appeals were granted by the parking services office, this number became 365, totaling \$7,165 in potentially collectable fines.

A total of 12 students were used by the parking services office on a part-time basis to provide enforcement service, special detail parking assistance, limited lot and roadway maintenance and office and registration support.

**Fall 1990**

The parking services office managed a total of 2647 parking spaces for the Fall 1990 semester.

A total of 6387 parking permits were sold - 4359 student permits, 1571 faculty/staff and 457 motorcycle permits were issued.

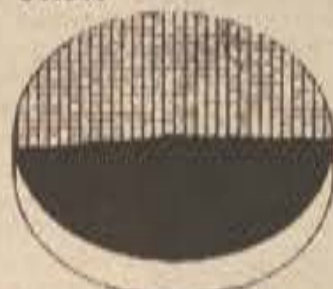
Student permit sales totaled \$48,341 for the August '90 to December '91 parking season. Employee permit sales totaled approximately \$19,040 (942 employee vehicles times \$20.00 permit fee).

A total of 2716 parking violations were issued to students for the fall 1990 semester. After appeals were granted by the parking services office, this number became 2000 citations, totaling \$25,010 in collectable fines.

Eight hundred sixty two violations were issued to faculty and staff

**PROPORTION OF FACULTY/STAFF CITATIONS FOR IMPROPER PARKING**

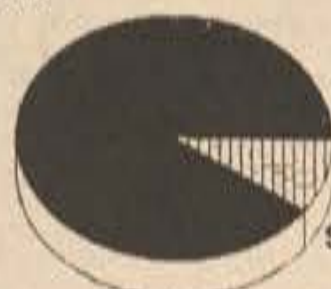
Other Staff Tickets  
51.9%



Improper Parking 48.1%

**PROPORTION OF STUDENTS CITED FOR PARKING IN FACULTY/STAFF AREAS 1990**

All Other Citations  
90.2%



Students Cited  
9.8%

**Teachers are but a small piece of the pie...**

Left. This is a graph specifying the proportions of tickets given to faculty in Fall '90. Right. Graph showing the amount of students given tickets for parking in faculty areas.

for the Fall 1990 semester. After explanations and appeals were granted by the parking services office, this number became 732, totaling \$16,739 in potentially collectable fines.

A total of 18 students were used by the parking services office on a part-time basis to provide enforcement service, special detail parking assistance, limited lot and roadway maintenance and office and registration support.

**Comparison**

The parking services office managed 130 more parking spaces in the Fall 1991 semester than in the Fall of 1990.

A total of 690 fewer parking permits were issued this year - 549 student permits, 87 faculty/staff and 54 fewer motorcycle permits.

Student permit sales totaled 2969 for the August 26 to December 12 parking season. Employee permit sales totaled approximately \$840 less.

A total of 961 fewer parking violations were issued to students for the Fall 1991 semester. After appeals were granted by the parking services office, this became 611 fewer citations, totaling \$95\*\* less in collectable fines.

Four hundred thirty eight fewer violations were issued to faculty and

campus, one can only hope the coming committee on Traffic and Safety will consider these possible solutions.

**Option A**  
Continue with the rules and regulations in the Parking and Traffic Rules, with the amendments to all sections pertaining to segregation of A and B parking stickers and parking lots. This makes all the parking lots, on and off campus, A/B lots.

**Option B**  
Address the issue of faculty/staff violations and fines, assuring payment for the violations in accordance to Section V, paragraph A,B,C,D,E and all of Section VI of the Traffic and Safety rules.

**Option C**  
Adopt the first part of Option A making all the lots A/B lots. Also, a

campus, one can only hope the coming committee on Traffic and Safety will consider these possible solutions.

**Option A**  
Continue with the rules and regulations in the Parking and Traffic Rules, with the amendments to all sections pertaining to segregation of A and B parking stickers and parking lots. This makes all the parking lots, on and off campus, A/B lots.

**Option B**  
Address the issue of faculty/staff violations and fines, assuring payment for the violations in accordance to Section V, paragraph A,B,C,D,E and all of Section VI of the Traffic and Safety rules.

**Option C**  
Adopt the first part of Option A making all the lots A/B lots. Also, a

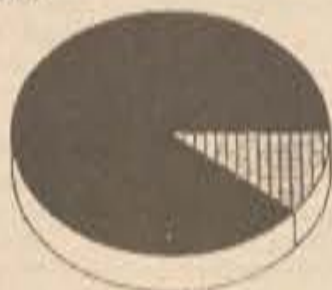
cancellation of the statement heading Section V, pertaining to the violation of traffic and safety rules by students only.

**Option C**  
Keeping the rules and regulations the same, address the issue of faculty/staff violations and fines, and further more take affirmative action with equal circumstances on the faculty/staff as the actions already being taken on students.

While these may not be the most perfect of solutions, they should, at the least, receive some consideration from the committee on Traffic and Safety. In the past three semesters the school has lost a total amount of \$34,194. As this amount rises over the next few semesters these solutions could be used as the reason for changes in the future.

**PROPORTION OF FACULTY/STAFF CITATIONS COMPARED TO NUMBER OF TOTAL CITATIONS**

All Other Citations  
88.9%



Faculty Citations  
11.1%

**Book 'em Dano...**

This graph shows the amount of faculty that are cited.

FALL 1990	AMOUNT OF CITATIONS ISSUED	AMOUNT LEFT AFTER APPEALS	MONEY TOTALS	MONEY COLLECTED	BALANCE
FACULTY	872	732	\$ 16,739	\$ 0	\$ 16,739
STUDENTS	2,716	2,000	\$ 25,010	\$ 25,010	\$ 0
TOTALS	3,588	2,732	\$ 41,749	\$ 25,010	\$ 16,739

**The buck stops here...**

This chart shows the amount of collections made of students; also, the amount uncollected from faculty in Fall '90.

## Attention Continuing Students

### Fall and Spring 1992-93 Housing Sign-Up

1992-93 Housing contracts will be available February 3 - 14 in the Housing Office, Residence Hall II, Suite 278. All contracts must include a \$150 prepayment, paid and validated at the Cashiers office. Deadline for housing sign-up is March 14. Contracts from continuing students will be randomly selected for available spaces. Contracts received after February 14 will be placed on a secondary waiting list.

1992-93 Housing fees are unchanged from current rates and are as follows:

Residence Hall I	\$860 per semester
Residence Hall II	\$860 per semester
Apartment Complex I	\$860 per semester

NOW PLAYING

The Area's Largest Selection of Aviation Titles

ENJOY FREE:

-Membership	-Popcorn
-Movie on Birthday	-New Release Magazine
-Rentals With Points	-Reservations

Not Just Movies!!!

Super Nintendo, Nintendo And VCR Rentals  
 Open 365 Days, 10AM-11PM  
 Outlet for Concerts and Sporting Events

MEGA MOVIES

"The Critics Choice"

252-3773

1500 Beville Road  
Shoppes at Beville Rd.

LARRY'S GIANT SUBS

1500 BEVILLE ROAD  
DAYTONA  
257-2200

OPEN 7 DAYS A WEEK  
MON.-THURS. 8AM-10PM  
FRI.-SAT. 8AM-11PM  
SUN. 10AM-10PM

<p>LARRY'S COUPON</p> <p style="font-size: 1.2em; font-weight: bold;">\$ .50 Off Medium Sub-ERAU</p> <p style="font-size: 0.8em;">NOT VALID WITH SUB CARD Expires 2/1/92</p>	<p>January Special</p> <p>Medium Big One, Chips, Drink, \$3.95</p>	<p>LARRY'S COUPON</p> <p style="font-size: 1.2em; font-weight: bold;">\$ 1.00 Off Large Sub-ERAU</p> <p style="font-size: 0.8em;">NOT VALID WITH SUB CARD Expires 2/1/92</p>
--	--	--

Alumni Profile

Nassau Flyers instructor discusses his experiences

by Bill De Brauwer  
Campus News Reporter

Career Day Expo gave students a chance to talk with representatives of various companies. Most of the representatives were Embry-Riddle alumni, who gave valuable advice.

One of the alumni present was John Kernaghan. A native of Franklin Square, N.Y., he graduated in August 1988 with his Bachelors of Science in Aeronautical Science.

After graduation he tried to join the Navy. Unfortunately, budget cuts forced by congress severely restricted the number of pilot applicants the Navy could accept.

In the meantime, he worked as an oil delivery person and built up some flight time. He also decided to get his Certified Flight Instructor/Instrument certificate at Nassau Flyers Inc. Upon completion he received a job as a flight instructor there and has been there ever since.

He has climbed to the position of flight manager, of which there are three such positions in the company. A flight manager is like a chief flight instructor. The reason there are three such positions is to protect against a complete loss of management, due to pilot attrition. He has approximately 2200 hours total time.

Nassau Flyers Inc., or NFI, is located at Republic Airport in East

Farmingdale, N.Y., on Long Island. The company has 35 airplanes, consisting of Cessna 152s, 172s, 182s, Piper Cruisers, Warriors, Archers, Cherokee Sixes, Senecas and Navajo Chieftains. They employ 20 to 25 full time instructors who average between 1000 to 1300 hours a year.

NFI's business mostly consists of older people interested in getting their private pilots license. The pace therefore is generally much more relaxed than one would find at Embry-Riddle.

Because more than 50 percent of his instructors come from Embry-Riddle, he has to remind them that the people that are learning to fly there are customers, not necessarily students. He usually receives about 40 resumes a month. He looks for pilots with all their certificates and ratings and have 500 hours or less. The reason for the low flight time is that he wants the instructors to stay with the company for two years before they move on in their flying career.

He also looks for pilots that have family or friends in the area. The cost of living is too high for someone to live there on a flight instructor's salary.

He also has high hopes for the future. He believes that the recession in the aviation industry has bottomed out, and that it will take an upswing around May or June.



Fly boy... Alumni, John Kernaghan, has hopes for the future.

Rumors that airlines will be hiring again in the near future has fueled this speculation. This will cause a snowball effect in the industry.

He eventually plans to go on to a commuter and then on to the airlines. He would also like to start his own business by the time he retires.

When asked what advice he could give to those that will be graduating in the near future he had this to say: "Think about what you are going to say, then say nothing and listen. I have found that most people say things that they don't want to, and this will usually backfire."

Call Career Center for more information about Nassau Flyers.

Pan Am pilot to speak to students

DAYTONA BEACH, FL(PR) Kimball J. Scribner, former chief pilot of Pan American World Airways and Trustee Emeritus of Embry-Riddle Aeronautical University, will give a slide presentation on "The Golden Age of Aviation" on Wednesday, January 29, from 20.30 - 23.00 in the John Paul Riddle Student Center.

Scribner has over 46 years of flight experience, with 35 years as a Pan Am captain. His actual flight time exceeds 27,000 hours. He was designated Master Pilot of Flying Boats and while chief pilot for Pan American for seven years, he flew the first Boeing Stratocruiser to South America. On July 23, 1968, he was captain of the first US transport, a Boeing 707, to fly into Moscow, Russia.

Scribner began his aviation career by becoming the youngest parachute jumper in the United States in 1933. In addition, he invented a steerable parachute which was the first of its kind. During the 1930s and early 1940s, he flew flying boats for Pan American and the US Navy. He performed research on clear air turbulence in a sailplane, and was awarded the title of World Sailplane Aerobatic Champion in 1948.

Elected to Embry-Riddle's board of trustees in 1969, Scribner has remained affiliated with the Embry-Riddle student body through becoming an honorary life member of the Sigma Chi international fraternity and an honorary member of the local Alpha Rho Omega chapter of Sigma Chi. He is also an hon-

orary member of the Embry-Riddle Circle of the Omicron Delta Kappa National Leadership Honor Society.

Further awards and achievements Scribner has received include an honorary Doctorate of Aeronautical Science in 1969 from Embry-Riddle; Champion of Higher Education in Florida Award for the 1973-74 school year; induction in the Aviation Hall of Fame in 1978; the Eighth Annual Bishop Wright Air Industry Award in 1979.

The presentation will hallmark Scribner's autobiography entitled, "Adventures in Aviation," and is being sponsored by the Alpha Rho Omega chapter of Sigma Chi. The book will be on sale to audience members for \$22.

US News ranks ERAU as 18th in the Nation

(US Aviator) Embry-Riddle Aeronautical University in Daytona Beach, FL, has been listed as one of the 18 best engineering schools in the nation by US News and World Report's 1992 College Guide called America's Best Colleges.

The guide advises students and parents on how to choose the best colleges and list "best" schools in several career fields, such as engineering and business, provides relevant statistics such as tuition cost, average Scholastic Aptitude Test (SAT) scores and availability of financial aid.

With more than 1,100 full-time undergraduate students enrolled in Embry-Riddle's Aerospace Engineering department at both the Daytona Beach, Florida and Prescott, Arizona campuses, the University has the largest accredited Aerospace Engineering department in the country.

Embry-Riddle educates 6.5 percent of all Bachelor of Science and 2.4 percent of Master of Science Aerospace Engineers in the United States.

The degree program is accredited by the Accrediting Board for Engineering and Technology (ABET). Ninety-two percent of its graduates who take the Engineer in Training Test, pass.

The national average is 50 percent. The College Guide estimates Embry-Riddle yearly tuition at \$6,200 with room and board estimated at \$3,500 for a total of \$10,117. Other colleges and universities listed ranged from a high of \$31,955 to a low of \$6,904.

FAMA awards students

DAYTONA BEACH, FL(PR) Seven ERAU students have been awarded a total of \$15,000 in scholarships by the Florida Airport Managers Association (FAMA).

Maxine C. Kilgore, a senior majoring in aviation business administration from Brogue, PA, won \$5,000, the largest FAMA scholarship given to the Embry-Riddle students, for the second year in a row.

Other Embry-Riddle students, all seniors, awarded scholarships were: Eric W. Barfield, Daytona Beach, an Aviation Business Administration major, \$2,000; Salvatore A. Castelli, Daytona Beach, Aeronautical Studies major, \$2,000; Jeff S. Elrod, Wyandott, MI, Aeronautical Studies major, \$2,000; Lorrilyn E. Metych, Chicago, IL, Aeronautical Studies major, \$1,000; and Mark G. Storm, Laurel Springs, NJ, Aeronautical Studies major, \$1,000.

Flight tutor lab aids students

by Bill De Brauwer  
Campus News Reporter

The flight department has set up a tutoring service for all flight students. The service is for anyone that has a question concerning flight and ground lab. It is free of charge.

The tutor program is headed by Mike Wiggins, and run by two students, Kurt Neils and Bob "McFly" McStay. They both earned their Certified Flight Instructor/Instrument certificates while flying here at Embry-Riddle. They are

eager to help with any flight problems a student might have.

The tutoring service is paid for by the flight department, so it is there for everyone's use. All one needs to do is go to the tutor lab and they will help you, even if it is for just one question.

The lab has two IBM PC computers that are hooked up to Novel Twist desktop "cockpits" featuring a yoke and power quadrants. They run the "Instrument Flight Trainer" program by Flight Deck Software. As the name implies, the computers are

used to help instrument students.

They are expecting a Macintosh computer in the near future. The lab also includes a reference library.

The lab now helps around 10 students on a regular basis, and is looking to help more.

The tutor lab is located in room G-109A, which is part of the flight simulator lab. Their hours are: M-W-F 0800-1700 and T-R 0800-1030, 1200-1700.

If you have any questions you can call them at 226-6840 or stop by and take a look.

Mannix gets new position

Daytona Beach (PR) Kevin Mannix, Director of Safety, recently was elected to the office of secretary and the executive board of the Florida Association of Campus Safety and Security Administrators.

One of the major items the FACSSA will be working on in the future is the development of statewide minimum training standards for campus safety and security officers.

The Season is Almost Here  
Get in on the action at . . .



American Bartending  
Bartending is the perfect job for busy students. The hours are flexible, it's fun and exciting, plus you can earn a healthy Income while meeting new friends.

Call us now to get started.  
673-5435

Hit The Deck!

OCEAN DECK



Happy Hour  
5pm - 7pm

LIVE ISLAND  
REGGAE  
NIGHTLY

Open Daily  
11am to 3 am  
Seafood  
Oysters  
Clams, Shrimp  
Sandwiches

Great Drinks  
Beer & Wine

253-5224  
127 S. Ocean Ave.

Monday Nights 7-12 pm \$1.50 Buds \$1.99 Burgers	Tuesday Nights 7-12 pm \$3.50 Pitchers \$1.99 Pizza (6')	Wednesday Nights e75 Drafts \$1.95 Oysters per. doz.	Thursday Nights \$1.50 Imports \$1.95 Oysters per. doz.	Sundays 4pm - 8 pm Stormin' Norman Karaokke Sing Thing
--	--	--	---	---

THE ONLY PLACE TO PARTY ANY WEEKEND!!

# The Orientation Team is looking for new blood for next Fall

by Roland Houle  
Campus News Reporter

The Orientation Team is looking for new staff members for the upcoming school year. They will have applications in the Student Center on Feb. 3-7, or applications can be picked up in the Counseling Center.

The Orientation Team, or O'Team as it is more commonly known, is the group of students who make the transition of new students to Embry-Riddle easier.

They do this through counseling the new students soon after they get to campus, advising them where to go to get their paperwork completed, helping them meet new people and showing them around the campus. According to Jeff Williams, senior O'Team leader, his team "points students in the right direc-

tion, and shows them where to go to get things done."

During Orientation, the incoming students also register for classes with the guidance of O'Team members and professors.

Williams said that the O'Team is looking for people who enjoy meeting new people and who are open and fun to work with.

On the O'Team, members meet fellow students that are part of the team as well as the new students.

This year there are 17 openings for team members. Last year there were 14 openings and almost 75 people who applied, so the selection process is very competitive.

The selection process consists of three steps. The first being the completion of the application. Their will be receptions on Feb. 12 and 13, and all applicants must attend one of these.

The second step is an interview with several current O'Team members. In this interview, applicants will be asked questions about their experiences and knowledge so the O'Team members

can get a feel for the type of person the applicant is.

The final step is a role playing interview. O'Team members play the role of new students, and the applicant will play the role of core-group leader.

During this session, applicants must get the "new students" to open up and start talking to each other. Also, they should be able to help the students as much as they can by answering their questions.

Williams stated that this segment is the most difficult part of the selection process, but it is also the most difficult part of being on the O'Team.

There are several times that O'Team members are contracted to work over the next year. The first is the weekend of Mar. 27-29. On this weekend, O'Team members spend the weekend getting to know each other while training for their positions.

Williams stated that during this

weekend, the staff members bond with each other. Through various exercises, members learn to trust and respect each other.

Last year, the O'Team went to the Florida Sheriff's Youth Ranch for the weekend. They are trying to get the same facilities again, but they have not gotten confirmation yet.

The other three mandatory sessions are June 22-24, Aug. 20-25 and Jan. 4-6. These dates are the actual orientation times for new students.

During the Summer B session, new O'Team members team with experienced members during the orientation session. In this way, new members can get practical experi-

ence, while still having a senior O'Team member there to help.

The August session is for the Fall semester. This is when the largest group of new students enters the University. During this time each O'Team may have as many as four core groups to handle.

The final session in January is for Spring Orientation.

Although the position of O'Team Leader is a paid one, Williams stated that members get much more out of it — such as the experience working with people, meeting new people and the satisfaction of helping new students to Embry-Riddle.

Interested students can ask questions and get applications from O'Team members next Monday through Friday in the Student Center or in the Counseling Center. The application deadline is Monday, Feb. 10.

**"...points students in the right direction, and shows them where to go to get things done."**

**Jeff Williams**

**"...they should be able to help the students as much as they can by answering their questions."**

## Clubs work together to travel to Key West

by Jeff Hall  
Campus News Writer

Thanksgiving break, the Windsurfing/Sailing club, the Diving Eagles scuba club and the Riddle Riders motorcycle club worked together for a trip to the Florida Keys. About 40 ERAU students made the 8 hour trip by van, truck, car and motorcycle. All the club members camped at the KOA Campground on Sugarloaf key (mile marker 20), a facility with a pool, hot tub, clean showers, washing machines and a diner.

The weather was a nice 75-85, with a little rain. Costs were small due to funds raised from a car wash and a group rate; one of the Riddle Riders did the whole trip for under \$40. Mike Lubanski of the Riddle Riders stated that, "The motorcycling enjoyment of the trip was the fantastic riding weather and the scenery ... The camping was relaxing, a perfect spot to polish chrome."

Many trips into Key West (where people typically rent scooters) were made from the camp ground. The Riders joined up with the other

clubs at Smathers beach for a swim, after taking a group picture at the most southern point of the United States. The Riders also went to watch the sunset and street performers at Mallory pier.

Dave Bozwell, spokesman for the Windsurfing/Sailing Club, had this to say about the trip: "President of the Windsurfing club Michelle Webb was the coordinator of the whole expedition. We have her and the other club's officers to thank for four days in paradise with no worries; except whether the sun screen would last all day, and which bar to hit on Duvall St." The final decision was a unanimous "all of them."

Smathers beach on Key West had plenty of wind and sunshine. The windsurfers had challenging slaloms around the Portuguese man-o-wars. Mr. Bozwell also stated that, "One day we were going to sail to Cuba, but we could not get back in time for happy hour."

Colin Hughes of the Diving Eagles said their trip went like this: "Unfortunately the wind was bad for



**Go South young men...**  
Riddle Riders take time out from festivities to pose for picture at the Southern Most Point of the United States.

the scuba divers, causing poor underwater visibility, so our reef dives were cancelled." The annual Scuba Club trip to the Keys was probably one of our best ones yet, especially considering that the conditions prevented an open water dive.

The Diving Eagles did shore dive at Smathers Beach, along with getting rides on Dr. Cunningham's (Windsurfer advisor) Hobie Cat.

Colin Hughes added, "Most importantly, members of all three

clubs were able to meet new people and make new friends in the environment that was free from pressures of school and the upcoming finals week.

The Diving Eagles Scuba Club is looking forward to sharing future trips with other clubs."

It was the first time that the clubs worked together.

Three different groups of ERAU students with such varying interests were able to get together and manage such a event.

## Former President wins an Aeronautics trophy

Ormond Beach (PR) Kenneth Tallman, President of ERAU from 1985 until 1991, has been selected as recipient of the Frank G. Brewer Trophy, the most prestigious award given in aviation and space education, according to Malvern J. Gross, president of the National Aeronautics Association (NAA).

This trophy is presented annually to the NAA for "significant contribution of enduring value in the fields of aviation and aerospace education in the United States," Gross said.

While serving in the U.S. Air Force, Tallman was superintendent of the Air Force Academy. After retiring as Lieutenant general in 1981, he served as president of Spartan School of Aeronautics, Tulsa, Okla., and more recently as president of Embry-Riddle.

The citation accompanying the trophy states, "The Frank G. Brewer Trophy is awarded to Kenneth L. Tallman for over 40 years of creative leadership, personal accomplishment and professional contributions to aviation and space education ... he has been instrumen-

tal in developing and delivering aviation and space education to thousands of today's aviation professionals.

"General Tallman guided the growth of Embry-Riddle as its academic program matured into a respected model for higher education throughout the world," said Gross. "He established Embry-Riddle as a national resource for the government, the education community and the aviation industry."

According to Embry-Riddle spokesman, Helen Riger, several significant advances were achieved during Tallman's term. A school of graduate studies and research was established, as was the creation of an airway science simulation laboratory. New degree programs in engineering physics and electrical engineering were also added and full-time enrollment grew. Freshman SAT scores were also increased, placing Embry-Riddle in the top third in the nation.

During Tallman's term as president of the U.S. Air Force

see Trophy, page A8

NEW CDS  
NEW CASSETTES  
USED CDS  
USED CASSETTES  
USED ALBUMS  
ROCK AND  
PROGRESSIVE  
IMPORT POSTERS  
& T-SHIRTS

**CDS & TAPES**  
*The Best Prices On the Area's  
Largest Selection Of CDs and Tapes*



138 Volusia Ave Daytona Beach



CASH & TRADE  
CDS, CASSETTES  
& ALBUMS

NEW!!!  
IMPORT  
COMPACT DISCS!!!

**ATLANTIC SOUNDS**  
138 Volusia Ave.  
Daytona Beach  
(904) 258-1420

Mon-Sat 9am-6pm  
Sun 11am-5pm

BEACH ST.

PALMETTO ST.

US 1

VOLUSIA AVE.

# Fencing team competes in Florida Team Classic

Sports Shorts.....

by Ron Roberts  
Photographer

Last Saturday, January 25, the Embry-Riddle Strike Eagles Fencing Club competed in the Florida Team Classic. The event was held at the University of Florida Gym in Gainesville, Florida. The Embry-Riddle Strike Eagles were represented by the Clan McCloud consisting of: Lonnie Duffey, Michael Marsden and Ron Roberts.

Eight, three-man teams entered the men's foil division of the Team Classic. Teams

came from as far away as Jacksonville, Team Jax, and Orlando, The Eggmen. Also, the University of

Unfortunately, it was not enough to advance to the finals round of competition.

Florida fencing team entered a number of three-man teams. This was the first time the Strike Eagles competed as a team.

The teams were grouped into two pools of four teams each. Each team would fence the other three teams in the pool. The two teams with the most victories in each pool would move on to the finals pool to determine first through fourth place. The remaining four teams formed a consolation pool to determine fifth through eighth place.

Fencing started at nine in the morning. The Strike Eagles competed against The Eggmen, Bauhaus and Team Med in the first round.

The Flinstones, Killer SBD's, Racer X and Team Jax formed the second pool. Clan McCloud lost to Team Med, five victories to one, early in the competition.

The one victory was taken by Michael Marsden, who had the most wins for the Strike Eagles in the tournament. After the first loss, the Strike Eagles steadily improved. After losing to The Eggmen, the Eagles took a solid win over Bauhaus, five victories to two. Unfortunately, it was not enough to

advance to the finals round of competition.

The Eggmen, Team Med, The Flinstones and Killer SBD's went on to the finals

while Clan McCloud, Team Jax, Bauhaus and Racer X stayed behind in the consolation round, Clan McCloud again won handily over Bauhaus, five victories to two, but lost five victories to three against Team Jax.

The last match for the Strike Eagles was against Racer X. Here the Strike Eagle fencers made their best performance of the day, five victories to one.

After the victories were tallied, The Flinstones came out on top. The Flinstones had on their side David Porter, the youngest fencing master in the U.S. and the coach of the UF fencing team. The Eggmen from

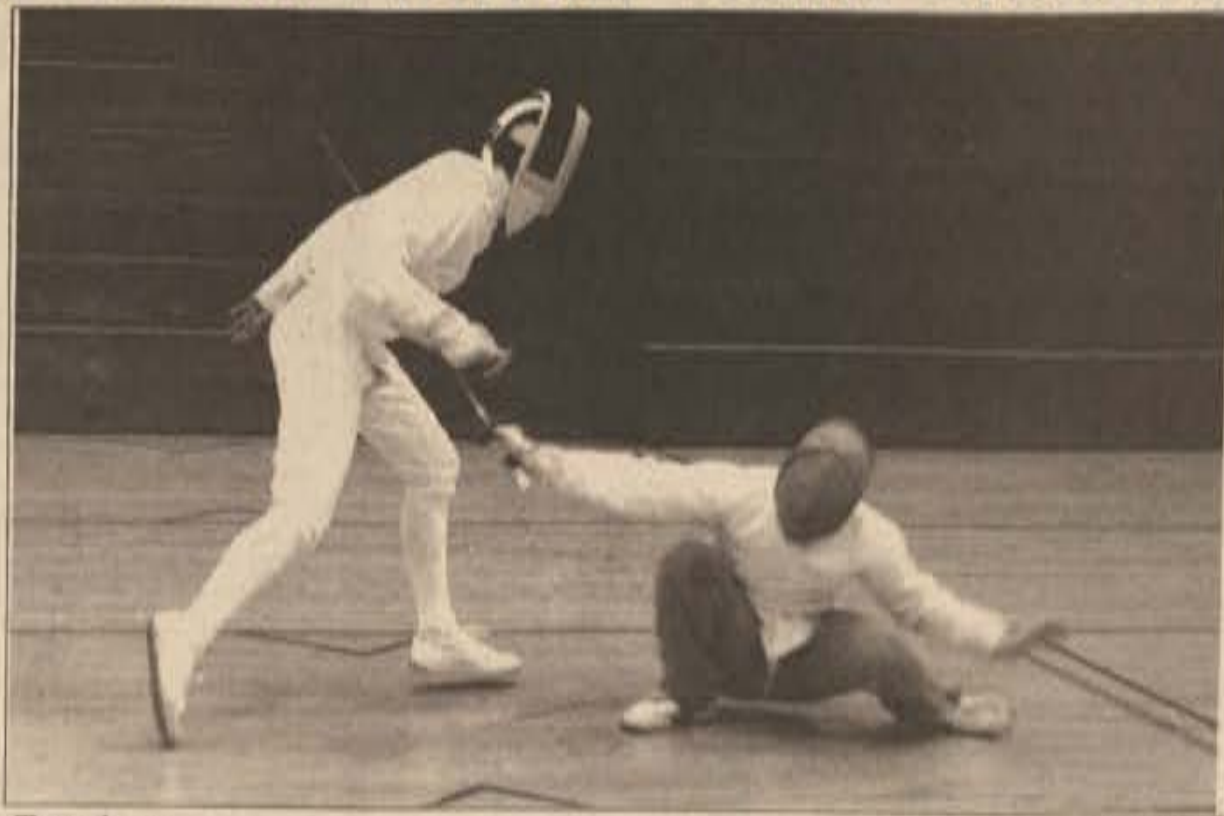


Photo by Ron Roberts

**Touche...**  
The fencing club competed for the first time as a team. Pictured here are Mike Marsden and Lonnie Duffy fencing during a practice.

Orlando took second with Team Med and Killer SBD's taking third and fourth respectively. The Clan McCloud from the Strike Eagles took sixth, losing fifth place to Team Jax and beating out Bauhaus and Racer X.

The Strike Eagles performance was better than expected, but was

hampered by severe equipment troubles. All of the teams' electric weapons except one failed. During the last round the three Strike Eagles had to make use of the last working weapon for nine bouts.

Fencing is a rigorous mental and physical sport that evolved from actual sword fighting. It has since

been refined into the sport seen today. The Strike Eagles meet every Saturday at noon on the basketball courts for group practice. Anyone interested is welcome, and experience is not necessary.

The next official meeting will be held on February 6, at 6:30 p.m. in the Library.

## Owen Bush receives player of the week award

Embry-Riddle's Owen Busch was selected as district 25-F player of the week.

ERAU's Owen Busch was selected NAIA District 25-F Men's Basketball Player of the Week for January 12-19.

Busch, a 6'2" aviation business administration sophomore guard from Orlando, scored 63 points while leading his team to three district victories for the week.

In an 86-67 win against Flagler College, Busch scored 15 points, going 9 for 10 from the free-throw line in the final three minutes. He scored 24 points (five of seven three-pointers made) in a 105-91 win against Warner Southern College, and in a 96-63 win against Webber College, he scored 24 points with five assists. For the week, he had 11 rebounds, nine assists, five steals, was 18 of 22 from the free-throw line and made 16 of 39 field-goal attempts.

## Golf team begins season

The Embry-Riddle golf team will take part in a tournament hosted by Brevard Community College in Rockledge, Florida, from February 2-4. This will be the first tournament out of five for the season. The highlight of the spring season will be the tournament hosted by Embry-Riddle in Palm Coast, which will be played on four different courses.

## Intramural Softball Scores

- Mud Ducks-21, Lambda Chi-13
- Tailhookers-4, Bush Pilots-11
- Scrappers-11, Wrecking Crew-12
- Feeko Suave-3, Fubars-5
- Hangovers-2, Sigma Chi-10
- Ground Effect-6, Diggers-3
- Muddsingers-8, Vets Club Won By One-15, A.C. 2-6
- Hamster 1-2, Unforgiven-13
- Undertakers-4, Hamsters II-5
- A.H.P.-7, Corleone Family-3
- Ron Con Coca-4, L.D.s -6
- Woodies-10, Morticians-1

## Tennis team hosts Stetson in debut

by Grant Bever  
Sports Editor

The Eagles Tennis Team will begin play against the NCAA I Stetson Hatters, which marks the beginning of a tough 31 match schedule. This will be the first time that the Hatters play a match against the Eagles at the Eagles' home courts.

The previous three meetings, all won by the Hatters, were played at Deland.

The opening match will be on Tuesday, February 4, at 2:00 p.m. on the courts of Pelican Bay Tennis Club on Beville Rd. Last season the Eagles ended their season with a

win-loss record of 12-15.

This year's schedule will include five teams ranked in the 25 top national teams and six additional

teams who were district or conference champions in 1991. Coach Knabe states that this year's team is

slightly improved and he expects his team to win about two-thirds of their matches. However, the team will play many teams for the first time and the Eagles have no real feel about the strength of their opponents.

While tennis is an individual sport, a team meet consists of six singles and three doubles matches. The team match goes to the team

with five or more individual match wins. Knabe intends to use some of the reserve players for doubles play whenever possible.

This year's players are Jeff Wood, Diego Carbonetti, Jeff Bourk, Chad Winings, Dan Fulga, Mark Ludwig, Preston Davis, Jason Boits, Thoai Nguyen, Jason Oberhausen, Claudio Ramirez, Luis Perez and Yumin

This year's schedule will include five teams ranked in the 25 top national teams

# Baseball team has new coach with fresh attitude

by David M. Steinfeldt  
Sports Writer

The Embry-Riddle baseball team is about to embark on a new season with a new coach and new hopes. The Eagles will begin their 1992 season this Saturday against Bethune Cookman College at Jackie Robinson Stadium. Bethune Cookman is a NCAA Division I team and this game will shed some light on how talented ERAU's new team is.

In August, Embry-Riddle hired Greg Guilliams as the Eagle's new head coach. Coach Guilliams replaces last year's coach, John Filor, who left ERAU amidst controversy before the completion of last season.

Coach Guilliams played four years of college baseball at Ohio

Dominican College in Columbus, Ohio, where he was an all American player and nominated for player of the year. Coach Guilliams played two years of professional baseball in the Atlanta Braves minor league organization.

The Coach has held two previous coaching jobs and brings the experience and knowledge needed to turn Embry-Riddle's baseball team into a respected threat in NAIA Competition.

Coach Guilliams will be coaching this year's team with the help of his brother, Todd, who is the Eagle's new assistant coach. Together, the Guilliams' demand a lot from their players. The team has a long list of policies and regulations which the players must follow. This strict list enables the players to represent

ERAU in a first class manner both on and off the field.

The number one goal of Coach Guilliams is for the players to get an education. And he feels that discipline is the way to achieve this goal, as well as others.

The outlook for this year's team is very promising. This year the team would like to earn some respect in the league and the players have set their season goal as reaching the conference tournament.

The Coach believes the team must strive for total intensity every day in order to achieve this season's goal. This year's team is disciplined, well prepared and highly motivated and should reach all of their goals.

The players are also very enthusiastic about the team. Catcher Shawn Garvey is one of eight returning

players for the Eagles and characterizes this year's team as extremely optimistic, talented and organized.

Garvey said that he likes the new-found intensity, and describes Coach Guilliams as "great." Rob Shoemaker, an infielder for the Eagles, shares the sentiments of Garvey and said their whole team is excited about the new coach, the new program and the upcoming season.

Coach Guilliams compares this year's season to a horse race: "It's not how you start, it's how you finish that counts." Hopefully the Eagles will start and finish this season in top form.

Good luck to Coach Guilliams and to the Eagles for a successful season.



Photo by Ed Kohinke

**Warming up...**  
Coach Guilliams expects good things from John Morningstar.

## The Eagles lose ground

by Todd Hughes  
Staff Reporter

The Embry-Riddle Eagles had a tough road trip losing two out of three games and dropping four places to number seven in the ranking.

**Florida Christian College**  
The Eagles opened the week by blowing Florida Christian away 99-59. The team out rebounded Florida Christian 48-20 and totally controlled the boards.

Bobby Chisolm came off the bench to lead the team in steals, rebounds and points. Chisolm had 18 points, 11 rebounds and 5 steals.

Kris Shanahan scored 17 points in only 18 minutes of play. Trent Kowalski added 12 points coming off the bench. Jeff "Moose" Moore showed that he can move outside and hit the "three" and was two for two and scored 12 points.

Owen Busch was held scoreless for the first time in his Embry-Riddle career, but he dished out a personal best eight assists.

The game ended with the Eagles extending their winning streak to eight games.

**Florida Memorial College**  
The Eagles winning streak came to crashing halt as Florida Memorial upset them 97-82. The team played poor defensively and Florida Memorial exploited it by shooting 65 percent from the field. The

Eagles were also out rebounded 37-29.

Owen Busch led five players in double figures with 20 points. Kris Shanahan hit four three-pointers and scored 16 points. Jeff Moore, Andy McWilliams and Sean Hester scored 14, 12 and 10 points respectively.

The Eagles were shown that the rest of the season is going to be a long tough fight and teams are not going to bow down to a team that is ranked.

## St. Thomas University

The Eagles lost again for the second night in a row as St. Thomas edged the Eagles 100-98 in overtime. Poor officiating did the Eagles in as they had to play against five players and two referees all night.

Three Eagles players fouled out in the game, including the Eagles two big men; Sean Hester and Jeff Moore.

Rodney King lead the team with 22 points and Tom Pagley scored 21 points to pace the Eagles. Jeff Moore hit for 19 points and Owen Busch scored 17 to round out the Eagles in Double Figures.

## Next Home Game

The Eagles will be at home this Friday night against Nova University and game time will be at 7:30 p.m. at Silver Sands. They will play again on Saturday night against Warner Southern at 7:30 p.m. at Silver Sands.



Photo by Ed Kohinke

**He's back...**  
Last year's number one player on the tennis team, Jeff Wood, is back for another year of competition.

## Sailing team competes in race to Key West

by Ed Kohinke  
Sports Writer

In the time between sailing seasons, what do intercollegiate sailors do besides keep practicing? If they're fortunate enough to have been sailing on an offshore racer locally during the year, they take off on a big race like Ft. Lauderdale to Key West.

For team members Sacha Recchio, Robbie Feeney, James Irmiger, Ed Kohinke and Mark Severson, there was no better way to start off the New Year than to set off from Ft. Lauderdale in the late morning of January 16 on a 160 mile trek to that sunny island on the 24th parallel.

Not everyone raced on the same boat or in the same class; Sacha, James, and Mark were aboard a C&C 37+ called Good Moves while Robbie was on an F27 trimaran and Ed was on a Swan 441.

All were pleased to hear from the weather predictions that the course would be a 20 knot downwind spinnaker run all the way to Margaritaville. At the starting line were over 100 boats waiting for their start sequences to begin; boats including the revolutionary Amoco/Procyon, the course-record-

holding 85 foot maxi Congere, and a fairly new class of several F27 and Condor 40 trimarans.

The strategy was to stick as close to the coastal reef without getting a bite taken out of the keel by a hunk of coral; any further from the reef and the adverse current from the north-flowing Gulf Stream would slow the boat down.

Dark rocks often would glide by ominously under the clear, shallow water as the vigilant crews steered into the night around the tip of Florida. As the air cooled, the stars came out, and dim blue bioluminescence began sparkling in the boat's wakes, adding a magical quality to the journey.

For most of the monohulls, the finish line came into view some 19 hours after the start as they rounded the final mark into the Port Key West channel. The trimarans, including Robbie's F27, had preceded them by almost two hours, even though the tri's had started last. By daybreak on Friday, most everyone was delightfully packing their sails and toasting a truly pleasurable race. The ERAU tally for the race was a fifth, a fourth and a second from last.

Every boat that had come down



Photo by Ed Kohinke

**Sailing away...**  
Sacha Recchio and Mark Severson are aboard "Good Moves."

from Ft. Lauderdale was automatically registered Saturday in the Conch Grinder, a casual around-the-marks race just outside of the harbor. Some crewmembers chose just to relax and tour the island, but the ERAU sailors hoisted sail on Good Moves for a go at it, and may have done well if not for the botched start by the race committee. The team really enjoyed the new experience of having all the members on one offshore boat, with everyone learning to work together in bigger ways. Robbie Feeney felt, "This could be a

sign of good things to come; we may be sailing together like this in the upcoming season."

Overall, the weekend whetted everyone's appetite for another year of offshore sailing here in Daytona. Some members of the team built up their sailing experience simply sailing dinghies in the school team practices, enough so that they felt comfortable on a big boat.

For people interested in learning the art and science of sailing, there are always skippers in the area looking for competent crew!

# Mystery song found on CD



**Nevermind the last song...**  
Nirvana's 13th song has been found.

NEW YORK (AP) - Nearly 3 million people have bought Nirvana's hit album *Nevermind*, but probably only a handful have heard all the songs by the Seattle rock band.

The label on the *Nevermind* compact disc says the release has 12 songs, including the smash single "Smells Like Teen Spirit." But it actually contains a hidden 13th track called "Endless Nameless."

After the 12th track, titled "Something In the Way," there is 10 minutes, three seconds of silence before the bonus song begins. The raw, guitar-laden piece lasts nearly six minutes.

"Endless Nameless" probably would be discovered only by some-

one who forgets to turn off the CD after "Something In the Way."

Chrissy Shannon, a spokeswoman for the David Geffen Co. in Los Angeles, said the unadvertised extra song is typical of the raucous band's style.

"It's just to (mess) with you, That's Nirvana," said Ms. Shannon, who discovered the track accidentally when she allowed the CD to continue past the 12th song. "It's just supposed to make you wonder. There's no involved story."

Ms. Shannon said "Endless Nameless" was mistakenly cut off the first copies of the CD by Geffen's mastering lab.

"If you got one of the first 40,000 or 50,000, you don't have it," she

said. "It's just that the mastering lab screwed up."

The album "is on its way to 3 million" copies sold, but Geffen doesn't release exact sales figures, Ms. Shannon said. The band is touring and was unavailable for comment Friday.

*Nevermind*, which has shot to the top of Billboard Magazine's album chart since its Sept. 24 release, is not the first album to include hidden tracks or messages, said George Gimarc, a disc jockey at Dallas alternative rock radio station KDGE.

"Sometimes there would be messages scratched into the grooves between the songs," Gimarc said. "I have a Jan and Dean record from 1960 that has the name of a motorcycle club that they had friends in."

"In the '70s punk rock movement a lot of singles had messages in them."

Gimarc said *Vinyl*, a recent compact disc release by the rock band Dramarama, lists 11 songs, but actually contains a 12th called "Steve is Here."

Many people probably don't know about the extra song on *Nevermind*, said Gimarc, who has played only portions of the track on the air because "it's not really a song."

"Clearly half the people that have the record don't know about it because they have it on cassette," Gimarc said. "After the CD ends, most people would get up and put something else on."

Bud Buschardt, a music history expert who teaches a course on radio and television at the University of North Texas, agreed that although the Nirvana track is unusual, it's not unique.

"It just happens on occasion or when somebody gets kooky enough to do it," Buschardt said.

## CRITIC'S CORNER:

### Cradle ensures jelly in your lap



**George Clarke**  
Diversions Movie Critic

Fans of Rebecca De Mornay (and if you're a guy who's seen *And God Created Woman*, you are) will be impressed at the countenance she adopts for her new film, *The Hand That Rocks the Cradle*. She takes a slightly different role than usual, the usual being a nice, domineering, in-charge kind of gal. Now De Mornay plays a psycho.

The story is of a typical American family caught in the middle of a nightmare. Claire Bartel (Annabella Scierra) files a complaint against her gynecologist (Star Trek TNG's John De Lancie) after he feels her up during an exam. This prompts him to commit suicide, an act which pisses off

his pregnant wife Peyton (De Mornay). But after she promptly has a miscarriage, Peyton decides to make life a living hell for Claire. She passes off as an irresistible nanny and gets a job as the live-in caretaker of Claire's newborn boy and five-year-old daughter.

Peyton's plan is to steal the hearts and minds of Claire's kids and husband. The movie then follows her as she systematically wins them over. Peyton becomes the confidant of daughter Emma, ridding her of fears of bullies and scary movies. And she wakes up real early every morning to breast-feed little baby Joe. This somehow causes him to only want to feed off of Peyton - and not mother Claire. The battle of the breasts doesn't end there - Peyton tries the same thing on husband Michael. What is poor Claire to do? Get even, that's what.

The acting is great. De Mornay's performance is suitably

psychotic and driven. I hated the Peyton character almost as much as I hated Kathy Bates' Number One Fan in *Misery*. Little Madeline Zima is adorable as Emma, and Annabella Scierra is great as the asthma-inflicted heroine struggling to save her family from this evil homewrecker. And don't overlook *Ghostbuster's* Ernie Hudson, who plays a supporting role as a differently-abled handyman.

Yes, the ending was a bit predictable, and the name Peyton is a blatant (and somewhat trite) connotation, but the film is as much entertaining as it is fascinating.

I loved to see the gradual and sinister seduction of Claire's family. And the action leading into the climax was downright scary. If you're a guy, bring a girl - she'll be a quivering mass of jelly in your lap by the end. And if you're a girl, bring a guy - he'll end up the same way.

## Coliseum hosts fashion show

by Jason Simon  
Diversions Editor

The Coliseum has always been known to provide Embry-Riddle students and the rest of the community with a wide variety of diversions. The same was true this past Thursday night when the Coliseum hosted a smash fashion show courtesy of the Body Shop and Deejaiz clothiers.

"Electric" is the only way to describe the evening. The Coliseum had out did itself with the installation of four more Intellebeam light effects generators above each of the four video screens. This added a new perspective to the club, one that hopefully will not be removed in the near future.

The fashions included some casualwear, bathing gear and some eveningwear. While I was not intrigued by several of the fashions, the major portion of the offerings

were pleasing to the eye (not to mention the incredible female models).

Some male fashions were included in the show, much to the delight of the women in the crowd.

The women made more of a ruckus during the male show than the men did when the female models showed off their "assets" in thong bikinis. Well, there was one exception.

The show was nearly a complete success; there were a few faults, but nothing really worth writing about.

That Thursday was also the launch of the Coliseum's Round The World in Four Days promotional party. The club featured an international flair at each of the bars and prizes that included free bungee jumps and rides in a hot air balloon.

Mixed with the music and light show, the Coliseum ensured a party that few will forget.



**Deep V...**  
Trendy trappings dominated the Coliseum's fashion show.

## COMING NEXT WEEK

Reviews of *Freejack* and the Dennis Miller Show. Plus Jason Simon thinks of an even more provocative headline for George Clarke's reviews. All next week!!!

### ATTENTION

STUDENTS, FACULTY & STAFF

BUY ANY  
YEAR/MODEL  
CAR or TRUCK

WHOLESALE

THROUGH AN ERAU ALUMNI:  
ROBERT JALALI (CLASS OF 1990)

CALL 760-4895 FOR DETAILS

LICENSED, BONDED & INSURED

# DAYTONA GYM



Featuring:  
Largest Free Weight Gym  
In Central Florida  
Over 60 Machines  
Computerized Bikes  
1500 Sq. Ft. Aerobics  
Studio  
Tanning Beds  
New Shower Rooms  
Freeze Policy  
New Hours  
Mon.-Fri. 8-10  
Sat. 11-9  
Sun. 4-7

**Student  
Special**  
\$100.00  
One Full Year  
All Inclusive  
Memberships

Daytona Gym  
Good For One Free Workout  
242 S. Beach St.  
Daytona Beach  
253-8188

Serving ERAU For 16 Years



# Pat Buchanan challenges Bush in New Hampshire

by Joe Cambron  
Senior Editor

George Bush is facing a substantial challenge in New Hampshire this election year from a Presidential candidate that few are giving a chance, Pat Buchanan.

This columnist and former CNN/PBS commentator has been in the forefront of the conservative movement since leaving the Reagan Administration and joining CNN's *Crossfire* show.

**Mr. Buchanan believes in a strong military, but not one that acts as the world's policeman.**

His experience inside politics is limited to stints in the Reagan administration and as a speechwriter for Richard Nixon. Thanks to hundreds of columns and TV appearances, however, his views are highly documented, unlike most other candidates.

Some of Pat Buchanan's strongest views concern the deficit, foreign aid, welfare and trade. He believes in balancing the deficit by privatizing Amtrack, eliminating farm subsidies and ending financial support for the International Monetary Fund and the World Bank.

He also would reform "the welfare state" of this country by eliminating welfare itself and ending talk of national health care.

In the area of education, he supports the closing of public schools in favor of a voucher system that would allow all children to attend private schools at a lesser cost and at

a higher level of quality.

He also believes that values should be taught in school, much as they were during his Catholic upbringing. He would attempt to again allow school prayer and depictions of the manger scene on public property at Christmas time. Mr. Buchanan believes in a strong military, but not one that acts as the world's policeman. (He was against the Gulf War.) He supports the Strategic Defense Initiative in a limited form and at times supports the B-2 bomber.

He thinks that the government should keep its hands off the people by minimizing the size and scope of the U.S. government.

This extends to the office, where he has said he thinks a woman should "give her boss an old fashioned slap on the face" if he makes sexist comments instead of tying up the courts with accusations that are difficult to prove.

One of the most talked about parts of Buchanan's ideology concern his views on trade. He has been labeled a protectionist, but those that have followed him over the years know his views are considerably softer than that. He believes in fair trade with Japan and every other country.

He spoke in support of the free trade bill with Canada and the upcoming free trade bill with

Mexico. He has even voiced a willingness to do the same with Europe if they open their markets and reduce subsidies on such things as grain and corn.

His views on immigration have been highlighted by a speech in which he suggested building a trench and a fence along the border with Mexico.

This project, he thinks, would be relatively low in cost and would employ many workers, while keeping out the workers they might be competing with for jobs.

Many comparisons have been made between Buchanan and Legislator David Duke. There are many similarities between the two in terms of current beliefs, but the similarities end there. Their pasts are, in fact, extremely divergent.

Pat Buchanan's darkest moment concerns knocking out a policeman after he and his date were pulled over "for passing a paddywagon going 20 MPH" on a 40 MPH zone. The young Mr. Buchanan got the charge reduced to a misdemeanor from a felony. The Wall Street Journal reported this incident in a recent story on Pat Buchanan.

Although Buchanan faces long odds to win his party's nomination, he believes it is possible to win. Many conservatives hope he will replace Quayle as the Vice-President on the Fall ticket.

Whatever happens, he will be welcomed back to CNN and probably will give it another try in 1996 if he is not successful this time.

# Ohio sex offender captured in Texas

MANSFIELD, Ohio (AP) - A judge has reimposed a prison term on an Ohio sex offender captured in Texas after national attention was drawn to his case.

Richland County Common Pleas Judge Jim DeWeese on Wednesday returned Mansfield native Eddie Spillman to prison for six to 20 years after he pleaded no contest to

five parole violations.

Spillman, 29, could be eligible for parole in two years. Details on his arrest in Texas were not immediately available.

As part of his probation, Spillman had been ordered not to have sexual contact with anyone except his wife.

A 20-year-old Mansfield woman alleged he raped her last year but he

has not been charged. Authorities alleged he violated parole by having sex with her.

Spillman was captured four days after he was featured in December on the television program, *America's Most Wanted*.

DeWeese reimposed sentences for burglary, sexual battery and gross sexual imposition convictions.

# Substitute gives explicit "sex lesson"

IMMOKALEE, Fla. (AP) - Parents of eighth graders are calling for the arrest of a 19-year-old substitute teacher fired for allegedly detailing her sexual history to her geography classes.

One Immokalee Middle School student even taped teacher Krystal Gail Allen's comments, which were handed over to the Collier County state attorney's office.

"If you haven't heard it I suggest you do not listen to it, unless you have a very good reason," said Sam Lee, the assistant superintendent for area schools. "It is everything you've heard it is, and much worse."

The state attorney's office said Thursday that a preliminary overview of the case does not call for immediate criminal charges. The tape recording appears to be illegal.

Ms. Allen, a 1990 graduate of Immokalee High School, had been a substitute teacher in the Immokalee area since October, according to personnel files.

A group of about 60 parents met at the school Thursday night to say that the firing was not enough and that they want to see Allen arrest-

ed. Parents also called for a change in the district's hiring policy for substitutes and said they plan on petitioning the school board for a change.

"I don't want an apology from that woman, I want to see her arrested," parent Juanita Lopez said. "If I talked to my own children like that, they would throw my butt in jail and that is what should happen to her. I send my children to school so they can learn good things and be good people."

Her 13-year-old son was in one of Ms. Allen's classes and Ms. Lopez said she has pressed charges through the sheriff's office.

The firing stems from an incident Tuesday in which Ms. Allen had been substituting for an eighth-grade geography teacher. She reportedly used graphic language to describe her own sexual exploits, including where and how she performed sex acts and invited the children to share their sexual experiences.

Parents said she danced with boys in the five classes that included about 120 children. Ms. Allen reportedly threatened the students

with expulsion if they told of the conversations.

Ms. Allen could not be reached for comment Friday. Her grandmother, Dorothy Howell, said Ms. Allen discussed the matter with her, but Mrs. Howell declined to comment further.

Sgt. Jim Hansen said an official investigation has begun and school-based deputies will be interviewing students. Two parents have indicated they will press criminal charges, school-based deputy Ken Villa said.

The investigation should be completed by Tuesday.

Collier Superintendent Thomas Richey sent a memo to Ms. Allen Thursday, stating that her name had been removed from the substitute teacher list.

She was placed on the substitute list in October and has substituted in Immokalee schools for at least 22 days.

On Jan. 10, a parent complained that Ms. Allen told her students of "sneaking out to see boys" but there was no immediate action on that complaint. Principal Cecilia Bates said.

Ms. Bates said she intended to talk to Ms. Allen about the incident, but the call came late on a Friday night and she forgot about it by Monday morning.

# McDonnell Douglas files to delay trial

CHICAGO (AP) - McDonnell Douglas Corp. has asked for a four-month delay in the start of a trial stemming from the 1989 jet crash in Sioux City, Iowa, that killed 112 people.

The company, which manufactured the DC-10 that crashed, on Wednesday said statements following a settlement on a prior case plus a television movie about the crash could prejudice jurors.

Attorneys representing passengers on the flight "made public allegations against this and other defendants which were prejudicial," the company said Wednesday in its

motion.

"Moreover, even the reporting of the fact of settlement itself was prejudicial, because plaintiff's attorneys presented it as an admission of liability."

McDonnell Douglas said it also feared that jurors might watch an ABC television movie about the crash, scheduled to be broadcast Feb. 24.

The movie, "Crashlanding: The Rescue of Flight 232," depicts the events that are the subject of litigation, McDonnell Douglas said.

The company said the trial, scheduled to begin this week before

Judge Donald O'Connell in Cook County Circuit Court, should be put off for at least 120 days.

There was no immediate ruling on the motion.

The United Airlines jet, Flight 232, crashed while flying from Denver to Chicago.

Investigators said a fan disk in the rear engine disintegrated, destroying the engine and severing hydraulic lines used to control the aircraft.

The crippled jet made it to the Sioux City airport, but cartwheeled down the runway, broke apart and burst into flames.

## Letters

(continued page A2)

better. I believe I speak for all of us Desert Storm Veterans when I say thank you for support, and for caring so much — it really did make the difference.

If you still feel like insulting soldiers, I'll send you a list of the 263 Americans killed in the Gulf War, contact their families and see how they take it.

Richard Robitaille  
Box 4087

## President addresses aircraft policy concerns

To the Editor:

In a recent issue of *Horizons*, our student newspaper at the Prescott campus, staff member R. K. Wetherell raised some questions regarding corporate aviation practices here at Embry-Riddle. Since there seems to be some confusion and concern I would like to respond by offering this letter describing the practices that currently exist.

The Cessna 303 Crusader (NSER), which my staff nicknamed "Blue Tail," had been targeted for sale and was refurbished to be made available to me. I feel that the aircraft has increased my effectiveness as president in the past six months of its use. The use of 5ER as a corporate aircraft lets me fly into

smaller, and many more, ports of call on a single trip.

For example, on my third trip to Prescott I was able to stop in Greenville, Miss., to investigate American General/Tiger aircraft; Wichita, Kan., to visit the National Institute of Aviation Research and talk with the presidents of Cessna and Wichita State; and San Jose, Placerville, Reno, Denver, Mineral Wells, Waco and Killeen to meet with alumni, parents and key donors. The contacts made and enriched during this trip exceeded what would have been possible if I were to travel only on commercial transportation.

On occasions when the use of 5ER is not cost effective, I use the commercial airlines. For example, three of my four trips to Prescott have occurred during times when secondary calls were not scheduled. I therefore went via the airlines. Typically I stay in Prescott for the additional weekend days, giving up time with my family to take advantage of the "super saver" rates.

5ER is not flown just by me. In addition to helping with the other administrative functions, it is available as a back-up plane for student check flights or cross-country flights in the event of a maintenance problem with their scheduled aircraft. Though 5ER is kept at the Daytona Beach Jet Center to minimize ramp congestion, it can be moved to the ERAU flight line in minutes.

University representatives who are traveling to the same location frequently fly with me to save expenses. Normally I take a student with me who flies as first officer and does the flight planning, pre-flight and some flying. Students selected by the chief flight instructor for these flights enjoy the opportunity to fly on actual business trips under the same time constraints and weather conditions as they would find in corporate aviation. Recently an FA250 student from the Daytona Beach campus made his first IFR cross-country with me to Washington, D.C.; Newport News, Va.; and Auburn University, Ala.; using high altitude J Charts and the aircraft's oxygen system.

5ER is also used for admissions and development contacts. One of the baggage compartments is filled with Embry-Riddle catalogues, posters, booklets and admission application forms that I hand out on my travels. On one trip, when I landed at Montrose, Colo., the owner of the FBO saw me fly over while watching a high school football game and rushed out to the field to see whose attractive Crusader had landed at the airport. After he saw the airplane, he pointed out that two of his private pilot students had gone on to study at Embry-Riddle. Since 5ER was right there, I was able to give him more materials on the University and we made a friend that day.

Several students have suggested

that the University consider buying or leasing turbo-prop aircraft for use in upper-level flight courses. We are currently looking into finding such an aircraft that could satisfy both academic and administrative needs and be cost effective in both areas. Any approach selected would have to be beneficial to students at both campuses.

My contract with the Board of Trustees specifically states that I am expected to fly to as many events as possible. The trustees feel that it is important for the president to appropriately represent the University, and the world expects the president of Embry-Riddle Aeronautical University to fly. We should feel pretty foolish if we taught and encouraged corporate aviation practices, but weren't willing to use them at our own University.

Quite simply, corporate aviation is a cost effective and time-saving mechanism for conducting business. In this time of economic challenge, we are forced to examine the financial impact of all aspects of the University, including the cost of travel, promotion, fund-raising and admissions. Since our current corporate aviation practices are able to combine all of these administrative functions in one package with acceptable financial impact, it makes sense to practice what we preach — the effectiveness of corporate aviation.

Please be assured that during

these times of financial stress, I am sensitive to finding ways for delivering superior value to the students for their tuition dollars.

Dr. Steven Sliwa  
President, ERAU

## Trophy

(continued from A5)

Academy, 1977 - 1981, he initiated and supervised the full integration of women into the academy and established greater opportunities for minorities. Gross said.

The presentation of the Frank G. Brewer Trophy will be made by Adm. Dick Truly, administrator of NASA at the National Congress on Aviation and Space Education on March 26, 1992, in Oklahoma City, at which more than 1,000 aviation and aerospace educators will be present. Taffman will receive a replica of the trophy which is kept on permanent display at the Smithsonian Air and Space Museum.

The NAA is the oldest aviation organization in the United States. Its primary mission is the advancement of the art, sport and science of aviation and space flight by fostering opportunities to participate fully in aviation activities and by promoting public understanding of the importance of aviation and space flight to the United States.

Nominations for the award were solicited from more than 400 organizations and aviation educators in the United States. The winner was selected by a distinguished committee of aviation and aerospace educa-

tors. Taffman graduated from the U.S. Military Academy, West Point, in 1956 with a bachelor of science in military science and engineering. He received a Master of Science in international affairs from George Washington University and completed the National War College in 1967.

After earning his pilot wings in 1946, he served in a succession of flight unit assignments, including aircraft carrier duty with the Navy.

He first served at the U.S. Air Force Academy in 1946 as a training officer and advisor to students. That assignment was followed by duty in Europe, Okinawa, Vietnam and various locations in the United States with steadily increasing levels of responsibility.

In 1977 he became the eighth superintendent of the Academy. He retired for the Air Force in 1981 after 35 years of service.

He and his wife Jeanne (Dec) now live in Ormond Beach, Fla. They have two daughters, Carol and Leslie, and a son, Richard, and seven grandchildren.

When contacted recently, Taffman said, "I feel very honored to receive this award. I'd also like to say it was a great privilege to serve as president of Embry-Riddle and associate with such a fine group of students, staff, faculty and trustees."

## Carburetor

(continued from page A1)

two-piece part with the new one-piece casting.

Last October, the board said, the company asked the FAA to make that replacement mandatory and to do so immediately.

The company said the older part represented "a significant safety of flight problem and must be removed from service."

The safety board agreed, saying it believed that problems with the affected carburetors can only increase over time.

# We're Looking for the BEST College Students in Florida!

Students from colleges throughout Florida will vie for more than \$30,000 in scholarships and prizes in the prestigious 1992 "Florida College Student of the Year" contest sponsored by Florida Leader. Applications must be postmarked by February 1, 1992. You do not have to be nominated by your college to win! For application information, send a self-addressed, stamped, business-size envelope to "Florida College Student of the Year," c/o Florida Leader magazine, P.O. Box 14081, Gainesville, Fla. 32604-2081.

SPONSORED BY

**FLORIDA LEADER**

AND THESE OUTSTANDING CO-SPONSORS

First Union National Bank of Florida  
Winn-Dixie Stores, Inc. & Mr. J.E. Davis  
Zenith Data Systems, Inc.  
Busch Gardens  
The Honorable William E. Simon  
The John M. Olin Foundation