



The Space Congress® Proceedings

2007 Space Visions Congress - Growing the
Next Generation of Scientists and Engineers

Apr 27th, 8:00 AM

Technical Paper Session I-A - Escalation: How Much is Enough?

Glen Butts
NASA Program Analyst

Follow this and additional works at: <https://commons.erau.edu/space-congress-proceedings>

Scholarly Commons Citation

Butts, Glen, "Technical Paper Session I-A - Escalation: How Much is Enough?" (2007). *The Space Congress® Proceedings*. 13.

<https://commons.erau.edu/space-congress-proceedings/proceedings-2007/april-27-2007/13>

This Event is brought to you for free and open access by the Conferences at Scholarly Commons. It has been accepted for inclusion in The Space Congress® Proceedings by an authorized administrator of Scholarly Commons. For more information, please contact commons@erau.edu.

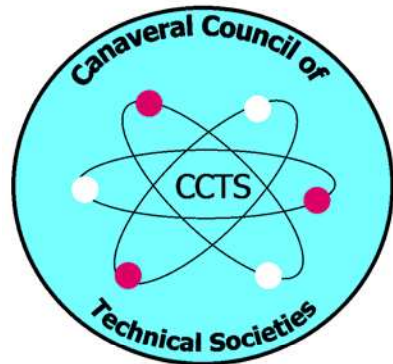
EMBRY-RIDDLE
Aeronautical University™
SCHOLARLY COMMONS

TECHNICAL PAPER

SESSION 1A

“ESCALATION: HOW MUCH IS ENOUGH?”

GLEN BUTTS



SPACE VISIONS CONGRESS 2007

Butts, Glenn C [<mailto:Glenn.C.Butts@nasa.gov>]

Glenn Butts
CGC, CMC, CFC, CCC
NASA Program Analyst
Phone (321) 867-7198
Fax (321) 867-7037
Mail Code DX-D

Escalation How Much is Enough

Escalation rates are a fiercely debated subject. Escalation is determined by dynamic relationships between numerous factors. They include acts of nature, interest rates, oil prices, global commodity markets, wars, wage rates, overall health of the economy, as well as supply and demand, which is ultimately affected by the aforementioned items.

How much escalation is enough? We all are aware of the recent rapid escalation occurring, and are wondering if it will continue, or if it has been a temporary aberration. This paper examines historical escalation rates, as well as indications of future trends. In lieu of citing anecdotal evidence analysis methods including Monte Carlo, Neural Networks, Trend Impact Analysis and Delphi are examined in an attempt to determine future trends.

Escalation: How Much is Enough?

Glenn C. Butts
KSC NASA
Glenn.C.Butts@NASA.Gov

Abstract

Determining the escalation percentage to an estimate is often the subject of fierce debate. Cost increases are determined by dynamic relationships between many factors, including acts of nature, interest rates, oil prices, global commodity markets, wars, wage rates, and the overall health of the economy, as well as supply and demand for the required goods or services.

How much escalation is enough? Are the recent price increases temporary aberrations, or will they continue to plague us? This paper examines historical escalation rates, as well as indications of trends. Various analysis methods—Monte Carlo simulations, neural networks, trend impact analysis, and the Delphi method—are examined in an attempt to determine future trends.

Paper

Accurately forecasting escalation rates can play a pivotal role in determining job profitability or job viability especially for large multi year construction and development projects. The estimator must predict the cost of future goods or services that must be purchased in the future, perhaps many years from now. If the prediction is wrong, profitability suffers. Owners are typically less than responsive for requests for equitable adjustment as a result of contractor cost increases.

The most difficult part of any cost estimation process is determining how much escalation to apply to the estimate. The construction industry has recently seen a rapid escalation in pricing,

leaving estimators wondering whether this is a trend that will continue or merely a temporary aberration. After a great deal of research, summarized here, the author believes that there are two viable methods available to predict escalation.

The first is limited to short term escalation (periods less than a year) is a 12-month moving average of the rate of change for the cost index that is most applicable to the work being performed. This 12 month moving average may perhaps be extended for as much as another year if interpolation is used to factor in anticipated trends derived from industry applicable leading indicators like, interest rate changes, the Architectural Billings Index (ABI), and the Baltic Dry Index.

The second is to use a Monte Carlo simulation with a distribution derived from historical cost index data, again using the most applicable cost index. An informed management decision is then made as to the amount of risk they are willing to accept. Refer to Figure 13 for an example of this concept.

Can Escalation Be Predicted?

Many believe the economy to be cyclical, with identifiable, predictable periods of boom and bust that last 14 to 20 years. Since a 20-year period of low inflation has just ended, they believe that we are due for 14 to 20 years of high inflation.

In contrast to this, in 1973 American economist Burton Malkiel developed a “random walk” hypothesis that implies that such predictions are impossible[5]. The random walk theory proposes that future events are truly random and thus cannot be predicted. Predicting the rate of escalation has

been compared to searching for a black cat in a dark room.

But, as the philosopher George Santayana wrote, “Those who cannot remember the past are condemned to repeat it.” Therefore, if the economy is truly cyclical, with identifiable periods of expansion and contraction, trends should be predictable. In this line of thought, the likelihood of extreme variations should also be predictable. Thus, if wild oscillations occurred in the past, they can occur again.

The Problem in Using Cost Indices

Cost indices are frequently used in predicting escalation. The cost index, devised by G.R. Carli in 18th century Italy, compares the change in cost between periods for a fixed quantity of goods or services[6]. The concept of the cost index may be useful in some industries, but of the many cost indices in use today, no single index completely represents the construction industry. These indices have the same problem—they are lagging indicators since they measure cost changes that have already occurred. Also, these indices cannot account for the substitution of one product with another. For example, contractors may buy aluminum wire when the price of copper wire rises dramatically, or when regional shortages cause soaring prices. Since cost indexes track specific goods and services, if others are substituted, the rate of escalation measured by the index will be incorrect.

Market Conditions Are Not Escalation

Escalation or inflation is broadly defined as in change in the cost of a good or service over time. From an owners perspective there is a problem with this definition, since it does not specify whose cost, the owners or the contractors. Since most cost indexes measure the cost to the contractor, over a large geographical area and also fail to account for the difference in costing and pricing. Pricing is

broadly defined as the cost the contractor bids for the job[8].

This is why escalation should not be confused with local market conditions, or demand surge as the insurance industry classifies it, although they both affect cost. Market conditions are generally additive to escalation. Categorized by specific local cost drivers like, fear factors or opportunity cost increases, market conditions are usually limited to a local area or region. For example market conditions may substantially increase local costs after a natural disaster, or during regional booms when contractors have more work than they need. The number of bidder concept can help correct for market conditions[3].

Construction Escalation Factors

Many factors influence construction escalation. These include:

Global demand. The global demand for commodities is greater than any prior time in history.

Energy costs. The costs of oil, natural gas, coal, and electricity are major components of construction cost. They are expected to continue to rise substantially as a result of:

- Utility deregulation – Rates, which have been locked at an artificially low level for a number of years, are opening up to market pricing; and large increases are expected.
- Environmental regulations – Fears of global warming fears are driving retrofits of power plants, use of cleaner fuels, and pollution controls on new diesel equipment—all of which are expensive.

Aging infrastructure. Much of America’s power distribution system is beyond its life expectancy. Replacement will be very expensive.

Instability in the Middle East. Crude oil and natural gas are used in the mining, production, and transportation of many construction materials.

Security requirements. New security requirements for background checks limit the available pool of workers. Also, competition for workers who can pass background checks has intensified in the post 9-11 world.

Climatic changes. The United States is entering into a period of increased hurricane activity. A landfall of a large hurricane anywhere within a region will consume that region's available resources. Also, considering the explosive increase in coastline development, hurricanes will have a much greater impact than the data indicates.

Immigration policies. Illegal immigrants make up a large share of the labor pool in the construction industry. If there is a decrease in the use of illegal labor for construction, the competition for labor from legal sources will drive up costs.

Nuclear power. The construction of several new nuclear plants is close to approval. This multi-billion-dollar construction effort will draw on a large portion of the regionally available skilled labor and resources, driving up costs.

Escalation Indicators

Both short-term and long-term escalation indicators are used in estimating escalation. Of the many indicators available, some appear to be more predictive than others. However, all indicators are subject to interpretation. This discussion is limited to a few of the more popular indicators.

Short-Term Escalation Indicators

Short-term escalation indicators include interest rates, the Architecture Billings Index (ABI), and the Baltic Dry Index (BDI).

Interest rates. Interest rates appear to have an inverse relationship with construction cost increases (Figure 1). When interest rates increase, the cost of financing construction rises, and the number of new projects gradually declines. With less work, there is more competition for the available projects and a reduced demand for raw materials. Increases in interest rates generally precede a slowdown of the general economy, making companies less likely to fund large capital projects. On the other hand, if interest rates are reduced, the cost of financing construction is reduced, and the economy is generally poised for an upswing.

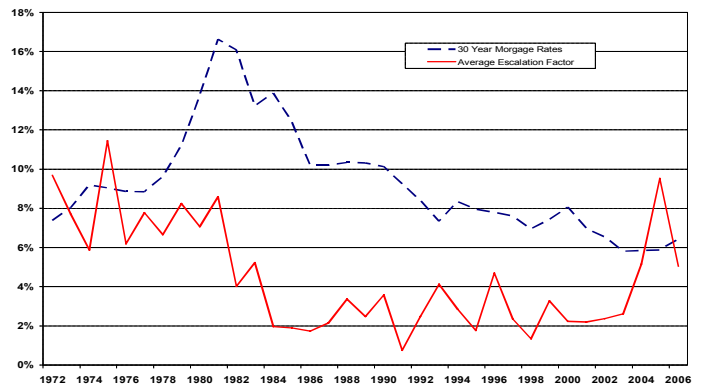


Figure 1 – Cost Index Compared to Rates for 30-Year Fixed-Rate Mortgages

ABI. Since 1995, the American Institute of Architects has generated the Architecture Billings Index (ABI) based on results of a monthly survey of approximately 300 U.S. architecture firms. This index, shown in Figure 2, is designed so that ratings above 50 indicate an increase in billings. A statistical analysis conducted by Kermit Baker and Diego Saltes indicates that the ABI has a high degree of correlation with construction activity, with lead times up to a year[2].

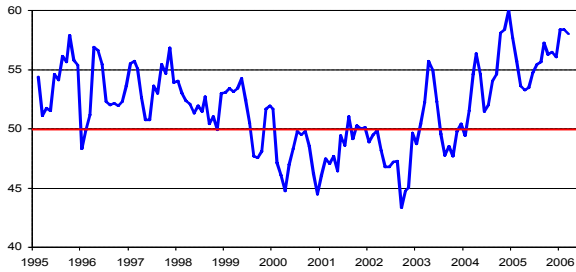


Figure 2 – ABI for Commercial and Industrial Projects

BDI. The Baltic Dry Index (BDI), shown in Figure 3, is issued daily by the London-based Baltic Exchange. The BDI, which is based on the costs of shipping raw materials by sea on various routes, has been in use since 1744 and is still considered an accurate leading indicator of global economic growth.

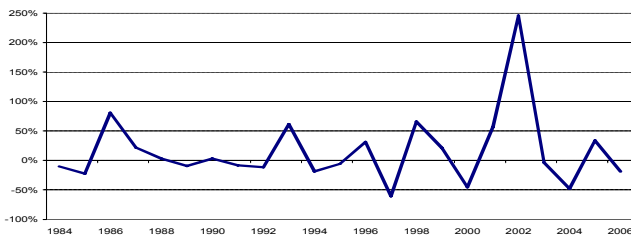


Figure 3 – BDI

The BDI tracks the costs of transporting commodities required for production (such as cement, coal, and iron) and excludes the costs of transporting finished goods via container ships. Because the supply of cargo ships is limited (it takes approximately 2 years to build a new ship), marginal increases in demand can push the index higher quickly. Significant increases in demand can push the index sharply higher.

Long-Term Escalation Indicators

Reputable sources for long-term escalation predictions tailored to the construction industry are sparse. The following three are commonly used:

OMB. The Office of Management and Budget (OMB) releases free inflation guidance on an annual basis. This data is used for most Government programs, but as it bears the weight of political agendas, its validity must be taken into consideration.

CMFS. The McGraw-Hill Construction Market Forecasting Service (CMFS), a fee-based product of McGraw-Hill Analytics, offers an extensive 5-year forecast with detailed profiles of construction activity and a comprehensive analysis of key market trends and economic conditions for the United States and nine U.S. regions. Projections are developed every quarter by a team of economists who use econometric forecasting techniques and the most current economic, demographic, and building data available.

BCIS. The Building Cost Information Service (BCIS), a division of the Royal Institution of Chartered Surveyors (RICS), is a fee-based service that offers 5-year escalation forecasts tailored to markets in the United Kingdom.

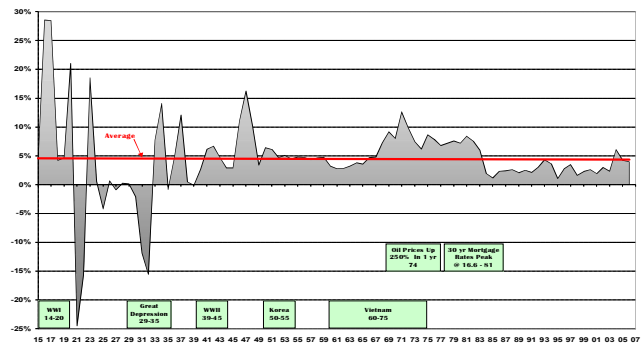


Figure 4

Analysis Methods

Various methods of analysis are useful in determining escalation trends: Monte Carlo simulation, trend impact analysis (TIA), application of factors affecting construction escalation, neural networks analysis, and Delphi studies.

Monte Carlo Simulation

By using the Monte Carlo simulation technique in the predictive process, the estimator can determine the likelihood of a particular escalation rate being accurate. This is done by obtaining as much historical data as possible and determining the best-fit distribution of the data.

In the Monte Carlo simulation, one of the most popular computer simulations, random sample data is generated based on a known distribution. Monte Carlo, when properly applied, is an emulation of reality based on the Law of Large Numbers. If enough samples are generated, eventually an approximation of the total distribution (all possible outcomes) will be obtained.

Under this approach, the author originally planned to convert several cost indices into percentage gain or loss per year and average the results of various indices. However, this approach dampened oscillations in the individual averages as a result of the Central Limit Theorem. In simple terms, the Central Limit Theorem states that a small sample expanded to encompass the total population will have a normal distribution. This occurred since individual averages tended to lead, or lag, the others. Therefore, the author elected to use a single index in the Monte Carlo simulation. The Engineering News-Record (ENR) Construction Cost Index (CCI) was selected because it is a reputable index, providing many years of data for analysis[4]. Figure 4 is a graphical representation of this index from 1914 to 2006.

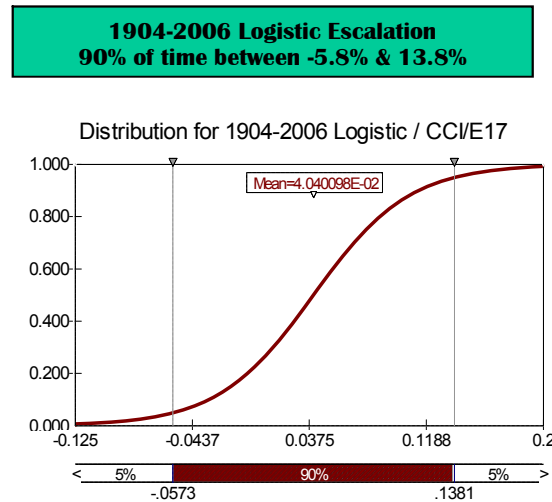


Figure 5 – 90 Years of CCI Historical Data

Palisade Corporation's @Risk Professional 4.5.5 was the software chosen to run the Monte Carlo simulation for this analysis. Distributions were selected using the BestFit feature. The analysis ran for 100,000 iterations (years). For the period from 1904 to 2006, the logistic distribution revealed that 90% of the time, escalation fell between -5.8% and 13.8%, with a mean value of 4% (Figure 5).

1968-1983 Escalation
90% of time between 6.1% & 10.6%

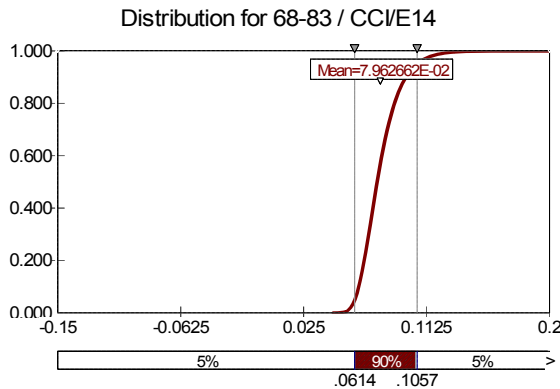
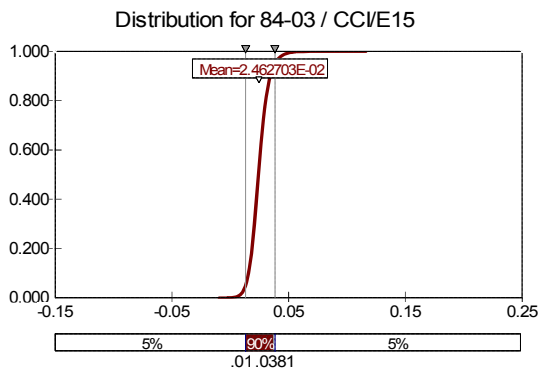


Figure 6 – Logistic Distribution for the Entire Period

Because the CCI historical data shown in Figure 4 revealed distinctive periods of high and low escalation, two other periods were selected for analysis.

- Running an ExtValue distribution on the period 1968–1983 revealed that 90% of the time, escalation fell between 6.1% and 10.6%, with a mean value of 8% (Figure 6).
- Running a Logistic distribution on the period 1984–2003 revealed that 90% of the time, escalation fell between 1% and 3.8%, with a mean value of 2.5% (Figure 7).

1984-2003 Escalation
90% of time between 1% & 3.8%



Figures 7 & 8 – Examination of Distinctive Periods

In homage to the Central Limit Theorem, a cornerstone of statistics, a normal distribution was selected for another analysis. The normal distribution was the second best fit for the data, as determined by the Anderson-Darling, Komolgorov-Smirnov, and chi-square goodness-of-fit tests. This suggests that the Central Limit Theorem is correct in this instance, and the normal distribution is the correct distribution.

Running a normal distribution for the period 1904–2006 indicated that 90% of the time, escalation fell between -7.9% and 15.8%, with a mean value of 3.9%. These results are shown in Figure 8.

1904-2006 Escalation
90% of time between -7.9% & 15.8%

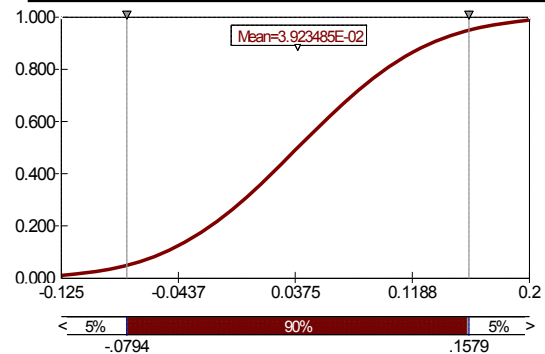


Figure 9 – Normal Distribution

Monthly escalation rates were then examined in an attempt to add granularity (Figure 9). Unfortunately, only 54 years of CCI monthly data were available for this analysis, from January 1952 to August 2006. This subset of the data excluded many years in which there were substantial oscillations in the data. Therefore, a normal distribution was selected for the analysis. As expected, this analysis closely correlated with the annual analysis, requiring 0.4% per month (4.85% annually) for a 50% probability of overrun—or 0.7% per month (8.4% annually) for a 70% probability of overrun.

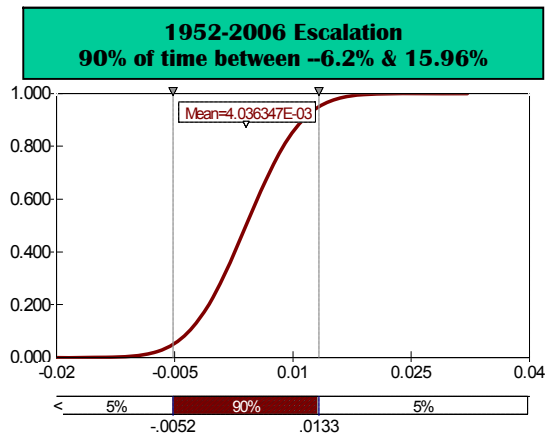


Figure 10 – Examination of Monthly Escalation Rates

Further parsing of available ENR monthly data into skilled labor, common labor, and material categories, depicted in Figure 10, reveals that recent price spikes are primarily the result of material price increases. Unfortunately, only a limited quantity of detailed data, from 1977 to 2006, was available for this analysis.

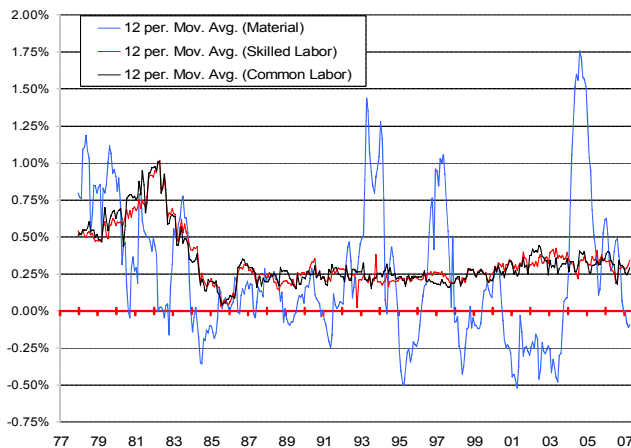


Figure 11 – Correlation Between Monthly Labor and Material Price Changes

To summarize the findings from the Monte Carlo simulation, the 2.5% mean escalation for the 20 years between 1984 and 2003 has been underrunning the 4% mean escalation for the period from 1904 to 2006. According to the Reversion to the Mean principle, an accepted statistical theory, escalation will eventually move

back to the mean value of 4%. However, if we average the escalation for the 1904–1994 period (halfway through the recent period of low escalation), then the mean value rises to 4.2%.

The Monte Carlo simulation can allow management to decide how much escalation to use, depending on how much risk the project is willing to assume. For example, if management decides that a 70% probability of success is desired, as indicated by Figure 11, a normal distribution will predict an 8.3% annual escalation.

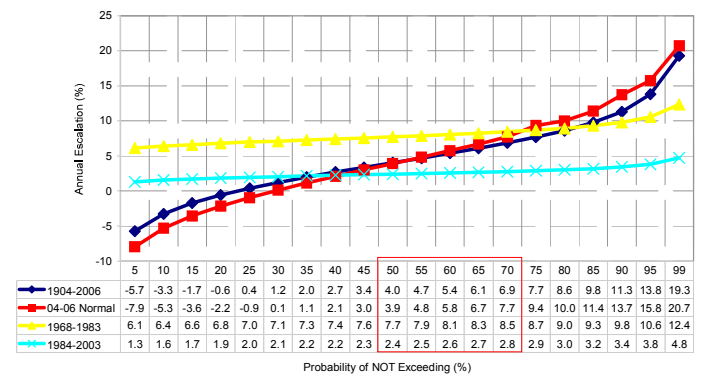


Figure 12 – Escalation Based on Acceptable Risk

Trend Impact Analysis

In trend impact analysis (TIA), a forecasting method developed in the late 1970s, extrapolations of historical trends are modified to allow for the effects of plausible future events. If we use a rudimentary form of TIA and claim parallels from the last period of high escalation (1968 to 1982), then we can project possible escalation rates for the next 14–20 years for which we expect high escalation. This premise is shown in Figure 12.

To obtain the results shown in Figure 12, an assumption was made that the 1968–1982 distribution would apply to the 2007–2020 period. By selecting the Monte Carlo option from the @Risk Standard Recalc menu and clicking the F9 button, the user can display a possible scenario based on historical data.

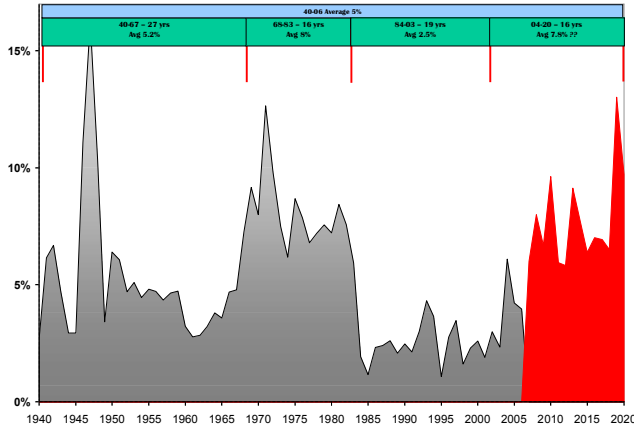


Figure 13 – Trend Impact Analysis

Neural Network Analysis

In a search for alternative escalation forecasting methods neural networks were examined. By mimicking the functions of the human brain, neural networks can discern complex correlations in historical data for use in various predictions. Unfortunately, after billions of iterations with two software packages, no consensus was obtained. Small changes in settings created widely divergent predictions, indicating everything from staggering inflation to colossal deflation.

Other Work

The Society of Actuaries recently completed a 142-page Delphi study that forecast long-range values of four economic variables (Figure 13). While this study did not examine construction escalation specifically, it did examine the expected annual change of the Consumer Price Index (CPI). A comparison shows that the CPI generally tracks with the CCI, but underruns the CCI 68% of the time.

This analysis polled 24 industry experts, primarily economists and actuaries, and the consensus was that “In the case of the curve fit baseline, (CPI) inflation grows to 9% or so shortly after 2010 and then begins to diminish; for the linear baseline, inflation grows throughout the period reaching about 7% in 2024”[7].

According to the experts polled, the following ten events can be used to foretell whether rates of inflation will increase or decrease:

1. Oil prices rise over \$60/barrel for at least 5 years.
2. The value of the U.S. dollar collapses in comparison to the Euro.
3. The CPI reflects pressures from growing budget deficits, rising demand for services (e.g., health-care costs), a stable or declining labor force, and concomitant growth in retirements.
4. New technologies cause the costs of production of most products to drop by 10% or more.
5. There are significant corporate defaults (three times over the current rates).
6. Investor confidence in the U.S. economy drops; direct foreign investment falls to 50% of current levels.
7. Global political instability, Iraq-like wars, and terrorist activities and threats become the norm.
8. New technologies improve productivity in services by more than 10%.
9. The climate for investment in U.S. proves attractive.
10. Globalization lowers labor costs by an average of 10%.

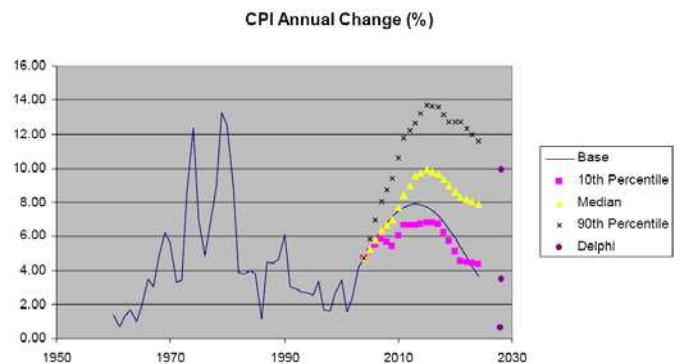


Figure 14 – Delphi Examination of CPI

A 2001 study published by the Federal Reserve Bank of Minneapolis examined the usefulness of Phillips curve-based models in forecasting

inflation[1]. These models are based on the non-accelerating inflation rate of unemployment (NAIRU). It compares the accuracy of three sets of inflation forecasts from NAIRU models to the assumption that at any date, inflation will be the same next year as it was last year. It asserts that none of the NAIRU forecasts are more accurate than the assumption and states: “The likelihood of accurately predicting a change in the inflation rate from these three NAIRU forecasts is no better than the likelihood of accurately predicting a change based on a coin flip. . . . We find that for the last 15 years, economists have not produced a version of the Phillips curve that makes more accurate inflation forecasts than those from a naive model that presumes inflation over the next four quarters will be equal to inflation over the last four quarters.”

Summary

Predicting the exact annual escalation expected is admittedly difficult, if not impossible. However, in the 20 years between 1983 and 2003, escalation has been abnormally mild, averaging 2.5% (within a 1% to 3.8% range) 90% of the time. Annual escalation has exceeded 4% 42 times over the past 90 years, and exceeded 10% 12 times. This excludes market factor increases that occurred after natural disasters or during boom periods.

Material prices have been the primary driver in recent cost increases, as shown in Figure 11. However, escalation has been underrunning the long term historical averages. The Reversion to the Mean theory predicted a correction in prices, which has now occurred. Anecdotal evidence is indicating substantial pressure on wages. This suggests that the current trend of high costs and low wages will not continue. Either material costs will decline or labor costs will increase.

If short-term escalation predictions are required, then the 2001 Federal Reserve study offers compelling evidence that on average, the next year’s inflation rate will be the same as last year’s inflation rate. Perhaps a 12-month moving average

of the rate of change for the estimator’s favorite index will prove a valid indicator of the current trend.

The available information indicates that we are entering a period of increased volatility in the construction industry. The world economy is changing, and emerging markets are increasingly affecting commodity prices. The estimator is increasingly challenged in trying to determine trends in construction escalation and, ideally, the escalation range.

Figure 14 contains the @Risk best fit distributions for the ENR Building Cost Index, and the Construction Cost Index that were used for this paper.

Year	CCI	BCI
1915-2006	=Risk Logistic(0.04421, 0.031153)	=Risk Logistic(0.0371, 0.030702)
1940-2006	=Risk Gamma(2.0559, 0.020279, Risk Shift(0.0086651))	=Risk InvGauss(0.055277, 0.153698, Risk Shift(-0.010448))
1968-1983	=Risk Extnorm(0.073327, 0.010914)	=Risk Logistic(0.075144, 0.016628)
1984-2003	=Risk Loglogistic(-0.022251, 0.052313, 12.387)	=Risk Lognorm(0.034878, 0.013847, Risk Shift(-0.012949))
1904-2006 Normal	=Risk Normal(0.039235, 0.07215)	No Data
1904-2006 Logistic	=Risk Logistic(0.040401, 0.033168)	No Data

Figure 15 – Best Fit Distributions

The author welcomes comments, suggestions, or criticism regarding this subject.

References & Recommended Reading

1. Atkeson, Andrew and Lee E. Ohanian, Winter 2001, "Are Phillips Curves Useful for Forecasting Inflation?", *Federal Reserve Bank of Minneapolis Quarterly Review*, Vol. 25, No. 1
2. Baker, Kermit and Diego Saltes, February 2006, "Business Activity at U.S. Architecture Firms as a Leading Indicator for the Construction Industry," *Cost Engineering*
3. Butts, Glenn, 2006, "Accurate Estimates in Less Than a Minute," *2006 AACE Annual Transactions*
4. *Engineering News-Record*, McGraw-Hill Construction
<http://enr.construction.com/>
5. Malkiel, Burton, 1973, *A Random Walk Down Wall Street*, W.W. Norton & Company, Inc., New York, N.Y.
6. Ostwald, Phillip F., 1992, *Engineering Cost Estimating*, Third Edition, Prentice Hall, Englewood Cliffs, N.J.
7. Society of Actuaries, 2005, *A Study of the Use of the Delphi Method, A Futures Research Technique for Forecasting Selected U.S. Economic Variables and Determining Rationales for Judgments*
8. AACE International, 2003, *Certification Study Guide*, Second Edition Revised, AACE International, Morgantown, W.V.

Escalation: How Much is Enough?

GLENN BUTTS
KSC NASA
CCC, CGC, CMC, CFC

10/15/2007 9:56 PM

1

Complex Subject

- Escalation is a very complex subject
 - Basic economic principle - Supply and Demand
- Many variables to consider
 - Economy overall health
 - Hedge Funds
 - Cost of Oil
 - Environmental regulations (global warming)
 - Illegal immigrant crackdown
 - ~25% of all construction workers illegal
 - 55% of all concrete workers foreign born Hispanics
 - 22% of all painters illegal
 - 10% increase in worker supply = 3% decline in local wages
 - 50% increase in worker supply = 15% decline in local wages
 - Many more
 - 29% Increase in minimum wage

10/15/2007 9:56 PM

2

Basic Concept

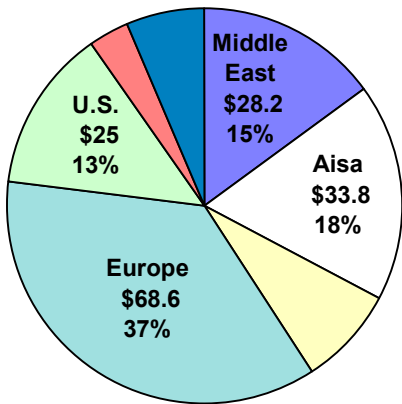
- Construction is large part of our economy
 - When economy is strong construction generally increases faster than overall economy
 - Inversely when economy weakens construction generally slows faster



10/15/2007 9:56 PM

3

2005 Construction Billings by Market



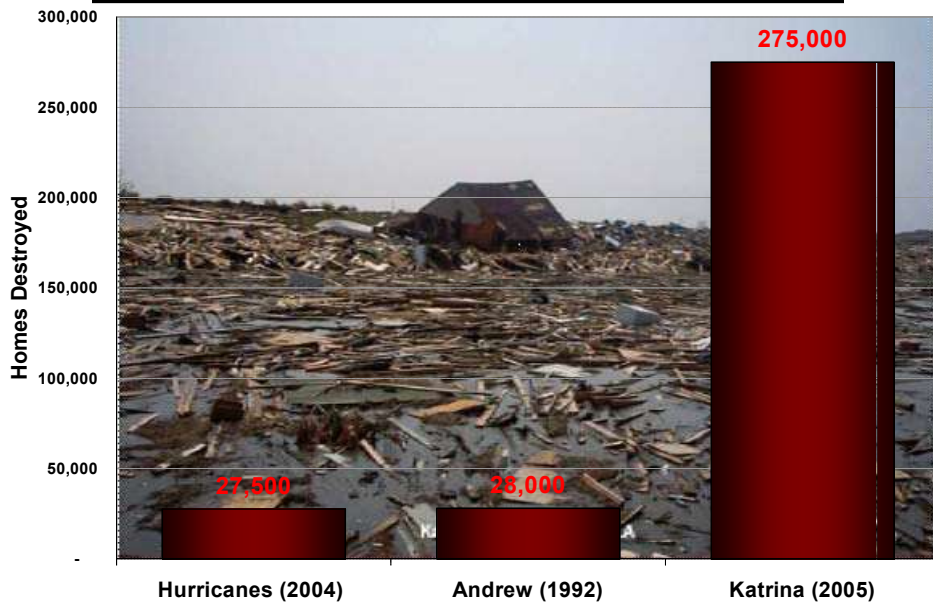
In Billions

- Historically U.S. construction costs primarily product of U.S. economy
- Global economy is now driving many increases
 - Emerging markets in massive construction boom
 - Beijing China has 1.7 Billion SF under construction @ 10,000 sites \$180+ Billion
 - Demand absorbed ships
 - Imports cost more

10/15/2007 9:56 PM

4

Hurricane Recovery - Billions



Nuclear Power

Billions in New Nuclear Power Plants in Planning Stages

- 20-29 new units planned
Source ENR
- 19+ new units in approval process
Source Nuclear Energy Institute 9-06 Report
- \$300-\$500 Million Per Plant + Reactor Cost
- All will not be approved

Company	Plant Sites	Application Filed
Dominion	Va.	2007
Duke and Southern	SC	2007
Entergy	La	2008
NuStart (Entergy)	Miss.	2007/2008
NuStart (TVA)	Ala.	2007
Progress Energy	Fl.	2007/2008
S.C. Electric & Gas/ Santee Cooper	S.C.	2007
Southern Co.	Ga.	2008
UniStar	N.Y.	2008
Amarillo Power	TX	2007
Texas Utilities	TX	2007
NRG Energy	TX	2007
FP&L	TBD	2009
Several More	Varies	Varies

10/15/2007 9:56 PM

6

Dubai \$100+ Billion Construction



- 1 The Palm, Jebel Ali
- 2 The Palm, Jumeirah
- 3 The World
- 4 Gardens Shopping Mall
- 5 The Gardens
- 6 Jumeirah Islands
- 7 Jumeirah Lake Towers
- 8 Dubai International City



Global Warming

□ **“Global warming will cost the world up to seven trillion dollars in the next decade unless governments take drastic action soon.”**

□ “Failure to act quickly will trigger a global recession.”

Source: Sir Nicholas Stern's 700 Page British Government Report

□ **Driving changes**

□ LEED

□ 2007 Regulations increase diesel truck costs by 10% and reduced gas mileage.

– Truck sales expected to plummet by 40% in 2007

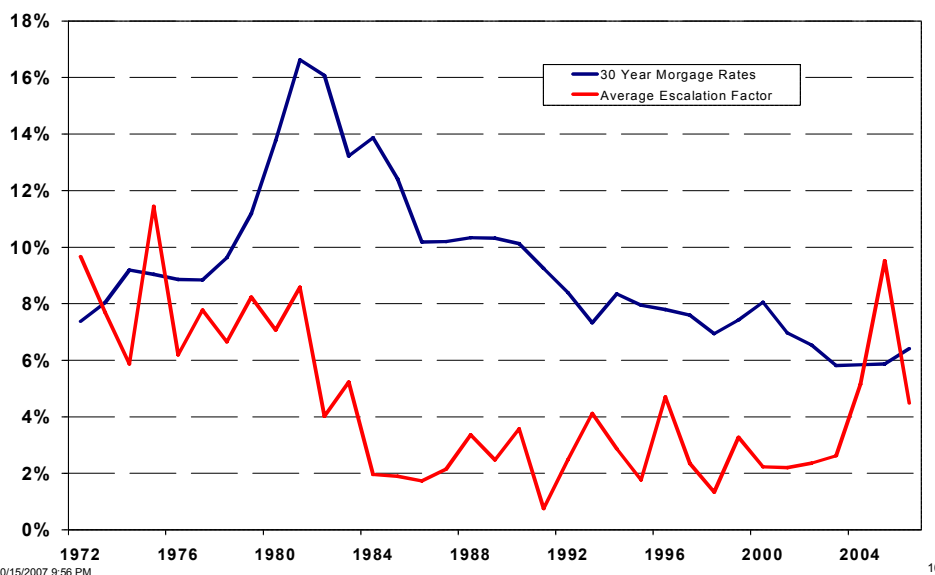
Many Short Term Indicators

- **Engineering News Record (ENR)**
 - Annual Forecast
 - 2007 Prediction Easing of Material Costs, Labor Costs Increases
- **Interest Rates**
 - Inverse relationship to construction costs
- **Architectural Billings Index (ABI)**
 - Tracks workload of 300 U.S. architectural firms
- **Baltic Dry Index (BDI)**
 - Tracks cost of transporting raw materials
- **Prior 12 Months increase of cost indexes**
 - Number of Bids submitted on recent projects
 - Many more
- All require tracking, analysis & interpolation

10/15/2007 9:56 PM

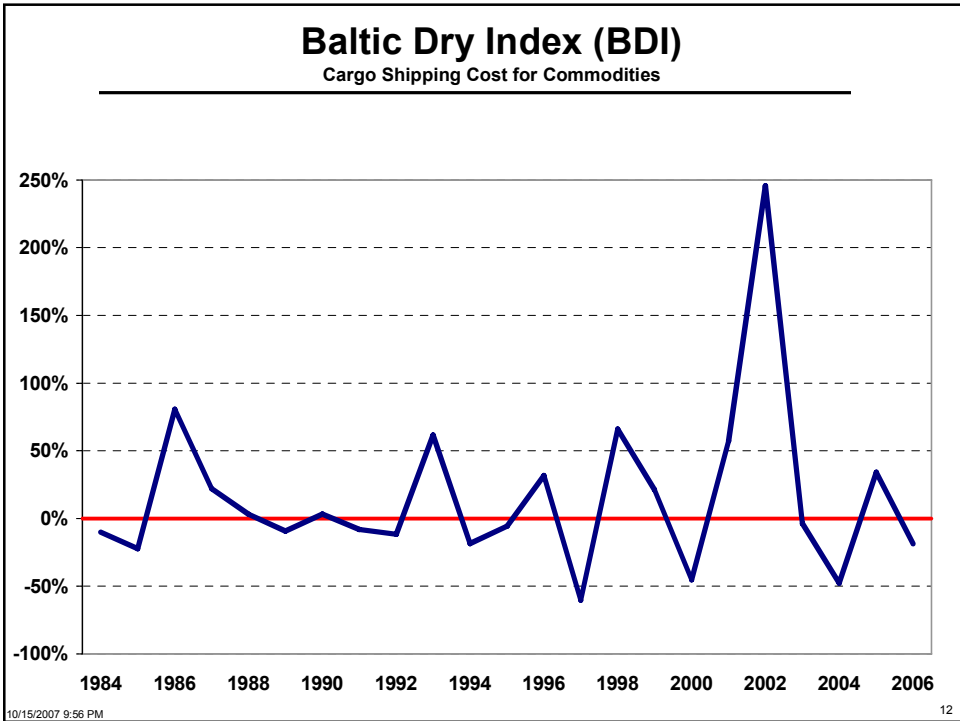
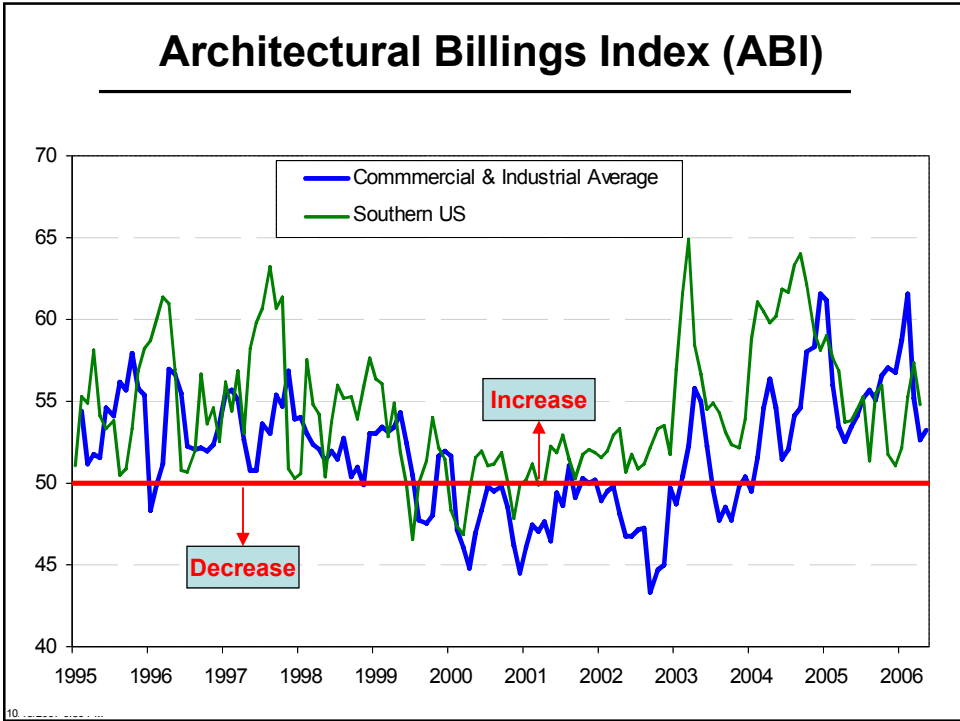
9

Interest Rates have Inverse Relationship with Escalation



10/15/2007 9:56 PM

10



Few Long Term Indicators

- **Federal Government OMB**
 - Bears weight of political agendas
 - Free!
- **McGraw-Hill Construction Market Forecasting Service (CMFS)**
 - 1 & 5 Year Forecasts for specific areas
 - \$400 - \$1,700 Each
- **Building Cost Information Service (BCIS)**
 - 5 Year Forecasts for United Kingdom
 - £150 Each
- Accuracy Unknown

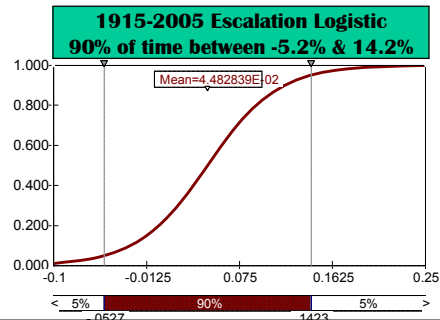
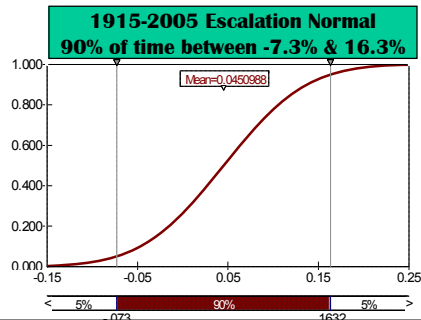


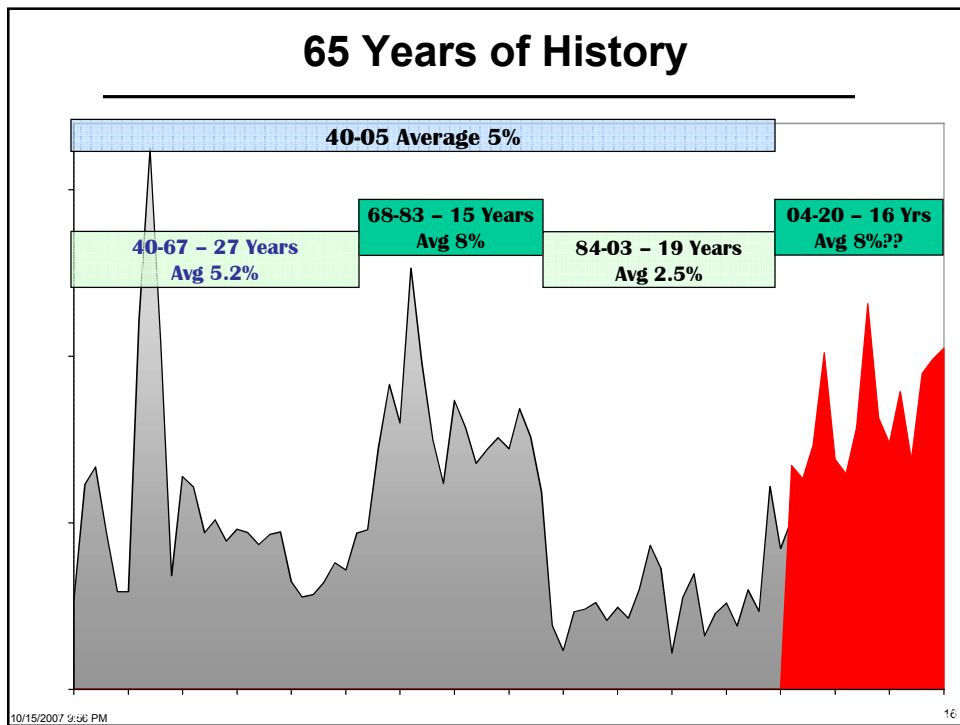
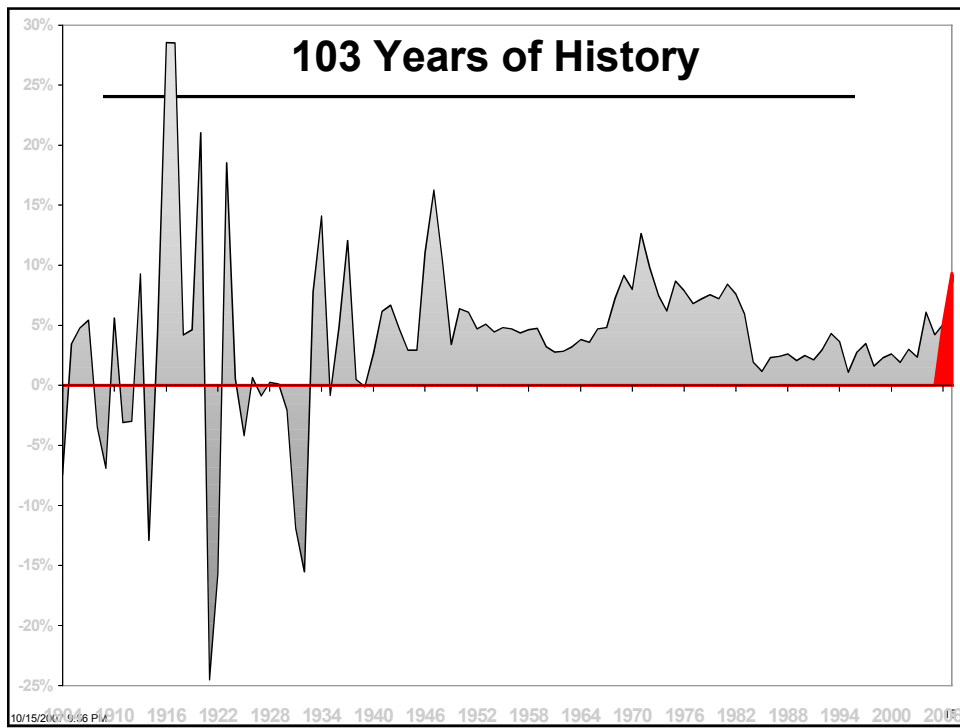
10/15/2007 9:56 PM

13

Contrary to Popular Opinion

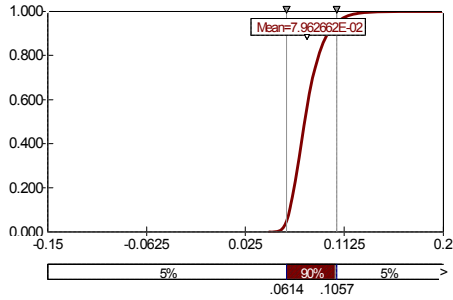
- **Recent Inflation is not that unusual**
 - ENR CCI annual average increase past 103 years
 - Over 3% - 60%
 - Over 4% - 51%
 - **Over 5% - 35%**
 - Over 6% - 31%
 - Over 7% - 23%
 - Over 8% - 16%
 - Over 9% - 13%
 - **Over 10% - 10%**



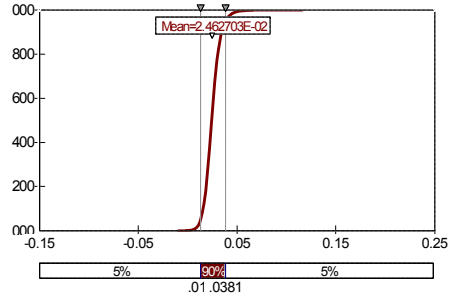


Distinct Cyclical Periods

1968-1983 Escalation
90% of time between 6.1% & 10.6%



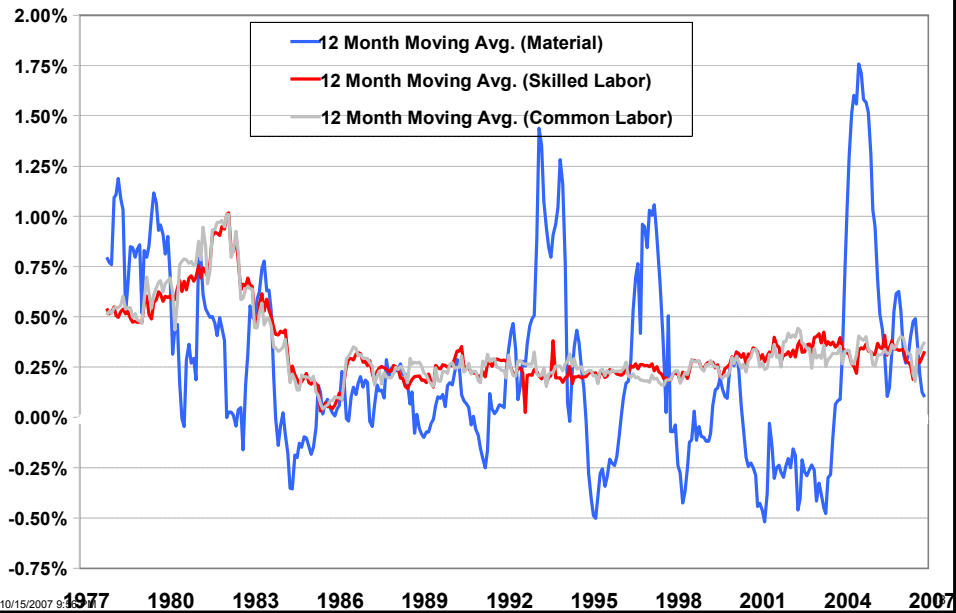
1984-2003 Escalation
90% of time between 1% & 3.8%



10/15/2007 9:56 PM

17

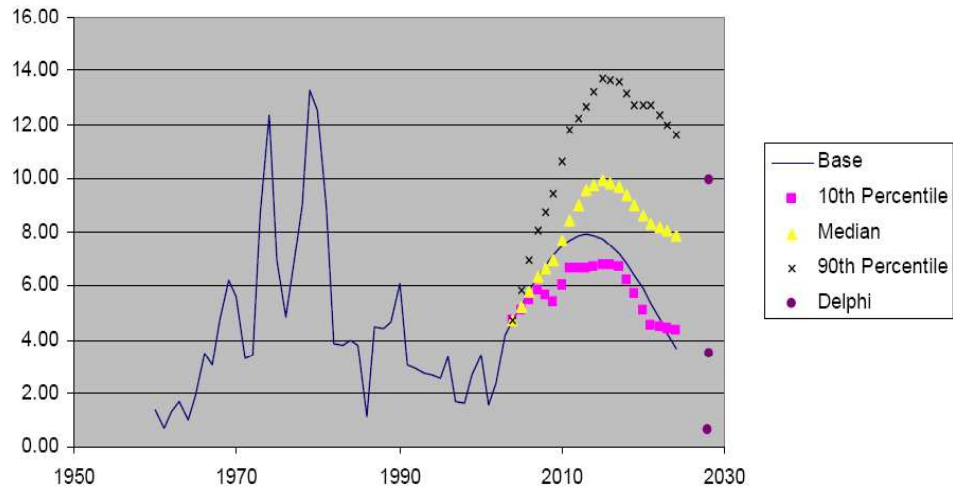
CCI 12 Month Moving Average



10/15/2007 9:56 PM

Society of Actuaries – Delphi Study

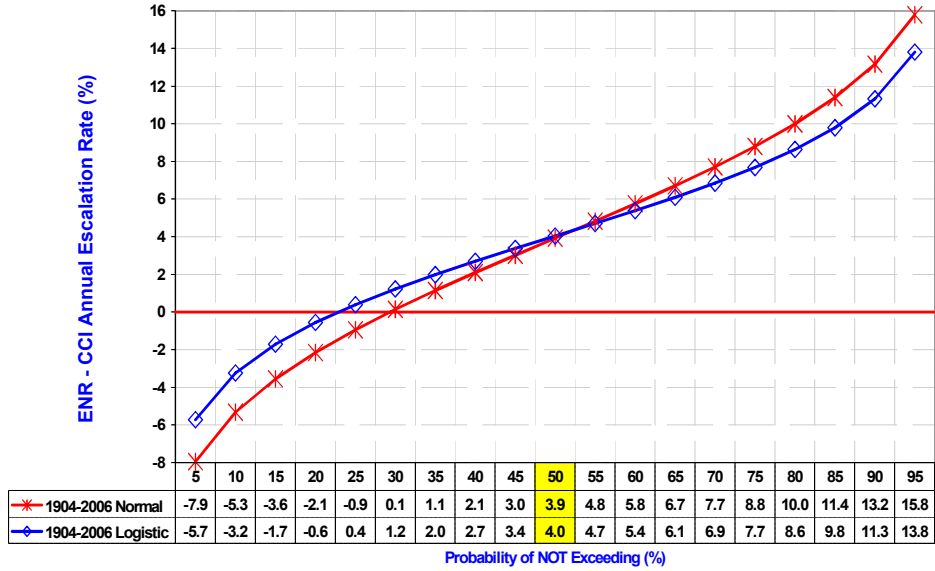
CPI Annual Change (%)



Another Way

- Management generally understands risk.**
 - Allow them to decide how much risk they are willing to accept.
 - Monte Carlo Simulation is a widely accepted method to deal with risk.

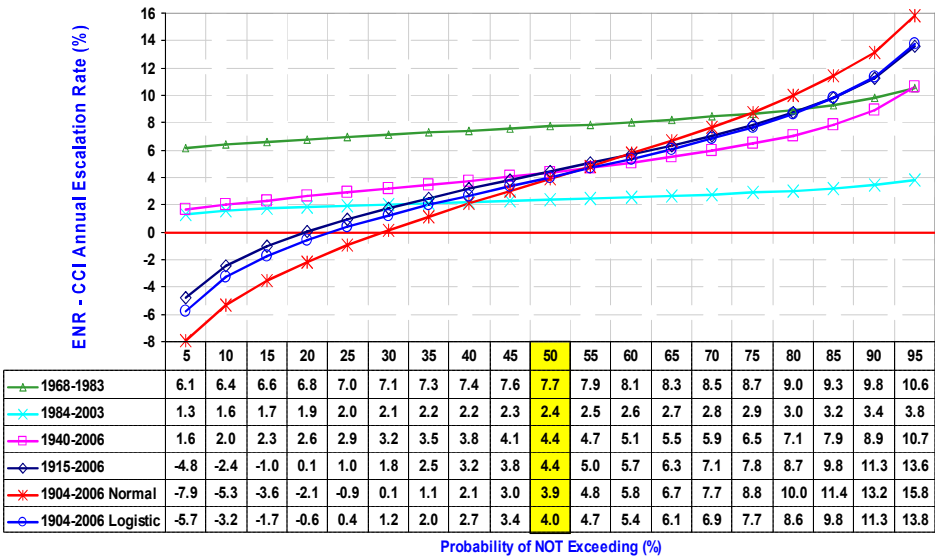
Another Way – Risk Based



10/15/2007 9:56 PM

21

Another Way - Risk Based



10/15/2007 9:56 PM

22

Conclusion

- **Predicting escalation is difficult, if not impossible.**
- **Escalation has been abnormally mild in recent history**
- **Cost increases have been underrunning historical averages**
- **Material prices have been the primary driver in recent cost increases.**
- **Anecdotal evidence is indicating pressure on wages**
 - Current trend of high costs and low wages can not continue.
 - Either material costs will decline or labor costs will increase.
- **Federal Reserve study suggests best indicator of next year's inflation is last year's inflation rate.**
 - Perhaps a 12-month moving average of the rate of change for the estimator's favorite index will prove a valid indicator of the current trend.
- **We appear to be entering a period of increased volatility.**
- **World economy is changing**
 - Emerging markets & hedge funds increasingly affecting commodity prices.

10/15/2007 9:56 PM

23



10/15/2007 9:56 PM

24