



---

The Space Congress® Proceedings

2016 (44th) The Journey: Further Exploration  
for Universal Opportunities

---

May 25th, 9:00 AM

## Space Life & Physical Sciences Research Division

Angel Otero

*Deputy Division Director of the NASA Space Life and Physical Sciences Research and Applications  
Division at NASA HQ*

Follow this and additional works at: <https://commons.erau.edu/space-congress-proceedings>

---

### Scholarly Commons Citation

Otero, Angel, "Space Life & Physical Sciences Research Division" (2016). *The Space Congress® Proceedings*. 3.

<https://commons.erau.edu/space-congress-proceedings/proceedings-2016-44th/presentations-2016/3>

This Event is brought to you for free and open access by the Conferences at Scholarly Commons. It has been accepted for inclusion in The Space Congress® Proceedings by an authorized administrator of Scholarly Commons. For more information, please contact [commons@erau.edu](mailto:commons@erau.edu).

**EMBRY-RIDDLE**  
Aeronautical University™  
SCHOLARLY COMMONS

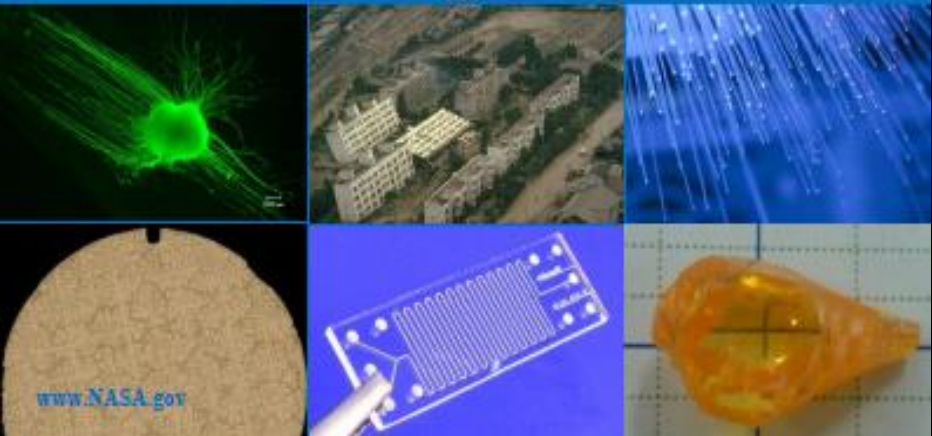


# Space Life & Physical Sciences Research Division

National Aeronautics and Space Administration



## NASA Materials Lab Strategic Plan



[www.nasa.gov](http://www.nasa.gov)



National Aeronautics and Space Administration



## GeneLab

Expanding the Impact of Biological Research in Space



Angel Otero, SLPS Deputy

[angel.m.otero@nasa.gov](mailto:angel.m.otero@nasa.gov)