



The Space Congress® Proceedings

2018 (45th) The Next Great Steps

Feb 27th, 3:15 PM

Blue Origin

Scott Henderson

Orbital Launch Site Director, Blue Origin

Follow this and additional works at: <https://commons.erau.edu/space-congress-proceedings>

Scholarly Commons Citation

Henderson, Scott, "Blue Origin" (2018). *The Space Congress® Proceedings*. 11.

<https://commons.erau.edu/space-congress-proceedings/proceedings-2018-45th/presentations/11>

This Event is brought to you for free and open access by the Conferences at Scholarly Commons. It has been accepted for inclusion in The Space Congress® Proceedings by an authorized administrator of Scholarly Commons. For more information, please contact commons@erau.edu.

EMBRY-RIDDLE
Aeronautical University™
SCHOLARLY COMMONS



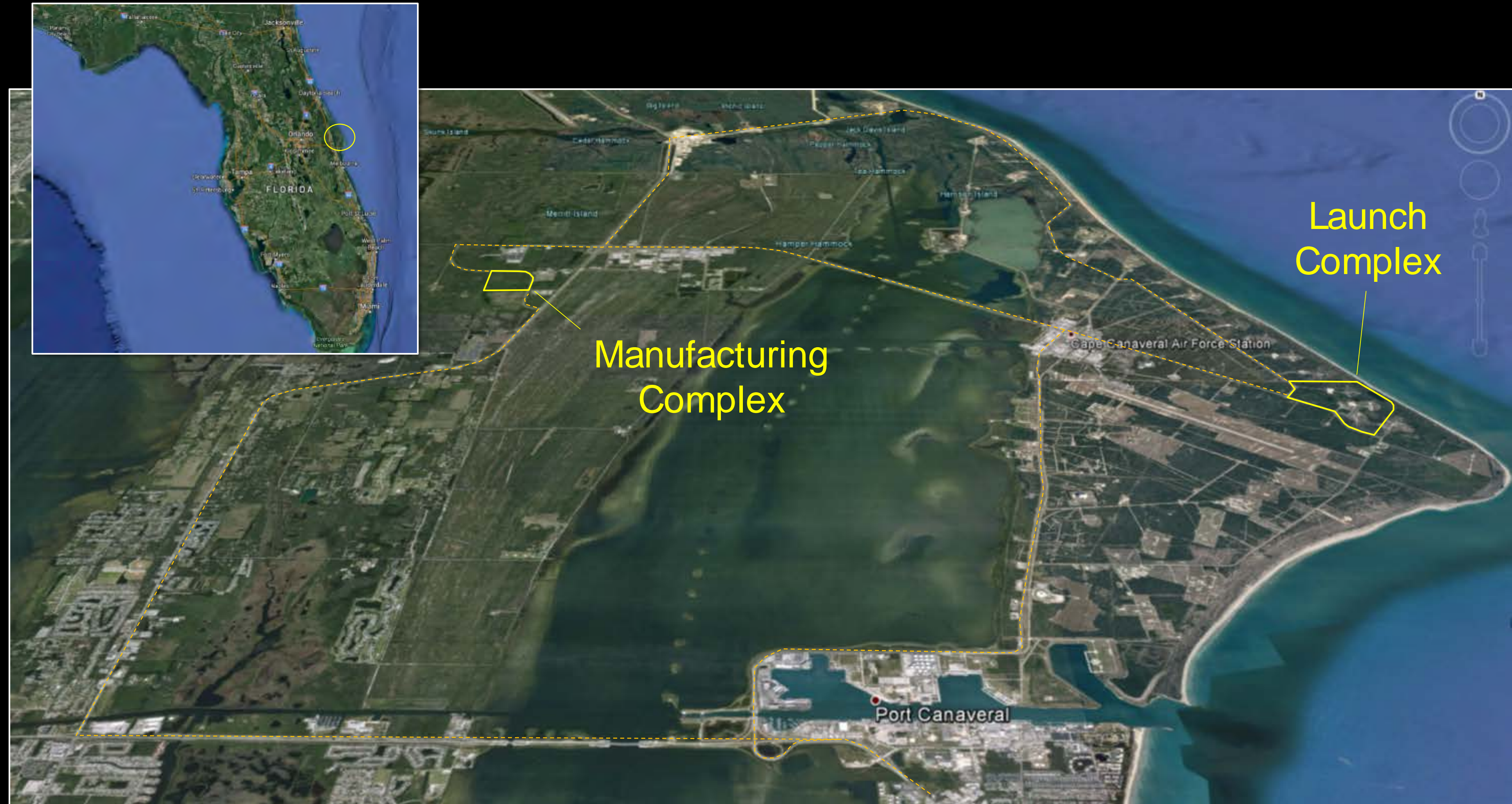
Blue Origin

SCOTT HENDERSON FEBRUARY 2018



Orbital Launch Site Location

Cape Canaveral Air Force Station/NASA Kennedy Space Center



Blue Origin Orbital Launch Site Elements

Only Launch Provider to Build, Test, Integrate, Launch and Refurbish Vehicles in Florida

Exploration Park, NASA Kennedy Space Center:

- Manufacturing Facility
- Launch and Mission Control Centers
- Astronaut Support Facilities
- First Stage and Space Vehicle Refurbishment



LC-36 & LC-11, Cape Canaveral Air Force Station:

- Launch Pad
- Integration Facility
- BE-4 ATP Test Stand



NEW GLEN MANUFACTURING COMPLEX



See Media 1 on metadata page to view video, or [Click Here](#)



Launch System Landscape



ANTARES

SOYUZ

ARIANE 5

ATLAS V

VULCAN

FALCON 9

FALCON HEAVY

DELTA IV HEAVY

NEW GLENN
2-STAGE

NEW GLENN
3-STAGE

NEW GLENN
LANDED BOOSTER

SATURN V



Multi-User Challenges

Regulatory Confidence

- “..rockets shouldn’t need new licenses to launch from two different states, or even two pads a few miles apart on Cape.” VP Mike Pence to National Space Council

Operational Efficiency & Schedule Assurance

- Current processes don’t support heavy launch cadence

Investment Confidence

- Significant capital investment demands long term agreements to support ROI

Infrastructure

- Current infrastructure sized for legacy programs -- modernization lagging



BLUE ORIGIN