

# Space Traffic Management

from the ground up

Presented November 5, 2014

Embry-Riddle Aeronautical University Space Traffic Management Conference

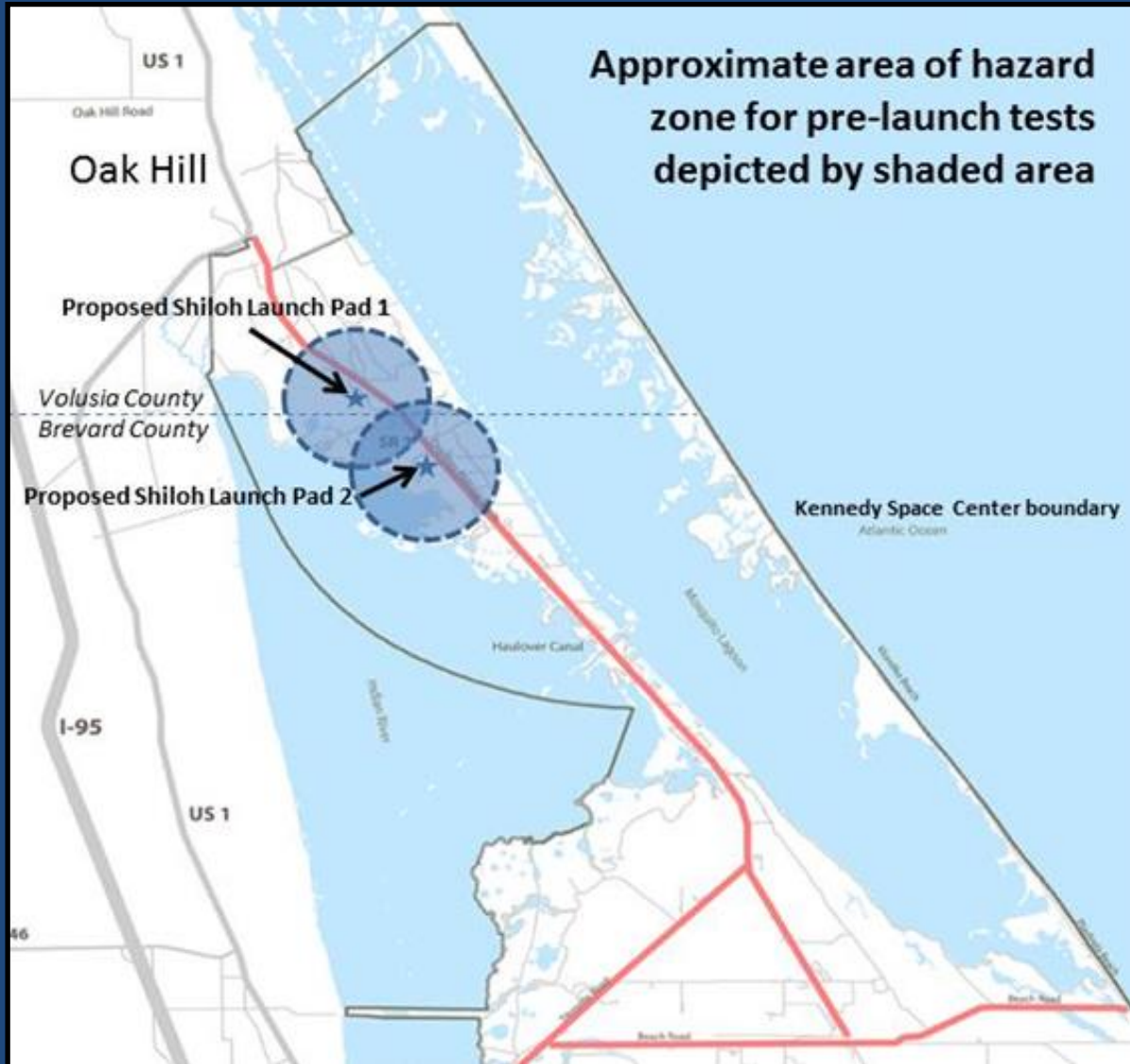
Daytona Beach, FL

# Space Traffic Management and Surface Transportation: Operating Concepts for Commercial Spaceports

Author: James E. Ball



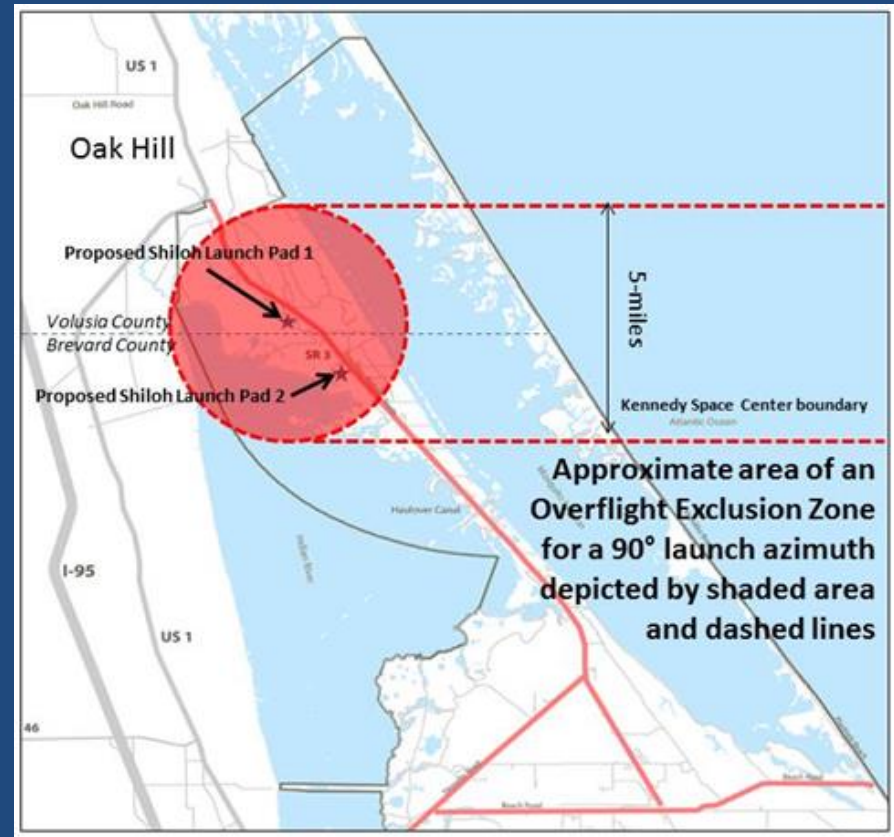
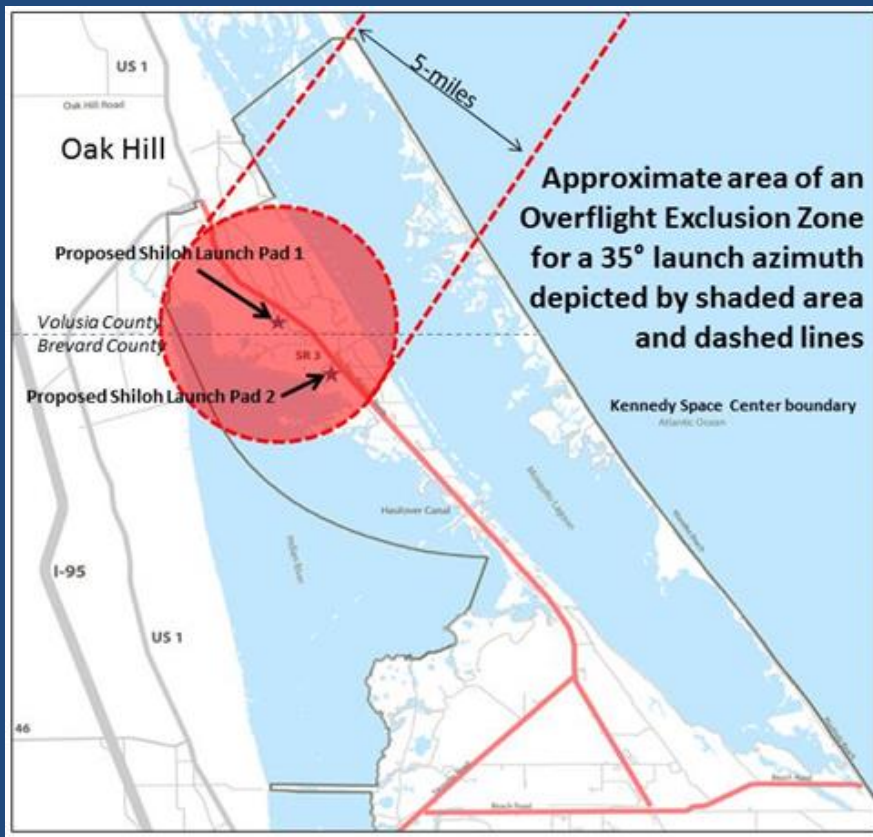
# Pre-launch Hazardous Test Operations



Falcon 9 Static Firing Test at Cape Canaveral



# The Overflight Exclusion Zone (OEZ): A Regulatory Traffic Lane



The OEZ associated with example launch trajectories for proposed spaceport at Shiloh, essential to early site planning and identification of surface transportation considerations

# Maritime Traffic

Spaceport  
Strategies LLC



## Practical solutions to minimizing conflicts

# Maritime Traffic

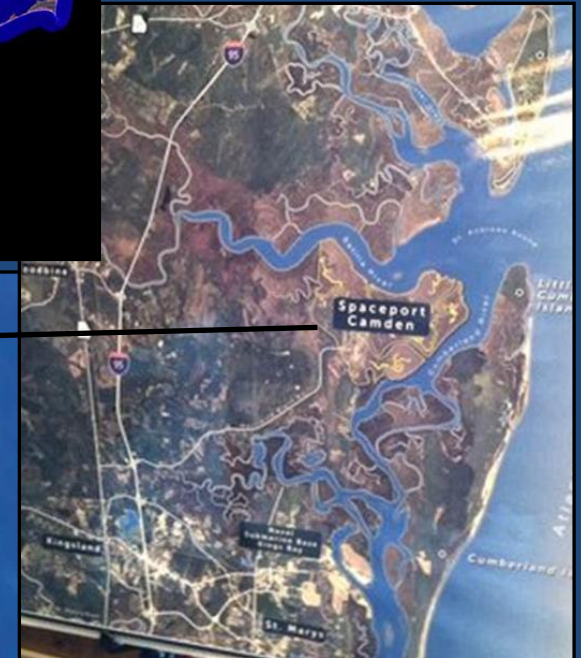
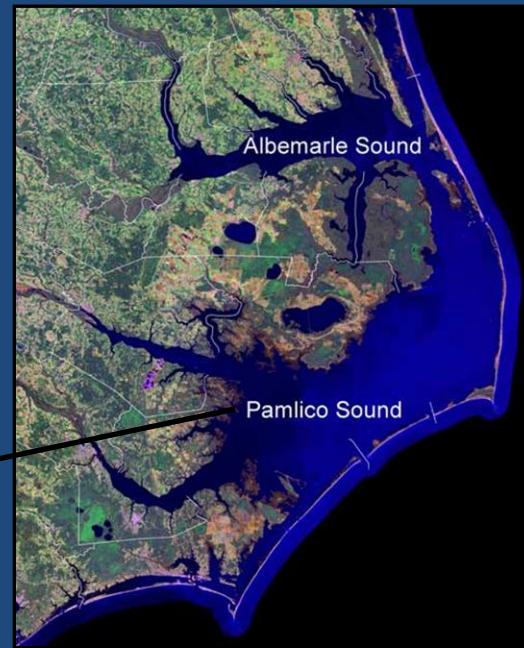
Spaceport  
Strategies LLC



## Defining hazard zones for offshore, inland waters

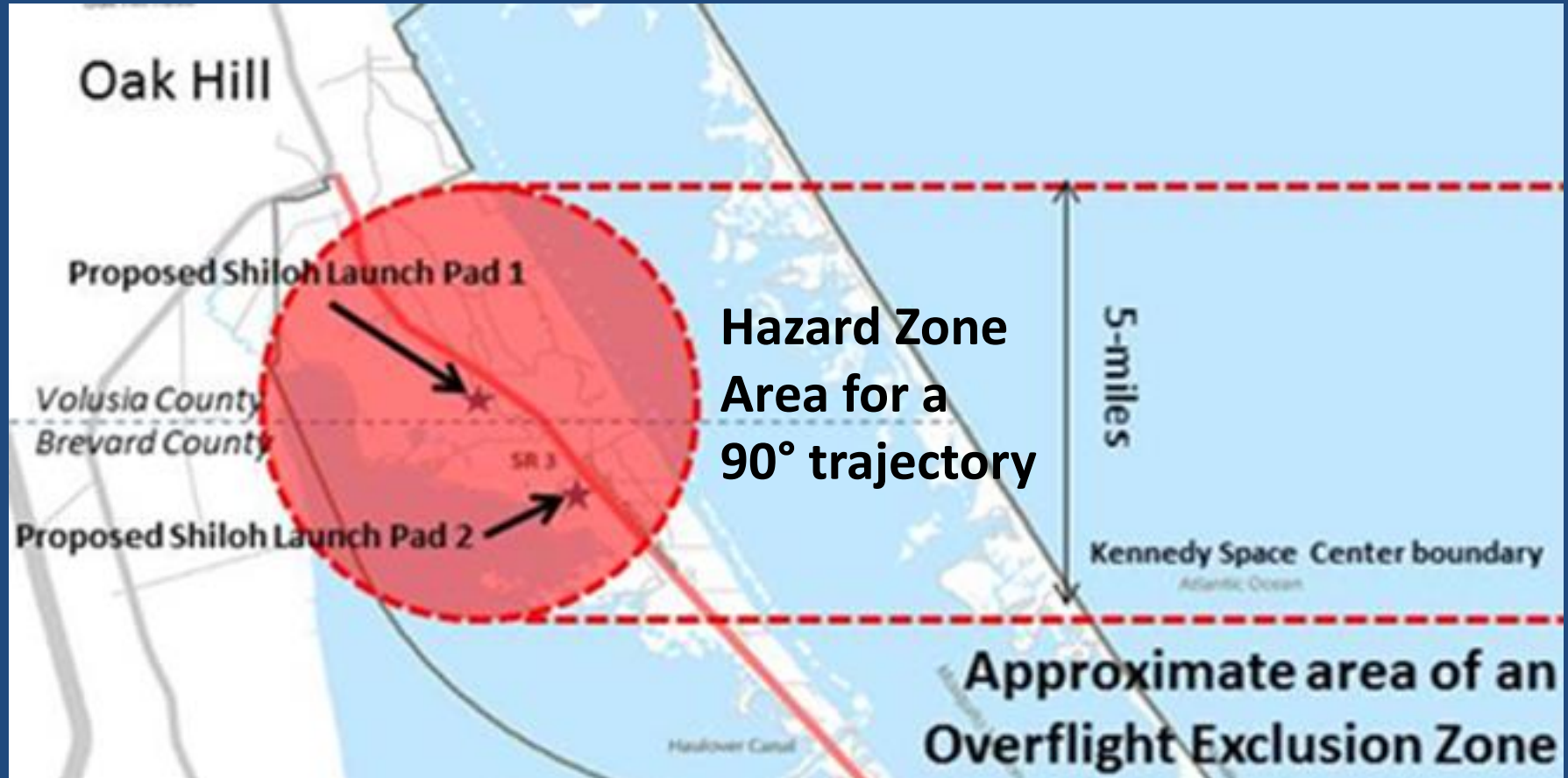


# Maritime Traffic



## Atlantic Intracoastal Waterway , inland waters

# Maritime Traffic



## Defining hazard zones for offshore, inland waters



# Railway Traffic



## Avoidance, schedule de-confliction

# Railway Traffic



## Operations planning for KSC railroad



# Highway Traffic



**Conflicts with major corridors are a non-starter**



# Foot Traffic



## Managing and minimizing potential interference

# Solving transportation conflicts



Some examples from surface systems...

# Solving transportation conflicts



...and airborne systems that have to avoid surface transportation conflicts



# However...



## It takes careful planning, and cooperation!



**Site planning and operations can minimize surface traffic and access interruptions**