

THE AVION

Sponsored by the Embry-Riddle Aeronautical University
Student Government Association

VOLUME VI

JANUARY 22, 1971

NUMBER 2

BAR-B-QUE SATURDAY

BEGINS AT 1 P.M.

E-RAU's first barbecue of the trimester will be held Saturday, January 23, from 1:00 P.M.-5:00 P.M., behind Dorm I. For those of you who were discouraged at the last barbecue because of long lines and poorly cooked food, cheer up! Tomorrow's barbecue will be catered and its menu will consist of barbecued chicken, cole slaw, baked beans, and rolls, to be served promptly at 1:00 P.M.-3:30 P.M. Beer and soda will be served from 1:00 P.M.-5:00 P.M. Entertainment will be provided by a band to be announced.

Bring your wives and dates. Remember, you've already paid for this activity through your S.G.A. activity fee, so be sure and plan to attend what promises to be an exciting afternoon. Also, remember



LINING UP FOR THE FOOD AT LAST SEMESTER'S BAR-B-QUE

to be sure to come early. Food will be served only until 3:30 P.M.

When S.G.A. social functions are planned, they do not always please everyone. If you are one of

these dis-satisfied people remember, we are always open for suggestions. If you have a suggestion, please give it to either Ed Briggs, box 463 or Jim Frye, box 711.

NEW DRESS CODE

Editor's note: (Once again these hallowed halls are blessed with a new dress code. Although it's not really new it is rewritten. The only part of the dress code that has changed is the section covering foot wear. Now it is permissible to wear sandals, but wait, that's not all. If you read further you will see that when you wear sandals you must also wear socks. I guess socks with sandals will make us all "A cut above average". What will President Hunt think of next?)

The image of Embry-Riddle as noted by prospective employers, prospective donors and the local community is, in part, formulated by the dress and appearance of those connected with the University

therefore, dress and appearance of all staff, faculty and students should reflect the professional objectives of Embry Riddle.

Since the nature of education at Embry-Riddle calls for a considerable amount of interaction between the participants; dress, grooming and personal hygiene should be of a nature which displays consideration for others. High standards of neatness, cleanliness, modesty, good taste and common decency should prevail. Personal appearance acceptable for the beach, the racetrack, or for so-called "hippie" areas will not be considered suitable for the campus.

Personal grooming, ap-

pearance and attire are in a sense the trademark of an individual. As long as an individual is not associated with or part of a group, his appearance is a personal matter. Whenever an individual elects to

CONTINUED PAGE 8

TABLE OF CONTENTS

INSIDE SGA.....	2
FLIGHT QUIZ.....	3
FRATERNITY.....	4
VETS ASSOCIATION.....	5
ERVAWA.....	5
DIVING EAGLES.....	6
SPORTS.....	8

speaking out

The AVION reserves the right to edit letters as we see fit in accordance with good journalistic practice. All letters must be signed, although names will be withheld upon request from the writer.



PRESIDENT'S CORNER



Dear Students,

Let me remind you that the first S.G.A. function this year is scheduled for Saturday, January 23, starting at 1:00 P.M. at Dorm I. Music will be by the Free Delivery and time will be allotted for the candidates in the upcoming senate election.

I have been checking the sign-up roster, and for the number of openings the number of candidates are low. We as students have to help ourselves. Again, the election will be held January 25 in the Student Center from 8:00am to 4:00pm.

If you have any constructive suggestions, feel welcome to drop them in my mailbox E-R box 606.

Your vote is the power of the students: use it or lose it.

Stan Widak

Stan Widak
President

INSIDE THE SGA

BY BOB DUDEN

Jan. 19--attendance was at a premium Tuesday as almost everyone showed up. Even old Stan decided to make it this week.

The meeting was called to order by Stan who, with his mastery of the English language, tripped all over

himself trying to pronounce big words like communicate. First business was brought up, and to the surprise of everyone, we are having a barbeque this weekend! Somewhere along the line, it was lost until a few observant senators found it Monday afternoon. There will be half a chicken for everyone, provided you are one of the first eight hundred to get there. Only eight hundred of the little fellows will be served. However, there will be more cole slaw and beans than in the past.

The executive reports were complete. Someone woke me up just in time to hear the Secretary, who thought it was very nice of the S.G.A. to provide a band at the Bar-Be-Que.

Jennifer Rinkle, very fashionable in total purple, turned the floor over to Dean Spears. He had a little trouble picking it up but, once he got control everything hit the fan. Colonel Spears admitted to bamboozling Danny Smock into believing open dorms were a reality. The Colonel finds it necessary to put stricter regulations on dorm visitors because, "some rare specimens were dragged off the beach," and somehow turned up in the dorms. Relating the insuing "fumigation" and the lack of coeds at Riddle to the situation, Dean Spears feels there should be tighter regulations. The S.G.A. took the ball but to no avail. After a frustrating, long-winded

debate which ended nowhere but in confusion, the game ended, final score, Dean -2, S.G.A.-0. It appears that the administrations' view of life at Riddle is: Make War; Not Love, or not in the dorms anyway.

From this point on, all business was downhill. The meeting was finally closed somewhere in the near future. So, until next week...

PLACEMENT INFO

BY Tom Parker,
Director of Guidance and Placement

I would like to take this opportunity to pass on some information that has come through the Guidance and Placement Office. During the brief time I have been associated with Embry-Riddle, I have discussed with many of you the present bleak situation concerning pilot employment.

Finally, I am able to pass on some encouraging information. The Bureau of Labor Statistics forecasts substantial growth in job opportunities despite the current depression in pilot employment. During the five year period between 1972 and 1977, the total number of pilots in the U.S. is expected to increase from 79,700 to 109,700. Air carrier pilots are expected to increase from 38,100 to 51,100; general aviation or business pilots from 39,200 to 55,700; and government pilots from 2,400 to 2,900. The largest increase is expected to increase from 61,000 in 1972 to 92,800 in 1977, an increase of 20,700. Also, the number of mechanics will increase from 134,200 for 1972 to 163,900 for 1977, a gain of 20,700.

The Bureau of Labor Statistics data indicates a slight reduction in employment from both pilots and mechanics until 1972, but the picture definitely looks brighter from that time on.

All those interested in part time employment at the Daytona International Speedway throughout the year, please stop by the Placement Office and fill out an application.

There is also an Air-port Manager position available in Georgia. The qualifications are Airfram and Powerplant Technician with managerial ability or Flight instructor with management ability.

CONTINUED NEXT PAGE

PLACEMENT CONT'D

The Guidance and Placement Office is located in the Administration Building. Please feel free to stop by anytime.

RIDDLE DONORS SAVE THE DAY

Like the U.S. cavalry coming over the hill in an Indian movie, four E-RAU blood donors responded within an hour to a need for rare A+ blood at the Red Cross. Nick Kropog, Paul Moser, Joseph Klausky, and Wade Kane may have saved a life due to their prompt action.

Any student who has this type of blood is urged to contact Dean Spears' office or the Red Cross IMMEDIATELY.

BLOOD SUGAR

(From ATA Bulletin No. 67-B-77)

At several recent ATA Flying Incidents Review meetings, the importance of pilots having something to eat or drink before a flight, particularly on early morning schedules, was discussed. The ATA Medical Committee concurs in recognizing this importance and recommends that information on this subject be brought to the attention of flight personnel.

Early morning takeoffs, short overnights, broken rest periods, as well as metabolic doldrums resulting from time zone differences between home base and turn around base are recognized as a part of the airline pilots' working conditions and much conversation has been made on a pilot's efficiency or proficiency under these conditions. In order to maintain this efficiency, it is recognized that an adequate level of blood sugar in the body must be maintained. A normal blood sugar concentration is necessary for proper body functions. It is known that blood sugar in the body rises after a meal, reaching its peak in thirty to sixty minutes and then begins to drop back down after that. Ingestion of simple sugar, such as candy, and table sugar, causes a

very rapid rise in the blood sugar content in the body within about thirty minutes followed, however, by a rapid fall which, in some cases, may drop below normal levels in about three to four hours afterward. Ingestion of protein generally causes a more gradual rise and fall with less variation in the height and depth of the blood sugar levels. It is suggested that a high protein meal or snack with a beverage could maintain blood sugar better than anything else.

Advise to pilots should be that they always eat upon arising and continue to have small frequent meals or snacks (at least every four hours) until the termination of their flight or work day. These meals or snacks should always contain an adequate amount of protein with modest amounts of carbohydrates and fat. It is suggested for a snack that something like a cheese or peanut butter sandwich with a beverage something like cocoa be used. The use of candy and sugar for "quick energy" although helpful in emergencies, should generally be discouraged. In this context, a beverage like cocoa is preferred over coffee. The reason is that while coffee with sugar will raise the blood sugar level for a very short time, it takes a beverage like cocoa to maintain it.

In summary, the ATA Medical Committee recommends that, particularly

on early morning schedules, a meal should not be foregone for the sake of an extra thirty minutes of sleep. Blood sugar in the body at the proper level is most important to the flight crew member's health, efficiency, and safety.

FLIGHT QUIZ

BY DONALD E. BUNDY

1. Knowing that your flight will last into the night, you check your position lights. According to regulations you must display your position lights at

- a) the end of civil twilight and the beginning of morning civil twilight
- b) Sunset and sunrise
- c) one-half hour after sunset and one-half hour before sunrise
- d) when the airport taxi and runway lights are operating.

2. Your aircraft and a weather front are approaching each other. You will pass over the surface position of the front before passing through the frontal surface in the case of:

- a) a slow moving cold front
- b) a warm front
- c) a warm front occlusion
- d) a fast moving cold front.

3. As a pilot you know that when you increase the angle of attack the center

CONT'D

LONDON
FOG

PETERS

GANT

STAGS

MEN and WOMEN
CAMPUS and COUNTRY CLOTHING

2010 South Atlantic Avenue • 252-1105

HANG
• TEN

Male

LARGEST SELECTION AVAILABLE

bells - flairs

square-toe boots

wide belts



wide ties

SALE! corduroy bush jackets

Bank Americard Master Charge

ΣΦΔ AHP Δ X ΣΧΔ

Sigma Phi Delta

by Bruce Rozett

With the start of the new trimester, Pi chapter has been very busy, after everyone told every one else about their vacation, we all started to play musical bedroom. When everyone was settled down, we got our houses cleaned up.

Friday night was our rush party for anyone wishing to pledge. The keg didn't last too long, but everyone enjoyed themselves. Anyone who wishes to pledge Sigma Phi Delta, the professional engineering fraternity, even if you were unable to attend the rush party, can come to our smoker, Friday at 7:00. Our two chapter houses are located at 519 & 525 South Ridgewood Ave.

Our pledge class of last trimester was initiated as brothers on Saturday at the Holiday Inn North. Congratulations are in order for brothers Jim Burchfield, Rich Simpson, Brett Spitalny Chase Bradley, and Gary Plassman. After the initiation was a banquet with a roast sirloin that could feed an army. And of course, there is the big party. Another keg of Bub was consumed as everyone really had a good time. At about 11:00pm all the heads gathered in a big circle in front of the stereo to listen to Woodstock. Heavy!

In keeping with its professional status, Sigma Phi Delta arranged for a C-124 from the Georgia Air Guard to come down Thursday for inspection. We are also trying to get a Huey Cobra to come down. More definite plans will be announced later.

Well, have a good week.

The Professionals

!!!NOTICE!!!

ELECTION JAN. 25. SIGN UP
IN S.G.A. OFFICES.

Alpha Eta Rho

BY BOB DUDEN

Once again AHP took to the spirits. This past Saturday we started out our new semester with three new kegs. Five hours and close to fifty prospective pledges later our Spring Rush Party ended with our Boy Scout Division trying to figure out how to light a fire. All was successful though and we expect a good pledge class this semester. If any interested bodies didn't make it to the party or Tuesdays' smoker and are interested in learning a little bit about us, please call 252-9503 and maybe someone might convince you pledging RHO isn't really as bad as it sounds.

Again, as always, a thanks to Jack and Ed for the sound that came pouring out the front door all night. We hear this was to be their final performance as retirement is just ahead. That's a shame. We'll miss the sounds of the Fifty-Niners Unlimited.

Coming up soon, your SGA elections. There are twelve seats open and AHP will be running a few of our boys. Listen to their views. RHO already has eight representatives and they've done an admirable job so far, so please give your support to our new candidates.

As is said, all's well that ends well so we'll stop right here! Good night Jeffie-poo. We still love you.

Delta Chi

BY KIMBLE

Welcome back and happy NEW YEAR from all of our brothers. Delta Chi is carrying the ball as number one from last trimester and, from all present indications, will keep it for quite a while. This may be considered as a biased statement by many. However, I base it

on past and present indicators with a projected trend.

Rushing has begun! If you are interested in pledging a number one fraternity, stop in at 427 S. Ridgewood Ave. tonight at 8:00 and decide for yourself.

A large percentage of our brothers have participated in the mini blood drive this past week. Brother Ed Fusco claims to have had eight pints of AB+ taken at one time. He has now substituted eight pints of Ripple Pink for eight pints of blood red.

Our new sign has been installed at the house after a month of gathering together all of the resources necessary for a good job. We have a few other projects planned for improving the house such as painting the trim and re-working the basement.

The Chi Delphias have been growing in number last trimester and their rush will be combined with ours tonight which should make for an interesting evening. For those who are not aware of it, Chi Delphia is the name of our little sister organization which has already received its charter from our national headquarters. Congratulations girls and keep up the good work.

Sigma Chi Delta

BY RUSS STRINE

Monday night Sigma Chi Delta began work for the spring trimester. Brother Tom Parker, who works in the Placement Office, is now an honorary brother, upon completing his initiation into Sigma Chi Delta. Welcome Tom, and congratulations from all of us.

Tuesday, January 19th was our second smoker of the trimester. We have been meeting with the prospective rushees and we believe that we are fortunate in getting to know such promising individuals.

This Saturday night will be our Spring Rush Party. Dates are welcome

CONTINUED NEXT PAGE

sigma chi delta
continued

for all brothers and rushees in attendance. I'm sure that the party will be a great success and will most likely turn out to be the best rush party we've planned.

Brother Mike Busch has made a contract with Daytona International Speedway Corporation to have 15 brothers work as parkers for a number of the upcoming races. This sounds like a lot of fun and we will also get seats to see the races. Seems to me like a good deal, so I became one of the first to volunteer! Come on brothers! We need you out there! Remember this is our first and most important money-making project of the NEW YEAR.

Our slave-driving house manager, Tom Reed, has asked that all brothers be present at 09:30 Saturday morning for an important work-party. There is clean up work to be done and the kitchen will be painted too. We must get things in shape for the upcoming weekend. So let's see everyone out there this week.

Last weekend the fraternity acquired a small sailboat! It is going to take some work but will be areal eye-catcher when we take it down to the beach. This project is tentatively scheduled to be completed sometime near Easter.

Monday and Tuesday, Sigma Chi Delta will be having an important guest-speaker from Sigma Chi International. Mr. Brandt McCool is going to meet with the chapter on Monday night and with the alumni on Tuesday night. These are some of the final steps required before the fraternity can go National as Sigma Chi.

ERVAWA

BY PEGGY KIDDER, SECRETARY

On January 12, E-RVWA got together at the Mural Room of DBF for a very informal meeting. After months of work on our Christmas party, we were all ready for this meeting.

As guest speaker, we had Mr. Robert Beil, of Mister Robert's Enterprise. He gave a very

interesting and informative talk on buying and caring for wigs. He also brought along wigs, hair pieces and falls to show us. Every wife there enjoyed listening to him.

Then we had a short business meeting to discuss when and where to turn in the 2,000 beer cans we have accumulated.

Our next meeting will be January 26, 7:30 P.M. at 740 Colfax, the home of Peggy Kidder. For directions, call 255-3523.

We adjourned our meeting to see slides of the Headstart Christmas party.

VETS ASSO.

On January 15, the officers and chairmen met at the Boars Head Lounge for a combined dinner/business meeting. Proposed plans and activities for this trimester were discussed.

Social events for this trimester include: trip to Cape Kennedy, Bush Gardens, beach party, Ponce de Leon picnic, and combined member/wife meetings.

TONIGHT JANUARY 22!

Welcoming party in the Boars Head Lounge at the Howard Johnson's Inn off I-95, 8:00 P.M. until--? All students, staff, and faculty who are veterans are invited, along with wives and dates. Hope to see you there!

Remember - buy and sell your books at our used book store.

Open: Tues. 8:00-4:00

Thurs. 8:00-4:00

DC-10. C5A FILM

A film showing of the C5A and the DC-10 will be featured by the American Institute of Aeronautics and Astronautics in a joint meeting of the student branch and the Senior Metropolitan Daytona Beach section on Wednesday, January 20th. The filming is open to the public and will be seen beginning at 7:30 P.M. in Building "B", Room 306, at the Academic Complex on the new campus at Embury-Riddle Aeronautical University off Clyde Morris Boulevard.

PROBATION vs GPA

By action of the faculty of the College of Aeronautical Studies and upon approval of the Academic Policies Committee of the Board of Trustees, the following policy is to become effective for all students September 1, 1971. In order to remain in good academic standing a student must maintain a 2.0 average from the first trimester. At any time a student's cumulative G.P.A. falls below 2.0 he is to be placed on academic probation.



TREASURE ISLE MOBILE HOMES



1634 SOUTH NOVA ROAD
DAYTONA BEACH, FLORIDA
PHONE: AC 904 / 767-2921

STUDENTS - Why Pay Rent?

INVEST IN A MOBILE HOME, PAY AS LITTLE AS \$75 A MONTH!!! BUILD UP YOUR EQUITY AND HAVE SOMETHING TO SHOW FOR YOUR TIME AT RIDDLE BESIDES A DEFICIT IN YOUR BANK ACCOUNT!! STOP BY FOR MOBILE HOME COUNSELING WITHOUT OBLIGATION AT TREASURE ISLE MOBILE HOMES.



Since this article was turned into the AVION on Tuesday, there is no way we can tell you the number of students enrolled in the SCUBA course which began Tuesday, January 19th, as advertised in the AVION and the club newsletter last week. We will, however, have a full report next week.

Tomorrow, the students enrolled in the SCUBA course will go to Blue Springs with their instructors for the swimming evaluation required by the course curriculum.



SITE OF LAST WEEK'S DIVE, SILVER GLENN.

at the same time, previously certified members of the Diving Eagles will be making their first cave dive of the new year, showing the newcomers just what goes on.

We would like to extend a sincere thank you to Mr.



ERAU DIVING EAGLES AT THE BEGINNING OF DIVE

Dave Cooper for his interesting slides and lecture at last Monday night's meeting. Everyone attending was very impressed with the quality and subject matter of his slides.

Reservations and deposits are now being accepted for the diving trip to Grand Cayman. If you are planning to go, please see Ralph Wicklund as soon as possible. E-R box 413 or phone no. 253-7201.

Next weeks' diving trip will be to the Florida Keys. This coming Monday night is the deadline for trip payments. See Ron Byerly as soon as possible to insure your seat. Dorm I-room 132.

On Saturday night, February 6th, the Diving Eagles will join the Daytona Beach Skin Divers Club for a night dive at Blue Springs. Although only certified divers will be allowed to dive, everyone is urged to bring a date or a friend who might be interested in diving. SCUBA students are also urged to attend. After the dive we will join the Daytona divers for supper at Manny's Pizza Parlor.

This is a good chance to rub elbows and swap yarns with experienced, personable divers.

ADMINISTRATION TO BUST "C" FREAKS

BY GARY ANDERSON

Ever since Dr. Linus Pauling announced that the common cold can be cured by a dosage of Vitamin C, it has been impossible to find any in the drugstores. Rumor has it that a substantial black market has sprung up. Using the logic that made them Colonels, our crack administration decided to go right to the source and bust the real culprits, the users. To find out about this, I interviewed Dean Dan Deadly, Dean of drugs here at Riddle.

"Dean Deadly, how do you propose to catch the users?"

"Well, they're pretty easy to spot. They sniffle a lot and sometimes they have a hacking cough."

"Yes, but that's not proof."

"We've hired several hundred work-study undercover narks to get in good with them and find out who's using the stuff."

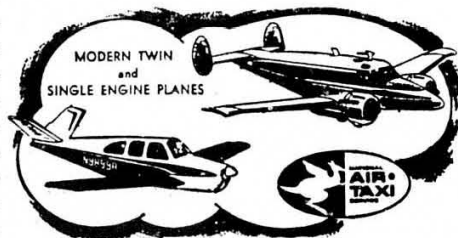
"Who could you find that would be low enough to bust his own classmates?"

CONTINUED PAGE 8

VOLUSIA

AVIATION SERVICE, INC.

MUNICIPAL AIRPORT
VOLUSIA COUNTY'S OLDEST FLYING SERVICE



NO minimum flight time required for solo

HOW!

You can Rent

Beechcraft	Cessna	Piper	American
Bonanza F35	150	Cherokee 140	Yankee
N35	172	Apache	

SPECIAL CLUB RATES LOW PRICES

\$25 initiation fee
\$10 per month dues

Flight Examiner on Staff for: Private
Commercial
Instrument

PA-18 & PA-23 Multi-Engine

AIRCRAFT LISTINGS

A/C#	REG. #	SERIAL #	YEAR	MANUFACTURER	MODEL	COLOR	GROSS WGT.
11	N-9156-R	AF665	1952	Beechcraft	C45-H	Light Blue	8750
12	N-8232-E	AF606	1952	Beechcraft	C45-H	White & Blue	8750
16	N-116-J	A948	1953	Beechcraft	D-18S	Red & White	8750
22	1213M	A-4209	1942	Douglas	C-47A	Gray & White	26200
48	N-7250G	58590	1970	Cessna	172	Red & White	2300
49	N-7420G	59120	1970	Cessna	172	Blue & White	2300
51	N-6795V	700088	1970	Mooney	M20C	Maroon & Cream	2575
52	N-9463V	700057	1970	Mooney	M20C	Blue & Cream	2575
61	N-78444	57620	1969	Cessna	172	Yellow & White	2300
62	N-79292	58026	1969	Cessna	172	Blue & White	2300
63	N-79316	58041	1969	Cessna	172	Yellow & Gold	2300
64	N-79320	58045	1969	Cessna	172	Green Metallic & White	2300
65	N-79322	58047	1969	Cessna	172	Yellow & White	2300
66	N-79419	58070	1969	Cessna	172	Red & White	2300
67	N-79564	58173	1969	Cessna	172	Yellow & White	2300
68	N-79880	58215	1969	Cessna	172	Red & White	2300
69	N-79975	58296	1969	Cessna	172	Yellow & Gold	2300
71	N-74316	59131	1970	Cessna	172	Green & White	2300
72	N-84105	58335	1969	Cessna	172	Yellow & White	2300
73	N-46123	57055	1963	Cessna	172	Light Blue & White	2300
74	N-35401	56748	1963	Cessna	172	Brown & White	2300
75	N-35630	56905	1963	Cessna	172	Light Blue & White	2300
76	N-84107	58336	1969	Cessna	172	Dark Blue & White	2300
77	N-84465	58432	1969	Cessna	172	Dark Blue & White	2300
78	N-46100	57041	1963	Cessna	172	Red & White	2300
79	N-8345L	56545	1963	Cessna	172	Light Blue & White	2300
81	N-46176	57091	1963	Cessna	172	Red & White	2300
82	N-84141	58352	1969	Cessna	172	Avocado & White	2300
83	N-84176	58367	1969	Cessna	172	Red & White	2300
84	N-35558	56833	1968	Cessna	172	Dark Blue & White	2300
85	N-35559	56834	1968	Cessna	172	Goldenrod & White	2300
86	N-35562	56837	1968	Cessna	172	Goldenrod & White	2300
87	N-7290G	58990	1970	Cessna	172	Black Cherry & White	2300
88	N-46106	57045	1963	Cessna	172	Avocado & White	2300
89	N-46229	57122	1963	Cessna	172	Goldenrod & White	2300
91	N-46053	57014	1963	Cessna	172	Dark Blue & White	2300
92	N-35392	56747	1968	Cessna	172	Red & White	2300
93	N-35456	56779	1968	Cessna	172	Cranberry & White	2300
94	N-35531	56818	1968	Cessna	172	Racing Green & White	2300
95	N-35631	56875	1968	Cessna	172	Light Blue & White	2300
96	N-35637	56878	1968	Cessna	172	Light Blue & White	2300
97	N-46042	57007	1963	Cessna	172	Red & White	2300
98	N-46145	57072	1968	Cessna	172	Dark Green & White	2300
99	N-35349	56725	1968	Cessna	172	Dark Green & White	2300
37	N-1737L	330-0037	1964	Cessna	330	Yellow, Black & white	2200

HONDA CITY

**FOR THE PERSON WHO WANTS THE BEST
DEAL AND FINEST SERVICE IN TOWN**

**open
9 till 5:30**

**PARTS • ACCESSORIES
REPAIRS • HELMETS**

**call
255-6441**

**HONDA
PENTON**



**HUSQVARNA
SUZUKI**

825 Ballough Road Daytona Beach

"C" FREAKS CONT'D

"Does it work?"

"Oh sure, just yesterday, a guy busted his wife and their cocker spaniel."

"Is Vitamin C addictive?"

"Definitely. We've had stories of freaks who can't get tablets and actually go out to the orange groves and shoot up on the raw stuff."

"That's must be gruesome!"

"Why of course, did you ever try to get a grapefruit in a hypodermic needle?"

"Is Vitamin C harmful?"

"We're not sure yet, but we know it leads to stronger stuff like aspirin and sometimes even Contact."

DRESS CODE CONT'D

become part of a group, he immediately surrenders some personal freedom for the privilege of belonging. Some cults, groups or teams require a specific uniform, clubs may require an emblem, blazer cap or other symbol of belonging. Still other organizations will not require specific dress or appearance but will expect certain acceptable standards to be followed such as "Coat and tie required" or "No bathing attire permitted in lobby".

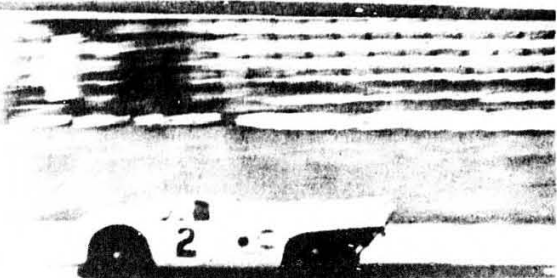
Any individual who succeeds or expects to succeed in aviation must be a "cut above average." When ever he allies himself with an aviation activity he will begin to feel pride and a sense of belonging. In order to succeed, he must believe in himself and what he is doing, and he will be expected to deserve the recognition he is accorded as a member of the aviation community.

Embry-Riddle as an aviation oriented university is obligated to provide every student the opportunity for total involvement as well as formal education. Total involvement includes such things as self government experience (SGA), interrelations with aviation companies and activities, exposure to aviation leaders and employees and encouragement

CONTINUED NEXT PAGE



sports



LAST YEARS 24 HR WINNER- GULF RACING TEAM PORSCHE

FRIDAY, JANUARY 29-1:00p.m.-Third Annual Brundage International Formula Vee race over 3.81-mile course. Admission \$5.00

SATURDAY, JANUARY 30-3:00p.m.-Start of the 24 HOURS OF DAYTONA International championship race over 3.81-mile course. Admission: Infield \$10.00; Grandstands (unreserved) \$7.00; Paddock tags (sold in advance-limited number) \$15.00

SUNDAY, JANUARY 31-3:00p.m.-Finish of 24 Hours of Daytona
SATURDAY, FEBRUARY 6-1:00p.m.-Qualifying trials for ARCA RACE. 2:00p.m. - Qualifying trials to determine pole positions for DAYTONA 500

SUNDAY, FEBRUARY 7-1:00p.m.-Eighth Annual ARCA Late Model Stock Car Race. Admission: Infield \$5.00 Grandstands \$6.00

FEBRUARY 8-9-10-Practice and qualifying for NASCAR races
THURSDAY, FEBRUARY 11-1:00p.m.-First of two 125-mile NASCAR FIA Grand National to determine starting positions for Daytona 500. Admission: Infield \$5.00 Grandstands (unreserved) \$8.00

FRIDAY, FEBRUARY 12-1:00p.m.-Third Annual FLORIDA CITRUS Grand American Challenge race over 3.81-mile course. Admission: Infield \$5.00; Reserved seats \$6.00, \$10.00 \$15.00

SATURDAY, FEBRUARY 13-1:00p.m.-Seventh Annual DAYTONA PERMATAX 300 for NASCAR Late Model Sportsman cars. Admission: Infield \$5.00; Reserved seats \$6.00, \$10.00, \$15.00 (Check ticket order form in brochure)

SUN DAY, FEBRUARY 14-12:30p.m.-Thirteenth Annual DAYTONA 500 NASCAR-FIA Late Model Stock Car Race. Admission Infield \$6.00; Reserved grandstand \$8.00, \$10.00, \$15.00 \$20.00, \$25.00, and \$30.00. (Check ticket order form in brochure)

!!NOTICE!!

STUDENTS INTERESTED IN
PLAYING BASEBALL. THERE
WILL BE A MEETING IN ROOM
403 MONDAY, JAN. 25, 1971
AT 4:00 P.M.



to participate in social, athletic, professional and community affairs. It is the University's responsibility to provide guidance in all of these activities as part of the whole educational process.

Individuals who have been exposed to the aviation community or who recognize their associates do not need guidance. It is not intended that a university should tell its faculty, staff and student how to dress, but it is incumbent upon the university to provide guidelines for the benefit of the few who might need them.

SPECIFIC APPEARANCE AND DRESS POLICY

All Faculty, staff and students"

1. Must wear shoes on the campus. (When open-toed shoes are worn, socks are required.)
2. Will not wear undergarments in place of outer garments.
3. May not wear trousers or shorts that are "cut off" or "torn off" on campus - expect in dormitory areas.
4. Are to be clean with hair well groomed.
5. Should present an appearance at all time which will reflect favorably upon themselves, their associates, the university and the aviation community.

Safety in the many aviation activities at Embry Riddle is of paramount importance; therefore, individual dress should also be in accordance with the safety requirements of the task being performed.

While it is incumbent upon each individual to insure his own compliance with the Embry-Riddle Appearance and Dress Policy, it is the general responsibility of everyone to insure compliance with the guidelines set forth herein and the dictates of good taste. This can usually be accomplished informally by bringing any discrimination of the individuals involved.

In the even specific instances of indiscriminate dress and appearance occur, not in consonance with the intent of, or not in keeping with the Appearance and Dress Policy con-

HAIR NOT
BELOW EYEBROWS
(EYEBROWS
SHAVED OFF)

SIDEBURNS
NO LOWER
THAN EAR

NEATLY
TRIMMED MUSTACHE
(UUCH!)

HAIR LENGTH
NOT DOWN TO
COLLAR

SPECIALLY
DESIGNED CHEST
HUGGER COLLAR

LOVE BEAD
TIE CLASP

ALMOST FULL-
LENGTH PAISLEY
BELL BOTTOMS

PINK AND
CHARTREUSE

LEATHER (NOT
CANVAS) FOOTBALL
CLETES

SOCKS - HOLEY,
UNMATCHED

tained herein, positive corrective action will be taken as follows:

1. Corrective action will be recommended to the individual involved by the person observing the discrepancy (it is assumed that students will be confronted by their peers out in the main, it is considered a responsibility of the faculty to initiate further action if the individual concerned fails to heed the recommendation of his peers or mentors.
2. If an individual refuses to take the correc-

tive action he will be reported to the appropriate office as follows:

- A. FACULTY - To the Dean of Faculty
- B. STAFF - To the Business Administrator
- C. STUDENTS - To The Dean of Students

Upon receiving a report an investigation will be made by the respective office concerned. The individual will be directed to adhere to the spirit and letter of this policy statement. Should he/she indicate non-compliance,

CONTINUED NEXT PAGE

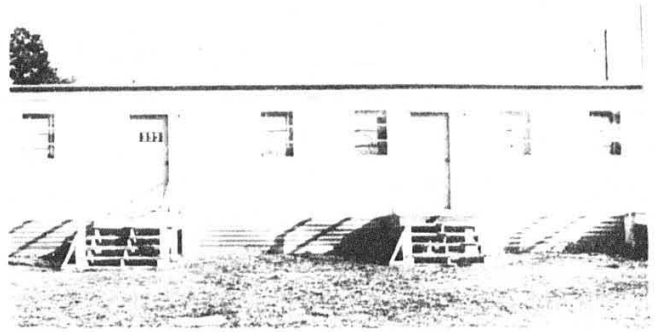
DRESS CODE CONT'D

the next step toward realization of his/her responsibility is to appear before the proper committee for review of the case and a committee recommendation to the office of the president. (A special student committee for this purpose is hereby authorized to be appointed by the Student Government Association and approved by the Dean of Students.)

This policy is based upon the recommendations of representatives of the faculty, staff and students whose untiring efforts on behalf of the University are hereby acknowledged with much appreciation.

This policy is primarily for the purpose of insuring that the University is meeting its responsibilities as set forth in the Bulletin. This Policy Statements, or appropriate excerpts from it, will be promulgated by the Dean of Students in whatever forms are deemed necessary. Present faculty, staff, and students are hereby apprised of the Policy. Any individuals intending to become associated with the university will be apprised of the Policy before a part of the university.

The cooperation of each and every member of this university for the benefit of all is expected and will be appreciated.

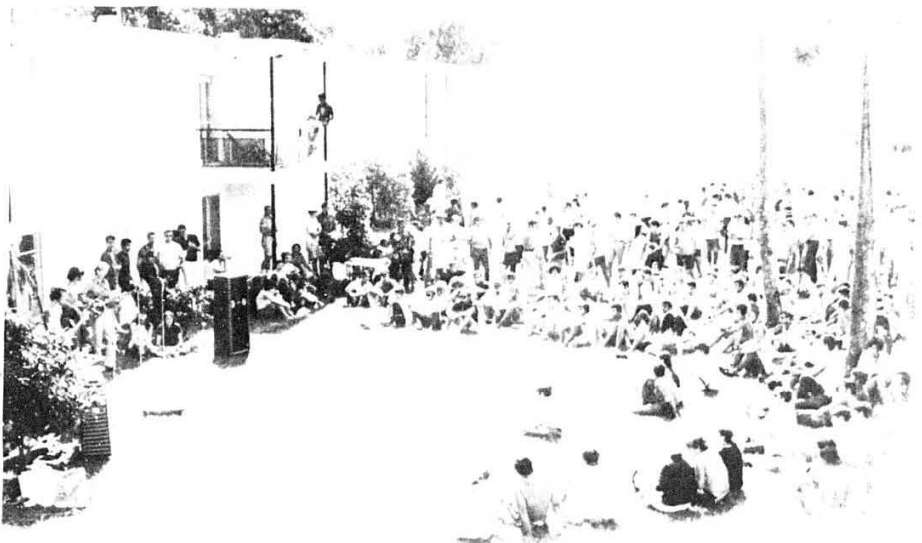


WHAT'S A NICE GIRL LIKE YOU DOING IN A PLACE LIKE THIS? JENNY



SGA ELECTIONS MONDAY

\$2.00 ON #6 IN THE 8TH RACE



FREE DELIVERY PLAYS FOR LAST FALL'S BAR-B-QUE

FLIGHT QUIZ CONTINUED

of pressure:

- a) moves rearward
- b) remains stationary
- c) moves forward

4. Various atmospheric processes modify an air mass. Select those that decrease the stability of the air mass:

- 1) warming the air mass from below
- 2) sinking of the airmass
- 3) addition of water vapor
- 4) cooling the airmass from below
- 5) lifting the air mass
- 6) removal of water vapor

- a) 1,3,5
- b) 2,4,6,
- c) 1,4,6,
- d) 2,3,5

5. Taxiing out to the runway on an IFR flight you check your instruments and determine that certain corrections must be made prior to your flight. Select those below that must be corrected by regulations:

- 1) the attitude indicator indicates 2 degrees of bank when taxiing
- 2) the altimeter kollsman window indicates -.02 in. Hg. lower than current altimeter setting when the altimeter

er is set at field elevation

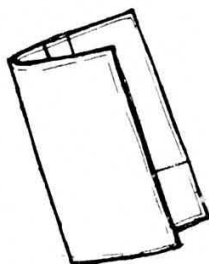
- 3) the ball in the Turn & Bank instrument is stuck in its race
 - 4) the clock sweep second hand is stuck in position
 - 5) the vertical speed indicator shows 100 feet per/min. climb
 - 6) the amp meter shows continuous discharge regardless of RPM setting
- a) 1,3,5
 - b) 2,3,6,
 - c) 3,4,6
 - d) 1,2,4

ANSWERS TO THE FLIGHT QUIZ

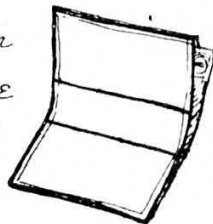


SEE YOU AT THE BARB-B-QUE SATURDAY

We also make wallets...



top
grain
or
suede
\$6.00
ea.



The SANDAL SHEAF • 811 Main St.

STORE HOURS • 10:00 a.m. - 4:00 p.m.
Monday - SaturdayGet your **SEAPLANE RATING** now!from
PELLIM STROPS INC.
Florida Seaplane School
at Bunnell Airport

GET YOUR SEAPLANE RATING NOW, FROM PELLIM STROPS INC., FLORIDA SEAPLANE SCHOOL AT BUNNELL AIRPORT... ONLY 19 MILES FROM YOU! YOUR ENROLLMENT AT ERAU FOR THE BEST IN FLIGHT TRAINING... NOT... USE IT WAS THE LOWEST IN PRICE, REMEMBER, YOU ALWAYS GET WHAT YOU PAY FOR... OFFER THE BEST, NOT THE CHEAPEST, SEAPLANE RATING COURSE.

WE USE A MODERN, HIGH PERFORMANCE AIRPLANE ON FLOATS, FOR STUDENT TRAINING, A 1970 CITABRIA 7-GCBC. FOR THIS COURSE, NOTHING BUT THE BEST EQUIPMENT AVAILABLE PLUS EXPERIENCED AND COMPETENT INSTRUCTORS... H.E. "SPEEDY" BERNARD, FAA EXAMINER DANA BERNARD, CFI-A, JACK MILLER CFI-A.

WHY PAY MORE?...FOR WHAT?

CHECK OUR SYLLABUS AND SEE FOR YOURSELF:

1. BASIC WATER TAXI
2. CROSS WIND TAXIING
3. TAXIING ON THE STEP/PLANNING PRACTICE
4. AIRWORK: MEDIUM & STEEP TURNS, STALLS AND SLIPS TO LANDING
5. NORMAL WATER TAKE-OFFS & LANDINGS (POWER ON AND POWER OFF)
6. X-WIND TAKE-OFFS & LANDINGS (LATEST TECHNIQUES)
7. EMERGENCY PROCEDURES
8. ROUGH WATER TAKE-OFFS AND LANDINGS (FULL FLAPS OUT AND 1/3 OF VSO FULL FLAP APPROACH)
9. GLASSY WATER TAKE-OFFS & LANDINGS (INCLUDING STEP TURNS TO TAKE-OFF AND ONE FLOAT TAKE-OFFS)
10. DOCKING, SAILING AND BEACHING
11. WEIGHT AND BALANCE
12. AIRCRAFT PERFORMANCE DATA SHEET
13. EQUIPMENT LIST
14. INSTRUCTIONS FOR COPING WITH BAD WEATHER IN A SEAPLANE
15. SEAPLANE PILOTS RESPONSIBILITY WHILE OPERATING ON THE WATER
16. X-C PLANNING FOR SEAPLANE PILOTS
17. OPERATING IN RIVERS, WHERE THERE ARE CURRENTS; SMALL BODIES OF WATER AND WHERE THERE ARE NO BASES AVAILABLE
18. CARE AND MAINTENANCE OF THE SEAPLANE AND THE FLOATS
19. CERTIFICATE OF COMPLETION AWARDED, SUITABLE FOR FRAMING
20. LIST OF OPERATORS & FIRMS USING SEAPLANE PILOTS & INSTRUCTORS
21. LETTER OF RECOMMENDATION TO ANY OF THE ABOVE

NEW COST!!

NOW ONLY \$135.00

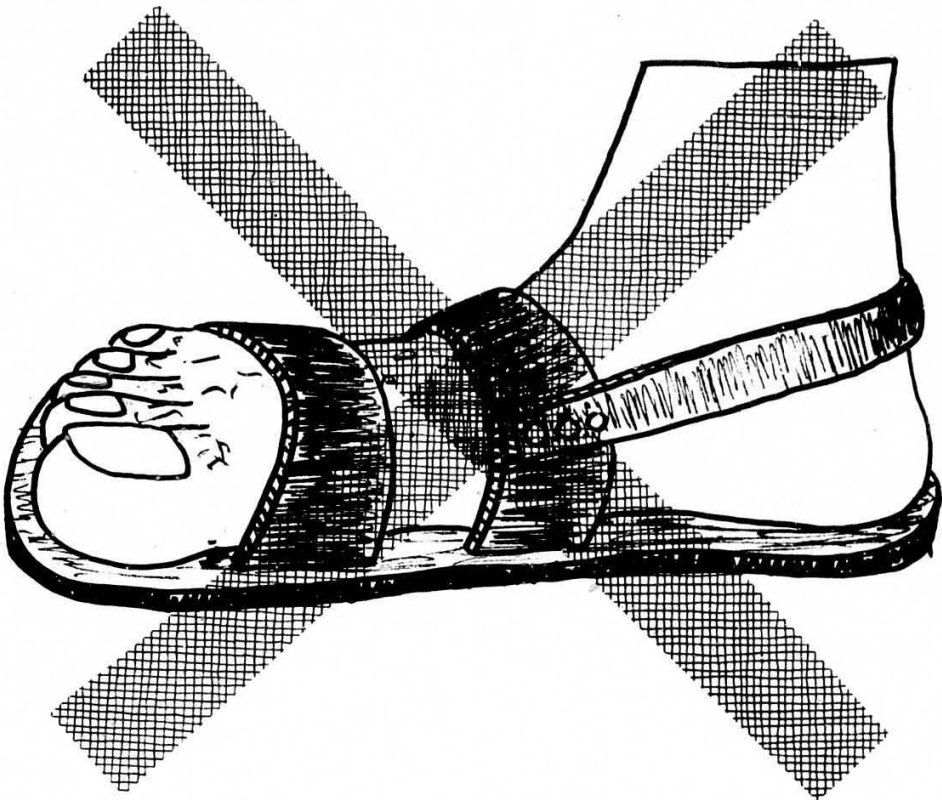
COMPLETE INCLUDING CHECK RIDE



BE FULLY QUALIFIED! Don't miss out on a good paying job for lack of a rating!

PHONE 437-3846

SANDAL SCANDAL



"no toes" goes hunt

The AVION is a weekly publication for Embry Riddle students financed by the student's activity fee through the Student Government Association.

Articles may be submitted to the AVION for publication by the Administration, the faculty and student body. The AVION deadline is every Monday. Please mark all items AVION and deposit in the basket in the trailer, the Suggestion Boxes, or ERAU Box 1568.

The opinions expressed in this paper are not necessarily those of the University or all members of the Student Body, nor do letters appearing in the AVION necessarily reflect the opinion of this newspaper.

Editor.....Dave McCall
Co-Editor.....John Collins
Business Mgr. Dixie Francis
Lay Out.....Mike Saunders
Ed Monoski
Photography...John Collins
George Mittelsdorf
Sports.....Dave McCall
Typists....Ann Marie Pires
Nancy Coates
Circulation....Tony Colgan
George Francis

Reporters and Contributors
Ralph Wicklund, Mike Levin
Cam McQuaid, Terry Miner,
Mike Wise, Gary Anderson,
Mike Winters, Steve Atha,
Bob Duden.

Advisor.....Roger Campbell