

THE AVION

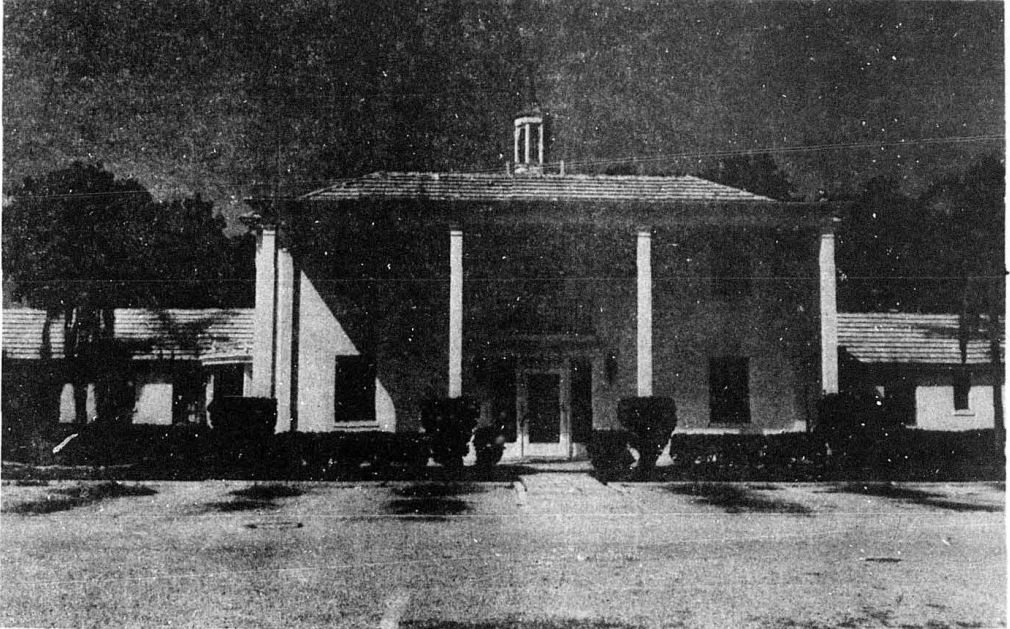
Sponsored by the Embry-Riddle Aeronautical University
Student Government Association

VOLUME V

SEPTEMBER 18, 1970

NUMBER 1

NEW HOUSE FOR SIGMA CHI DELTA



After much consternation, aggravation, and in general, many frustrations, Sigma Chi Delta has come up with what we think is the perfect Fraternity House.

Formally known as Dorm 3, our new gathering hall features such conveniences as individual rooms for the brothers, a spacious kitchen, (if you can cook) and last, but not least, (probably the most) a won-

derful, cool, relaxing, inviting swimming pool.

It's amazing what many man hours, much paint, and some wierd wall paper can do for an otherwise dreary place to live. The brothers were given the decision as to what color they would paint their rooms and out of this meeting of the minds came tasteful rooms which are a pleasure to entertain in, and which actually enhance study (if you can picture that!)

Sigma Chi Delta was founded last fall and since then has made enormous strides to prove itself to an asset to the school and community. We feel that we have something that we can be proud of in our new fraternity house, and would welcome visits from members of the student body who are interested in seeing how we are coming along.



SEE RELATED STORY PAGE 10

SGA SOCIAL CALENDAR

SEPT. 26	BBQ
OCT. 30	BLOOD DRIVE
OCT. 31	HALLOWEEN MASQUERADE BALL
NOV. 21	BBQ
DEC. 5	SENIOR PARTY
DEC. 12	XMAS DANCE

TABLE OF CONTENTS

SPEAKING OUT.....	2
GREEKS.....	3
VETS.....	4
DIVING EAGLES.....	4
ERVAWA.....	5
FLIGHT QUIZ.....	5
SPORTS.....	6
SAFETY TIPS.....	7
BUS SCHEDULE.....	8
ACADEMIC NOTE.....	9
WHATS UP.....	10

speaking out

The AVION reserves the right to edit letters as we see fit in accordance with good journalistic practice. All letters must be signed, although names will be withheld upon request from the writer.



the president's corner

It is nice to see so many old, familiar faces back again and the new faces (especially the female ones) are most welcome. It's good to have you all here for the fall tri. The SGA will do all it can to help make your stay enjoyable.

I would like to remind everyone that to keep informed about what is going on around campus, read the Avion. It contains information about parking, social events, bus schedules etc... It will help you keep out of trouble and let you know where the good times are.

The schedule for SGA social events is in this issue of the Avion. Save it so you'll know when they are. Future Avions and signs around campus will tell you where they are.

Terry Miner

Terry Miner
President
Student Government
Association

ATTENTION! ALL GRADUATING STUDENTS!

Applications for graduation are to be completed and returned to the Registrar's Office no later than EIGHT weeks prior to the expected date of graduation. These applications require verification before the names can be submitted for diploma printing. It is imperative that this policy is followed without exception. Any student submitting an application for graduation after the deadline indicated above will have the processing of his graduation deferred until the following trimester. This means that the date which appears on his diploma will correspond to the graduation date of the following term.

In the event a student fails to process his application for graduation prior to the deadline, but wishes to have the actual graduation date appear on his diploma instead of the deferred date, he may have this done upon receipt of \$5.00 to cover the additional cost of special handling and printing.

BY ED HEWSON

Last trimester many serious students began grumbling about some of the school's current academic policy. Finally several were motivated to action. A group requested that the SGA appoint a committee to examine some of the more prevalent complaints and offer recommendations. The SGA sanctioned the idea and offered to present the findings to the appropriate persons.

The committee has taken the three most prevalent complaints and offered four recommendations. (1) It is felt that instructors should take appropriate measures to insure academic honesty. Specifically, old tests should not be used over and over again. (2) In some cases, faculty work loads do not conform to standards set by the American Association of University Professors. We should conform. (3) If the school is to maintain an effective "open" door admissions policy, a comprehensive and effective battery of preparatory courses must be utilized. One student not prepared to enter a freshman level course can hinder the whole class. (4) A student or student/faculty committee should be established by the faculty each trimester to insure student involvement in the area of academic standards. The student is the biggest loser if the school falls behind the national level of academic standards.

taken from Mr. Garrett's
GA 408 Flight Safety class

I want to be a Navy pilot when I grow up because it's fun and easy to do.

Pilots don't need much school, they just have to learn numbers so they can read instruments. I guess they should be able to read maps so they can find their way if it's foggy and they can't see or if a wing or motor falls off they should stay calm so they'll know what to do. Pilots have to have good eyes so they can see through clouds and they can't be afraid of lightning or thunder because they are closer to them than we are. The salary pilots make is another thing I like. They make more money than they can spend. This is because most people think airplane flying is dangerous except pilots don't because they know how easy it is. There isn't much I don't like, except girls like pilots and all the stewardesses want to marry them so they always have to chase them away so they won't bother them. I hope I don't get airsick because if I do I couldn't be a pilot and would have to go to work.



ΣΦΔ ΑΗΡ ΔΧ ΣΧΔ

SIGMA CHI DELTA

BY STEPHEN L. AVERY III

The Brothers of Sigma Chi Delta would like to welcome all new and returning students to the ERAU campus. For those who were unable to attend last summer trimester, we can only say Daytona Beach had a lot to offer in the way of parties, bands, etc

This trimester Sigma Chi Delta Brothers are looking forward to the upcoming pledge period.

Wednesday, September 16 the Brothers met close to fifty potential pledges at the first Sigma Chi Delta Smoker. Friday night several guest rushees and fraternity members will meet at the newly acquired Fraternity House located at 520 South Ridgewood Ave Friday night party should be the largest event ever held by Sigma Chi Delta.

Several new officers elected at the past Monday night meeting. They are Ken Bording, Treasurer Buss Allsup, Rush Chairman Steve Foster, Pledge Trainer; Mike Busch, Social Chairman; Tom Reed, House Manager; George Waterman, Corresponding Secretary; Paul Williams, Scholarship Chairman; and Public Relations Paul Eddy. The three remaining officers Terry Owens, President; Don Osmundson, Recording Secretary; and Stephen Avery, Vice President.

The Sigma Chi Delta football team is coming along fine - we think we have an all star team. Several veterans have returned. They are Chris Herr (Bear) weighing 285 lbs, (Crittter) Delafosse 255 lbs, Skip Beard 200lbs, Mike Busch, 210 lbs, Paul Reed 235 lbs, Don Osmundson (Shadow) 200 lbs, Steve Avery, 220, Jim Patterson 185, and our outstanding center (side slip) Doug Phillips weighing 60 lbs with shoes. Sid Barling, our famous end was injured last week during a practice session, cracking two

ribs. The above Fraternity members are some of our lighter members; due to the space available we could not list the other members.

SIGMA PHI DELTA

BY BRUCE ROZETT

Sigma Phi Delta Fraternity would like to take this opportunity to welcome all new and returning students and wish them a good trimester at ERAU.

On Thursday, September 10 Pi Chapter celebrated its 10th anniversary. Looking back, Pi Chapter has done much to benefit Embry Riddle as well as itself. Pi has made a great gain in only the last six months with the purchase of two new chapter houses at 519 and 525 South Ridgewood Avenue. But much work lies ahead to maintain this advancement.

Sunday, September 13 elections were held for new officers. The new officers are Bruce Rozett - Chief Engineer; Steve Ellis - Vice Chief; Duane Overvaag - Secretary; Paul Rehder - Business Manager; and Gary Kreitner and Woody Van Why as House Manager.

On Friday September 19, Sigma Phi Delta will hold its Rush Party. We encourage all second trimester or transfer engineering students to come to the Chapter House at 8 PM to learn more of Sigma Phi Delta, the Professional Engineering Fraternity.

Once again, welcome to Embry Riddle from "The Professionals."

Happiness is... a better multi-engine aircraft something like a Lear Jet or Jet Commander

Happiness is... a lounge at Dorm 2.

DELTA CHI

Delta Chi is back from lunch and is ready to make our first full year on campus one that will be remembered. Last weekend we initiated nine new brothers at the University of Florida Delta Chi Chapter. The Initiates went to Gainesville Friday afternoon and spent the weekend learning about the fraternity before being initiated Sunday afternoon. Everyone agreed that it's GREAT to be a Delta Chi. This weekend the remaining pledges will go to the University of Florida for their initiation and a number of the brothers will go up with them for some pointers on how to rush new members.

The brothers will be traveling the dorms next week talking to people about Delta Chi. If we miss you and you or any of your friends are interested in seeing what Delta Chi can do for you, drop a note in Box 1497 or Box 397 telling us when you'll be in your room and we'll stop by and talk or stop by the House at 927 S. Ridgewood Avenue and someone will show you around.

ALPHA ETA RHO

Twenty six salty little bodies returned to the Rho House Tuesday night after an exhausting day at the beach, for an organizational meeting of the fraternity. Nominations for officers were held and stories of the summer's disasters were related in gory detail.

Plans are in motion to hire a cook for the evening meals and a host ladies showed up Sunday afternoon applying for the job.

Thus far in the trimester things have gone very smoothly except for the brothers returning from

CONTINUED NEXT PAGE

summer reserve and OCS programs. Several have been caught practicing close order drill in the living room after quiet hours.

We wish to welcome all of our transfer brothers from other chapters to join us in what we hope will be a very exciting semester. Meetings are held Monday nights at 7:30 at the Frat House, 424 South Ridgewood. If you have a transportation problem call 252-9503.

The football team is going to have to make up for small size with experience. All of last year's players are returning as seniors or juniors. Coach Eliasoff ran the team through practice last week and finished up with a scrimmage on Thursday. Disaster struck when quarterback Jeff Acker suffered a recurrence of the knee injury that sidelined him last year. Flanker Bob Duden or Halfback Jim Frye will probably replace him.

Defensive captain Gary Anderson will be working with a small line, but offensive end Bob Anderson should provide a very effective pass rush at 6'4".

VETS ASSO.



BY DAVID L. CROAKMAN
PUBLIC RELATIONS, VA

Welcome back from the all too short trimester break and a hardy welcome to all the new Veterans who have now entered ERAU. Hope to see you all around campus. In celebration of this new trimester the Veterans Association and the Wives Auxiliary are sponsoring a Welcoming Party at the American Legion, 105 North Palmetto (1 block east of US #1, corner of Volusia and Palmetto) on Friday, September 18th (that's tonight!) at 7:30 PM. The dress is casual and good ole' draft

beer will be one thin dime - the party is for old veterans, new veterans their wives or dates, faculty and administration. So, hope to see you there.

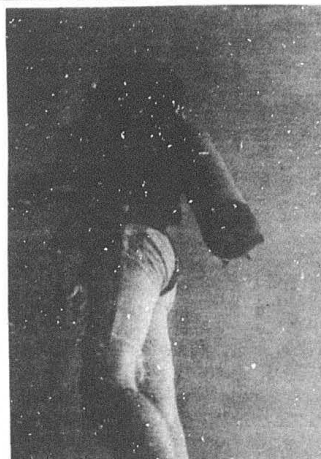
If you haven't already seen or made use of the VA Used Bookstore, please do so. Used books are always in demand at the start of every trimester. We don't buy your books, but sell them for the price YOU want and deduct a mere 10% All types of books are needed, so bring them in and save yourself some money. We are located in the administration building just down the hall from the Cashier's Office I'm sure you all know where that is!

Come one, come all! To the veterans first big blast of the new school year. Plenty of beer and food, with no long chow lines. See y'all there!!!

EMBRY RIDDLE DIVING EAGLES

The Embry-Riddle Diving Eagles is a campus club dedicated to the promotion of SCUBA diving. To this end we hold meetings with all interested persons, do a lot of diving, and offer diving instruction to all who want to try something new.

So far this trimester we have held two meetings, both of which have had excellent turnouts. These weekly meetings, held every Monday night at 8:00pm in room 108, are usually very interesting and informative. Dive schedules are formed with an attempt to



MY GIRDLE IS KILLING ME...

keep the cost as low as possible so that more people can afford more diving. Dives held over the weekend of during the previous week are reported in detail so that the stay-at-homes can get a good idea of what they missed. We also coordinate with another local diving club so we all get the most out of the available diving.

Beginning Tuesday night September 22, 1970, at 8:00pm in room 108, we will be conducting a seven week SCUBA diving certification course. The charge for this course is a very reasonable \$25. With textbook, tanks, and regulators provided. A \$10. deposit is required the first night.

For the certified diver a two-day trip to Bimini is now open for reservations. The cost of the trip is \$40. per person, with a \$10. deposit required. The trip is scheduled for October 17-18. The boat leaves Miami at midnight, Friday. For more information contact Ralph Wickland, ER Box 413, or come to a meeting.

Now that you know a little about us, come by some Monday night and learn more. Maybe you'll try diving-IT'S FUN.

ANSWERS TO FLIGHT QUIZ:

1-C; 2-C; 3-B; 4-C; 5-D.

RATINGS FOR EACH CORRECT QUESTION:

- 1 - Student Pilot-----
- 2 - Private Pilot-----
- 3 - Commercial Pilot-----
- 4 - Instrument Pilot-----
- 5 - Certified Flight Instructor

"WE TRADE TAPES & BOOKS"

BLACKLIGHT POSTERS
AND EQUIPMENT

NEW AND USED TAPES

PARAPHERNALIA

BOOK

9-9 DAILY



TAPEWORM

HOLLY HILL PLAZA

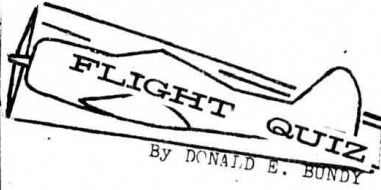
ERVAVA

PEGGY KIDDER, SECRETARY

As we swing into the Fall trimester, the Embry-Riddle Veterans' Wives' Auxiliary has a whole new group of faces leading it. Elections were held on September 8 and as a result the new officers are: Dee Saxton, President; Linda Moore, Vice-President; Peggy Kidder, Secretary; Pat Sicotte, Treasurer; and Jan Shannon, Historian.

Taking up most of the club's time right now is the big project of the membership drive for this fall. The big event is a tea to be held on September 27th. All wives of veterans on campus are invited to be our guests. We plan to conduct a tour of the Riddle campus first hear a guest speaker, and have refreshments. It will be an afternoon of fun and friendship. In addition, Mister Roberts has donated a certificate for a wig to be given away at the tea! Any wives who are interested in attending should contact Linda Moore at 253-0732 or Barbara Gregory at 253-4785 for information, reservations, and transportation. We are hoping for a great turn-out and forms are going to be distributed soon to new and old student wives for whom we have addresses or their

box numbers...so if any of you husbands are reading this, do not throw anything away that you might receive in your mail box without checking to see if it might have been addressed to your wife!!



BY DON BUNDY

1. While at the weather bureau you determine that the air mass over the southeastern part of the United States is warm and has a high relative humidity; the lapse rate is 4° Centigrade per thousand feet and a cold front is pushing in from the Tallahassee area southeast bound. From this information you determine that the weather conditions will be;

- a) stable, stratiform clouds, possibly showers
- b) conditionally stable, cumuloform clouds, moderate rain
- c) unstable, cumuloform clouds, possibly thunderstorms.

2. While operating your aircraft you make a left slipping turn; from this you know the position of the ball and turn needle would be;

- a) turn needle left, ball to the right
 - b) turn needle right, ball to the left
 - c) ball left, turn needle left
 - c) ball right and turn needle right
3. While on a heading of 180°, a turn is made toward the east, the magnetic compass will;
- a) lag and indicates a turn in the opposite direction
 - b) leads and indicates a turn in the same direction
 - c) has no lead or lag when the turn is coordinated and made at 15° degrees of bank
4. As you make an approach ON the glide path of a VASI you should see;
- a) the upwind lights white, downwind lights red
 - b) both upwind and downwind lights white
 - c) upwind lights red, downwind lights white.

5. Which of the following terms describes the flow of air in a low pressure system;

- a) diverging and descending
- b) converging and descending
- c) diverging and ascending
- c) converging and ascending

ANSWERS TO FLIGHT QUIZ, BOTTOM, PAGE 4



Get your

SEAPLANE RATING -NOW-

PROFESSIONAL PILOTS

BE COMPLETELY QUALIFIED. DON'T MISS OUT ON A GOOD JOB FOR LACK OF A RATING.

COST: \$100.00 IN A J-3S OR \$125.00 IN A 150 H.P. SUPER CUP (THE ONE THE BUSH PILOTS USE). THIS IS THE COMPLETE COURSE. PAY MORE -- FOR WHAT. OUR COURSE IS THE ORIGINAL THE OTHERS ARE TRYING TO COPY. IT IS GIVEN BY EX-NAVY INSTRUCTORS WITH 20,000 HOURS PLUS.

Brown Seaplane Corp.

ROUTE 3 BOX 235
WINTER HAVEN, FLA.
33880

Phone (813) 372-2243
Night (813) 682-5230

you will learn

Water Handling
Equipment Checks
Sailing -- Docking
Weight and balance
Glass Water Landings
Emergency Procedures
Rough Water Operation
Normal Patterns - Slips

FOLLOW THESE EASY INSTRUCTIONS TO THE SEAPLANE BASE. MOST OF THE ROAD IS INTERSTATE. ABOUT 100 MILES. TIME ABOUT 1:45. LEAVE DAYTONA ON I-4. TURN OFF I-4 AT THE LAKE ALFRED-WINTER HAVEN EXIT. PROCEED SOUTH TO US 92 (WEST). STAY ON US 92 UNTIL YOU PASS THE WINTER HAVEN AIRPORT, TURN LEFT AT THE SIGN FOR THE SEAPLANE BASE.





sports

College Picks of the Week

Alabama over VPI	Penn State 14 over Navy
Arkansas over Okla. St.	Notre Dame 16 over North-Western
Army 14 over Baylor	Ohio St. 21 over Texas A&M
Villanova over Boston College	Oklahoma 14 over Wisconsin
Texas 21 over California	UCLA 10 over Univ. of Pittsburgh
Duke 14 over Maryland	Purdue 10 over TCU
Fla. 14 over Miss. St.	Tennessee over SMU
Georgia Tech 3 over Fla St.	USC 14 over Nebraska
Miss. over Kentucky	

INTRAMURAL SPORTS

BY DON NICHOLS

A short interview on Friday, September 11, with Mr. Edward Wurzbach, Director of Athletics, revealed a vigorous Intramural Sports program for the fall trimester.

Bowling will begin next week. A meeting was held Thursday, September 17, at 8:30 PM for the purpose of electing officers and establishing a league at ERAU. Details of this meeting will be published in the next issue of the AVION.

Intramural football - all students interested in participating in flag football, please submit team roster to Mike Hoyle

or ER Box 514 no later than September 25. Games will be held on Sunday mornings at the soccer field. Team captains will receive a copy of the rules and a schedule. There will be an organizational meeting on September 30, in Room 110 of the Academic Complex, at 8:30 PM, for team captains only. It is required that all team captains attend this meeting.

Intramural volleyball will not begin until a definite location is secured for use as an athletic building. ERAU is moving from the present athletic building, but no new site has been disclosed at this time.

Rumor has it that there may be a joint fraternity flag-football team to play the fraternities of Stetson. As such, this is only rumor, but I assume the truth will be disclosed in the next issue.

Keep an eye on this section of the paper for race releases, schedules of sporting events for ERAU, and possibly a college and pro-football prediction each week.

Pro Picks of the Week

Cleveland Browns 7 over the N.Y. Jets

Kansas City 6 over Minn.

ERMAC

The Embry Riddle Model Airplane Club is featured as the Club of the Month in the October issue of the model magazine, Model Airplane News. This magazine is given national distribution. Three pictures of the club's activities were printed along with a two column article about the club's activities.

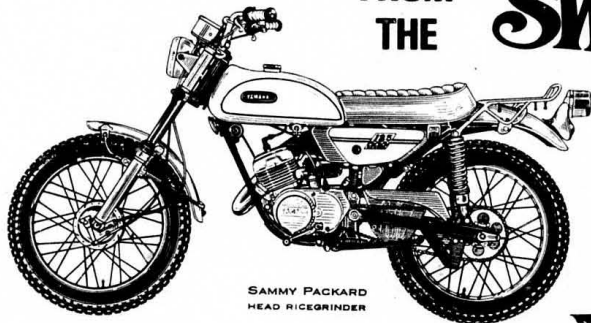
All Embry Riddle students, staff and faculty, both new and old, are invited to participate in the activities of the club. The club will sponsor an area wide contest on Sunday, October 25 on the club's flying site on the parking lot at the new academic complex.

EXCITERS!

FROM
THE

Swinging world
OF

Yamaha 1970



SAMMY PACKARD
HEAD RICEGRINDER

MOTORCYCLE SALES & SERVICE CHEAPER THAN WALKING

YAMAHA OF DAYTONA

1765 SO. RIDGEWOOD AVE.
ROUTE 1
SOUTH DAYTONA, FLORIDA

767-5682

Special consideration to students for storage during breaks



SOCCER SCHEDULE, FALL, 1970

Date	College	Place	Time
September 18	Miami-Dade (South)	A	1600
September 19	Miami-Dade (North)	A	2000
September 26	Rollins	A	1400
October 3	Florida Southern	A	1530
October 10	FSU	H	
October 17	St. Leo	A	1400
October 20	Stetson	H	1530
October 22	Miami-Dade (South)	H	1530
October 24	FIT	H	1530
October 30	Florida Presbyterian	H	
October 31	University of Fla.	A	
November 7	St. Leo	H	1400
November 8	FTU	H	
November 14	FIT	A	1400
November 21	Georgia College	A	1300
November 25	American University	H	
November 28	Thanksgiving Holiday		
December 5	Miami-Dade (North)	H	1400
December 12			

This schedule is the strongest of our career. The "Eagles" are again strong in talent, short on practice time - the coach has to put this team together while in flight ultimately. The first two games will be in Miami- and the team will shuttle down on our own DC-3 - the second part arriving in time for the second half. Miami Dade North handed us a bad score last year - we look to better results. There are about half of the present team members who are returning from last year. 1-2 record holders (including 2nd place in the Uoff invitational tournament). If we can get off and running - and get some practice - this should be the most skilled group put together since the start of inter-collegiate athletics at ERAU.

MODERN DANCE CLASS

BY GARY ANDERSON

Like many students I was interested to hear that Riddle is offering a modern dance class this fall. In order to be the first to sign up I rushed to the Registrar's Office to get the details:

"Who's teaching the course," I asked.

"We have a new instructor this year."

"Yes, who is it?"

"Harvey the dancing bear"

"Harvey the dancing bear?"

"That's right, Harvey the dancing bear."

"Why did you hire a bear to teach modern dance?"

"He works cheap."

"Does he meet the minimum requirements for a college instructor in Florida?"

"Just barely if you'll pardon the pun."

"That's the most terrible thing I've ever heard of.. What was his last job?"

"He worked in the Everglades. On Tuesdays and Thursdays he helped the park rangers search for little lost kids."

"What did he do on Mondays, Wednesdays and Fridays?"

"He helped little kids get lost."

"I see... isn't it going to be a little embarrassing having an instructor that spends his lunch hours hunting for nuts and berries?"

"Are you kidding? With the salaries we pay them, our faculty has been doing it for years."

"What happens if he doesn't pan out as a modern dance teacher?"

"We have an opening in the biology lab."

"Instructor?"

"No... specimen."

SAFETY TIPS FROM SID

BY SID BARLING

While browsing through the grisly details of aircraft accidents, or in other words, who didn't do it (pre-flight) and get caught, my attention was drawn to an interesting set of statistics concerning "faults" in pre-flight planning and/or inspections.

Out of an estimated total of 5,356 general aviation accidents, 206 were blamed to the above. It's easy to see how the "cause" factors break down.

1. Poor preflight -fuel quantity # 73
2. Poor preflight -weather 58
3. Poor preflight -a/c performance 18
4. Poor preflight -at and balance 10
5. Improper servicing 1
6. Misc. inadequate planning 46

Number 1 on the agenda was "poor preflight - fuel quantity" with a grand total of 73. It's amazing how many pilots will kick the tire, light the fire, and never consider how long it is going to burn. When the fuel gauges near the "e", so is flight approaching "e"..for end precise initial planning and constant monitoring are essential to safe flight.

CONTINUED NEXT PAGE

Happiness is. . . . Dean Mansfield with a long hair wig on.

FOR THE FINEST IN FASHION WEAR

...VISIT OUR "IN" SHOP

HATHAWAY & ARROW DRESS SHIRTS

LONG POINT COLLARS

FRENCH & TWO BUTTON CUFFS

FLAIR BOTTOM PANTS

• SOLIDS

• PATTERNS

- SMARTLY STYLED JACKETS -

• LEATHERS • CORDUOYS • WOOLS

• BODY SHIRTS

HART, SCHAFFNER & MARX CLOTHES

Squire's
MEN'S WEAR
1126 North Beach Street
DOWNTOWN

The second grim reaper was "poor preflight - weather" with 58 accidents. Most of the weather cases followed a general pattern: a 36 year old pilot took off on a VFR night flight from Great Bend to Dodge City, Kansas. En Route, he ran into a rapidly moving low complete with high winds, blowing snow, icing, a lowering ceiling and visibility. Hoping to break out in the clear, he bored on through the stuff but luck was logically against him at 0230 he noticed ice beginning to form on the leading edge of the wings, so he decided on a precautionary landing and headed for good old terra firma. When he peered through the darkness and managed to make out the ground coming up, he leveled off. But not soon enough to keep from striking the surface in a relatively flat attitude. The aircraft slid along the ground several hundred feet, the landing gear still neatly tucked into the belly, and came to rest against a slight rise in the terrain. The pilot was unhurt, but a passenger spent some time in a hospital, and the aircraft - an even longer time in the repair shop.

The reported cause in this instance was "continuing visual flight in adverse weather" and "descending below obstructing terrain". A third cause, and one that led directly to the other two, was "inadequate flight preparation" and justifiably so because he had not obtained a weather briefing before taking off. If he had, he'd have been warned of weather which proved to be exactly as the weatherman had forecast.

The cure is obvious, being a thinking pilot, and propilot can spell out the cure in a voice louder than our boldest type, ALWAYS INCLUDE A WEATHER BRIEFING BEFORE EVERY FLIGHT, AND KEEP A CONSTANT CHECK ON WEATHER AS YOU GO.

Possession of a 180 rating doesn't necessarily brand a pilot a chicken... In fact, it provides the non instrument pilot an excellent opportunity to save his hide, not to mention his plane and passengers.

As the often repeated advice in aviation states it, "Learn from the mistakes of others; you don't live long enough to make them all yourself!"

So, ERAU future pilots, while you are learning the art of flying like a pro, remember that preflight planning and inspection are vital first steps in the direction of safe flight.

THINK AND PREPARE SAFELY.



EMBRY-RIDDLE AERONAUTICAL UNIVERSITY

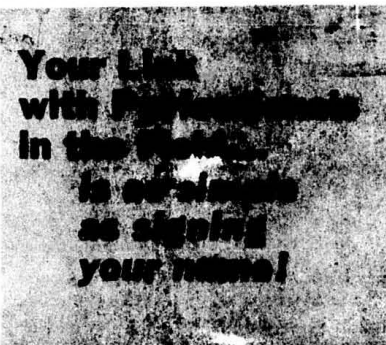
Campus Bus Schedule

Week Days Only

Effective Sept. 16, 1970

OUTBOUND:	Leave Student Center	15 - 45
	Dorm No. 1	20 - 50
	Academic Complex	25 - 55
	Arrive Dorm No. 2	30 - 00
INBOUND:	Leave Dorm No. 2	30 - 00
	Academic Complex	35 - 05
	Dorm No. 1	37 - 07
	Arrive Student Center	45 - 15

Bus to Dining Hall runs only between the hours of 6-9; 11-2; and 5-8:10.
This bus operates every half hour from 6:15 a.m. to 8:15 p.m.



TO: The ERAI Student
Branch of American
Institute of Aero-
nautics and Astro-
nautics

ERAIR BOX AIAA

EMBRY-RIDDLE MAILROOM

PLEASE SEND ME FURTHER
INFO AND AN APPLICATION
BLANK.
NAME-----
ERAIR BOX #-----



**cinch
belt**
\$5.00
1 1/2 wide
brown
black
Solid brass
rings



sandals
hand-made &
custom-made to fit
your own foot.

**We are still
making watch-
hands. Got yours
yet?**

The SANDAL SHEAF, 811 Main St.
HOURS 10:00a.m.-4:00p.m.

ACADEMIC NOTIFICATION

EMBRY RIDDLE AERONAUTICAL UNIVERSITY CALENDAR

FALL TRIMESTER - 1970

October 21 Last day to make up incomplete "I" grades. Last day to officially drop classes.
 October 22-23 Mid trimester registration (Airframe & Powerplant)
 October 23 Mid term grades (4:00 PM)
 October 26 Mid trimester classes begin (Airframe & Powerplant)
 November 2-16 Pre-registration academic advisement
 November 16-19 Pre-registration for spring trimester
 November 26-27 Thanksgiving Holiday. University closed.
 December 14-18 Final examinations
 December 18 End of trimester.

EMBRY-RIDDLE AERONAUTICAL UNIVERSITY
 Dean's List 3.2-3.49
 Summer Trimester 1970

Acker, Kenneth E.
 Acton, Charles H.
 Adams, Lynn Charles
 Andrews, Reginald D.
 Arroyo, Louis Angel
 Baerwolf, James Alvin
 Bonnett, Charlie D.
 Bording, Kenneth W.
 Briggman, James Harry
 Brown, William M.
 Chapman, Horace W., Jr.
 Chirich, Robert
 Collins, Larry H.
 Dickinson, Wayne L.
 Di Mare, Domenic J., Jr.
 Downs, Joseph Allen
 Ducote, Raymond J.
 Feliu, John E.
 Gunn, Bruce Robert
 Hardesty, Robert C.
 Hooper, Richard M.
 Hooper, Wayne Bryan
 Hopkins, John A.
 Jackson, John R.
 Jilisky, Leo R.
 Lapniewski, Francis S.
 Laudien, Eckehard
 Leonard, Michael R.
 Levenson, Allen James
 Lewis, James Edward
 Locklear, George A.
 Long, Dennis Lee

Matlock, Charles Moore
 Medina, Jose R.
 Moen, Lee B.
 Mueller, Donald E.
 Nelson, Jan A.
 Nezzo, Robert
 Ohare, Emmett N.
 Pellor, Patrick D.
 Poisson, Norman A.
 Regan, John
 Rehder, Paul Malcolm
 Riley, Edward F.
 Rivera, Joseph H.
 Robinson, Marvin K.
 Robson, Albert E.
 Rose, Dennis W.
 Rosser, Charles R.
 Salima, Alfredo A.
 Schott, Hohn Frederick
 Sherrod, William D.
 Sicotte, Roland R.
 Spangler, Gary M.
 Stevens, Dana E.
 Stover, John J.
 Teel, James R., Jr.
 Weatherman, Joe H.
 Wierzba, Victor A.
 Wilkes, Harry W., Jr.
 Williams, Paul Harvey
 Winters, Michael A.
 Woodbeck, Carol Edwin

President Hunt requests ALL faculty members, instructors who are not actually in flight at the specific hour, and a staff representative from all administration sections to be in Room 108, Academic Complex, Building A, from 12:15 - 12:45, September 23rd. The officers of the SGA are also invited. This pertains to the self study being initiated this month by ERAU for the purpose of re-accreditation.

Hunt

HERBERT MANSFIELD
 VICE PRESIDENT FOR STUDENT AFFAIRS

TRANSMISSION TROUBLE?



Play
it
Safe!

call

Stan's

transmission shop

AT 253-5770 or 253-3042

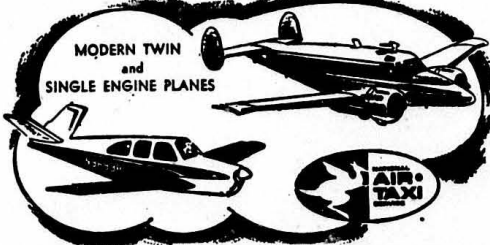
511 Volusia Ave. - Daytona Beach

SERVICED - REPAIRED - REBUILT

ALL WORK GUARANTEED

VOLUSIA
AVIATION SERVICE, INC.
 MUNICIPAL AIRPORT
 VOLUSIA COUNTY'S OLDEST FLYING SERVICE

MODERN TWIN
 and
 SINGLE ENGINE PLANES



AIR
TAXI

Now!

You can Rent

Beechcraft Cessna Piper

Bonanza F35
 A 35
 N35

150
 172
 U206

Cherokee 140
 Apache

SPECIAL CLUB RATES

LOW PRICES

\$25 initiation fee
 \$10 per month dues

NO minimum flight time required for solo

EMBRY-RIDDLE AERONAUTICAL UNIVERSITY
Honor Roll Students 3.5 Above
Summer Trimester 1970

Brown, Norman K.
Bynum, Melton Duane
Carver, William A.
Cifune, William E.
Coots, Harry V., Jr.
Day, Myles E.
Dicarro, Terry Allen
Eller, Barry Arnold
Gillen John Joseph
Gotwald, David E.S., III
Grinberg, Raffael

Hewson, Edward Ernest
Hood, Jerre Michael
Houghtaling, John Bruce
Mills, James T.
Potaczala, Andrew
Ruppert, Norbert
Sedlock, Brian M.
Shelfer, Edward E.
Sherman, Jerry M;
Smith, Francis J.
Woodruff, Phillip S.

WHAT'S UP?

BY ED HEWSON

"Hunt Says ERAU May Move Campus", "No Definite Action On ERAU Land", "To Recommend Rejection of ERAU Land Purchase". I thought that those of you who were absent over the break might be interested in the above headlines as they appeared in the Daytona Beach Morning Journal. Our President was even on television talking about the move. It seems that the county has second thoughts about selling the school the seventy-two acres surrounding the present two structure campus.

The recent news has provided little further coverage of the situation. As usual, we all wonder where we stand now!

* * * *

I think that the new students should be aware of the fact that the student activity fee was recently raised from \$18.00 to \$30.00 per year. Many of us have had trouble finding justification for the increase. Nevertheless, it is now upon us. Students, new and old, must make an effort to see that the fee stabilizes at \$10.00 per trimester for the next few tris.

Other schools pay the equivalent or more, but they get football tickets, a whole week of social gatherings during orientation, periodic top name entertainment, heavily subsidized student clubs, and various other things. Were you new students who exist between the airport, the Holiday Inn, and the dorm, provided with orientation parties or gatherings? If you were, it's a first at Riddle. Don't be apathetic when you get the chance to elect a new

SGA. Put someone in office who will work to make Embry Riddle a real university. If you don't support someone now, don't bitch later!

* * * *

Fields is running a special on compact fold-up camp chairs this week. A small investment on your part will insure a seat in class.

* * * *

Unfortunately Fields does not have textbooks. You'll just have to wait.



...AND THEN THIS RIDDLE STUDENT SAID HE'D TEACH ME NIGHT TAKE OFFS AND LANDINGS.



HE SPIKED MY PUNCH, TOO!

GIRLS' TEA

Friday, September 11, ER's infamous "Dean of women" held a tea welcoming new and returning coeds to the campus. The atmosphere was congenial, and most of the coeds enjoyed the endless introductions to staff and faculty members.



YA, BUT WE HAD A FUN BOWLING TEAM!



"I DON'T CARE IF YOU ARE UNCLE SAM, GET YOUR FINGER OUT OF MY FACE, CAUSE I'M 4F."

ERAU LIBRARY HOURS

8:00 AM - 10:00 PM
MONDAY THROUGH THURSDAY
8:00 AM - 5:00 PM FRIDAY
10:00 AM - 3 PM SATURDAY

Longer hours are in effect because the library is experimenting to find the most desirable times for students needs.

DAYTONA'S LEADING PHOTO SHOPS

IVY LANE

CAMERA SHOPS INC.

919 Volusia Ave.
&

Bellair Plaza

Daytona Beach

DEVELOPMENT OFFICE

Embry Riddle Aeronautical University announced today that Dr. Jack R. Hunt, Dr. Edward P. Yackel and Dr. Daniel D. Sain have been selected to appear in the 1970 edition of OUTSTANDING EDUCATORS OF AMERICA. Nominated earlier this year, they have been chosen for the awards publication on the basis of their civic and professional achievements.

The Outstanding Educators of America is an annual program designed to recognize and honor those men and women who have distinguished themselves by exceptional service, achievements and leadership in education.

Nominations for OUTSTANDING EDUCATORS OF AMERICA are made by the presidents deans, superintendents and other heads of schools and colleges...individuals who have first hand knowledge of their endeavors and accomplishments.

The educators included in this biographical history receive a high honor. They are chosen for national recognition of the basis of local standards of excellence.

Guidelines for selection include an educator's talents in the classroom, contributions to research, administrative abilities, and any civic and professional recognition previously received.



Happiness is...not getting the run round at registration time.

GOLDEN DOOR MOVES AGAIN



ROSY CABRERA

Due to the 50% increase in the female population at ERAU the door that separates the males from the females has been moved down the hall in the Nova Road Dorm.

The girl farthest away from home this trimester is Rosy Cabrera from Colon, Republic of Panama.

Rosy is 19 years old and speaks three languages: Spanish, English, and French. She prefers that they be listed in that order.

After traveling a year in South America, Rosy decided to come to Embry-Riddle after hearing about it from a Panamanian friend who is now attending Riddle. Coming from a Catholic all girls school, Rosy finds ERAU quite a switch. Rosy is enrolled in the Aviation Management program. After receiving her A.S. Degree, Rosy hopes to work as an International stewardess.



FALCON FOR TWO-YANDEM

I would like to thank everyone for their donations of flowers and expressions of sympathy at the death of my father last week. They were of great comfort to my mother brothers, sisters and myself. I am sure dad would have been proud that his son's loss was shared by so many.

Terry Miner
SGA President

Happiness is... some - one with an answer to your question.

Happiness is... less class time and more beach time.



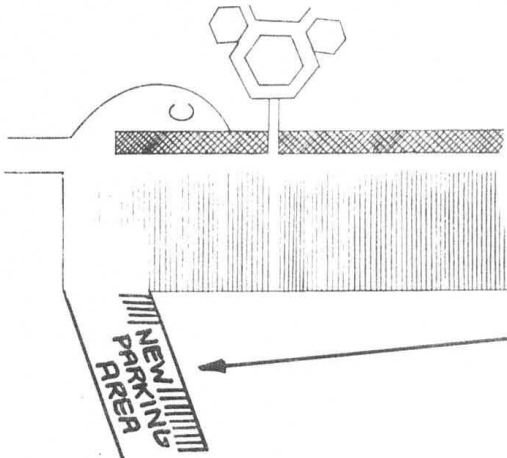
THE AVION'S UNDERWATER PHOTOGRAPHER, SMEDLEY MUFFGLIEB, CAUGHT THIS TRAGIC PHOTO FROM THE BOTTOM OF THE NOVA DORM POOL WHERE HE WAS PREFLIGHTING HIS TIMEX WATCH. THE FLOATING CADAVER WAS LATER IDENTIFIED AS MISS DORIS DUZZ, WHO WOULDN'T.

SEAPLANE RATING

THE BUNNELL AIRPORT IN BUNNELL, FLA.
IS NOW OFFERING A SEAPLANE RATING
1970 CITABRIA on floats

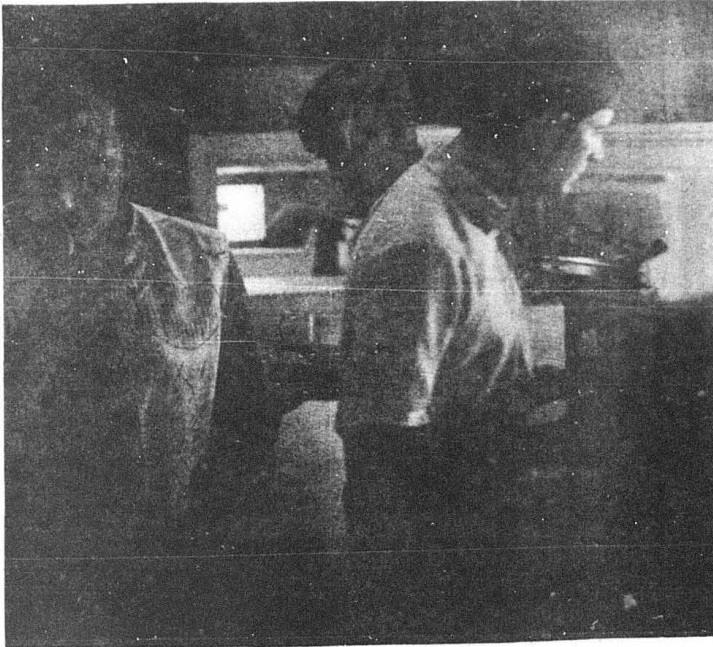
For Further Information Call
904-437-3846

CAMPUS PARKING MAP



THIS NEW PARKING AREA IS BEING OPENED TO ALLEVIATE THE PROBLEM CREATED BY PEOPLE PARKING ON THE ENTRANCE ROAD TO THE NEW CAMPUS. PLEASE USE THIS SPACE.

AVION BLOWOUT



THREE STOOGES CAUGHT IN THE ACT...



MARY SCHWARTZ, ENROLLED COED, MADE THE STARTLING DISCOVERY WHILE SWIMMING IN NOVA ROAD DORM POOL THAT EVERY TIME HER ROOMMATE FLUSHED THE TOILET THE POOL LEVEL RAISED 1 INCH. THE ADMINISTRATION IS CURRENTLY STUDYING POSSIBLE OTHER USES OF THIS PHENOMENON IN THE ACADEMIC COMPLEX.



YOU ARE RIGHT! THESE BEANS HAVE "PUCKER POWER"!

DEAN BUCKS



HI THERE! I AM
DEAN BUCKS. I'M
THE DEAN OF
ADMINISTRATION.
WELCOME TO ALL
YOU NEW AND
RETURNING STUDENTS!
I WOULD LIKE TO
DISPELL A COUPLE
RUMORS BEFORE
WE GO ANY
FURTHER.
WHO EVER
SAID I WAS
TO BE THE
FIRST RECIPIENT
OF A
PERSONALITY
TRANSPLANT, IS
OF COURSE WRONG.
ACTUALLY ANOTHER

DEAN IS TO BE THE FIRST — MYSELF
SECOND. NEXT, I'M TIRED OF
THE COMPLAINTS ABOUT THERE
BEING EXCESSIVE EX-MILITARY PEOPLE
AND RAMPANT NEPOTISM ON CAMPUS.
I'M GOING TO TRANSFER ALL THESE
COMPLAINTS TO MY BROTHER-IN-LAW
JUST AS SOON AS HE IS DISCHARGED
AND HIRED HERE. OK, JUST PAY
THE CASHIER AND DO NOT WEAR
SANDLES — WE WON'T HAVE ANY
PROBLEMS THEN. LIGHT 'EM UP, MEN!

The AVION is a weekly publication for Embry Riddle students financed by the student's activity fee through the Student Government Association.

Articles may be submitted to the AVION for publication by the Administration, the faculty and student body. The AVION deadline is every Monday afternoon at 4:00 p.m. Please mark all items AVION and deposit in the basket in the trailer, the Suggestion Boxes, or ERAU Box 1568.

The opinions expressed in this paper are not necessarily those of the University or all members of the Student Body, nor do letters appearing in the AVION necessarily reflect the opinion of this newspaper.

Editor.....Dave McCall
Co-Editor....Trish Redmond
Business Mgr...Jan Collins
Lay Out.....Dixie Francis
Photography.....Steve Atha
Sports.....Don Nichols
Typists.....Trish Redmond
Ann Marie Pires
Circulation....Tony Colgan
Advisor.....Roger Campbell

Reporters and Contributors
Sid Barling, Ralph Dietz
Bob Currier, Cam McQuaid,
Terry Miner, Paul Vargo,
Mike Saunders, Ed Hewson,
Jeanne Fitzpatrick, Mike
Wise, Gary Anderson, Linda
Colgan, Ralph Wicklund,
George Mittelsdorf.