

Weekly Weather

<b>Tuesday</b>
High <b>53</b>
Low <b>31</b>
Sunny
<b>Wednesday</b>
High <b>58</b>
Low <b>35</b>
Mostly Sunny
<b>Thursday</b>
High <b>61</b>
Low <b>41</b>
Sunny
<b>Friday</b>
High <b>69</b>
Low <b>46</b>
Sunny

Spring semester graduation date change

The Spring semester’s graduation has been moved from Monday, May 9 to Sunday, May 15. Due to the Clinical Virology Symposium which will be taking place at the Ocean Center from May 6-11, the first available date for graduation was May 15. The graduation is now set on the Ocean Center website, but is still subject to change.

End-of Course Evaluations

How were your courses this semester? Did you enjoy your professors? How can your courses be improved to make them better? Now’s your chance to give feedback by completing the short survey available through ERNIE. Provide your comments now through Dec. 10.

Festival of Charols

All instrumentalists that are interested in playing at the Christmas Festival of Carols, please contact Chaplain Rust at [rustm@erau.edu](mailto:rustm@erau.edu). The Christmas Festival of Carols will be held Thursday at 7:30 p.m. in the Interfaith Chapel.

“Cram with Cookies” at the Hunt Library

Join the library on Study Day, Dec. 10 for “Cram with Cookies.” Study at the Library starting at 7 p.m. and enjoy snacks and baked goodies provided by the Hunt Library staff.

Immunization Clinic shots

Health Services is giving the opportunity for students to receive their missing immunization shots. The shots will be given on Tuesday, Dec. 7, from 2 to 6 p.m.  
MMR \$65.00  
Hepatitis B \$85.00  
Meningitis \$125.00  
Students with the school health insurance plan will be reimbursed later for their immunization.

ERAU teams up with United Way to give back to community

Priyanka Kumar  
Copy Editor

Embry-Riddle is taking part in giving to the community this season in partnership with United Way. The thermometer located at

the side entrance off Richard Petty, and the main entrance off Clyde Morris is a representation of the campaign’s goal to raise \$35,000 or more. According to Lori Grant, Director of Resource Development, United Way is a resource development venue for the community.

“As my boss says, ‘we connect dots,’” Grant said. This is not United Way’s first visit to campus. According to Grant, the non-profit organization has developed relationships with the school in the past and has been successful. “We’ve formed wonderful rela-

tionships with Dr. Johnson and Dr. Bailey so we thought it would be a good idea to come again,” Grant said.

The campaign’s goal is to raise as much money as possible, so that the money can be distributed by volunteers to United Way’s 38 partnership agencies such as The Red Cross and the Children’s Home Society. First, money is raised then allocated to agencies with the help of volunteers.

According to Dawn Fontaine, Administrative Specialist in the Department of Applied Aviation Sciences, clubs in school can benefit from the campaign if they are in need of fulfilling volunteer time. “A lot of the clubs have to do so many community service hours, I was trying to promote it yesterday, that if a club needed service hours they could talk to reps and help out,” Fontaine said.

Students, staff, and faculty have the option to donate money through cash donations, a one-time donation or a payroll deduction that will help the organization.

Fontaine shared a few words about why she feels people should contribute, “The agen-

cy has been around a long time since 1941, they are well-respected, they help those in need. This is what corporations do, it’s a good thing to do and have employers involved with giving, now it’s the time to share,” she stated.

Similarly, Grant feels that it is a challenging time to give but that it is necessary. “The need is so great it’s just challenging times where we need to raise as much as we can for people who can’t do it themselves,” Grant said. She also noted that

United Way does not want to compete at this time, but inspire.

At the moment, United Way has raised approximately a million dollars up to date, and Embry-Riddle has raised about \$16,000, with the deadline shortly approaching on Dec. 10.

The campaign for United Way is supported by Dr. John Johnson and the Embry-Riddle administration. This year’s campaign team is Dr. Nancee Bailey, Associate Vice President for Student Affairs; Dawn Fontaine, and Sarah Ochs, Director of Professional Programs, College of Aviation.. Contact Student Affairs at 226-4943 for more information.



REPRESENTATIVES FROM THE UNITED Way of Volusia-Flagler Counties were on the Flight Deck last Tuesday. Lori Grant, second from left, Director of Resource Development, and Mindy Stephenson, a third-year medical student from FSU, greet students Rajeh Alaklabi, Nishant Chaudhary, and Aaron Ellis. The United Way campaign continues through Friday.

Agents engage students in act

Hannah Langhorn  
Staff Reporter

On Friday night, the Touch-N-Go Productions team hosted yet another successful show: “Friday Night Laughs”, with the first ever improv group to come to Embry-Riddle: Mission Improvable.

The group that performs dramas that are completely unrehearsed and performed with the participation of the audience was a hit that night.

Beginning at the University of Massachusetts, Mission Improvable began traveling around the country in the late 90’s sharing their love for improv with anyone and all. The switch up for Touch-N-Go to feature an improv group instead

of the normal comedy acts was refreshing and fun, a true experience for all who attended.

Although the night’s performance was given by Mission Improvable, the audience became a part of the show with helping come up with words and phrases and of course rooting on the group to keep their spirits up and the laughter continuous.

Each show has been significantly unique with different styling of comedy and the way the comedians express themselves, and though Mission Improvable broke the barriers of improv groups on campus.

For more information on future events offered on campus, you can visit [www.touch-n-go.org](http://www.touch-n-go.org) or stop by the Touch-N-Go office and ask a member.



MISSION IMPROVABLE BROUGHT A look to the “Friday Night Laughs” stage. The improv group, originally from the University of Massachusetts, performed a completely unrehearsed show while incorporating the ERAU audience.

Christmas Angel Tree

Ainsley Robson  
Campus Editor

Every year for the past five years, the Volunteer Network has been teaming up with the Salvation Army to support the Angel Tree Program. This national program was developed to provide assistance for disadvantaged children and senior citizens during the holiday season. Companies such as JC Penny’s and local community, such as Embry-Riddle join together to help others during this holiday season. According to Zhanna Hrachova, from the Volunteer Network, the program works like Secret Santa, where members students, faculty and staff can pick one of the 35 children who were signed up for the program and get them something that they really want or need to make the holidays special. When an individual receives the child to help they are provided with the age, sex, child’s name and what they want most for Christmas. Once the gift is purchased the donor will return the gift, unwrapped, and angel tag to the Volunteer Network, who in turns passes the gift on to the local Salvation Army. From here all gifts are delivered to the deserving families so that the parents can wrap the items special for under the Christmas Tree. Currently the Volunteer Network has only a few select children left in their goal to help 35 children this holiday season. For those who wish to receive an angel child can visit the Volunteer Network in the Student Center room 112 or see a representative on the flight deck everyday till the end of the semester from 11 a.m. to 2 p.m. They would like to remind all participants that all gifts for the children are due to the Volunteer Network by 3 p.m. on Friday, Dec. 10. Hrachova concluded with “It is a great thing to do, to help a less fortunate family to make

Christmas happen for their child. As the Volunteer Network, we love doing this every fall to be a part of something bigger and so rewarding in a number of ways.”

Campus . . . . .	A2
Student Government . . . . .	A3
Student Life . . . . .	A4
Opinions . . . . .	A6
In Memory of . . . . .	A7
Sports . . . . .	B1
Entertainment . . . . .	C1
Classifieds . . . . .	C3
Comics . . . . .	C4

ERAU reaches 100,000 Alumni

Eagles end season with loss to Loma



Cher and Aguilera team up for ‘Burlesque’

Campus A2

Sports B2

Ent. Inside C2



## Pi Kappa Alpha evacuation training



ANTOINE DAUGNY/AVION

**THE BROTHERS OF PI Kappa Alpha** take lessons on weather emergency procedures for Embry-Riddle, in order to have individuals on campus that are trained to help the university with any evacuation events due to weather conditions.

# Embry-Riddle Alumni numbers reach 100,000

Ainsley Robson  
Campus Editor

Each semester comes to an end with the senior class graduation. Through the three different campuses here at Embry-Riddle, the number of alumni the university has gets closer to the 100,000 milestone.

The 100,000 alumni milestone will be reached with the graduation that will occur during May 2011.

In celebration of this milestone, the university is revealing a new logo that will mark this particular milestone.

Also in conjunction with the 100,000 alumni milestone, the Embry-Riddle Alumni Association will start raising funds next year for a student scholarship.

According to Michele Berg, Executive Director of Alumni Relations, the Atlanta and New York City alumni chapters each established endowments and recently combined their funds to offer more money to students. Berg spoke of this, "prompted by this, the Alumni Association felt they could assist even more students by including the efforts of all chapters and extending it further to the entire

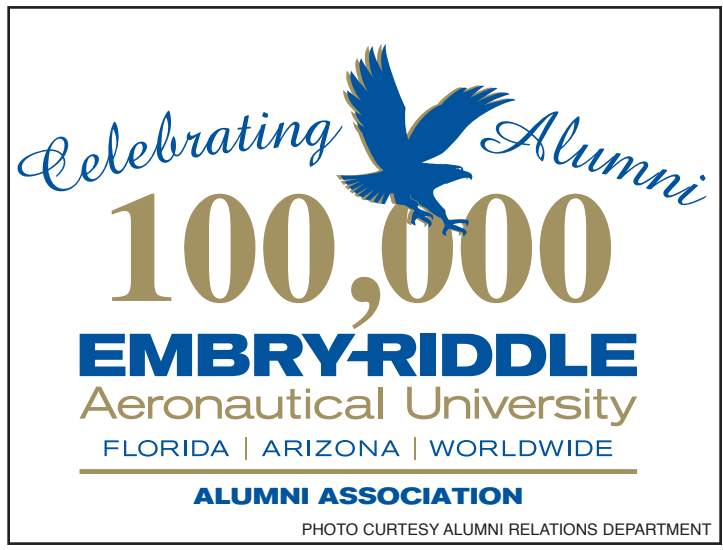
alumni base."

Members of the Embry-Riddle community will be able to see this new logo not only associated with the new scholarship that is being developed, but also with different publications such as graduation programs next year, the new alumni directory that will be released shortly and other alumni publications.

At this time the individual who will become alumni 100,000 is undetermined, due to the changing of graduating seniors at all three Embry-Riddle campuses.

Berg closed with, "The Alumni Association is very excited about reaching such an important milestone and thought helping students would be the best way to celebrate this [100,000 alumni milestone] and to further grow Embry-Riddle's alumni community."

For more information about this milestone and the scholarship, one can contact the Alumni Association on campus located behind the Library or on the web at [www.eraualumni.org](http://www.eraualumni.org).



# The real Mars rover

Peter Tan  
Staff Reporter

Some readers might remember the episode during season two of "The Big Bang Theory" where Howard Wolowitz crashed the Mars Rover into a ditch and discovered the presence of water. While that was pure fiction, the Mars Science Laboratory, also known as Curiosity, is a NASA rover out to make that a reality and discover whether Mars ever was or is an environment that can support microbial life.

Scheduled to be launched in November 2011 with an estimated landing date sometime in August 2012, the MSL rover will be over five times as heavy as the previous rovers, carrying ten times more weight of scientific instruments as well.

Costing approximately US\$2.3 billion, and with an endurance of at least 686 Earth days, the 750 kilograms (1,700 pounds) rover will be delivered via an Atlas V 541 rocket to explore Mars with greater range than ever before in human history.

Roughly the size of a Mini-Cooper, the MSL has independent drive motors for each of its six wheels that can overcome obstacles up to 75 centimeter (30 inch) high. The four wheels on the ends also have individual steering motors that allow the

rover to make 360-degree spins on the spot.

A nuclear battery gives the rover its incredible endurance, allowing it to use its ten scientific instruments to examine the rocks, soil and atmosphere. A laser will vaporize patches of rock from a distance, and another instrument will search for organic compounds.

Other instruments include mast-mounted cameras to study targets from a distance, arm-mounted instruments to study targets they touch, and deck-mounted analytical instruments to determine the composition of rock and soil samples acquired with a powdering drill and a scoop.

One of the biggest challenges is landing the heavy rover onto the Martian surface safely and with precision. To achieve this, NASA has employed a brand new entry system, abandoning the parachute and airbags system the previous rovers have used.

The first stage is a guided entry where the MSL is protected by an aeroshell which serves the triple purpose of being a heat shield, slowing the velocity of the entire payload and also guiding the rover to its intended landing area. Various control systems such as having the center of mass off axial, thus providing lift, have been derived from the Apollo missions to reduce landing preci-

sion error.

Once the payload has slowed to Mach 2, a large supersonic parachute will deploy after the aeroshell has achieved stability by ejecting ballast to bring the center of mass back to the center of the payload. The 16 meter (51 feet) parachute is over 50 meter (165 feet) long and can generate up to 289 kilo Newtons (65,000 pounds) of drag force in the Martian atmosphere.

Nearing the surface, the aeroshell is jettisoned and a platform holding the rover uses rocket thrusters to slow down, similar in concept to the Apollo Lunar Lander. While this is happening, the platform unfolds a sky crane that will lower the rover to a "soft landing" onto the surface of Mars.

This sky crane system is brand new and consists of three bristles that cradle and lower the rover. After the MSL has ascertained touchdown, explosive cable cutters free it from the bridle, with the platform and sky crane flying away to a crash landing.

With the rover not due for landing until August 2012 and with a lifespan of almost two years, it would be quite a while more before NASA yields any substantial results. When that happens however, NASA can expect the whole world to be watching to see if the possibility of a Martian colony exists.

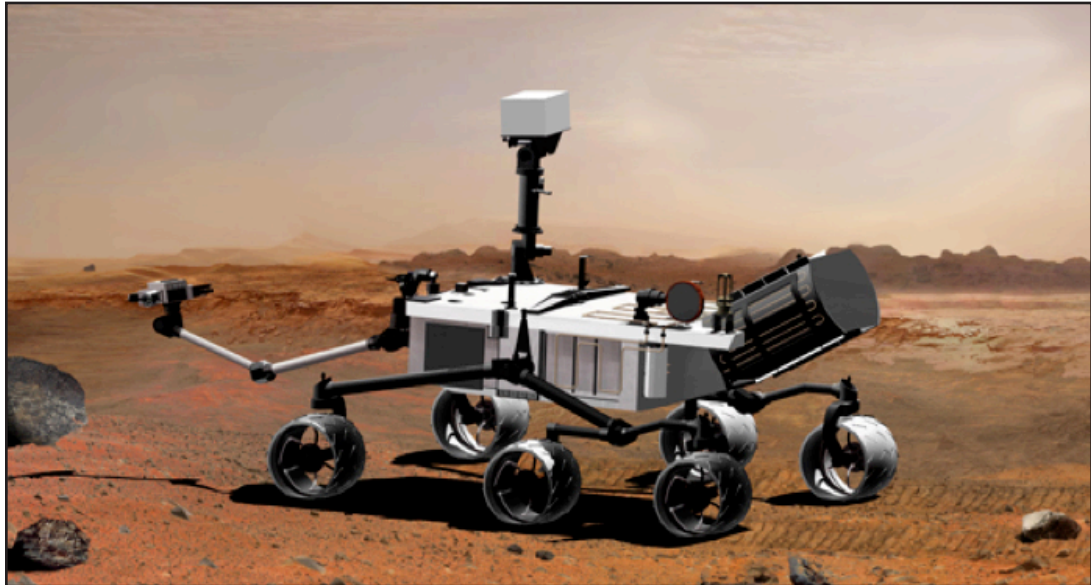


PHOTO CURTESY NASA

**COMPUTERIZED DEPICTION OF THE** Mars rover, Curiosity, which is scheduled to be launched in November 2011 and land on the Martian surface in August 2012. The rover will be looking for evidence that would allow scientist the ability to evaluate life sustainability.

## Touch-N-Go brings Coffee House act



ALENA THOMPSON/AVION

**MONDAY, NOV. 29, TOUCH-N-GO** Productions brought in Mike Sullivan, from the Sirius Radio station Coffee House, who played his music for the audience in the Student Center during lunch hours.

## Army day on campus



ANTOINE DAUGNY/AVION

**AS PART OF ARMY** National Guard recruitment efforts on campus, the National Guard brought their rock wall for students to climb while receiving information about service in the National Guard.



### Executive Board

Editor-in-Chief ..... Tim Kramer  
Managing Editor ..... Aaron Craig  
News Editor ..... Costas Sivyllis  
Business Manager ..... Matt Stevens  
Photography Editor ..... Austin Coffey  
Advertising Manager ..... Alena Thompson

### Editorial Staff

Front Editor ..... Tim Kramer  
Campus Editor ..... Ainsley Robson  
SGA Editor ..... James Scott  
Student Life Editor ..... Alena Thompson  
Opinions Editor ..... Peter Tan  
In Memory Of ..... Matt Stevens  
Sports Editor ..... Aaron Craig  
Comics Editor ..... Austin Coffey  
Comics Editor ..... Tilford Mansfield

### Editorial Staff Cont.

Entertainment Editor..... Nick Candrella  
Copy Editor..... Priyanka Kumar

### Staff Advisor

Aaron Clevenger, Director of Student Activities and Campus Events

### Contact Information

Main Phone..... (386) 226-6049  
Advertising Manager..... (386) 226-7697  
Fax Number..... (386) 226-6727  
E-mail..... [theavion@gmail.com](mailto:theavion@gmail.com)  
Website..... [avionnewspaper.com](http://avionnewspaper.com)

*The Avion* is produced weekly during the fall and spring term, and bi-weekly during summer terms. *The Avion* is produced by a volunteer student staff. Student editors make all content, business and editorial decisions. The editorial opinions expressed in *The Avion* are solely the opinion of the undersigned writer(s), and not those of Embry-Riddle Aeronautical University, the Student Government Association, the staff of *The Avion*, or the student body. Letters appearing in *The Avion* are those of the writer, identified at the end of the letter. Opinions expressed in the "Student Government" and "Student Life" sections are those of the identified writer. Letters may be submitted to *The Avion* for publication, provided they are not lewd, obscene or libelous. Letter writers must confine themselves to less than 800 words. Letters may be edited for brevity and formatted to newspaper guidelines. All letters must be signed. Names may be withheld at the discretion of the Editor-in-Chief. *The Avion* is an open forum for student expression. *The Avion* is a division of the Student Government Association. *The Avion* is a member of the Associated Collegiate Press. The costs of this publication are paid by the Student Government Association and through advertising fees. *The Avion* distributes one free copy per person. Additional copies are \$0.75. Theft of newspapers is a crime, and is subject to prosecution and Embry-Riddle judicial action. This newspaper and its contents are protected by United States copyright law. No portion of this publication may be reproduced, in print or electronically, without the expressed written consent of *The Avion*. Correspondence may be addressed to: *The Avion* Newspaper, Embry-Riddle Aeronautical University, 600 S. Clyde Morris Blvd., Daytona Beach, Florida 32114. Physical office: John Paul Riddle Student Center, Room 110. Phone: (386) 226-6049. Fax: (386) 226-6727. E-mail: [theavion@gmail.com](mailto:theavion@gmail.com).





# November ‘Scholar of the Month’ winners

Amy Luckette  
COAS Representative

This November there were six Student Government Association scholars of the month, there was one winner representing the College of Arts and Sciences, three representing the College of Engineering, and two representing the College of Aviation.

All nominees were chosen by faculty members and recognized for their hard work. The student winners show commitment to the university’s mission and the Student Government Association is proud to support and admire them for upholding the high standards of our university.

The College of Arts and Sciences winner was Farrah Hassan. She was nominated by Stephen P. Luxion, Col USAF AFROTC. Farrah is both honorable and responsible in her actions and has also proven to be a well respected student on campus. She has taken an active role in leading the Air Force ROTC volunteer program and exceeded the Cadet Wing goal of 1000 volunteer hours nearly six weeks ahead of schedule! This was never been done before the Cadet Wing was under the leadership and

guidance of Farrah Hassan. She is also easily performing within the top 15% of her classes. She is objectively leading by example and subjectively out performing nearly all of her peers. Farrah’s outstanding achievement records include a high CGPA in the very difficult Aerospace Engineering Program. She has also recently completed the AFROTC Physical Fitness Assessment and scored an excellent 97/100! Farrah demonstrates a high level of motivation and always accepts leadership opportunities, turns them into personal challenges, and exceeds everyone’s expectations. Her positive attitude and work ethic is the reason she is the most influential people in the detachment; she is able to influence subordinates and superiors, well ahead of her peers. She also was recognized last month as the Cadet of the month but he Cadet Wing for her outstanding dedication and leadership. She was also nominated for Cadet Training Assistant, an award only given to top performers at Field Training. She is the best of the best and the Student Government Association is proud to have Farrah as a member of Embry-Riddle’s student body.

The first College of Aviation

Scholar of the Month winner is Margaret David. She was nominated by Sid McGuirk from Applied Aviation Sciences and Air Traffic Management. Maggie us an Honors student who maintains a perfect 4.0 cumulative grade point average! She has worked on several Honors Projects and has been found to be extremely focused and well organized. The second College of Aviation Scholar of the Month winner is Hilary Myers. She was nominated by Stephen P. Luxion, Col, USAF AFROTC. Hilary is majoring in Homeland Security and her area of concentration is Terrorism Studies. She is taking 16 credit hours while maintaining a high CGPA. She is also the team leader in a semester-long project for Industrial Security.

As team lead she fully secured a 6-story software company building, interior, exterior, and technology. Hilary is part of the Air Force Reserve Officer Training Corps (AFROTC) and as a Cadet she led the flight as well as arranged flight activities. She has also spent time recruiting for the AFROTC and was the Warrior of the Week and Cadet of the Month for AFROTC. In addition, Hilary attended an AFROTC Professional Development Training session in July 2010 in

Ramstein AB, Germany. Hilary was also inducted into the National Society of Collegiate Scholars in October of 2010. She also is a member of the Orientation Team and helps welcome new students to the university. Hilary is part of the Rite of Christian Initiation of Adults (RCIA) and is in the process of converting to Catholicism. Lastly, she has volunteered in the Heart Walk. Hilary Myers has a positive attitude and the internal drive which makes her stand out both in the classroom and around campus.

The first College of Engineering Scholar of the Month winner is Gursharan Singh. He was nominated by Dr. Ilteris Demirkiran. Gursharan’s current grade point average is 3.86 and has proven himself to be a very hardworking individual. According to Dr. Ilteris, he was the best in his EE-335 class. Gursharan was always prepared for exams and quizzes and completed exceptional work in a timely manner for any assignment given to him. He is a very mature individual and has a positive attitude. He has been chosen as a lab Teaching Assistant for four semesters and gets good reviews from students. Gursharan openly explains difficult topics to many classes to help his fellow class-

mates understand topics. The second Scholar of the Month winner is Yosvany Alonso. He was nominated by Keith Garfield. Alonso consistently demonstrates superior scholarly attributes. In addition to leading the class cumulative points earned, Alonso consistently participates in class discussions and exercises. He is a model student in terms of attitude, behavior, and performance. The last November Scholar of the Month winner is Lenny Phillips and he was nominated by Maj Mirmirani. Lenny is a graduate student assistant for the College of Engineering. Besides being reliable, knowledgeable, trustworthy, friendly, helpful, and always filled with suggestions, Lenny assists Dr. Gurjar in the Civil Lab and is performing thesis research with Dr. Fady Barsoum in conjunction with the FDOT and the University of North Florida on simulations of a bridges behavior under stress. Lenny received a Student Court Scholarship and an American Society of Civil Engineering Scholarship for involvement in the ASCE and his academic achievement. He participated in regional conferences and community achievements such as Adopt-a-Road. Lenny was invited and became a member of the National Society of Collegiate

Scholars and has been on the Honor Roll and Dean’s List every year since 2005. As a member of NSCS, he was nominated to attend the International Scholar Laureate Program delegation on engineering in China. While in China, he explored Chinese engineering projects and experimented in labs at various Chinese universities. In 2009, he received the ERAU Civil Engineering Student of the Year Award. He was a member of the Senior Class Council and was appointed as part of Who’s Who Among Students in American Universities and Colleges. According to his nominator, Lenny has been a blessing to the COE. He supports and embodies the college at all our event. He is also one of the greatest speakers to students and parents at the COE Open House and Campus Tour event. He teaches professors parts of computer programs that they never knew existed! Congratulations Lenny for making the lives of the COE faculty much easier.

The Student Government would like to thank all those who participated in the new Scholar of the Month Program this semester. We are looking forward to continuing the program next semester and in the future.

# Library’s ‘Reserve a Copy’ Winter shuttle

Ashok Annamalai  
COA Representative

The library reserve copy project is a joint endeavor between the Hunt Memorial Library and the Embry-Riddle Student Government Association. The objective of this project is to provide those books that are highly requested, but unavailable, to the library reserve copy shelf. Since its inception in early summer 2010, the library staff members have kept a running tally of the number of requests for each unavail-

able book. This has allowed the identification of the most seriously needed books. In the months since its creation, has provided multiple textbooks for student use.

Many of these books have been provided though generous donations from professors, who were contacted by the library staff. Those books which professors were not able to provide, due to lack of funding or availability, the SGA has provided. The four books are: “Heat Transfer” 10th Edition by J.P. Holman, “Fundamentals of Computer

Graphics” 3rd Edition by Peter Shirley, “Strategies for Technical Communication” 2010 Edition by Laura J. Gurak and “Using Financial Accounting Information” 7th Edition by Porter/ Norton. These four books were selected because of their high rate of demand and limited availability, as determined by the library technicians. The SGA is planning on continuing this program to help the students of Embry- Riddle. So, If you are in the library and one of the books for your class is not on the reserve copy shelf, request

that your professor places it on the reserve copy shelf, or talk to one of the library technicians about the different ways that in which your book can be provided. The SGA would like to acknowledge the hard work of the library technicians, and thank them for their contribution to the success of the students.

If you have any suggestions for the “Reserve a Copy” project, please feel free to stop by the SGA office any time during the week. Our office is open Monday through Friday 8 a.m. to 5 p.m.

Tess Doeffering  
COE Representative

It is now time to sign up for the annual Winter Break shuttle to Orlando. This shuttle will run from the Embry Riddle campus to Orlando International Airport.

There is also an opportunity to get a shuttle back to Embry Riddle’s campus from the Orlando airport after the winter break. The fare is 20 dollars one way or 40 dollars round trip. If you would like to get a ride on the shuttle, stop by the

Student Government Office to sign up! The last day to sign up will be Dec. 10. The following are the dates and times for the shuttle:

**Dec. 13 – 9 a.m. and 2 p.m.**  
**Dec. 14 – 5 a.m., 9 a.m., and 2 p.m.**  
**Dec. 15 – 5 p.m.**  
For return rides:  
**Jan. 10 – 1 p.m. and 5 p.m.**  
**Jan. 11 – 1 p.m., 5 p.m., and 11 p.m.**

If there are any questions, please contact the chair of the Safe Ride Committee Logan Melchionna at [melchiol@my.erau.edu](mailto:melchiol@my.erau.edu).

If you rented your textbook...

## Books due back by Dec. 15th

(Last day of Finals!)

Customers whose textbooks are not returned to the bookstore by that date will be charged the costs as stated on their rental receipt.

Students who miss the rental check-in deadline will be able to participate in the textbook buyback program.

## Test Run for COB 123

### EXTENDED LAB HOURS

Days/Dates	COB
Thursday 2-Dec	8 a.m.-12 a.m.
Friday 12/3	8 a.m.-10 p.m.
Saturday 4-Dec	10 a.m.-10 p.m.
Sunday 5-Dec	10 a.m.-10 p.m.

- This test run is to make cob- 24Hrs Lab instead of C-lab.
- Helps us by using Cob 123 for these dates & Let your friends know too.

Concerns Contact: [singh202@my.erau.edu](mailto:singh202@my.erau.edu)

# Winter Break Shuttle

\$20 One Way    \$40 Round Trip

Campus

⇒

Orlando

Monday Dec. 13th

@ 9AM & 2PM

Tuesday Dec. 14th

@ 5AM & 9A M & 2PM

Wednesday Dec. 15th

@ 5PM

Orlando

⇒

Campus

Monday Jan. 10th

@1PM, 5PM

Tuesday Jan. 11th

@1 PM, 5PM, 11PM

Sign up at the SGA Office.

Contact Logan Melchionna : [melchiol@my.erau.edu](mailto:melchiol@my.erau.edu)



# Doing an Event over Winter Break?

[theavion@gmail.com](mailto:theavion@gmail.com)

**Christian Fellowship Club**  
@ ERAU



## Counseling Center

Soar to new heights

386-226-6035  
Monday – Friday  
8 A.M. – 5 P.M.

Tips to  
S.O.A.R.

SUCCEED

OPTIMIZE

ACHIEVE

REVITALIZE

EMBRY-RIDDLE  
Aeronautical University  
DAYTONA BEACH, FLORIDA

### This Week's Topic

#### Groggy? What Happens if You Don't Get Enough Sleep?

- A sleep debt accumulates....The price you pay may be falling asleep unexpectedly at the worst possible times, such as on the road, in the books, or while chilling with someone special.
- Concentration, memory and information processing are diminished. Duh, what was that again?
- Reaction times are reduced. Wonder why nobody wants to ride with you? Think Sheikra or Rock n' Roller Coaster!
- When you are sleep-deprived, mood and behavior may be negatively affected. No one likes an ogre (except Shrek, perhaps).
- The immune system can be impaired by lack of sleep. Consider this if you find yourself sneezing, sniffing, achy or simply not feeling your best.

#### How to Get Enough (Sleep, that is....)

Make it a priority...Remind yourself to give your body what helps and avoid what doesn't. Establish an evening ritual to wind down. Dim the lights, engage in quiet activities, and let yourself drift. Focus on your breath. Strive for a regular sleep-wake schedule. Then wait for your reward.

[www.embryriddle.edu/dlb/counseling](http://www.embryriddle.edu/dlb/counseling)

## Need a Break from Studying?

Join us for a

### Christmas Festival of Carols

A time to sing your favorite Christmas carols,  
hear readings from the Christmas Story,  
and eat Christmas Cookies!

Thursday, December 9<sup>th</sup>

7:30pm

Interfaith Chapel

Sponsored by the Interfaith Chapel

For more information, contact Chaplain Rust at [rustm@erau.edu](mailto:rustm@erau.edu) or 386-226-6007

## Congratulations

from the Flight Department to the following students for receiving their:

### Private Pilot Certificate

Hugh Gardner Lazenberry Jr. 11/10/10

### Instrument Rating Certificate

Nicholas Mark Frederico 11/23/10  
Eric Andrew Boyd 11/23/10

### Commercial Pilot Certificate

Daniel Philipp Dietz 11/23/10

### Commercial Multiengine Add-on Rating

Michael John Brunetti Jr. 11/26/10  
Stephen Michael Colby 11/24/10

### Flight Instructor Instrument Certificate

James Alexander Zimmerman 11/30/10

## ENERGY SKATEBOARD SHOP



**BUY ANY DECK & GET BONES WHEELS! FOR JUST \$15!**  
ANY SIZE 51MM - 60MM. BLACK OR WHITE  
ALL PRO DECKS \$35-\$50 W/ FREE GRIP!  
(OLD SCHOOL/CRUISERS \$60. LONGBOARDS \$80)  
Offers valid until 12/24/2010. LIMITED TO IN-STOCK ITEMS ONLY. Prices do not include sales tax.

**PRE-XMAS SHOE CLEARANCE!**  
DVS, LAKAI, VANS, ES, ETNIES,  
ELEMENT, IPATH & MORE!  
**\$35 OR LESS!**  
150+ PAIRS IN-STOCK!  
CHECK WEBSITE FOR REMAINING INVENTORY.

**403 E. INT'L SPEEDWAY BLVD, DAYTONA BEACH**  
**WWW.ESKATEBOARDSHOP.COM - (888) 737-7709**

## Touch-N-Go Productions Presents

Stress Relief Day  
Flight Deck  
Thursday, Dec. 9  
10:00 - 2:00

[www.touch-n-go.org](http://www.touch-n-go.org)



Angel Tree

**connects**

parents &  
children

Together  
through the  
gift of  
prayer and love.

Donate a gift to be delivered

**to children in the**

*name of their parent.*



## You can help an angel!

**Angel Tree  
Project.**

Stop by the Volunteer Network  
(UC #112) to sponsor a special  
child for the Christmas season.



# Trance night delivers hours of entertainment

On Saturday, December 4, DJs from Embry-Riddle, together with the management of Bishop Tavern held a highly successful trance music night titled “Euphoria”. Many people came out to enjoy the music and dance away the stress before the last push for finals.

The DJs that performed during the night included DJ Nogo (Jeff Luong), DJ Fretz (Jonathan Howery), DJ Zero (Ian Gebbie), DJ Flux (Cris Stephens), DJ Beatmaddik (Frank Castillo), DJ New Dynasty (Sean Kelley), DJ Alex G (Alejandro Gutierrez) and DJ K-Rice (Kendrick Rice). Together, they had a total of eight sets that went from 8 p.m. all the way to 3 a.m.

The crowd was highly energetic throughout the night with various people gracing the dance floor and showing off their skills. Glowsticking, shuffling, tecktonik, popping, and even breakdancing made

appearances as the crowd cheered the dancers on.

The general sentiment of the crowd was an appreciation of having the trance night being a welcome change from the hip-hop and R&B music that most clubs in Daytona Beach play. DJ K-Rice said “It’s good that we were able to pull this off on our own, to try to introduce trance music to more people and I’m glad the crowd loves it.”

Trance music is a genre of electronic dance music that is still very young compared to other genres of music and is still somewhat misunderstood by the majority of the populace. Unfortunately, trance has at times had the negative connotation of rave parties associated with it, along with alcohol and drug abuse.

Saying trance music is associated with drug abuse is the same as saying that hip-hop

or gangsta rap promotes violence and gang culture. The reality is that trance music today has become a staple in many big city clubs, who have strict policies against drugs.

In Europe, trance has become a huge movement, with world famous names like Armin van Buuren, DJ Tiesto, ATB and Above & Beyond gracing stages not just in Europe but throughout the world.

Overall, the group of DJs from Embry-Riddle are out to prove that you can have a night of good clean fun with trance music and that it is just another genre of music that people listen to, so please stay tuned for their next event.

~Peter Tan



## STUDENT FORUM

“What is your favorite Holiday?”

- Compiled by Alan Larsen



**Louis Zell**  
Sophomore  
Aeronautical  
Science  
“Christmas”



**Brandon Gill**  
Sophomore  
Aeronautical  
Science  
“Christmas”



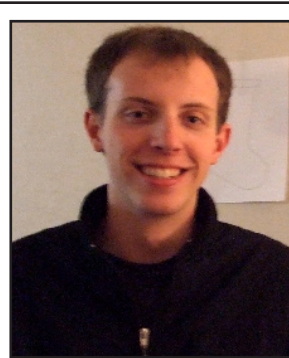
**Jonathan Rauch**  
Sophomore  
Business  
Administration  
“Chanukkah”



**Jonathan Heckman**  
Sophomore  
Business  
Administration  
“Leif Erickson Day”



**Mark Becker**  
Sophomore  
Aeronautical  
Science  
“4th of July”



**Bryan Weisenburger**  
Sophomore  
Aeronautical  
Science  
“Hanukkah”

## BLESSING FOR THE GRADUATES

By Rev. Melynn Rust, ERAU Chaplain

May you be blessed with courage for your journey,  
That fear may never keep you from exploring new paths.

May you be blessed with hope,  
That you may never give up on yourself or others.

May you be blessed with goodness,  
That in you strangers may find a generous friend.

May you be blessed with laughter,  
That you may never take yourself too seriously.

May you be blessed with curiosity,  
That you may always desire to seek out the mystery of faith.

May you be blessed with gratitude,  
That you may see all of life as a gift.

May you be blessed with remembrance of one another and your time together here;  
For there is forever a thread woven through your spirit  
connecting you with others from this place.

May you be blessed in knowing that you are loved,  
And that we who love you are full of joy  
As we celebrate your life in our midst  
And your dreams to come.



# In Memory of Ben Glattstein

## January 29th 1982 - November 25th 2010

Ben tragically lost his life ferrying a single engine airplane from California to Hawaii on Thanksgiving day. Ben was loved in the ERAU community as a friend, co-worker and mentor. You will be truly missed Ben. RIP Aussie!



What we say today is only an inadequate expression of what we carry in our hearts. Words pale in the shadow of grief; they seem insufficient when describing someone that was so loved and admired. Ben's values were strong; they are timeless; and they will endure! Today we all mourn with Nathan, Hanna, Dan, Ruth, and all Ben's extended family, knowing that their loss is personal and profound, and valuing their willingness to share this farewell with us all! Ciao mate, Grant.

What can I say Ben, you were a good friend to me. You remain an inspiration to so many. You will be with each of us in our thoughts and actions as long as we live. Your personality, zest for life and adventure, warm and kind spirit has changed the world in a sense nobody can begin to grasp. You may have been taken from us, but you live in our thoughts and souls forever my friend. Go with God Ben Glattstein. We are all so fortunate to have had you in our lives. Justin Root.

G'day Ben, My dear friend and fellow Aussie Riddle roommate. In life you concurred our hearts and life its self. I'm sure you're already doing the same where ever you are now. I will endeavor to live life to the fullest as you did. Thanks for the best times at Uni and training together, I'll never forget your selflessness, help and friendship. May your spirit last forever. My thoughts are with you and your family always. Cheers mate. Adam Orchard (ERAU Class of 2004)

Ben, You were a great friend and an inspiration to all, an adventurous life such as yours is uncommon in this world and you will be sorely missed. Love, Will and Irene

Ben was my first flight instructor at ERAU. He was extremely motivated and passionate about aviation and that made me want to fly more and be a better pilot. He did just that. He got me excited about aviation and all that it has to offer. Ben was an inspiration to me and he still is. Ben was always on an adventure running around living life to the fullest. I was always jealous of him and I still am. Ben was also my friend. He was always looking after his friends and putting them first. Ben will never be forgotten and is always in my heart. God is taking care of him up in the sky where he always wants to be. God Bless Benji! I love you and miss you! Your memories will live forever. Lindsay Sorg

I take Ben's Aussie Attitude on life everyday with me from now on. No challenge is too small and this world has endless 'endeavors' to encounter. I only wish that I could have learned more from him and heard more of his wild stories that only seem like Tall Tales to some. Not for Ben. He is an example for me everyday of a true aviator. Derek Osborn

R.I.P Ben. You will never be missed and continue to look over our new adventures! Matt Bouchenet

"For once you have tasted flight you will walk the earth with your eyes turned skywards, for there you have been and there you will long to return" - Aviation lost a great one today RIP Ben Glattstein you will be missed but wherever you are , you will take good care of us. Luis Carmona.

Ben was one of the most amazing people that I have ever known. He lived his life to the fullest and his adventurous lifestyle paves a way for others to live by. He was liked by everyone and anyone who knew him and I believe the world was a better place with him in it. Ben will be missed by many. Greg Bruyn.

Ben, thanks for helping me find my religion. Ryan.

Mr. Dover (aka, Butterball). You've always brought a smile to my face. Your stories were wonderful and the way you told them made me feel like I was there with you. I'll never forget our recruiting trip to Miami...you kept me laughing the entire time. You will be truly missed. Until we meet again...Cheers Mate! Chuck.

I had the pleasure of making Bens acquaintance over the summer after a late flight in the Pitts. It was too late to get gas at New Smyrna, but Ben wanted to fly, so he offered to fly to another field and pick up my refueling tab to be repaid at my leisure. Very kind after a first introduction. Recently I got to spend a week with him at the National Aerobatic Championships in Texas. Ben always wore a smile and was very supportive of me at my first contest; he and the rest of the team seemed genuinely interested in helping me achieve. I was privileged to be party to stories from the past, getting to know Ben and the team, and to be present for the writing of a new story. I was gratified to be on the team, and the idea that I would continue to develop friendships with Ben and the others made me happy. Now Ben has departed on his final flight, and I am left in disbelief. Though I never thought about it before, I think new friendships are exciting, and to halt that process just after it's begun is extremely unfortunate. And the how and why... it's bewildering. I really wanted to know Ben better and was looking forward to seeing him around the hanger and at school, and maybe joining in on a few adventures. I barely knew him and I feel like a part of my future has been torn away... I can't begin to imagine how his family and close friends must feel, but I hope they know many others share their pain and will help carry the burden of continuing. I admire Ben a lot. He was only 2 years older than me but had so much more experience in the air, and had a job I would love to have flying airplanes I would love to fly, going places I'd love to go. I knew that I was going to learn so much from him. I never worried at all that this could happen. I don't know what to say except I'm sad you're gone, Ben, and you were a friend. I think people are like a tapestry and we're all little threads; when you pull one out, the rest of the threads tend to tighten and bunch up around it. While the metaphor is nice, the tapestry never looks the same again. We're a bunch of little threads, Ben, bunched up around the tear you left behind. Robby Coats.

Ben, your smile and good spirit was contagious. Your life's story is envied by many, including myself. You have set the bar high, brother. We will spend a lifetime looking up to you; I'm sure you will be looking out for us. Blue skies, mate. I feel lucky to have had met you. Jeison.

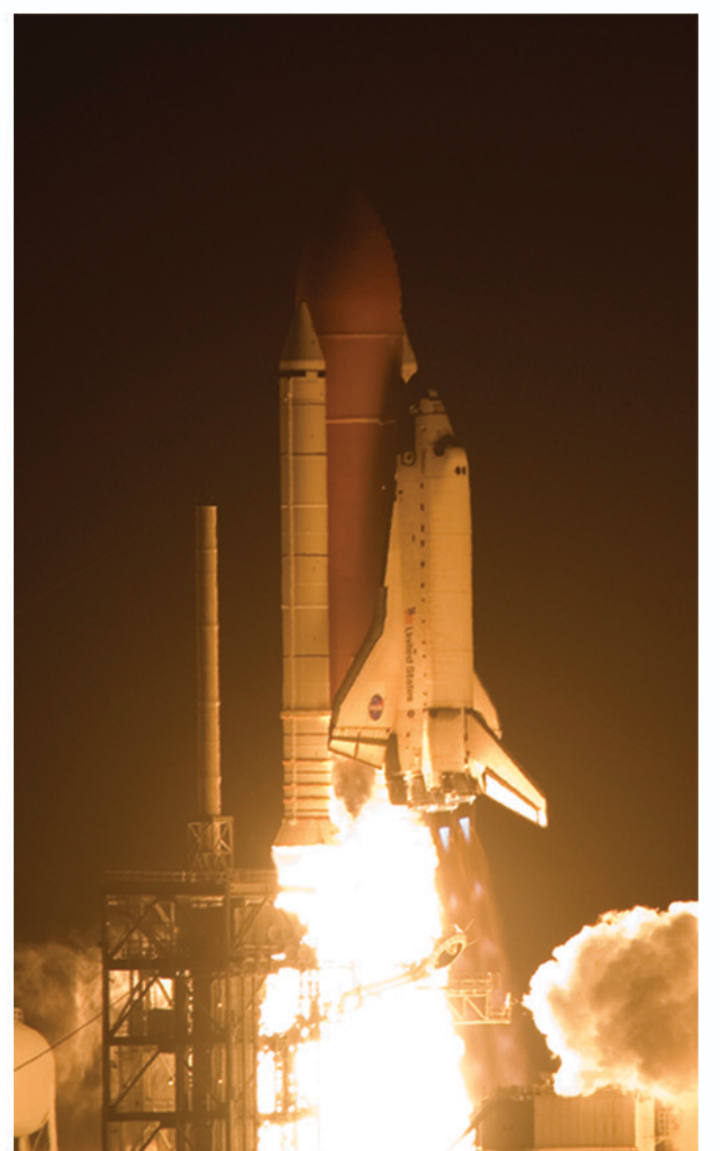
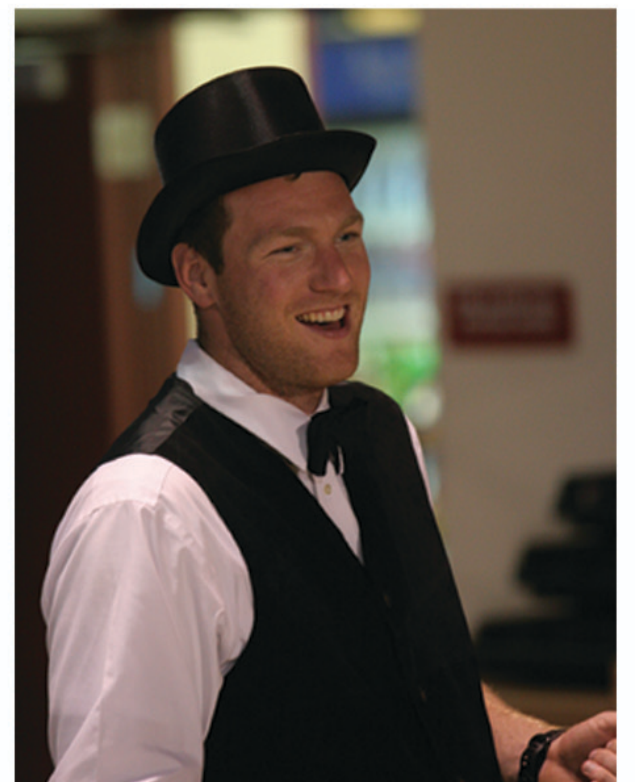
Though many of us have an amazing vision for our life, most of us don't live it. We have places to go, people to meet, incredible experiences to be had, if only we could find the time...but why don't most of us ever live that vision? Because the technicalities of life get in the way. Ben never let life get in the way of any of his fantastic visions. He lived every minute of it to the absolute fullest, he grabbed life by the horns and said, "I'm gonna have the best ride possible", and he did. Ben was a teacher, a leader, an inspiration. He was a brother, son, and uncle, a best friend. He was a breath of fresh air. Benny was a free spirit, who didn't believe in the confines or orders of this world, he didn't believe in restrictions or limitations, or impossibility. He had an endless thirst for knowledge, and always sought to better himself. His youthful energy and jubilation for life are a model for us all. Ben, you raised us to new heights, you set the bar, you challenged us to face every day with kindness, humor, excitement, humility, and an appreciation for life. If anyone could look back at their time spent on earth and with a deep sigh, say, "I gave it my all", it's you, my friend. Now, you've been granted permission to leave this earth, and fly an adventure we could only dream of. Blue skies and tailwinds, my dear, dear, Ben, you are deeply missed. Adrienne Krunich (Johnson).



# the AVION newspaper



Interested in using your  
journalistic skills as a  
member of  
*The Avion* staff? Come  
join us at our  
meeting, every Tuesday  
@ 7 pm in  
The Endeavour  
Conference Room.







# SPORTS

Seven Eagles named  
in the NAIA pre-  
season poll  
B2

Eagles finish the  
volleyball season in  
Sioux City, Iowa  
B2

Basketball wins  
their first confer-  
ence game  
B3



# Seven Eagles ranked in national preseason poll

## Five Eagles ranked in National poll

Alison Smalling  
ERAU Athletics

The Embry-Riddle men's tennis team has five players ranked among the nation's top 25 according to the NAIA Preseason poll released by the Intercollegiate Tennis Association on Friday. The Eagles feature five singles players and two doubles pairs in the rankings.

After capturing his first USTA/ITA Florida Regional title, junior Charlie Rice has achieved the highest ranking of his Embry-Riddle career of No. 6. Rice advanced to the USTA/ITA National Small College Championships in Mobile, Ala. where he finished sixth overall. Rice finished second in the

Eagle line-up in wins in 2009-10 with 22 and is currently 9-5 on the year.

Senior Jan Hoekzema closed out his junior campaign as an NAIA and ITA first team All-American. He was ranked seventh in the final singles ranking and will begin spring competition in the same spot according to this year's preseason poll. Hoekzema was a perfect 3-0 in conference play to earn first team All-Conference honors and finished with an even 11-11 singles record and a 24-10 mark in doubles.

Newcomer Simon Felix has already made his presence felt in the line-up as he teamed up with Rice to claim the 2010 USTA/ITA Florida Regional title. Felix is ranked 13th after posting a 9-2 record in the fall that included advancing to the regional title match in singles where he took Rice to three sets.

Junior Peter Francis jumped two spots to No. 15 after finishing at No. 17 in the final singles ranking of 2009-10. He

split his playing time between the second and third singles positions last season and finished with a 19-12 record. A 2009-10 All-American, Francis partnered with Istvan Bolgar in doubles play. The duo won the ITA/Florida regional title and finished third at the ITA Small College National Championships en route to up a 25-6 record.

After seeing limited playing time in 2009-10, sophomore David Spennare came into his own in the fall, posting an 8-3 singles record. He is ranked 23rd in the preseason poll.

Rice and Felix are in at No. 4 in the doubles rankings. They teamed up to take the USTA/ITA Florida Regional crown and finished fourth at the USTA/ITA National Small College Championship before closing out the fall at 8-4.

Hoekzema and Francis went 3-1 in their four contests in the fall and will start the spring ranked sixth nationally.

The Eagles play their first match of the season on the road

## Chen, Strom top ITA/NAIA poll

Yi Ching Chen and Josefine Strom have achieved the highest rankings of any women's tennis player in Embry-Riddle according to the 2010-11 NAIA National Preseason Poll released by the Intercollegiate Tennis Association on Friday.

Fresh off their NAIA national doubles title, Chen and Strom are rated as the No. 1 doubles team in the nation, which is a program first. After posting a 3-1 record at the ERAU Open, the Eagle tandem swept through the bracket at the USTA/ITA Florida Regional to secure the regional crown and a spot in the USTA/ITA National Small College Championships.

Seeded third in the eight-

team field, Chen and Strom downed Lindsey Wilson's Trina Slapeka and Slavic Millanovic and followed with a straight-set victory against Oklahoma Baptist's Paola Costa and Lillian Ferreira to earn a spot in the title match. The Eagles' opponent was the fourth-seeded pair of Kirstin Strimble and Ashley Litchfield from Point Loma Nazarene, who toppled the top-seeded Auburn Montgomery team in the semis. The Eagles withstood a fierce rally from Strimble and Litchfield in the first set before pulling away 7-5 and took the second set 6-3 to claim the national title.

Chen has also achieved the highest singles ranking of any woman who has played tennis for the Blue and Gold. Chen topped teammate Roccio Frej to win the USTA/ITA Regional singles title. The junior won her first two matches at the USTA/ITA National Small College Championships before closing out the fall season at 9-2 with a loss to Point Loma Nazarene's

Kristin Strimble in the tournament final. Last season, Chen set an ERAU record for wins in a single season, finishing at 27-6 overall.

Frej is also ranked among the nation's best, coming in at No. 10. The junior transfer closed out her first fall with the Eagles with a 6-3 singles record and teamed up with Landyn Scudder for a 4-2 mark in doubles play. Frej and Scudder are ranked 18th in the doubles poll.

Strom rounds out the list of ERAU women in the preseason rankings, checking in at No. 41. A second-team All-American in 2009-10, Strom finished just behind Chen in wins in 2009-10 with a 25-7 overall ledger. She is 5-2 on the year in singles and is 10-2 with Chen in doubles.



The Embry-Riddle women's tennis team opens its 2011 schedule on the road on Feb. 5 when the team travels across the state to take on the University of Tampa. The match is scheduled to start at 3 p.m.



AUSTIN COFFEY/AVION

PICTURED ABOVE FROM LEFT to right are Charlie Rice, David Spennare, Yi Ching Chen, Peter Francis, Josefine Strom, Jan Hoekzema, and Simon Felix.

# Eagle season ends with loss to Point Loma



**POINT LOMA** 3

**EMBRY-RIDDLE** 1

Michael Pierce

**ERAU Athletics**

Despite having three hitters record double-digit kills, the 11th-seeded Embry-Riddle women's volleyball team had their season cut short with a 3-1 defeat (20-25, 25-20, 19-25, 21-25) at the hands of sixth-seeded Point Loma Nazarene on Friday afternoon in the first round of single-elimination playoffs at the NAIA National Championship. The Eagles finish the season with a 33-4 record, while PLNU improves to 22-12 and will face No. 3 seed Fresno Pacific in the quarterfinals Friday night.

ERAU continued the recent trend of falling behind early in the first set, as the Sea Lions won the first four points of the match. A service error broke the string, and the Blue and Gold stormed back to tie the set at 4-4 and then take their first lead at 7-6 on a block from Jordan Holcomb and Emily Jacobson. Point Loma

came back to tie it at 10, and would regain the lead at 12-11 on an attack error. The lead bounced back and forth for the next few minutes, with neither side extending the margin to more than a single point. That was until a 4-0 run gave the Sea Lions a 19-16 edge, only to see the Eagles rattle off three consecutive points to tie it again at 19. With the set tied at 20, PLNU took the final five points of the set, including two service aces from Nicole Eiler, to win the set, 25-20.

After trading points for the first eight points of the second set, Embry-Riddle strung together four straight to take an 8-4 lead. The Blue and Gold maintained a multiple-point advantage until a quick 3-0 burst from the Sea Lions cut the deficit to just a point (16-15). The Eagles wouldn't surish the season with a 33-4 record, while PLNU improves to 22-12 and will face No. 3 seed Fresno Pacific in the quarterfinals Friday night.

ERAU continued the recent trend of falling behind early in the first set, as the Sea Lions won the first four points of the match. A service error broke the string, and the Blue and Gold stormed back to tie the set at 4-4 and then take their first lead at 7-6 on a block from Jordan Holcomb and Emily Jacobson. Point Loma

for the Eagles, they couldn't come any closer, dropping the set by a score of 25-19.

The fourth set saw ERAU

win the first two points only to drop 11 of the next 15 points to fall behind 11-6. The Blue and Gold rallied back for a

4-0 spurt that closed the gap to just one (11-10), and were able to maintain contact with the Sea Lions for the next 15



ANTHONY SEKINE/AVION

TAYLOR MARTIN LED THE Eagles with 14 kills in Friday's loss. The Eagles finish the 2010 season with a 33-4 record and a perfect 12-0 mark in the Sun Conference Play.



points. A 3-0 run gave Point Loma a bit of breathing room at 21-17, and the closest the Eagles would get from then on was two points (22-20), as the Sea Lions went on to take the set, 25-21, and the match, 3-1.

Taylor Martin led the Eagles with 14 kills and two blocks, while Kemp chipped in with 10 kills and four blocks. Abby Hall added 12 kills and nine digs, while Julia Frassetto contributed nine digs. Nina Kontrec anchored the defense with 23 digs, and Adriana Vazquez racked up a match-high 40 assists.

Tabitha Henken recorded a match-high 20 kills along with 12 digs for the Sea Lions. Maddie Dahms added 13 kills and Nicole Eiler tallied 21 digs.

The Eagles finish the 2010 season with a 33-4 record and a perfect 12-0 mark in Sun Conference Play. The Blue and Gold captured their third consecutive Sun Conference regular season championship, as well as The Sun Conference tournament championship. Embry-Riddle made their first-ever appearance in the NAIA National Championship, picking up a win over Union (Ky.) in the Opening Round and wins over Southern Oregon and Briar Cliff (Iowa) in pool play at the National Championship final site.

# Eagles volleyball team falls to the Lady Flames



**LEE UNIVERSITY** 3

**EMBRY-RIDDLE** 1

Michael Pierce

**ERAU Athletics**

The 12th-ranked Embry-Riddle women's volleyball team lost for just the third time on Thursday night, and for the second time their defeat came at the hands of No. 1 Lee (Tenn.). The Lady Flames

swept the Eagles back on Oct. 15 at the SCAD Invitational, and on Thursday night Lee defeated ERAU in four sets (18-25, 20-25, 25-23, 20-25) to win Pool A at the NAIA National Championship. Despite the loss, the Blue and Gold earned the No. 2 position in Pool A, advancing to tomorrow's single-elimination playoff bracket as the No. 11 seed and a first-round match against sixth-seeded Point Loma Nazarene at 12:30 p.m. CST.

Just as they did in their previous two pool play matches, the Eagles found themselves falling behind quickly in the first set, forcing head coach Joslynn

Gallop to take a timeout with her team trailing 7-2. After the break, Embry-Riddle got on a bit of a roll, closing the gap to 8-7 on a Nina Kontrec service ace. But the Lady Flames answered back to regain a five-point lead at 17-12, prompting Gallop to take her second timeout of the set. This time the Eagles weren't able to close the gap, and Lee would go on to take the first set, 25-18.

The Blue and Gold turned the tables on LU in the second set, jumping out to a 7-3 lead on a kill from Jordan Holcomb. But a 5-1 Lee run quickly erased the deficit, knotting things up at 8-8. A few minutes later, the Lady Flames rattled off four

straight points to take a 15-13 lead, their first lead of the set. After an Embry-Riddle timeout, the Eagles put together a short run, regaining the lead at 17-16 on a block from Holcomb and Emily Jacobson. But the lead would be short-lived, as Lee closed out the set on a 9-3 run to take the second set, 25-20, and gain a 2-0 lead in the match.

With their backs against the wall, ERAU came out in the third set with an increased sense of urgency, opening up a 6-2 lead in the early going. The Eagles maintained that lead until a 5-1 LU run tied the set at 12. The two teams then alternated side-outs to 15, when Lee broke the trend by winning two points on

their own serve, taking a 17-15 lead and prompting an Embry-Riddle timeout. The Eagles turned things around coming out of the timeout, using a 6-1 run keyed by two kills from Abby Hall to take a 21-18 lead and force Lee to take a timeout. The Lady Flames battled back to tie things at 21 and even take a lead at 23-22. But a Holcomb kill quickly tied the set at 23, and a Holcomb-Jacobson block gave ERAU their first set point of the night. On the next point, Rachael Cunningham's attack sailed wide, giving the point and the set to the Eagles, 25-23, sending the match to a fourth set.

Embry-Riddle continued to

build on the momentum of the third set win, jumping out to a 10-5 lead in the fourth. But the Eagles just couldn't quite pull away from Lee, and the Lady Flames would draw even at 13-all. From that point, a pair of Hall kills sparked a 4-0 ERAU run, giving the Eagles a comfortable 17-13 lead. After a Lee timeout, the Lady Flames quickly rallied, winning six of the next seven points to take a 19-18 lead, causing Embry-Riddle to take a timeout of their own. Unfortunately for the Eagles, the break in action wasn't enough to stifle Lee, and the Lady Flames finished the match on a 12-3 run, taking the set, 25-20, and the match, 3-1.



# Basketball receives first conference win



EMBRY-RIDDLE	79
SOUTHEASTERN	65
Alison Smalling	
ERAU Athletics	

The 2010-11 conference slate for the Embry-Riddle men's basketball began earlier than in years past, as the Eagles opened play in The Sun Conference against Southeastern on Saturday. ERAU downed the Fire 79-65 to notch it first conference win of the season and improved to 9-1 overall. Senior David Butler took over as the Eagles' all-time block leader with his four blocks on the night. Butler accomplished that feat in only his second season wearing the Blue and Gold, moving to 160 career blocks. The Eagles shot the ball well from the field, connecting on 54.5 percent of their attempts, including a 60 percent clip in

the first half. Butler, who finished with nine rebounds, led all players with 21 points on 8-of-14 shooting from the field. Ray Graham totaled 14 points, followed by Jarod Leonard with 13, including a 3-for-6 performance from beyond the arc. Blake Touchard rounded out the Eagle players in double figures with 12 to go with a game-high five assists. The Eagles got off to a strong start, outscoring the Fire 16-8 in the first six minutes, prompting Southeastern head coach John Dunlap to call a timeout. His attempt to rally his team was effective for the first few possessions as the Fire was able to cut the lead to four, but Leonard hit two of his long-range jumpers in a two-minute span to help the Eagles increase the lead to 13 points (28-15). ERAU led by as many as 16 in the first half before going into the break with a 13-point advantage (38-25). Back-to-back jumpers by Nathan Marshall to start the second half enlivened the Southeastern crowd and appeared to give the Fire new life. But the Eagles maintained their com-

posure and a 14-4 run helped the visitors increase the scoring margin to 24 points (60-34) with 11:01 left to play. Embry-Riddle seemed to have the game firmly in hand, but towards the end of regulation, the Fire was able to take advantage of Eagle miscues and struggles at the free throw line to chip away at the lead and managed to shave 10 points off their deficit to make the score 73-61 with 1:41 remaining. Southeastern was not able to get any closer, however, as the Eagles got baskets from Leonard, Graham and Brandon Caputo in the last minute and a half of play to seal the win. Malcolm Pollock matched Butler's efforts on the boards with nine rebounds of his own and was the leading scorer for Southeastern, who fell to 7-4 on the year and 1-1 in league play. Saturday's game was the last before the Christmas break for the Eagles who return to action on Dec. 28-29 with two games in the Land of Magic Classic. ERAU will host Pen State-Behrend on Dec. 28 and follow with a game against Berry on Dec. 29.



ANTOINE DAUGNY/AVION

IN THEIR FIRST CONFERENCE game of the season the Embry-Riddle Basketball team started off strong taking the lead early and eventually took the win. David Butler lead the Eagles with 21 points and nine rebounds, followed by Ray Graham with 14 points.

# Eagles top the Cougars



EMBRY-RIDDLE	87
EDWARD WATERS	60
Alison Smalling	
ERAU Athletics	

Senior David Butler turned in his fourth double-double performance of the season to lead the fifth-ranked Embry-Riddle men's basketball team to an 87-61 victory over former Sun Conference foe Edward Waters,

Wednesday night at the ICI Center. Butler led all scorers with 16 points and was top on the boards with 13 rebounds. The last time Edward Waters and Embry-Riddle met on the basketball court was on Feb. 9, 2010 when the Tigers held off the Eagles for a 79-75 overtime win. Wednesday's contest was a more lopsided affair as the Eagles moved ahead on the first possession of the game and never relinquished the lead on the way to the 26-point win. A one-point edge at the 12:45 mark quickly ballooned to a 16-point advantage for the Eagles who used a 21-6 run over a five-minute stretch to

widen the gap. After shooting 48.5 percent from the field in the first half, the Eagles led 48-30 at the intermission, led by 12 points on 6-of-8 shooting from Blake Touchard. The Tigers' cause was also hurt by three technical fouls called against them in the first 20 minutes. Although the Eagles shot just 55 percent (11-20) from the free throw line in the first frame, they still made 18 more trips to the charity stripe than the Tigers who converted on both of their opportunities. Embry-Riddle's defense prevented the Tigers from getting anything going on offense to start the second period. The Eagles, who had eight blocks

in the contest, including five by Will Benjamin, held the Tigers scoreless in the first six minutes, outscoring the visitors 12-0. The Blue and Gold managed to build the lead up to 34 before ending the night with their eighth double-digit win of the season. The Eagles had five players in double figures, including Butler, and Touchard and Josh Seidel, who had 15 points each. Jarod Leonard came off the bench to add 12 points and Ray Graham finished with 11 points and eight rebounds. The Eagles close out their fall home stand at 8-1, while the Tigers fall to 1-6 on the year.

# Eagles into the playoffs



EMBRY-RIDDLE	3
BRIAR CLIFF	0
Michael Pierce	
ERAU Athletics	

Led by double-digit kills from Abby Hall (11) and Jordan Holcomb (10), the 12th-ranked Embry-Riddle women's volleyball team improved to 2-0 in pool play at the NAIA National Championship with a 3-0 sweep (25-17, 25-22, 25-12) of Briar Cliff (Iowa). The Eagles' win coupled with Southern Oregon's loss to Lee (Tenn.) guarantees the Blue and Gold a spot in Friday's single-elimination playoff bracket. Embry-Riddle got off to a strong start, taking five of the first six points to force BCU to call an early timeout. The break in action didn't break ERAU's momentum, as the Eagles pulled away to a 13-3 lead. The Blue and Gold maintained a double-digit lead throughout most of the set until the Chargers went on a short 4-0 run to pull within seven points at 20-13. Briar Cliff would get no closer, as the Eagles closed out the set with a 25-17 win. In the second set, the Blue and Gold found themselves behind early, trailing 7-3 before head coach Joslynn Gallop took a timeout to settle things down.

Coming out of the timeout the Eagles battled back to tie the set at 10. Embry-Riddle continued to push, taking the lead on a block from Hall and Emily Jacobson, and then extending the lead to five (18-13) on back-to-back service aces from Hall. ERAU continued to hold a comfortable lead until a 4-0 BCU run trimmed the deficit to just two points at 24-22. But after a quick Embry-Riddle timeout, the Blue and Gold won the next point on a kill from Jacobson to take the second set, 25-22. The third set started much in the same way as the first set, with ERAU jumping out to leads of 5-1 and 8-3. A kill from Gloria Kemp ballooned the lead to 13-5, and back-to-back blocks from Hall and Jacobson increased the margin to 20-10. The Eagles finished the match on a 5-0 run keyed by two Holcomb kills and two blocks from Jacobson and Taylor Martin. Hall led all players with 11 kills in addition to picking up seven digs, three blocks and two service aces. Holcomb added 10 kills, seven digs and three blocks (one solo). Adriana Vazquez racked up a match-high 30 assists to go along with eight digs. Nina Kontrec led the way defensively with 17 digs, while Julia Frassetto chipped in with nine digs. Chehala Pace led the Chargers with seven kills while Sarah Wieseler added six kills. Erin Frank recorded a double-double with 23 assists and 11 digs, both team-highs.

# Eagles sweep Southern Oregon



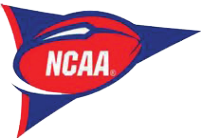
EMBRY-RIDDLE	3
SOUTHERN OREGON	0
Michael Pierce	
ERAU Athletics	

The 12th-ranked Embry-Riddle women's volleyball team opened pool play at the 2010 NAIA National Championship with a hard-fought 3-0 sweep (26-24, 25-22, 25-23) of No. 14 Southern Oregon. Abby Hall led the way with 19 kills while Nina Kontrec anchored the defense with 20 digs. Playing in the program's first-ever National

Championship match, the Eagles dug themselves an early hole, falling behind 7-3 in the first set. Back-to-back kills from Emily Jacobson pulled ERAU to within one at 13-12, and a block from Jacobson and Taylor Martin brought the Eagles even with the Raiders at 15-15. Jordan Holcomb's service ace gave the Blue and Gold their first lead of the match at 17-16, but it would be short-lived, as Southern Oregon rallied back to take a 21-18 lead. After an ERAU timeout, the Eagles strung together four straight points to regain the lead, 22-21. The teams then traded sideouts for the next six points until Gloria Kemp put down a kill to finish the set at 26-24 in favor of Embry-Riddle. The Eagles again found themselves behind in the early stages of the second set,

though the deficit was never more than two points until the Raiders went on a 3-0 run to take a 19-16 lead. After ERAU head coach Joslynn Gallop called for a timeout, her team rallied to win eight of the next 10 points, taking a commanding 24-21 lead. Two points later, Hall ended the set with a kill, giving ERAU a 25-22 win and a 2-0 lead in the match. In the third set, the Blue and Gold were able to gain the advantage much earlier than they had in the previous two sets, using a 4-0 run to take a 7-4 lead in the early going. The Eagles maintained a slight edge until a 4-0 SOU run put the Raiders in front, 17-16. ERAU responded with three consecutive points to regain the lead, 19-17. Southern Oregon fought back to tie things at 22, but a kill from Hall followed by a block from

Holcomb and Jacobson put the Eagles in position to take the match. Two points later, Hall finished off the Raiders with her 19th kill, clinching the set at 25-23 and giving the Eagles their 24th 3-0 sweep of the season. Hall led all players with 19 kills to go along with nine digs and three blocks, while Jacobson added nine kills and six blocks. Holcomb chipped in with eight kills and Martin added seven kills. Adriana Vazquez ran the offense with 43 assists as the Eagles hit .258 for the match. Defensively, Kontrec recorded a match-high 20 digs while Julia Frassetto added 12 digs. Sarah Holgen paced the Raiders with 16 kills while Megan Bartling added 10 kills. Leanne Stennett registered a team-high 18 digs and Becky Johnstone tallied 17 digs.



# NCAA D-1 FOOTBALL



## WEEK 14 SCORES

## WEEK 15 SCHEDULE

(1) OREGON	37	Oregon State	20
(2) AUBURN	56	(18) South Carolina	17
(3) T-C-U		OFF WEEK	
(4) BOISE STATE	50	Utah State	14
(5) L-S-U		OFF WEEK	
(6) Stanford		OFF WEEK	
(7) Wisconsin		OFF WEEK	
(8) Ohio State		OFF WEEK	
(9) Oklahoma State		OFF WEEK	
(10) Michigan State		OFF WEEK	
(11) Alabama		OFF WEEK	
(12) Arkansas		OFF WEEK	
(13) Oklahoma		OFF WEEK	
(14) Missouri		OFF WEEK	
(15) Nebraska		OFF WEEK	
(16) VIRGINIA TECH	44	(22) Florida State	33
(17) Texas A&M		OFF WEEK	
(18) South Carolina	17	(2) AUBURN	56
(19) NEVADA	35	Louisiana Tech	17
(20) UTAH		OFF WEEK	
(21) Arizona	29	ARIZONA STATE	30
(22) Florida State	33	(16) VIRGINIA TECH	44
(23) North Carolina State		OFF WEEK	
(24) Iowa		OFF WEEK	
(25) Mississippi State		OFF WEEK	

(1) Oregon	OFF WEEK
(2) Auburn	OFF WEEK
(3) T-C-U	OFF WEEK
(4) Boise State	OFF WEEK
(5) L-S-U	OFF WEEK
(6) Stanford	OFF WEEK
(7) Wisconsin	OFF WEEK
(8) Ohio State	OFF WEEK
(9) Oklahoma St.	OFF WEEK
(10) Michigan St.	OFF WEEK
(11) Alabama	OFF WEEK
(12) Arkansas	OFF WEEK
(13) Oklahoma	OFF WEEK
(14) Missouri	OFF WEEK
(15) Nebraska	OFF WEEK
(16) Virginia Tech	OFF WEEK
(17) Texas A&M	OFF WEEK
(18) South Carolina	OFF WEEK
(19) Nevada	OFF WEEK
(20) Utah	OFF WEEK
(21) Arizona	OFF WEEK
(22) Florida State	OFF WEEK
(23) North Carolina	OFF WEEK
(24) Iowa	OFF WEEK
(25) Mississippi St.	OFF WEEK





# All the News A Teenager Needs

Newspapers give heroes everywhere an extra edge. Leo follows world events. Don keeps up with the latest in scientific discoveries. Raph reads the sports section. Mikey checks out the TV listings. And everyone keeps an eye on crime!



**It all starts with newspapers.**

[www.newspaperlinks.com](http://www.newspaperlinks.com)

THIS MESSAGE IS BROUGHT TO YOU BY THIS NEWSPAPER AND THE NEWSPAPER ASSOCIATION OF AMERICA®

©2005 Mirage Studios, Inc. Teenage Mutant Ninja Turtles™ is a trademark of Mirage Studios, Inc. All rights reserved.





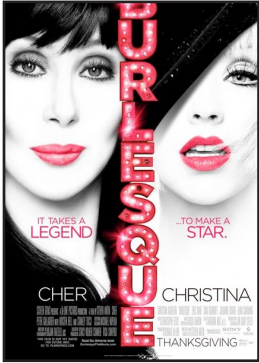
# ENTERTAINMENT

C2  
+The Whitest Boy Alive

PHOTO COURTESY SONY PICTURES



# All singing, all dancing



## Burlesque



Ainsley Robson

Campus Editor

Over Thanksgiving weekend the movie Burlesque opened in

theaters. This movie takes two giants in the Music Industry and places them on the screen in this musical.

Cher plays the part of Tess the owner and former dancer at the Burlesque Lounge. Currently, Tess is struggling to keep her theater open, but she has no money and no headliner to draw the crowd in. On top of that she has a businessman, played by Eric Dane, who wants to buy the property and is working hard to complete this.

Ali, Christina Aguilera, on the other hand is a small-town girl in Los Angeles who is just trying to make her way and dreams of dancing. While she is wondering the city looking for a job Ali comes across the Burlesque Lounge and falls in love with the idea of dancing there, but first she

needs to get hired. After not being given the chance to audition to be a dancer, Ali works her way to be a waitress at the lounge.

Eventually, Ali gets her chance to show that she can dance, but then surprises everyone that she can also sing. Soon Ali finds herself the center of an all new show, but also in the middle of a interesting love triangle with all of the new attention that she is getting.

The movie captures the essence of the original concept of what burlesque is all about. This once popular type of adult entertainment shows it origins of the music halls of the 19th century in the small theater that Tess owns. The movie includes the classic song 'Dimonds are a Girls Best Friend.' that was

made popular to the general american by Marilyn Monroe

The music from the movie includes classic burlesque songs that includes many of the ones that were made famous by May West in the 1930's, the movie also contains a couple of songs from Cher herself and many from Christina Aguilera.

Fans of musicals will enjoy this movie. The performances did not disappoint in the songs or in the dancing. For the guys, too will find something to enjoy as well. With this I would have to say that this movie makes date night at the movies perfect for both genders.

I give Burlesque four and a half airplanes out of five. The plot of the story was not the strongest element of the movie, but the music, dancing, and cinematography makes it a worth while movie to see.



PHOTO COURTESY SONY PICTURES

**BURLESQUE IS THE ALL** singing, all dancing audio visual smorgasbord of the season, featuring original and adapted performances by Cher and Christina Aguilera.

# The musical Norwegian minimalist



## Dreams

Whitest Boy Alive



Peter Tan

Staff Reporter

While the name of the artist might seem strange at first, once you know that this band is the most recent side project of Norwegian musician Erlend Øye, everything makes a little more sense.

Critically acclaimed as one half of the duo that is Kings of Convenience, Øye returns with his same restrained voice but against the backdrop of a very different sound.

Fans of Kings of Convenience will definitely be able to pick out similarities between the two bands, most notably the voice of Øye. However where the former focuses a lot more on acoustic guitar sets and the duality of voices, The Whitest Boy Alive has more drums, electronic effects and solo vocals from Øye.

The Whitest Boy Alive is a blend of Indie Pop, Electronic with a tiny pinch of Bossa Nova thrown into the mix, playing music that would not be out of place in a wine bar, hotel bars or a coffee house. Restrained vocals, detached melodies and the occasional piano bridge, create a unique sound.

Of note is Øye's masterful placement of silence. Where many acts nowadays throw an overwhelming audio bar-



PHOTO COURTESY WHITESTBOYALIVE.COM

**THE WHITEST BOY ALIVE**, the side project of Norwegian Erlend Øye released their first album "Dreams" in 2006 and most recently released their second album "Rules."

rage at the listener, Øye is one of the few groups out there who interject their music with lulls and breaks, leaving the listener with a sort of "aftersound", the aural version of aftertaste.

The opening track "Burning" starts out with a foot-tapping guitar intro backed by a solid bass line and a carefully measured drum rhythm. Something that stands out throughout the rest of the album is just how tight the band is overall. The drum beat might as well be a metronome and it is this clinical cleanliness that is both a strength and weakness.

The tightness and precision timing of the sound means that the various instruments complement each other very well and supplement the vocals beautifully. However this also means that the music feels a little too cold and leaves the tracks lacking personality. The songs are nice but lack that

"whoa, what song is this?" moment that gets you scrambling for the case to find out what song is playing.

The introduction of "Inflation" sounds exactly like the main riff of "Message in a Bottle" by The Police before going off into a realm where you will never find The Police. The ninth track "Golden Cage" has a real chill-out, almost melancholic feel to it. The lyrics also induce that feeling of melancholy even more, with words such as "So of course I miss you and miss you bad."

Overall, the album is a fairly decent listen and makes for some excellent background music, but there lie the flaw. The tracks are easily forgettable and background music is easily tuned out by the listener if he/she is up to something else. It is still a good album that could easily be

Kings of Convenience remixed for electronic dance and worth trying out.

*The Avion Presents*  
*Winter Movie Preview*

**TRON: Legacy**  
Dec. 17 Disney  
Directed by Joseph Kosinski  
Staring Jeff Bridges and Garrett Hedlund  
A return to the world of Tron after over twenty years.

**How Do You Know**  
Dec. 17 Columbia Pictures  
Written and directed by James L. Brooks  
Staring Reese Witherspoon, Jack Nicholson and Owen Willson  
Romantic comedy of serendipitous love triangles.

REESE WITHERSPOON  
OWEN WILSON  
PAUL RUDD  
JACK NICHOLSON  
A NEW COMEDY FROM WRITER-DIRECTOR JAMES L. BROOKS  
**How Do You Know**  
DECEMBER 17

**True Grit**  
Dec. 22 Paramount  
Witten and directed Joel and Ethan Coen  
Staring Jeff Bridges, Matt Damon and Josh Brolin  
A western of vengeance and retribution

NICHOLAS CAGE  
THIS JANUARY  
RAVE SOME HELL  
**SEASON OF THE WITCH**  
RON PERLMAN

**Season of the Witch**  
Jan 7 Rouge Pictures  
Directed by Dominic Sena  
Staring Nicholas Cage and Ron Perlman  
Crusaders transport as suspected witch to a monastery.

**TOUCH-N-GO PRODUCTIONS PRESENTS**

STALLONE  
FA  
AUSTIN COUTURE LUNDGREN LI STALLONE STATHAM CREWS ROURKE WILLIS  
**THE EXPENDABLES**  
8:30 PM WWW.TOUCH-N-GO.ORG IC 101



HOUSING/  
ROOMMATES

3 Bedroom/Bath Home/ 2 minutes away from Embry-Riddle University. Remodeled recently. Has central Heat & air - Includes stove, washer, dryer & refrigerator. On a cul de sac quiet and pleasant neighborhood. Large deck, beautiful yard. \$825.00 Month. 386-441-4288

JOB TRAINING

Back to School. Earn Big Bucks! Excellent Full/Part Time Job Placement! LEARN BARTENDING. Call :386.673.6477, come to 1132 W. Granda Blvd. or visit [www.bartendersplus.com](http://www.bartendersplus.com)



Why fly M.C. Flyers? Better Question: Why AREN'T you? Operated by ERAU Alumni and Team for 20 yrs. Customers tell us we have all the others beat. Go to [www.mcflyers.com](http://www.mcflyers.com) or call 386-767-9464

MISCELLANEOUS

ATTENTION: FOREIGN STUDENTS

Get the "GREEN CARD"  
NO INVESTMENTS!  
NO SPONSOR!

CALL FOR MORE INFORMATION: AMERICAN IMMIGRATION SERVICES (386)586-6985

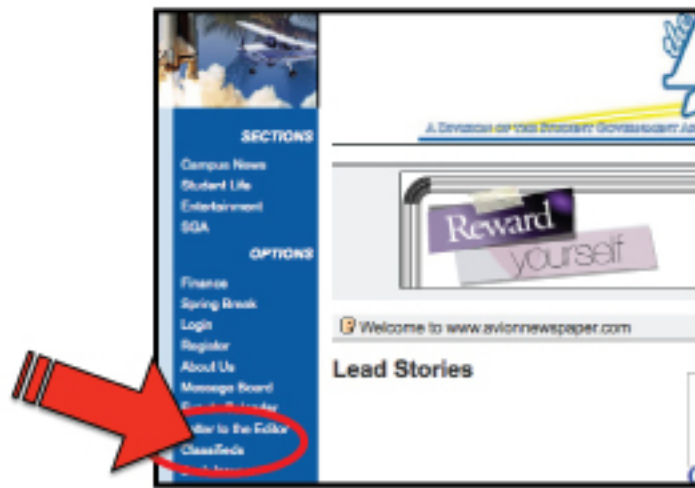
# Submitting a Classified

Simple 1-2-3

1. Go to [avionnewspaper.campusave.com](http://avionnewspaper.campusave.com)

OR

Go [www.avionnewspaper.com](http://www.avionnewspaper.com) and click on **Classifieds**



2. Click on **Admin Login** to open or create your Avion Newspaper classified account.

3. Go to **Post Ads** and select which type of classifieds you would like to post. Continue filling in all the information to your specifications.

Online Ads are published for 15 days while Printed Ads are printed in a specified Issue you choose. Carefully observe the summary before submitting. All Ads submitted online can be paid for by credit card.



## M.C. FLYERS

[www.mcflyers.com](http://www.mcflyers.com)



1. Operated by ERAU Alumni and Team for 20yrs.
2. Aircraft are Fueled and Oiled Prior to your Flight
3. Schedule Overnight Flights if Needed
4. Extended Scheduling Hours
5. Excellent Rapport with Local FAA Examiners
6. Excellent Customer Communication
7. Maintenance Performed ASAP (Usually Overnight)
8. Affordable Training and Time Building
9. Highly Experienced Flight Instructors
10. BEST RATES (Call for More Information)

Consider the product/price and our customers tell us we have all the others beat. Their only regret is that they didn't find us sooner. Our 172 has been approved by the FAA for Air Taxi Flight. A more rigorous standard. Communication and all aircraft are IFR and four place intercom.

Do not sit in traffic as the meter flies and you sit. Fly out of a private airport. YOU CAN PARK RIGHT NEXT TO THE PLANE. Little or no waiting for take-off. Socialize and fly around all types of pilots and airplanes, helicopters, seaplanes, celebrities, inventors, 99 club, one of a kind airplanes, and vintage aircraft. Experience it all at one of the nation's more exclusive airports.



# FREE

CHECKOUT BY INSTRUCTOR

WITH 10 HOUR BLOCK PURCHASE IN THE C-172 or TWIN GERONIMO

Call: (386)-767-9464



FOR SALE



HOUSING



JOBS

1,000's of jobs  
& internships are  
waiting for you.

LOOK NOW AT

>>> [avionnewspaper.campusave.com](http://avionnewspaper.campusave.com)



I'M SITTING DOWN!

GALT

		8				4		
		3		6		2		
4	2	6			1	5	7	3
		2	6		8			
	1			9			5	
			3		7	9		
2	8	1	5			3	6	4
		4		3		8		
		9				1		

			4		7	9		1
	7		2	6			5	
		6			3	2		
7			1					
5				3				2
					6			4
		3	8			6		
	9			5	2		4	
8		2	6		9			

Dr. Lee

YOUR DEMEANOR TELLS ME THAT YOU WILL NEVER BUY OUR PRODUCT. YOU ONLY WANT THE QUOTE AS A POINT OF REFERENCE.

OR MAYBE I'M GIVING  
YOU FALSE HOPE BECAUSE  
IT'S LESS AWKWARD TO  
END THE MEETING THAT  
WAY.

**DIE! DIE!  
DIE!**

**OVER THE HEDGE**

by Michael Fry and T Lewis

SHWICK-A, SHWICK SHWICK

SNOWY ANGEL TIME!

overthehedge.com

-A, SHWICK-A,

		8	9	5		4		
	4				6	3		
	1		3		7		2	
1		6					4	
	7		1	2	4		6	
	2					1		7
	8		4		5		9	
		3	2				1	
		7		8	1	2		

# Crossword

Easy

3		1		5				
4		7	9				6	
	9		7	8	4			1
		8	5					
	3	6	8	4	7	5	2	
					3	4		
2			3	6	8		1	
	1				9	6		3
				7		2		8

2		3		9			1	6
1				3				
			6	4				2
			8		3	9		
5	2	8		6		3	4	7
		6	4		7			
3				7	2			
				1				4
6	5			8		2		3

## Medium

5				9				8
	7				5	3	1	
	3	2			6	9		
	1	3	5		8			
7				6				1
			9		1	4	2	
		7	6			8	9	
	8	9	2				4	
4				5				7

# Hard

			6		3	5		
	5	1			4		9	
2			1				6	
5	6					8		7
				4				
7		4					5	2
	2				8			6
	7		9			1	8	
		5	7		1			

**DOWN**

- 1 Average guy
- 2 Gore and
- 3 Capone
- 4 Bark
- 5 Lebanon neighbor
- 6 Curious
- 7 W. Hemisphere
- 8 gp.
- 9 Feel empathy
- 10 Fixed
- 11 Saint Teresa's
- 12 town
- 13 Copper, e.g.
- 14 Former JFK
- 15 arrivals
- 16 Harmful
- 17 Spenser opus
- 18 It may jackknife
- 19 Purple flower
- 20 Salt, in the lab
- 21 In a tizzy
- 22 "It Must Be
- 23 Him" singer
- 24 Um-hmm (2
- 25 wds.)
- 26 Making bubbly
- 27 Slave girl of
- 28 opera
- 29 Mumble
- 30 Corsica neighbor
- 31 WSW opposite
- 32 File or paper
- 34 Newspaper
- 35 edition
- 36 Kind of rocket
- 37 Water, in com-
- 38 bos
- 39 Dog or salad
- 40 —
- 41 Changed color
- 42 Coral ridge
- 43 Rage
- 44 Promissory
- 45 note
- 46 Natalie's
- 47 father
- 48 Mdse.

1	2	3	4		5	6	7		8	9	10	11
12					13				14			
15				16					17			
			18				19	20				
21	22	23						24				
25				26	27	28	29					
30			31		32				33	34	35	36
37					38				39			
			40	41				42		43		
	44	45						46	47			
48					49		50					
51					52	53				54	55	56
57					58				59			
60					61				62			

© 2010 by UFS, Inc.

## ACROSS

- |                     |                      |                      |                        |                 |
|---------------------|----------------------|----------------------|------------------------|-----------------|
| 53 Rage             |                      |                      |                        |                 |
| 54 Promissory note  | 1 Noisy birds        | 21 Red Sea peninsula | 40 Wish undone         | 51 Opposed      |
| 55 Natalie's father | 5 Fruitcake go-with  | 24 Gauge             | 43 Name                | 52 Submissive   |
| 56 Mdse.            | 8 Woolly animals     | 25 Victorian, e.g.   | 44 Kukla's friend      | 57 Tall tale    |
|                     | 12 Cosmetic oil      | 26 More frilly       | 46 Maureen or Scarlett | 58 Prior to     |
|                     | 13 Thole filler      | 30 Isinglass         | 48 Lost some           | 59 Kind of hog  |
|                     | 14 Festive nights    | 32 Pump fuel         | 50 Judge Bean          | 60 Wade through |
|                     | 15 Gourmet coffee    | 33 Self-confidence   |                        | 61 Phone trio   |
|                     | 17 Brad of Hollywood | 37 Atlas dot         |                        | 62 Excuses      |
|                     | 18 Dorm coverer      | 38 Natural resource  |                        |                 |
|                     | 19 Eucalyptus din-   | 39 Sour pickle       |                        |                 |

3								9
		5		2	6	3		
	7	9	1	5		4	8	
	3					6		
	6	7		1		9	2	
		2					1	
	9	6		8	1	2	4	
		4	7	6		8		
7								6

		8		2	7	5		
	7		8	5			4	
2					9			7
1		4					2	
7	6						3	4
	3					6		5
6			3					9
	2			8	6		7	
		3	9	7		4		

### Answer to Previous Puzzle

V	W	S		W	I	R	E		Y	O	L	K
C	A	Y		I	C	O	N		E	D	I	E
R	I	N	G	L	I	N	G		A	I	R	Y
S	T	E	A	D					T	R	E	E
			Z	E	E		H	E	N			
W	O	K	E		V	A	I	L		P	C	S
I	R	A	S		I	R	K			R	E	P
F	A	R			C	E	E		M	O	D	E
E	L	L		S	T	A	R		A	W	E	D
			E	O	S		S	A	D			
W	R	A	P	S				E	R	A	S	E
Y	O	R	E		W	E	S	T	E	R	N	S
N	U	K	E		E	D	E	N		C	O	P
N	E	S	S		B	O	C	A		H	W	Y

**There were no winners of last weeks crossword puzzle contest.** Previous winners can stop *The Avion* office after Tuesday to claim their prizes if they haven't already done so.

### Before Next Issue:

Enter *The Avion* crossword contest!

Submit your completed crossword to *The Avion* office in SC 110 before Friday, Dec. 10, at 5 p.m. to be considered.

**Only students can enter, please bring the completed crossword and your Student ID.**