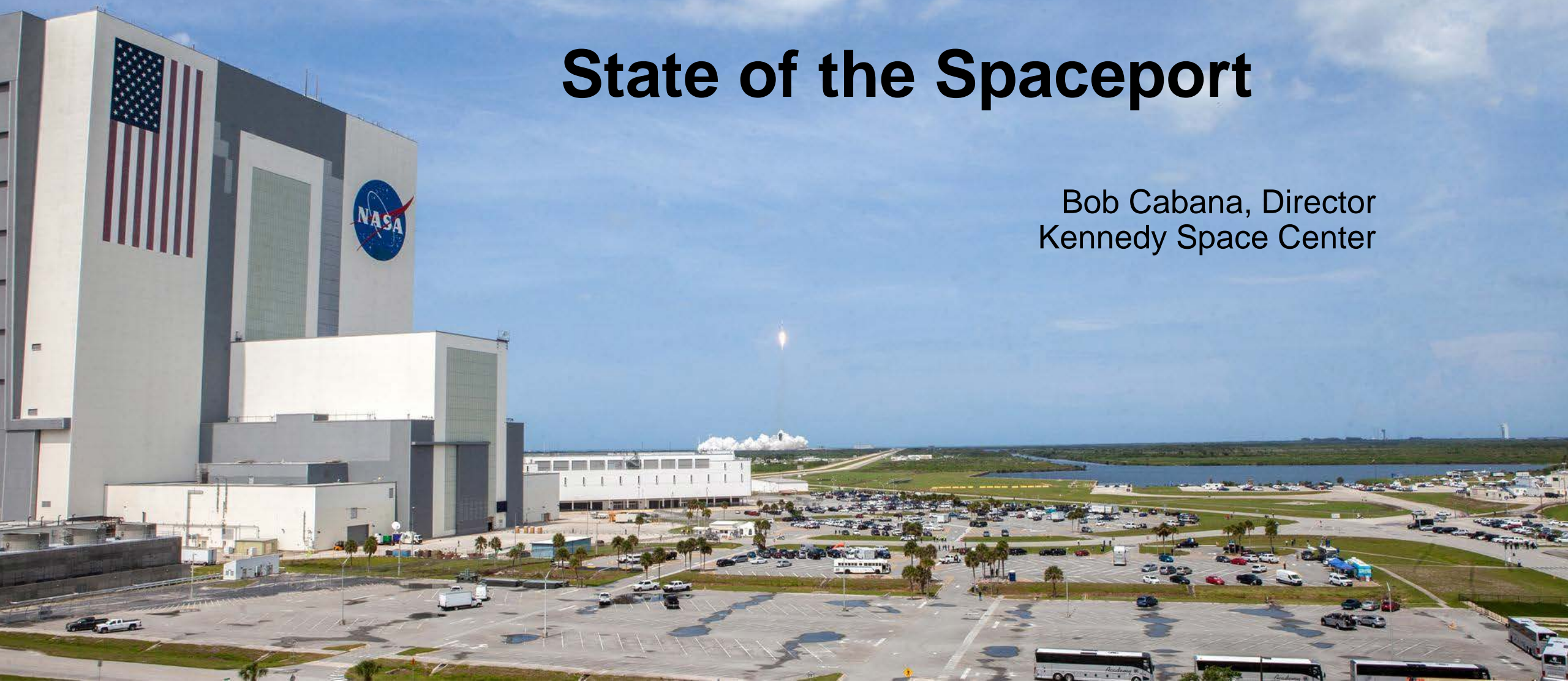




State of the Spaceport

Bob Cabana, Director
Kennedy Space Center





KENNEDY SPACE CENTER GO

Premier Multi-User Spaceport



KSC Roadmap

2021

2022

2023

2024

2025

Exploration Research & Technology



Commercial Lunar Payload Services

★ OSAM-1 CDR



MSolo-1 on Astrobatic Mission Lander



MSolo Integrated for VIPER Mission



MSolo-2 on Masten Lander



PRIME-1 Delivered to Lander



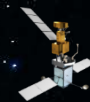
MSolo-2 Launch



Prime-1 Launch



★ VIPER Launch



OSAM-1 Robotic spacecraft servicing

International Space Station



NG-15



SpX-22

NG-16



SpX-23

SpX-24

NG-17



SpX-25

HTV-X1



SpX-26

HTV-X2

Commercial Crew



Crew-2



OFT-2

Crew-3



CFT

Crew-4



PCM-1



PCM-2

Crew-5



PCM-3



PCM-4

Crew-6

Launch Services



DART

Landsat 9

Lucy

JWST*

IXPE

GOES-T



TBD

TBD

TBD

TBD

NISAR*
Tropics
SWOT
Psyche
JPSS-2
PUNCH
PACE

GOES-U
SPHEREx
Europa Clipper

TBD

TBD

TBD

TBD

TBD

OSAM-1 MAP

Sent-6B RST

TBD

TBD

Lunar Gateway



HALO+PPE
Human Lander System



Exploration Ground Systems

ML-1

Facilities

OPI

ML-2

ML-2 ICDR

SLS Artemis-1
Block 1
Uncrewed



ML-1, VAB
Modifications
Emergency
Egress System

SLS Artemis-2
Block 1
Crewed



ML-2, DCR

SLS Artemis-3
Block 1
Crewed



Multi-user Spaceport



Crawler Way
Conditioning



CCF, LC-39B
LH2 Upgrades



VAB Utility
Annex Upgrades



LC-39B
LN2 System



Indian River Bridge
Replacement

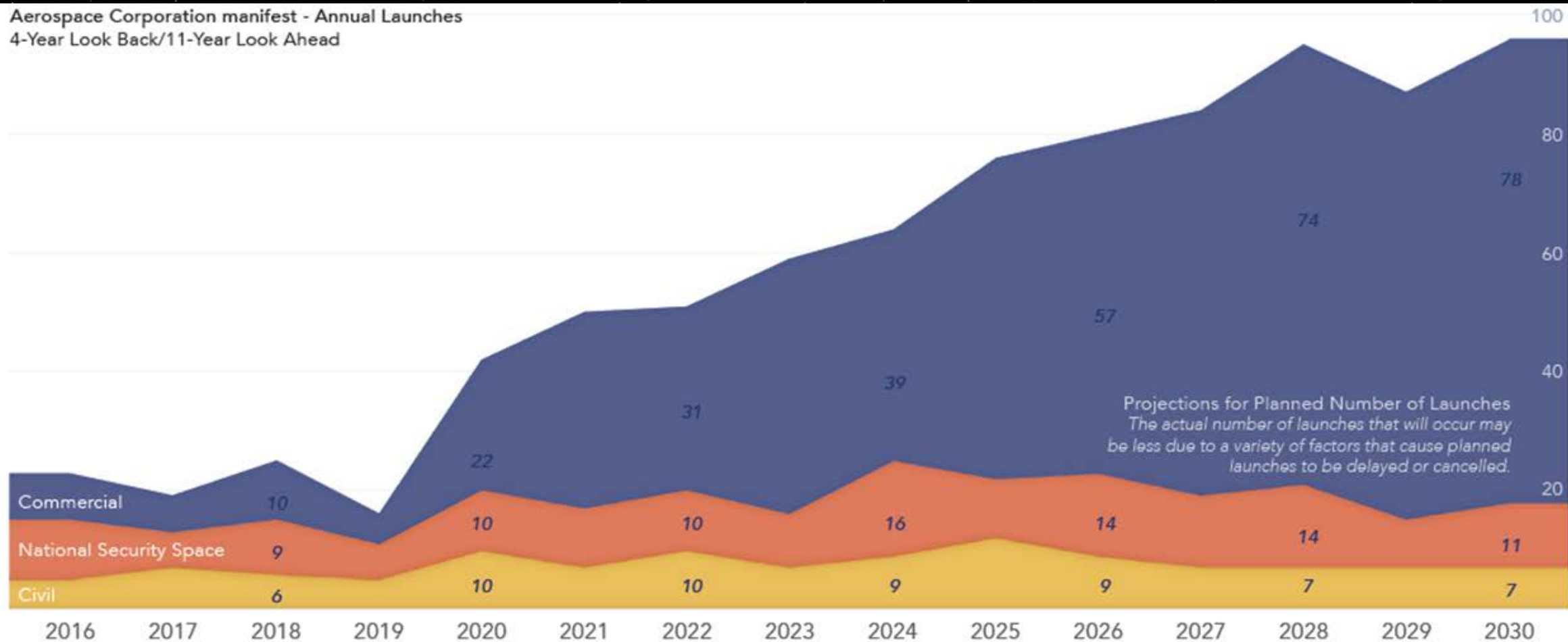


CCHQ
Phase 2 (2026)

* Not
launched from

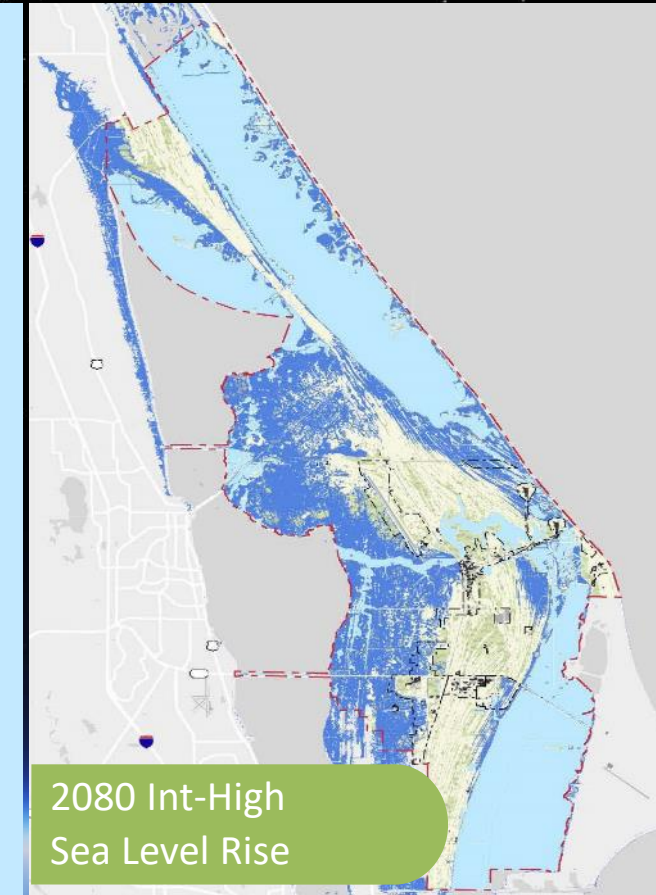
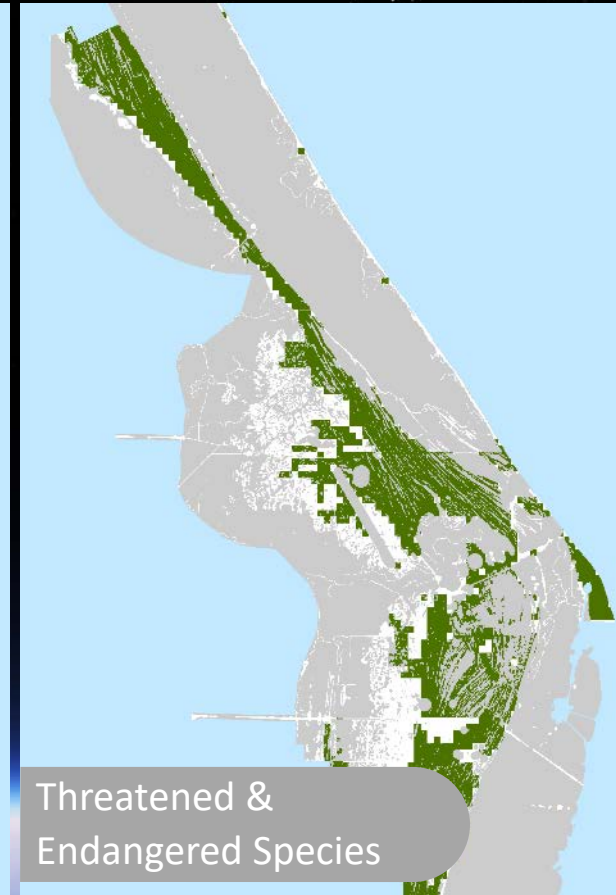
EASTERN RANGE LAUNCH MANIFEST - 10-YEAR

Aerospace Corporation manifest - Annual Launches
4-Year Look Back/11-Year Look Ahead



DEVELOPMENT CONSIDERATIONS

While KSC encompasses 140K+ acres, the amount of land that is suitable for development is considerably less due a number of natural, man-made, and predicted development constraints



CONSIDERATIONS OVERLAY MAP

QUANTITY-DISTANCE (QD) ARCS

Numerous facilities on KSC require buffer distances to ensure that nearby facilities and employees are protected from explosive materials

THREATENED AND ENDANGERED SPECIES

KSC is home to 14 federally listed species including the 2nd largest habitat of the endangered Florida Scrub Jay in the world. Its habitat, public recreational opportunities, and other environmentally sensitive areas are actively managed by the US Fish and Wildlife Service

SEA LEVEL RISE

Due to its proximity to the Atlantic Ocean and rising seas, future development in areas forecasted to experience future flooding should be avoided

WETLANDS

KSC is designated as a wildlife refuge and located on a barrier island with ~96k acres of wetlands. Mitigation opportunities to offset development on wetlands have become increasingly scarce



SPACEPORT GROWTH BOUNDARIES

Taking all constraints into account, only 7,500 acres is available to accommodate future development

Spaceport Growth Boundaries (SGBs) identifies future developable property unencumbered by constraints

- Expands on KSC districts produced during Vision Workshop and developable land uses identified in 2014 Master Plan and EIS
- Aligns with infill development strategy and increases NASA cost savings
- Concentrates future non-NASA development in Space Commerce Way District near Exploration Park

Programmatic EA produced in parallel with Vision Plan

- Assesses broad, cumulative impacts of future land use change and development on KSC
- Fulfills Agency NEPA (National Environmental Policy Act) requirement to incorporate visioning process and federal partners (US F&W) input
- Landmark approach due to KSC's expansive and unique property

